



1425 NORTH MCDOWELL

SEQUOIA

BUSINESS CENTER

...

PETALUMA, CA

OFFICE SPACE FOR LEASE

Steven Leonard
Managing Director
+1 415 722 1080
steven.leonard@cushwake.com
Lic #: 00909604

Brian Foster
Executive Director
+1 415 451 2437
brian.foster@cushwake.com
Lic #: 01393059

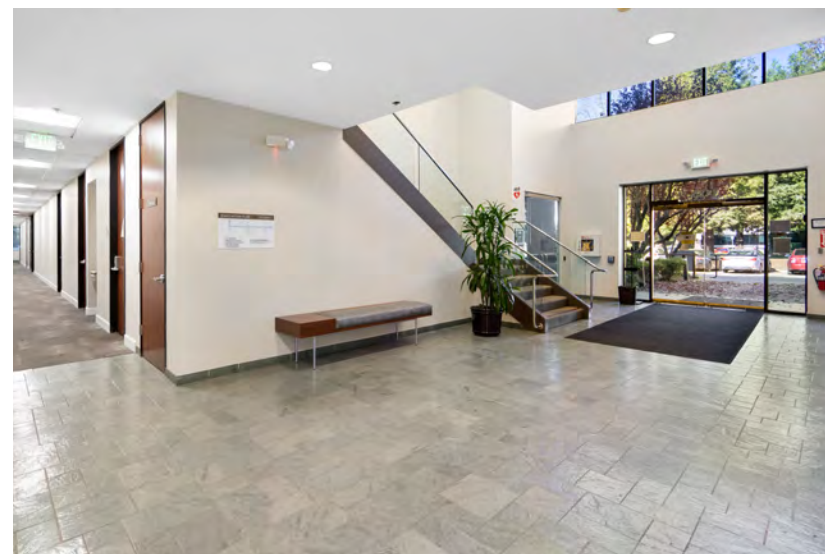
Drew Soltis
Associate
+1 415 451 2415
drew.soltis@cushwake.com
Lic #: 02163430

Trevor Buck
Executive Managing Director
+1 415 451 2436
trevor.buck@cushwake.com
Lic #: 01255462



Property Highlights

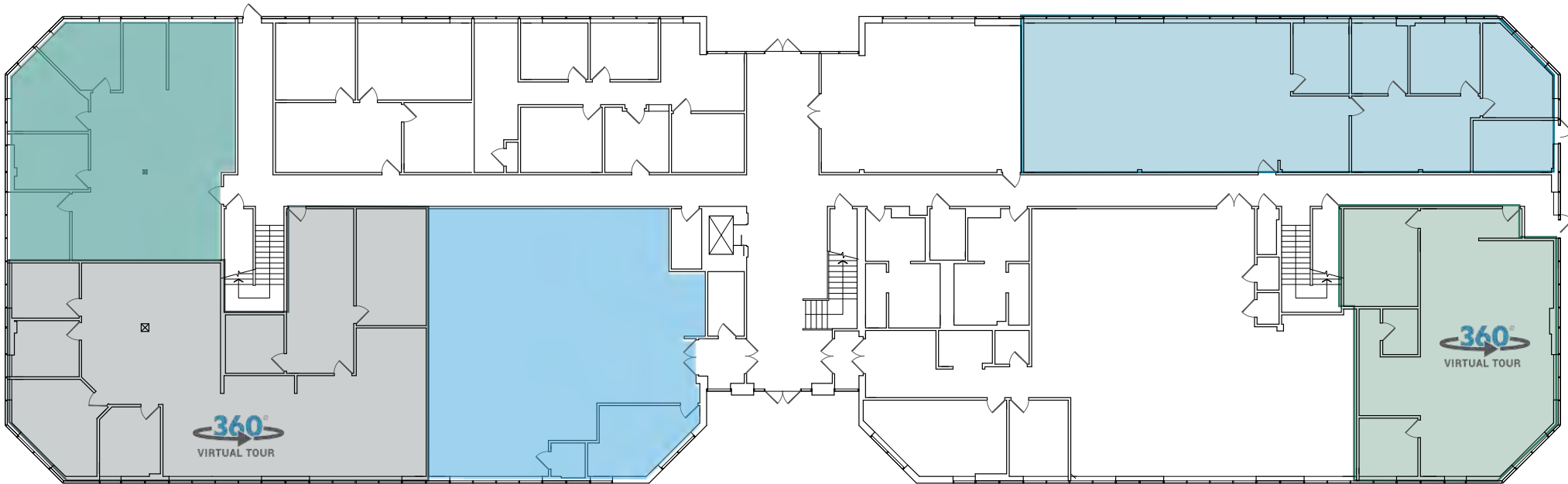
- 2 story elevator served office building
- Abundant exterior glass
- Flexible floor plans
- Approximately 117 on site parking spaces
- 2 EV charging stations
- \$2.10 PSF full service
- One block from US 101 at Old Redwood Highway
- Mature landscaping throughout/ surrounded by mature redwood trees
- Common area conference room (Click [here](#) for 3D tour)
- Close proximity to Redwood Business Center/Lagunitas and Hen House Brewery



1st Floor Plan

Suite 105*
RSF: ±1,835

Suite 125
RSF: ±2,662



Suite 103*
RSF: ±3,301

Suite 140*
RSF: ±2,662

Suite 130
RSF: ±1,847

*Suites 103, 105 & 140 can be combined for a total of ±5,136 SF, ±5,962 SF or ±7,798 SF

1425 NORTH MCDOWELL

SEQUOIA

BUSINESS CENTER

...

PETALUMA, CA

OFFICE SPACE FOR LEASE

Steven Leonard
Managing Director
+1 415 722 1080
steven.leonard@cushwake.com
Lic #: 00909604

Brian Foster
Executive Director
+1 415 451 2437
brian.foster@cushwake.com
Lic #: 01393059

Drew Soltis
Associate
+1 415 451 2415
drew.soltis@cushwake.com
Lic #: 02163430

Trevor Buck
Executive Managing Director
+1 415 451 2436
trevor.buck@cushwake.com
Lic #: 01255462

2nd Floor Plan

Suite 215*

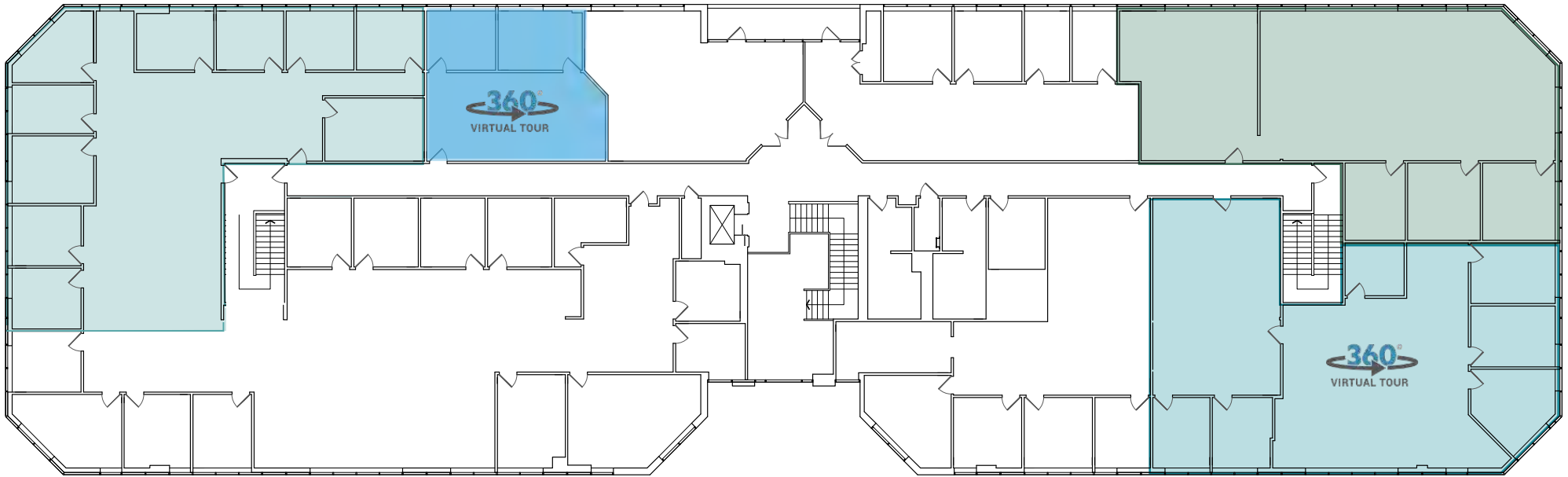
RSF: ±3,416

Suite 213*

RSF: ±910

Suite 207*

RSF: ±2,526



*Suites 204 & 207 can be combined for a total of ±5,655 SF

*Suites 215 & 213 can be combined for a total of ±4,326 SF

Suite 204*

RSF: ±3,129

1425 NORTH MCDOWELL

SEQUOIA

BUSINESS CENTER

...

PETALUMA, CA

OFFICE SPACE FOR LEASE

Steven Leonard
Managing Director
+1 415 722 1080
steven.leonard@cushwake.com
Lic #: 00909604

Brian Foster
Executive Director
+1 415 451 2437
brian.foster@cushwake.com
Lic #: 01393059

Drew Soltis
Associate
+1 415 451 2415
drew.soltis@cushwake.com
Lic #: 02163430

Trevor Buck
Executive Managing Director
+1 415 451 2436
trevor.buck@cushwake.com
Lic #: 01255462



1425 N MCDOWELL

US HIGHWAY 101



1425 NORTH MCDOWELL

SEQUOIA

BUSINESS CENTER

...

PETALUMA, CA

OFFICE SPACE FOR LEASE

Steven Leonard
Managing Director
+1 415 722 1080
steven.leonard@cushwake.com
Lic #: 00909604

Brian Foster
Executive Director
+1 415 451 2437
brian.foster@cushwake.com
Lic #: 01393059

Drew Soltis
Associate
+1 415 451 2415
drew.soltis@cushwake.com
Lic #: 02163430

Trevor Buck
Executive Managing Director
+1 415 451 2436
trevor.buck@cushwake.com
Lic #: 01255462