



CUSHMAN &  
WAKEFIELD



Oaklyn

FOR LEASE

# 3101 *N Federal Highway*

Oakland Park, FL

## *Historic Mid-Century Landmark with Modern Vibe*

On Oakland Park's  
Most Vibrant Campus





# BUILDING HIGHLIGHTS

Position your business on the top floors of the iconic Citibank Building at the intersection of Federal Highway and Oakland park Boulevard – Broward County's second busiest intersection with over 100,000 VPD. The 7th and 8th floors offer full-floor availability with floor-to-ceiling windows, sweeping views, and blank canvas interiors ready for custom buildout—ideal for a headquarters presence or impressive client-facing environment.

- ±16,000 SF of contiguous top-floor office space
- Full-floor availability on the 7th and 8th floors
- Floor-to-ceiling windows with 360° views
- Ideal for company headquarters or executive offices
- Brand new elevators and modernized building systems
- Recently renovated interiors; blank canvas ready for build-out

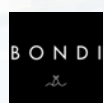
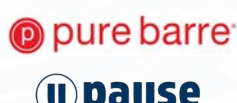


## CAMPUS LIFESTYLE

Located within the Oaklyn Campus—Broward's premier live-work-play destination—tenants enjoy direct access to retail, dining, wellness, and culture, all steps from the office. This distinctive mid-century icon, recognizable for its unique silhouette, now anchors a bustling lifestyle campus blending office, luxury apartments, dining, and retail, all steps from your door.

- On-site retail, wellness, and dining at Oaklyn Campus
- 660 parking spaces (garage + surface)

### NOW OPEN ON-SITE:

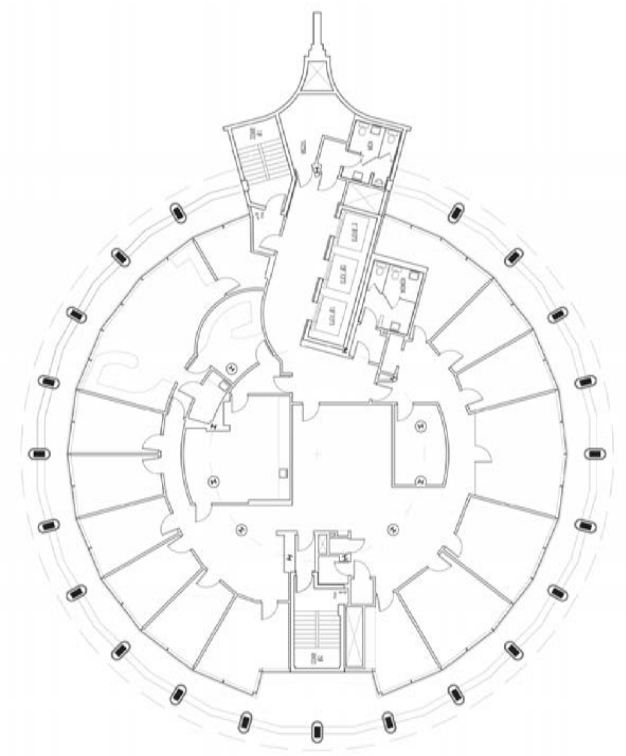




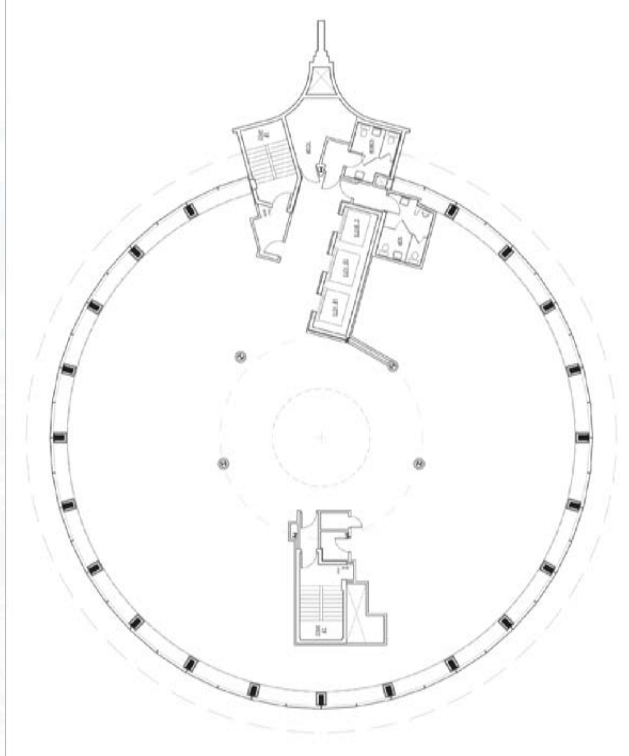
# FLOOR PLANS

Open layouts ideal for collaborative workspaces, executive suites, or creative studios—designed to adapt to your vision.

## FLOOR 7

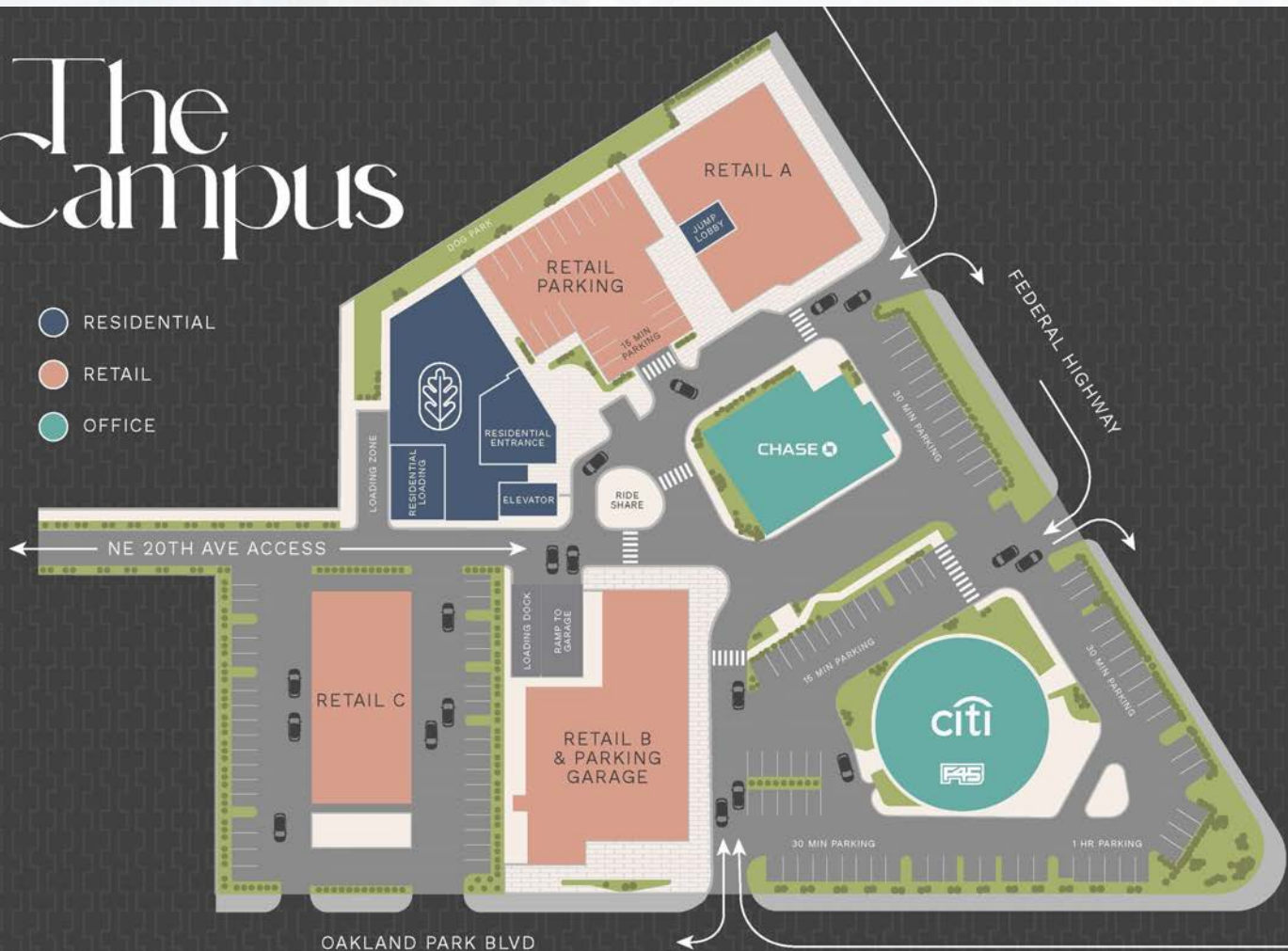


## FLOOR 8



# The Campus

- RESIDENTIAL
- RETAIL
- OFFICE





# AMENITIES MAP



For more information or to schedule a tour, scan the QR code or contact:



**BEAU LADWIG**

Director

+1 954 938 2610

beau.ladwig@cushwake.com



**DONNA KORN**

Managing Director

+1 954 377 0498

donna.korn@cushwake.com



**CUSHMAN & WAKEFIELD**

cushmanwakefield.com

©2025 Cushman & Wakefield. All rights reserved. The information contained in this communication is strictly confidential. This information has been obtained from sources believed to be reliable but has not been verified. NO WARRANTY OR REPRESENTATION, EXPRESS OR IMPLIED, IS MADE AS TO THE CONDITION OF THE PROPERTY (OR PROPERTIES) REFERENCED HEREIN OR AS TO THE ACCURACY OR COMPLETENESS OF THE INFORMATION CONTAINED HEREIN, AND SAME IS SUBMITTED SUBJECT TO ERRORS, OMISSIONS, CHANGE OF PRICE, RENTAL OR OTHER CONDITIONS, WITHDRAWAL WITHOUT NOTICE, AND TO ANY SPECIAL LISTING CONDITIONS IMPOSED BY THE PROPERTY OWNER(S). ANY PROJECTIONS, OPINIONS OR ESTIMATES ARE SUBJECT TO UNCERTAINTY AND DO NOT SIGNIFY CURRENT OR FUTURE PROPERTY PERFORMANCE.