

FOR SALE OR LEASE

**UNIT 5
7218 PROGRESS WAY**

Delta, BC



REDUCED PRICE



WAREHOUSE AND OFFICE SPACE FOR SALE OR LEASE

 **CONTACT US:**

JORDAN SENGARA

Personal Real Estate Corporation
Vice President
+ 1 604 640 5845
jordan.sengara@cushwake.com

ERIC RICE

Personal Real Estate Corporation
Vice President, Industrial
+1 604 640 5877
eric.rice@cushwake.com

BUILDING HIGHLIGHTS



THE OPPORTUNITY

To secure a fully improved turn key industrial strata unit totaling 2,642 SF in the sought after Tilbury Industrial area. Buyer/Tenant's will be provided with vacant possession.

SALIENT DETAILS

ASKING PRICE	\$1,300,000 PRICE REDUCED TO \$1,275,000
ASKING LEASE RATE	Please Contact listing agents
ZONING	(I-2), Medium Impact Industrial)
AVAILABILITY	Immediate

BUILDING FEATURES



Loading: One rear grade level door (12' x 10')



Clear ceiling height: 20'9" in the warehouse area



Heating: Gas forced air in the warehouse area



Ground floor boardroom



Ground floor lunchroom



Two (2) second floor private offices with natural light



Two (2) washrooms - one on the ground floor and one on the second floor with shower



Security system: Bosch Intrusion alarm with Avigilon intercom and FOB system

PROPERTY PHOTOS

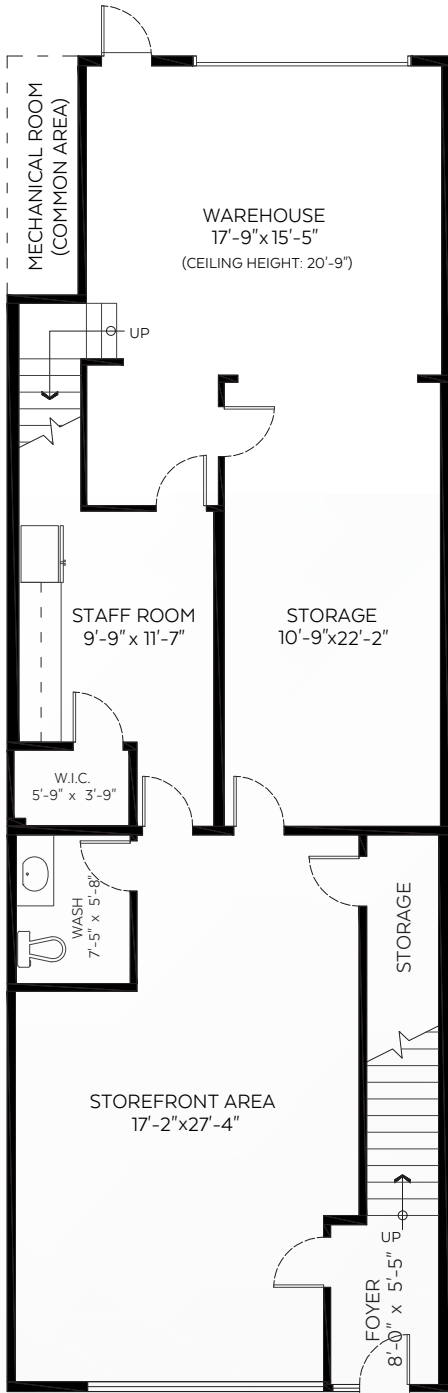


FLOOR PLAN

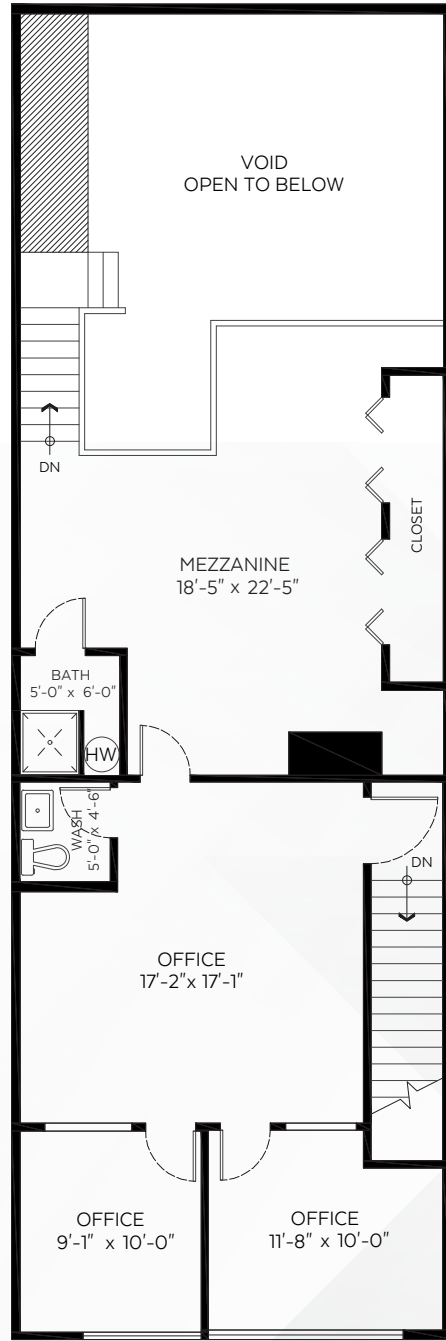
AVAILABLE AREA

GROUND FLOOR	2,028 SF
SECOND FLOOR	614 SF
TOTAL SPACE	2,642 SF*

*As per the strata plans



OFFICE/WAREHOUSE

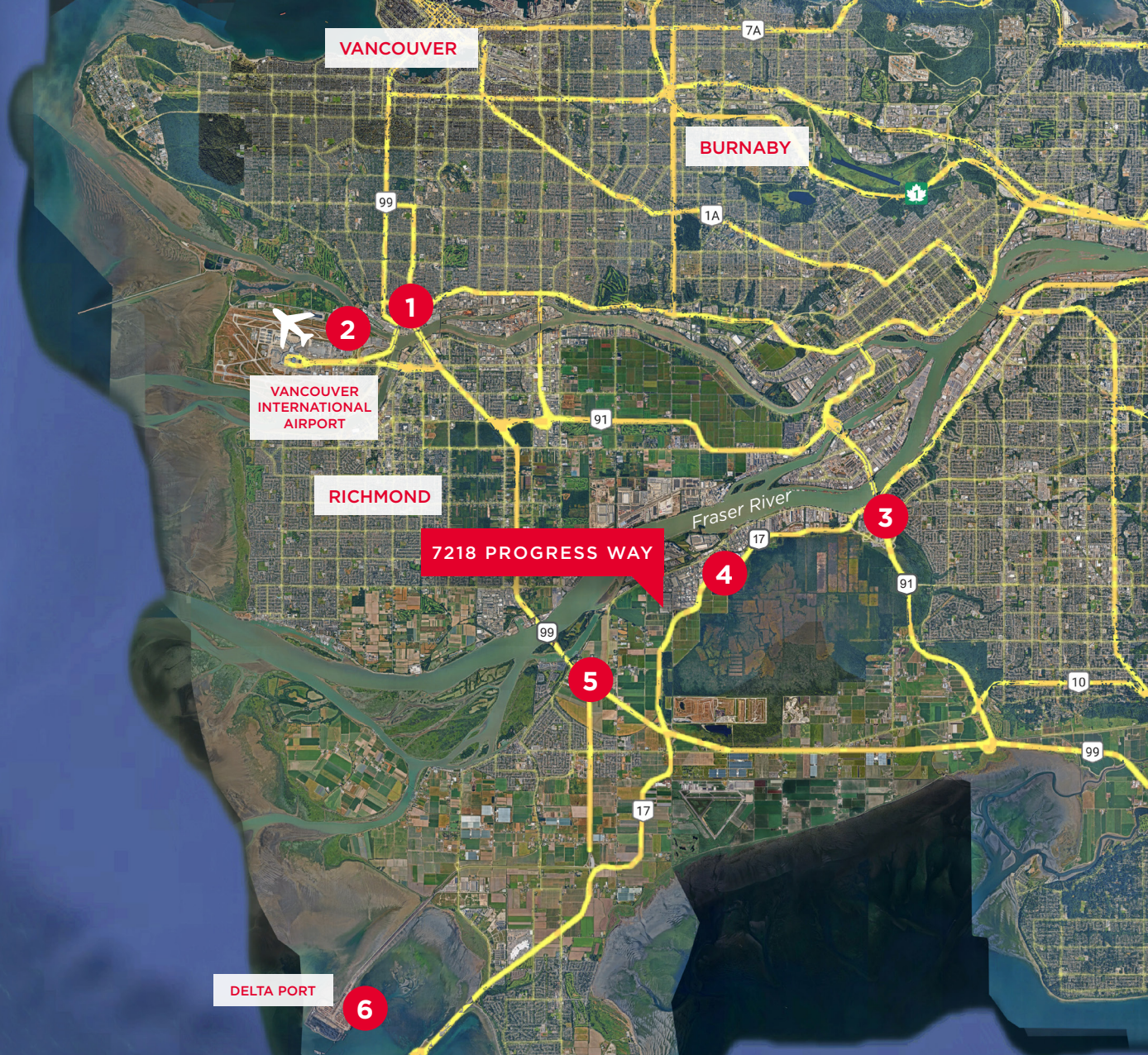


MEZZANINE

*Above plans are not exactly as built



LOCATION MAP



CONTACT US:

JORDAN SENGARA

Personal Real Estate Corporation
Vice President
+1 604 640 5845
jordan.sengara@cushwake.com

ERIC RICE

Personal Real Estate Corporation
Vice President, Industrial
+1 604 640 5877
eric.rice@cushwake.com



DRIVE TIMES TO/FROM 7218 PROGRESS WAY

1.	South Vancouver	20 mins
2.	Vancouver International Airport	20 mins
3.	Highway 91	10 mins
4.	South Fraser Perimeter Road (Hwy 17)	7 mins
5.	Highway 99	7 mins
6.	Delta Port	20 mins

700 West Georgia Street, Suite 1200 / Toronto Dominion Tower, Pacific Centre / Vancouver, BC V7Y 1A1 / +1 604 683 3111 / cushmanwakefield.ca

©2025 Cushman & Wakefield. All rights reserved. The information contained in this communication is strictly confidential. This information has been obtained from sources believed to be reliable but has not been verified. NO WARRANTY OR REPRESENTATION, EXPRESS OR IMPLIED, IS MADE AS TO THE CONDITION OF THE PROPERTY (OR PROPERTIES) REFERENCED HEREIN OR AS TO THE ACCURACY OR COMPLETENESS OF THE INFORMATION CONTAINED HEREIN, AND SAME IS SUBMITTED SUBJECT TO ERRORS, OMISSIONS, CHANGE OF PRICE, RENTAL OR OTHER CONDITIONS, WITHDRAWAL WITHOUT NOTICE, AND TO ANY SPECIAL LISTING CONDITIONS IMPOSED BY THE PROPERTY OWNER(S). ANY PROJECTIONS, OPINIONS OR ESTIMATES ARE SUBJECT TO UNCERTAINTY AND DO NOT SIGNIFY CURRENT OR FUTURE PROPERTY PERFORMANCE. PD-150783 V6

