

**441**  
**DONELSON PIKE**



Precision

**SUBLEASE SPACE  
AVAILABLE  
2,955 RSF**



**CUSHMAN &  
WAKEFIELD**



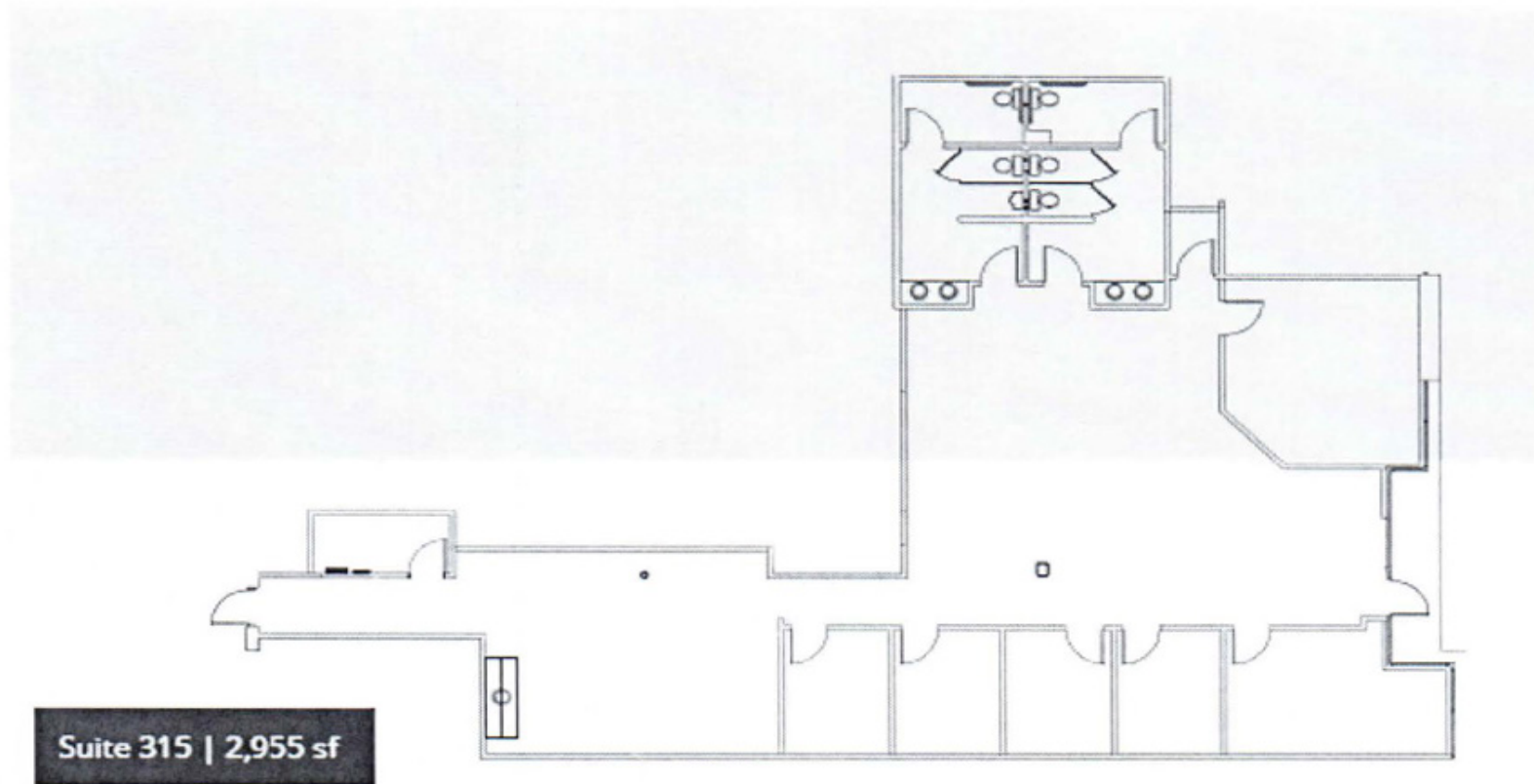
# // AVAILABLE SPACE

**FLOOR/SUITE**  
SUITE 315

**AVAILABLE SPACE**  
2,955 RSF

**TERM THRU**  
1/31/2027

**SPACE NOTES**  
PARTIALLY FURNISHED



# // GALLERY





# // GALLERY





# 441

## DONELSON PIKE



### CONTACT

JOSH FELDMAN  
Executive Director  
+1 312 424 8091  
[josh.feldman@cushwake.com](mailto:josh.feldman@cushwake.com)

BLAKE NEWTON  
Managing Director  
+1 615 301 2915  
[blake.newton@cushwake.com](mailto:blake.newton@cushwake.com)

©2024 Cushman & Wakefield. All rights reserved. The information contained in this communication is strictly confidential. This information has been obtained from sources believed to be reliable but has not been verified. NO WARRANTY OR REPRESENTATION, EXPRESS OR IMPLIED, IS MADE AS TO THE CONDITION OF THE PROPERTY (OR PROPERTIES) REFERENCED HEREIN OR AS TO THE ACCURACY OR COMPLETENESS OF THE INFORMATION CONTAINED HEREIN, AND SAME IS SUBMITTED SUBJECT TO ERRORS, OMISSIONS, CHANGE OF PRICE, RENTAL OR OTHER CONDITIONS, WITHDRAWAL WITHOUT NOTICE, AND TO ANY SPECIAL LISTING CONDITIONS IMPOSED BY THE PROPERTY OWNER(S). ANY PROJECTIONS, OPINIONS OR ESTIMATES ARE SUBJECT TO UNCERTAINTY AND DO NOT SIGNIFY CURRENT OR FUTURE PROPERTY PERFORMANCE.