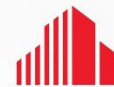


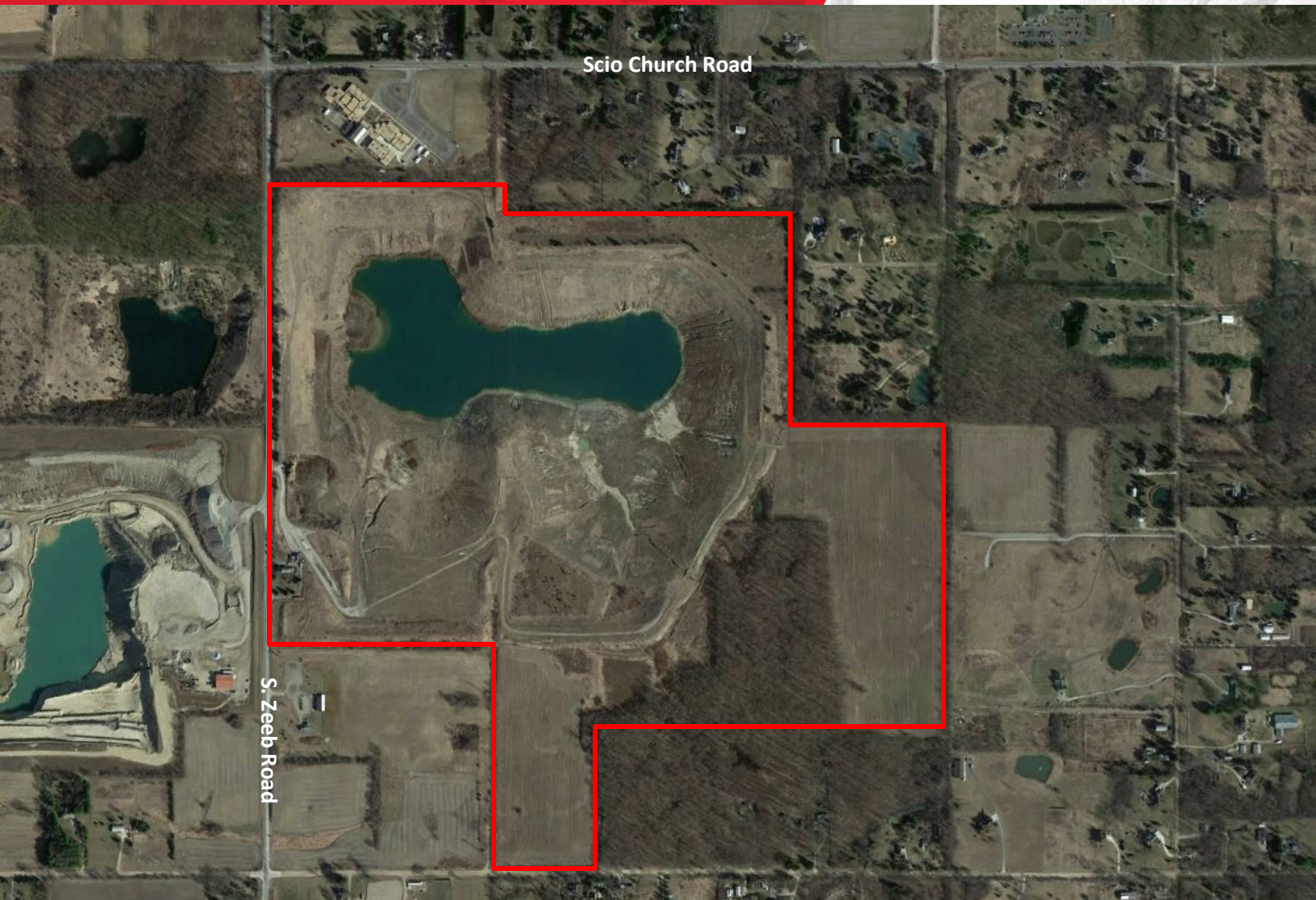
FOR SALE

2575 S. Zeeb Road

Ann Arbor, Michigan



**CUSHMAN &
WAKEFIELD**



264 Acres for Sale in Ann Arbor

- 135 usable acres to accommodate several different development projects
- Zoning consists of Natural Resource District (NR), Agricultural District (AG), Planned Unit Development (PUD)
- Currently on septic and well water
- Frontage: ½ mile on S. Zeeb Road; +/- 600 feet on Waters Road
- Major crossroads: S. Zeeb Road and Scio Church Road

Sale Price: \$2,500,000 (\$9,470/acre)

Contact

Steve Kozak
Director
+1 248 358 6107
steve.kozak@cushwake.com

Kyle Passage
Director
+1 248 358 6113
kyle.passage@cushwake.com



27777 Franklin Road, Suite 1050
Southfield, Michigan 48034
Main +1 248 358 6100
cushmanwakefield.com

FOR SALE
2575 S. Zeeb Road
Ann Arbor, Michigan



S. Zeeb Road



Entrance on S. Zeeb Road



Just inside the entrance on S. Zeeb Road

Contact

Steve Kozak
Director
+1 248 358 6107
steve.kozak@cushwake.com

Kyle Passage
Director
+1 248 358 6113
kyle.passage@cushwake.com

27777 Franklin Road, Suite 1050
Southfield, Michigan 48034
Main +1 248 358 6100
cushmanwakefield.com

FOR SALE
2575 S. Zeeb Road
Ann Arbor, Michigan



Quarry view from entrance on S. Zeeb Road



Quarry on property



Quarry on property



Quarry on property

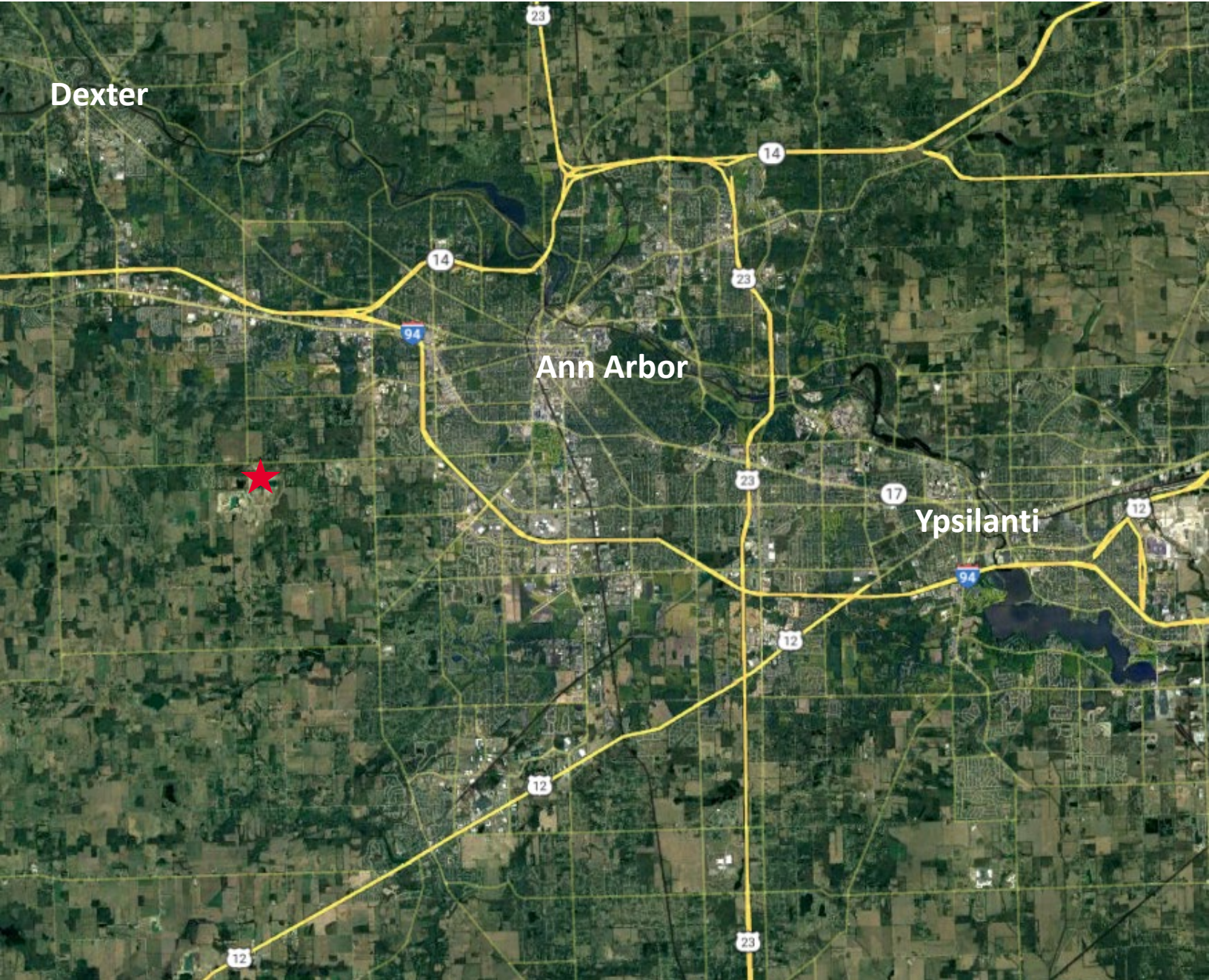
Contact

Steve Kozak
Director
+1 248 358 6107
steve.kozak@cushwake.com

Kyle Passage
Director
+1 248 358 6113
kyle.passage@cushwake.com

27777 Franklin Road, Suite 1050
Southfield, Michigan 48034
Main +1 248 358 6100
cushmanwakefield.com

FOR SALE
2575 S. Zeeb Road
Ann Arbor, Michigan



Contact

Steve Kozak
Director
+1 248 358 6107
steve.kozak@cushwake.com

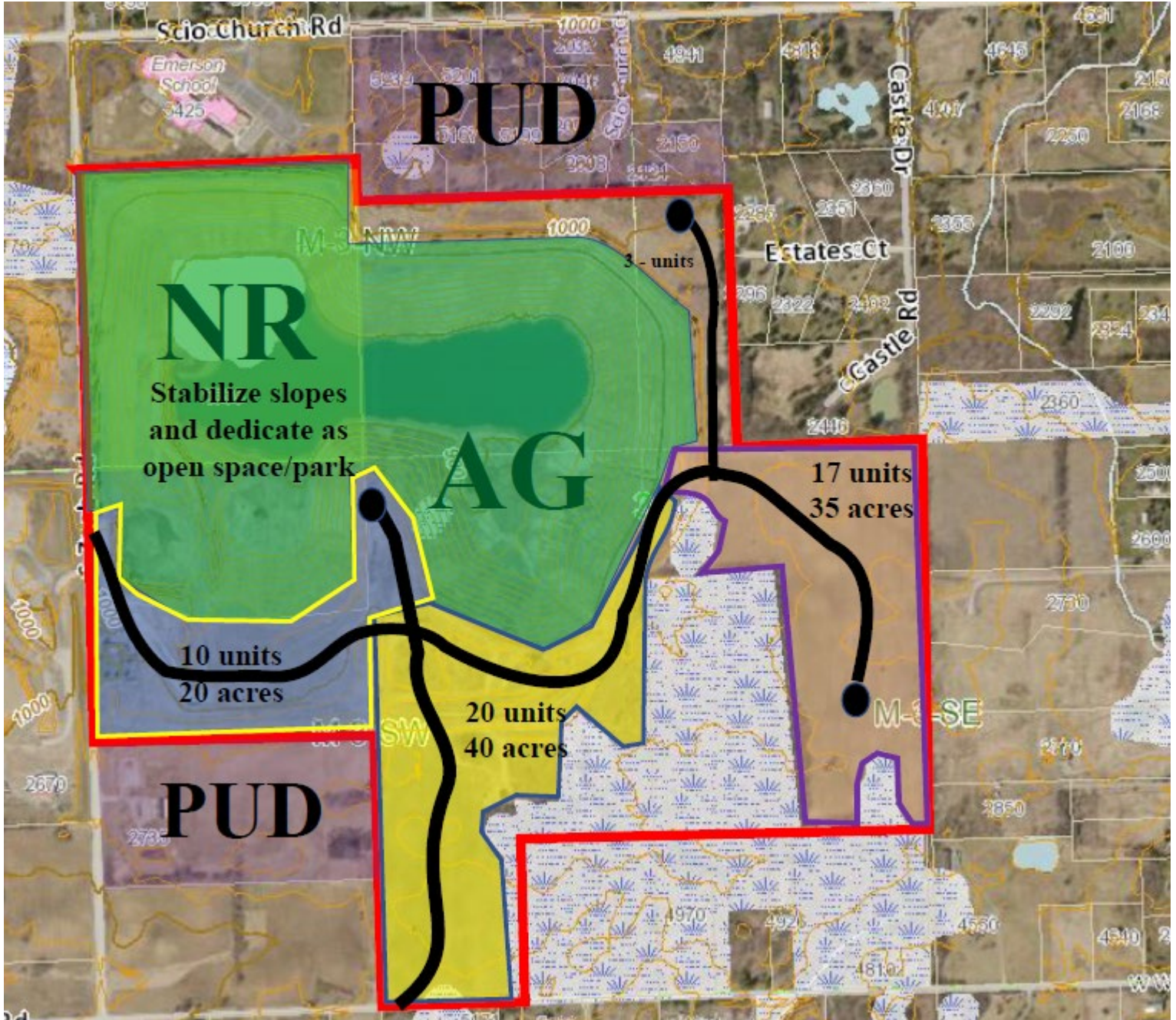
Kyle Passage
Director
+1 248 358 6113
kyle.passage@cushwake.com

27777 Franklin Road, Suite 1050
Southfield, Michigan 48034
Main +1 248 358 6100
cushmanwakefield.com

FOR SALE
2575 S. Zeeb Road
Ann Arbor, Michigan



Potential Housing Development



 Potential Roads

 Wooded Area

Contact

Steve Kozak
Director
+1 248 358 6107
steve.kozak@cushwake.com

Kyle Passage
Director
+1 248 358 6113
kyle.passage@cushwake.com

27777 Franklin Road, Suite 1050
Southfield, Michigan 48034
Main +1 248 358 6100
cushmanwakefield.com