



FOR LEASE

ARLINGTON SQUARE

3300 WASHTENAW AVENUE
ANN ARBOR, MI 48104



CUSHMAN &
WAKEFIELD



2nd floor space ideal for retail,
medical office, and general
office use

.....



Across the street from abundant
retail including Arborland Center,
Whole Foods, Barnes & Noble,
Qdoba & many more

.....



65 parking spaces;
underground parking available

.....



High visibility/traffic at the
corner of Washtenaw Avenue
and Huron Parkway with pylon
signage available

.....



Immediate proximity to US-23



CONTACT

Kyle Passage

Director
+1 248 358 6113
kyle.passage@cushwake.com

Tony AvenDt

Executive Director
+1 248 358 6115
tony.avenDt@cushwake.com

27777 Franklin Road, Suite 1050
Southfield, Michigan 48034
Main +1 248 358 6100
cushmanwakefield.com

FOR LEASE

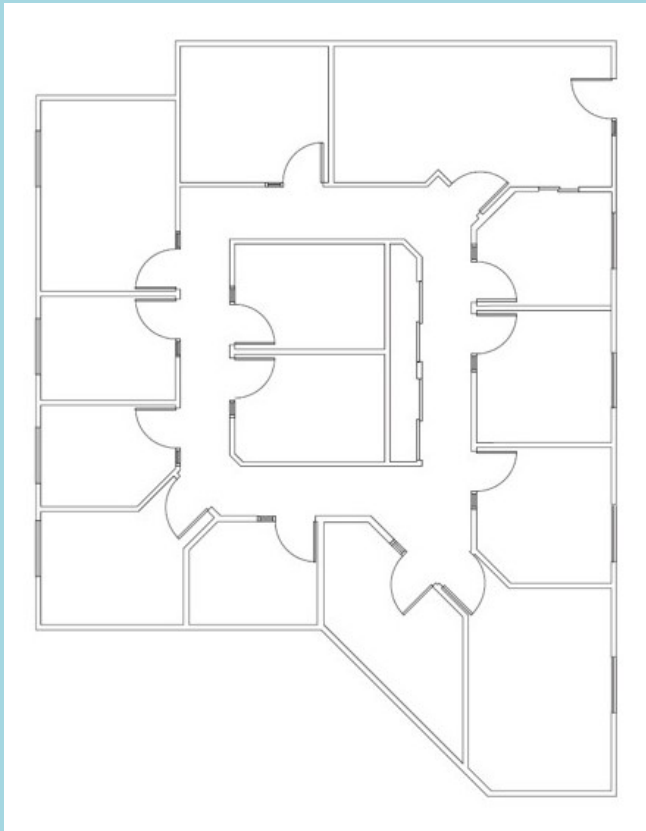
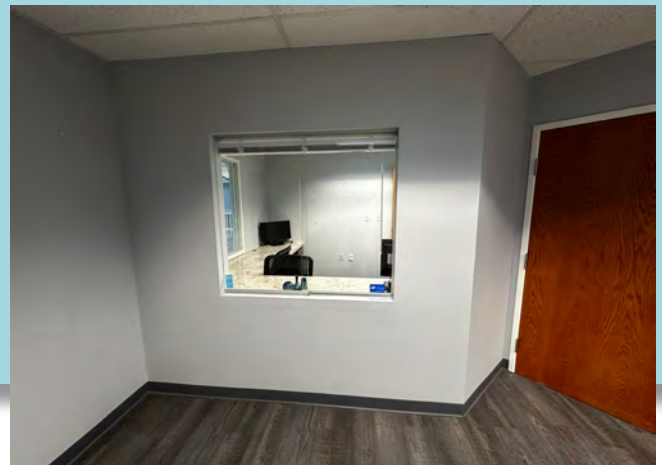
ARLINGTON SQUARE

3300 WASHTENAW AVENUE
ANN ARBOR, MI 48104

SUITE 265

2,228 RSF

\$19.50/SF + Utilities



CONTACT

Kyle Passage

Director
+1 248 358 6113
kyle.passage@cushwake.com

Tony Avendt

Executive Director
+1 248 358 6115
tony.avendt@cushwake.com

27777 Franklin Road, Suite 1050
Southfield, Michigan 48034
Main +1 248 358 6100
cushmanwakefield.com

FOR LEASE

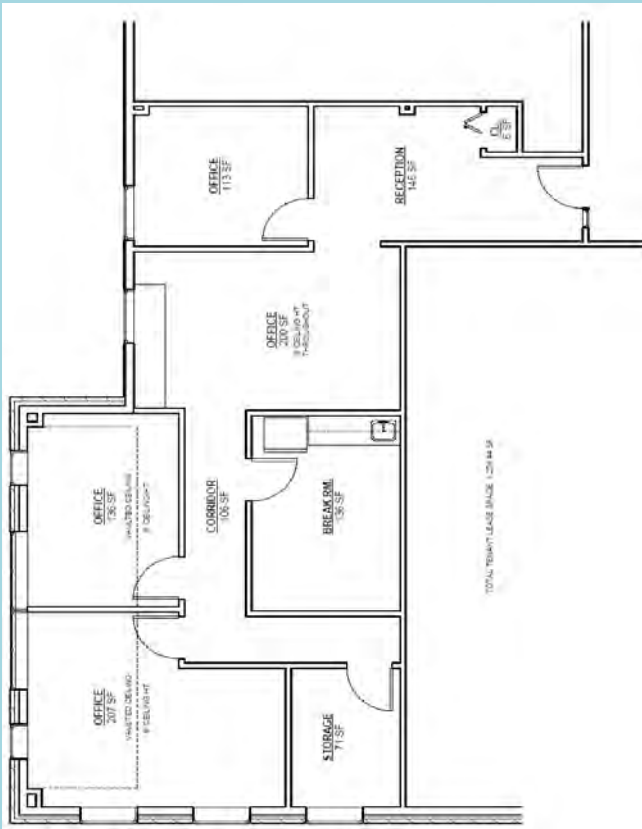
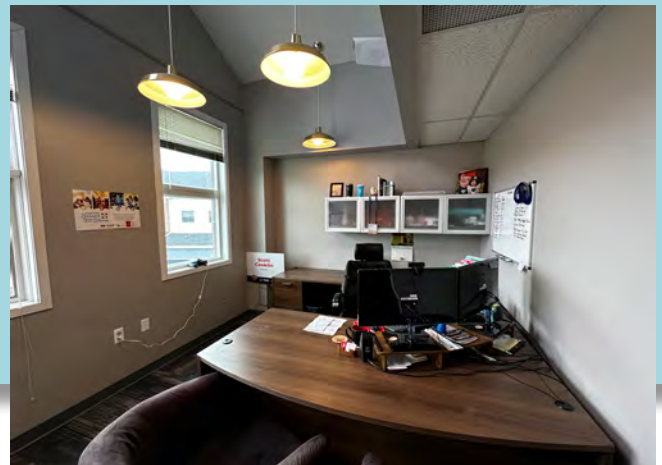
ARLINGTON SQUARE

3300 WASHTENAW AVENUE
ANN ARBOR, MI 48104

SUITE 285

1,393 RSF

\$19.50/SF + Utilities



CONTACT

Kyle Passage

Director
+1 248 358 6113
kyle.passage@cushwake.com

Tony Avendt

Executive Director
+1 248 358 6115
tony.avendt@cushwake.com

27777 Franklin Road, Suite 1050
Southfield, Michigan 48034
Main +1 248 358 6100
cushmanwakefield.com

AERIAL



CONTACT

Kyle Passage

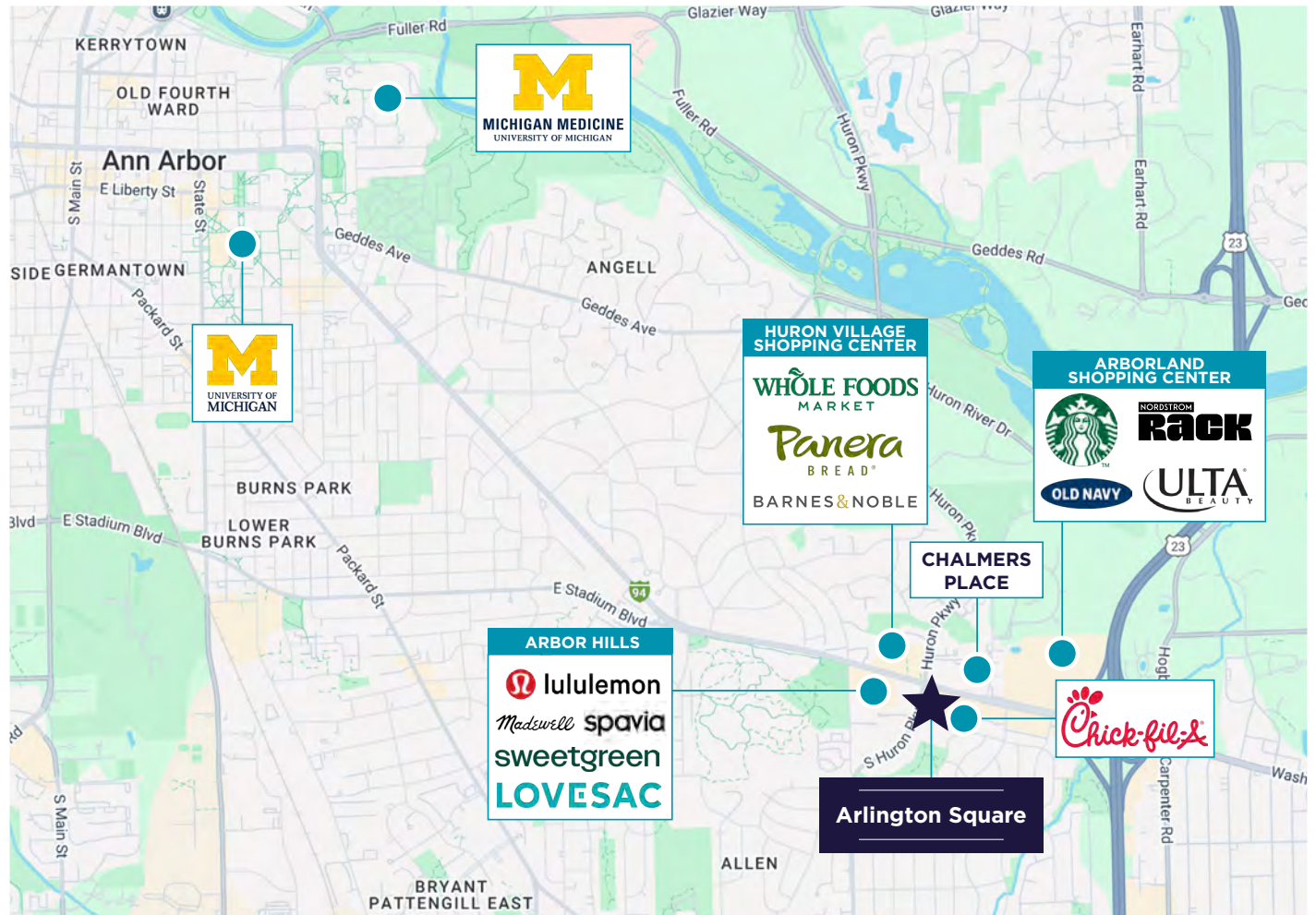
Director
+1 248 358 6113
kyle.passage@cushwake.com

Tony Avendt

Executive Director
+1 248 358 6115
tony.avendt@cushwake.com

27777 Franklin Road, Suite 1050
Southfield, Michigan 48034
Main +1 248 358 6100
cushmanwakefield.com

AMENITIES MAP



Arbor Hills Shopping Mall



University of Michigan Campus



University of Michigan Hospital

CONTACT

Kyle Passage

Director
+1 248 358 6113
kyle.passage@cushwake.com

Tony Avenndt

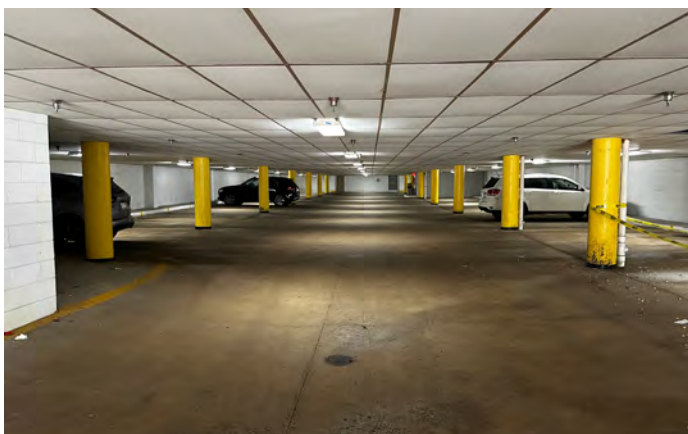
Executive Director
+1 248 358 6115
tony.avenndt@cushwake.com

27777 Franklin Road, Suite 1050
Southfield, Michigan 48034
Main +1 248 358 6100
cushmanwakefield.com

LOBBY INTERIOR



PARKING GARAGE



CONTACT

Kyle Passage

Director
+1 248 358 6113
kyle.passage@cushwake.com

Tony AvenDt

Executive Director
+1 248 358 6115
tony.avenDt@cushwake.com

27777 Franklin Road, Suite 1050
Southfield, Michigan 48034
Main +1 248 358 6100
cushmanwakefield.com

ARLINGTON SQUARE

3300 WASHTENAW AVENUE

ANN ARBOR, MI 48104

