

# 6120

PASEO DEL NORTE

CARLSBAD, CA



## OFFICE SPACE FOR LEASE

Suites starting at less than 200 RSF



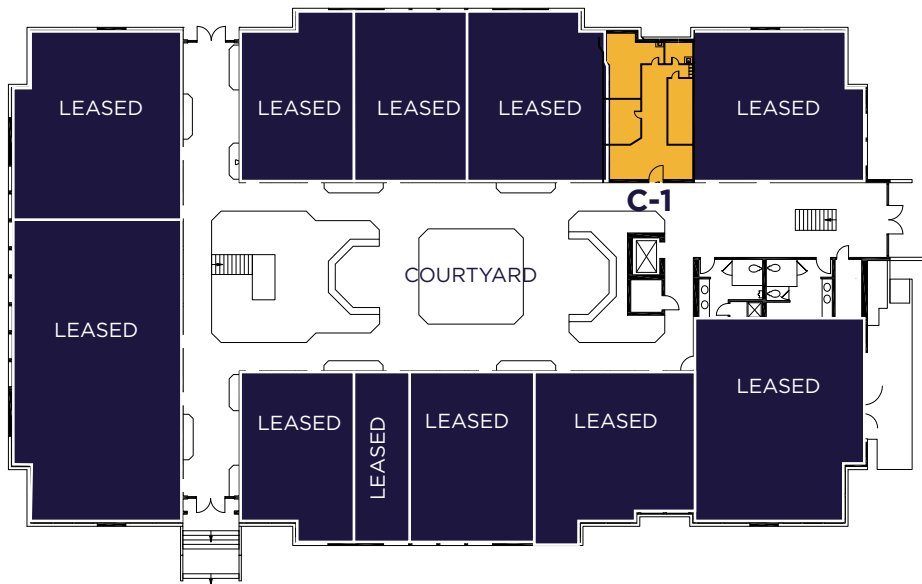
# // PROPERTY FEATURES

- Two-story, multi-tenant office and medical building totaling approximately 30,366 rentable square feet
- Located directly off of Palomar Airport Rd. providing unparalleled access to Interstate-5
- Carlsbad's most flexible R-P zoning permits the widest range of uses for office, medical office and specific retail services
- Ocean views and balconies in select suites
- Building is fully secure with new store-front glass entry and elevator
- Atrium-style setting with open air courtyard allowing for glass on both sides of each suite, providing abundant natural light
- Carlsbad Ranch Market, one of Carlsbad's most widely-known lunch dining destinations (deli, salad bar, juice bar, grocery), is located on the ground level
- Unsurpassed access to food, shopping and services within walking distance (including Tip Top Meats, Simon Property Group's Premium Outlet Malls, Island's Fine Burgers, P.F. Chang's, King's Fish House, Costco, In-N-Out, and Chick-fil-A)
- 2.6 miles to Coaster Station providing employee commute options



// **6120 PASEO DEL NORTE**  
Carlsbad, CA 92011

## FIRST FLOOR



## SECOND FLOOR



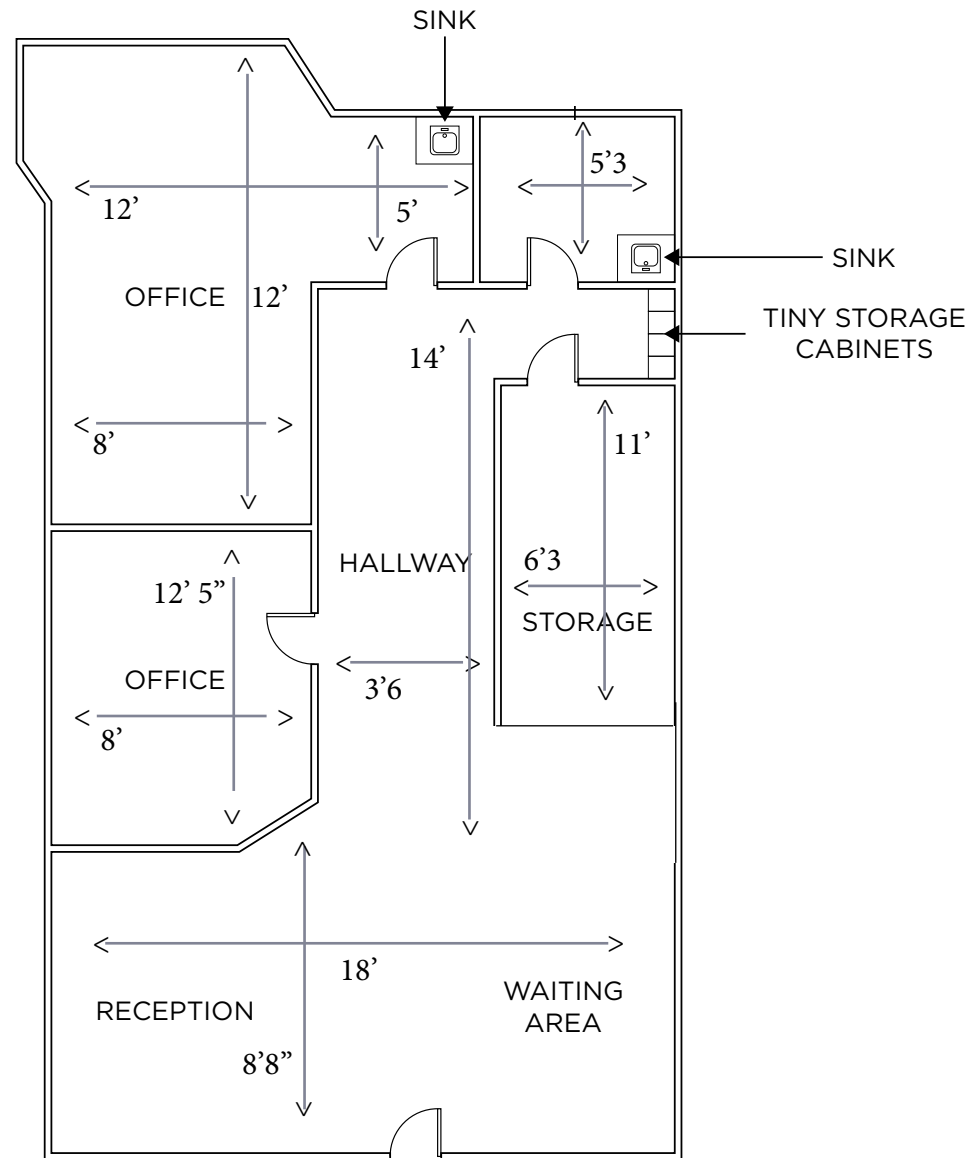
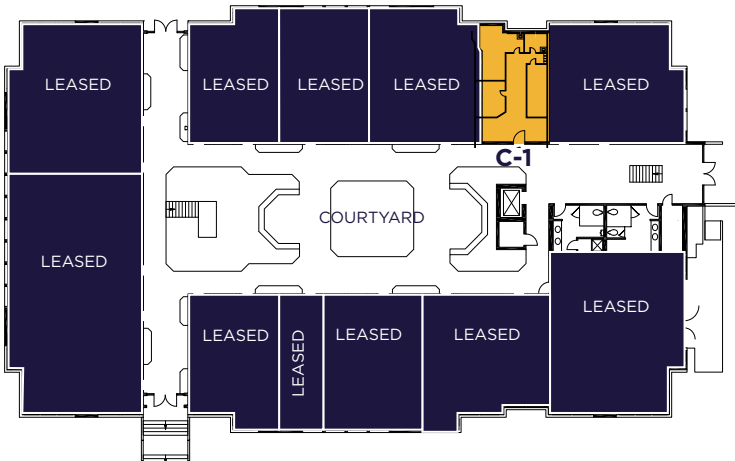
## // AVAILABILITY

FLOOR	SUITE #	RSF	RATE	AVAILABLE
1	C-1	662	\$2.45/SF + U	IMMEDIATELY
2	E-2	1,674	\$2.45/SF + U	IMMEDIATELY
2	F-2	1,024	\$2.45/SF + U	APRIL 2026
2	i2-2	208	\$728/MONTH + U	IMMEDIATELY
2	i2-3	212	\$742/MONTH + U	IMMEDIATELY
2	i2-7	229	\$835/MONTH + U	MAY 2026
2	i2-8	187	\$683/MONTH + U	IMMEDIATELY
2	i2-9 & i2-10	506	\$1,847/MONTH + U	IMMEDIATELY
2	N2	441	\$1,191/MONTH + U	IMMEDIATELY

## // SUITE C-1

- 2 PRIVATE OFFICES
- BREAK ROOM
- RECEPTION SPACE
- STORAGE CLOSET

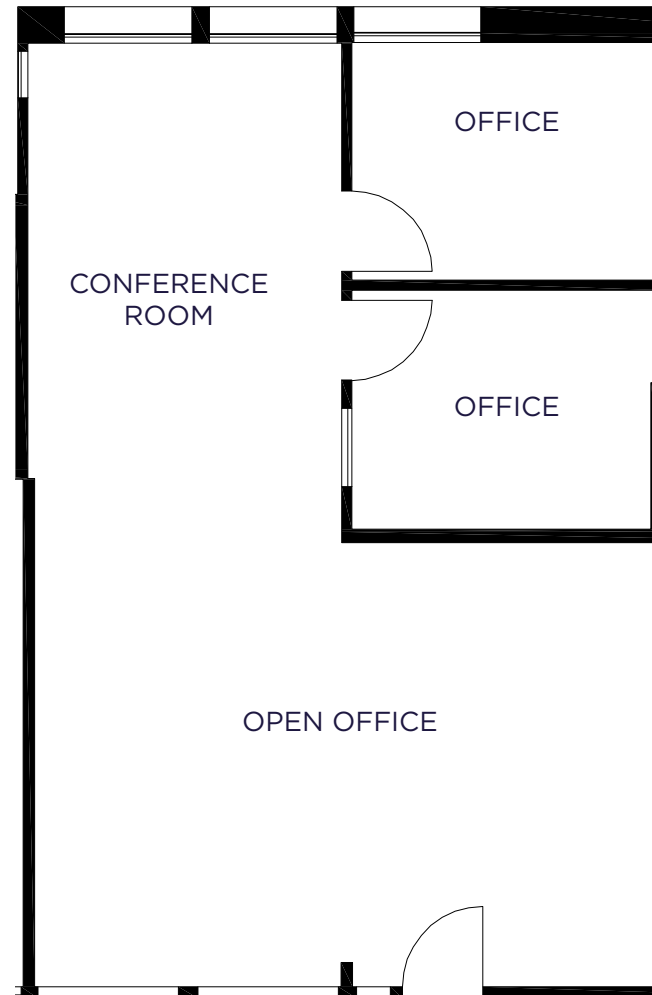
FIRST FLOOR



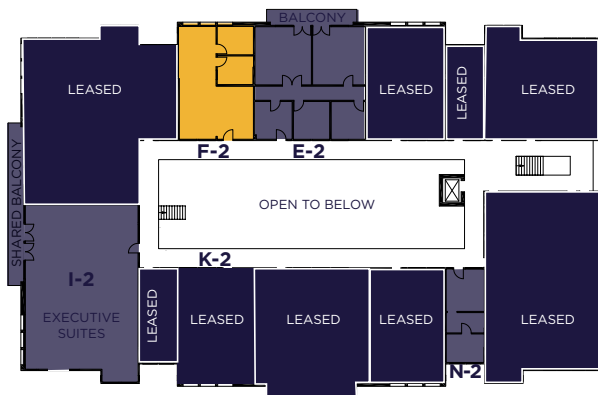


## // SUITE F-2

- OPEN OFFICE
- 2 PRIVATE OFFICES
- CONFERENCE ROOM

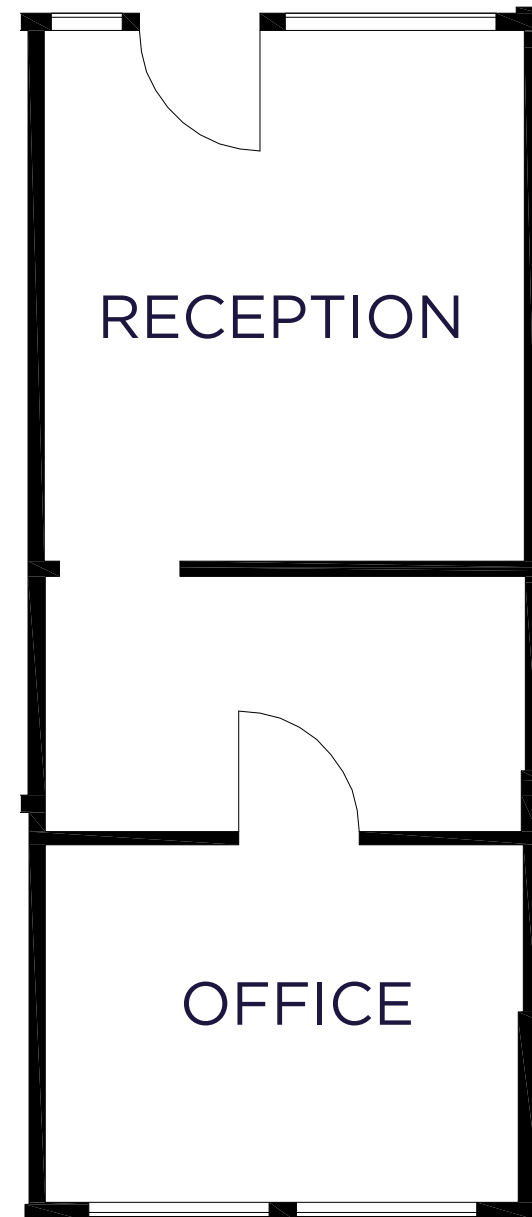


### SECOND FLOOR



## // SUITE N-2

- RECEPTION SPACE
- PRIVATE OFFICE



# // GALLERY



**CARLSBAD COASTAL OFFICE**



**COURTYARD BUILDING**



**CARLSBAD RANCH MARKET ON SITE**

# 6120

PASEO DEL NORTE  
CARLSBAD, CA



## CONTACT

JOE ANDERSON  
Senior Director  
+1 760 415 3052  
joe.anderson@cushwake.com

DANIELLE BERGSON  
Associate  
+1 858 625 5202  
danielle.bergson@cushwake.com



©2025 Cushman & Wakefield. All rights reserved. The information contained in this communication is strictly confidential. This information has been obtained from sources believed to be reliable but has not been verified. NO WARRANTY OR REPRESENTATION, EXPRESS OR IMPLIED, IS MADE AS TO THE CONDITION OF THE PROPERTY (OR PROPERTIES) REFERENCED HEREIN OR AS TO THE ACCURACY OR COMPLETENESS OF THE INFORMATION CONTAINED HEREIN, AND SAME IS SUBMITTED SUBJECT TO ERRORS, OMISSIONS, CHANGE OF PRICE, RENTAL OR OTHER CONDITIONS, WITHDRAWAL WITHOUT NOTICE, AND TO ANY SPECIAL LISTING CONDITIONS IMPOSED BY THE PROPERTY OWNER(S). ANY PROJECTIONS, OPINIONS OR ESTIMATES ARE SUBJECT TO UNCERTAINTY AND DO NOT SIGNIFY CURRENT OR FUTURE PROPERTY PERFORMANCE.