



824-826 BROADVIEW AVENUE

Toronto, ON

Retail Unit For Lease Along Broadview Avenue

WELCOME TO 824-826 BROADVIEW AVENUE

824-826 Broadview Avenue is situated in a vibrant residential neighbourhood in Toronto's east end, an area experiencing significant population growth and increasing residential density. The property is just steps from Broadview Subway Station on the Bloor-Danforth line, providing excellent transit connectivity. This location benefits from strong neighbourhood character, steady foot traffic, and a growing local population, making it an ideal opportunity for a wide range of retail uses. Targeting clean uses.

DETAILS

GROUND FLOOR	1,086 SF (Divisible)
NET RENT	Contact Listing Agents
ADDITIONAL RENT	\$19.00 PSF (2025)
TERM	5-10 years
AVAILABILITY	Immediate

HIGHLIGHTS

- Prime frontage on Broadview Avenue, just north of Danforth Avenue
- Potential to demise the units
- Bright, open space with exceptional ceiling heights
- Includes two separate basements, each with washrooms
- Steps from Broadview Subway Station on the Bloor-Danforth line

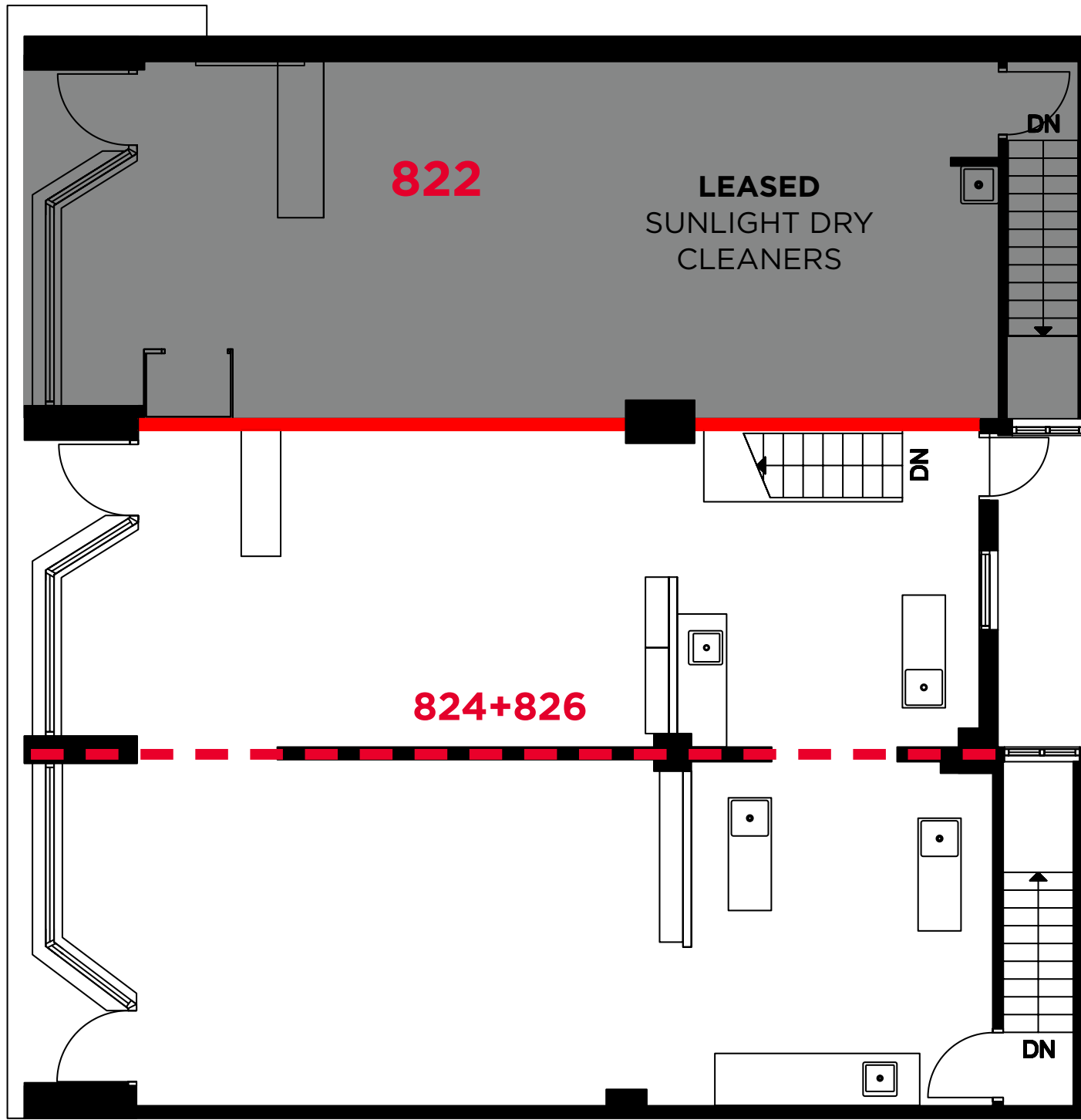
PROPERTY OVERVIEW



FLOOR PLAN

GROUND FLOOR - 1,086 SF

BROADVIEW AVENUE



NEIGHBOURHOOD OVERVIEW

NEIGHBOURHOOD AMENITIES

1. SUPERNOVA Coffee

2. Pharmacare Drug Mart

3. Glamazing Laser Clinic

4. Broadview Veterinary Hospital

5. Don Valley Medical Centre

6. Broadview Espresso

7. Rexall

8. Detalles Gift Shop

9. I.D.A. - ProCare Pharmacy

10. Kitchenette Toronto

11. Tortaco

12. Ryus Noodle Bar

13. CIBC

14. The Broadview Diner

15. A&W

16. Antiques
17. Si Espresso & Pasticceria Bar

18. NoFrills

19. Burger King

20. Pi Co.

21. imPerfect Fresh Eats

22. Ali Baba's

23. COBS Bread

24. Azura

25. Shoppers Drug Mart

26. Dough Bakeshop

27. Fresh Floral Creations

28. LCBO

29. Bulk Barn

30. Subway

31. Krispy Kreme Café

DEMOGRAPHICS (1KM)

Population
15,317

Traffic Score
95

Daytime Population
19,488

Pedestrian Score
99

Total Households
7,153

Transit Score
100

Avg. Household Income
167,655





161 Bay Street, Suite 1500
Toronto, ON M5J 2S1 | Canada

CARMEN SIEGEL

Associate Vice President
Urban Retail Services
+1 416 359 2365
+1 416 648 0451
carmen.siegel@cushwake.com

HANNAH KINNEY

Senior Associate
Retail Services
+1 416 359 2390
+1 647 294 0367
hannah.kinney@cushwake.com

CONTACT

©2025 Cushman & Wakefield. All rights reserved. The information contained in this communication is strictly confidential. This information has been obtained from sources believed to be reliable but has not been verified. NO WARRANTY OR REPRESENTATION, EXPRESS OR IMPLIED, IS MADE AS TO THE CONDITION OF THE PROPERTY (OR PROPERTIES) REFERENCED HEREIN OR AS TO THE ACCURACY OR COMPLETENESS OF THE INFORMATION CONTAINED HEREIN, AND SAME IS SUBMITTED SUBJECT TO ERRORS, OMISSIONS, CHANGE OF PRICE, RENTAL OR OTHER CONDITIONS, WITHDRAWAL WITHOUT NOTICE, AND TO ANY SPECIAL LISTING CONDITIONS IMPOSED BY THE PROPERTY OWNER(S). ANY PROJECTIONS, OPINIONS OR ESTIMATES ARE SUBJECT TO UNCERTAINTY AND DO NOT SIGNIFY CURRENT OR FUTURE PROPERTY PERFORMANCE.

