

# FOR LEASE

39,449 SF EXCELLENT QUALITY,  
HIGH CEILING DISTRIBUTION SPACE



# 1725

COAST MERIDIAN ROAD | PORT COQUITLAM, BC

CONNEST



CUSHMAN &  
WAKEFIELD



# PROPERTY FEATURES

## LOCATION

This exceptional quality distribution facility is located one block north of the Mary Hill ByPass, just minutes from the Lougheed and Trans Canada Highways. Both the Port Mann and Golden Ears Bridges are within 10 minutes of the location and Downtown Vancouver is just 30 minutes to the west.

## ZONING

M2 Heavy Industrial, permitting a wide range of distribution, manufacturing, assembly, processing, service and repair. The Landlord will restrict uses that create excessive odours or airborne particles.

## FEATURES

- 30’ clear ceiling height
- Five (5)insulated dock doors with bumpers, levelers & lights
- Two (2) drive-in (12’ x 14’) doors
- T-5 energy-efficient fluorescent lighting
- Fully sprinklered
- 200 Amp 600 Volt 3-phase electrical
- Pallet storage over loading docks
- 3 washrooms plus kitchenette
- Bright, clean warehouse space



## AVAILABLE AREA

Main Floor Office	±1,300 SF
Warehouse	±38,149 SF
Total Available Area	±39,449 SF

## LEASE RATE

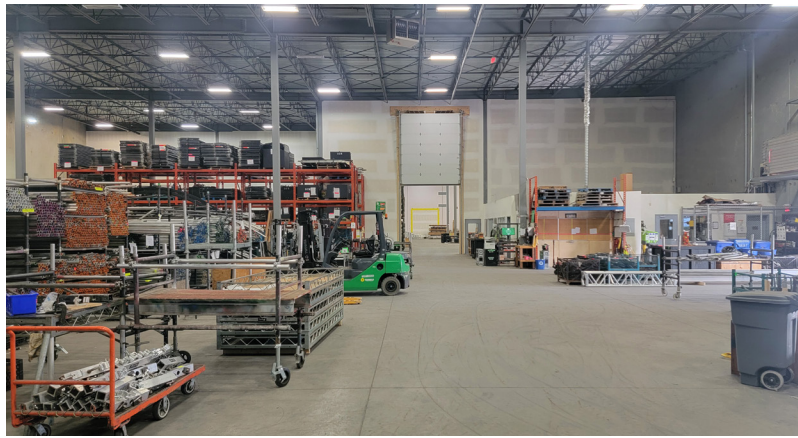
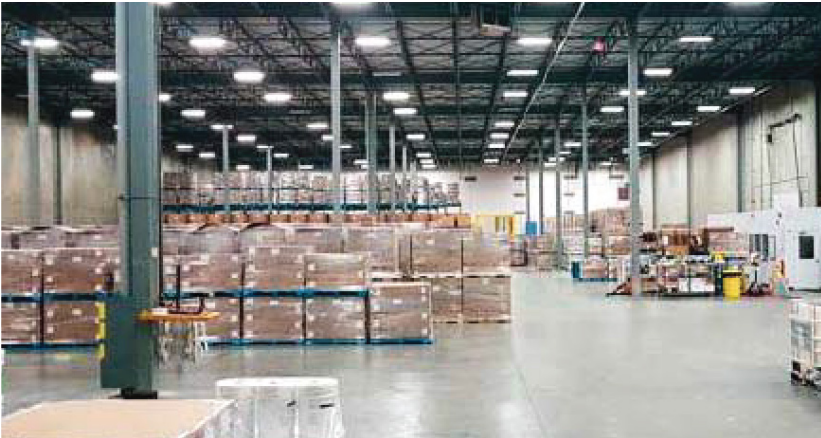
\$21.95 PSF, per annum, net

## ADDITIONAL RENT

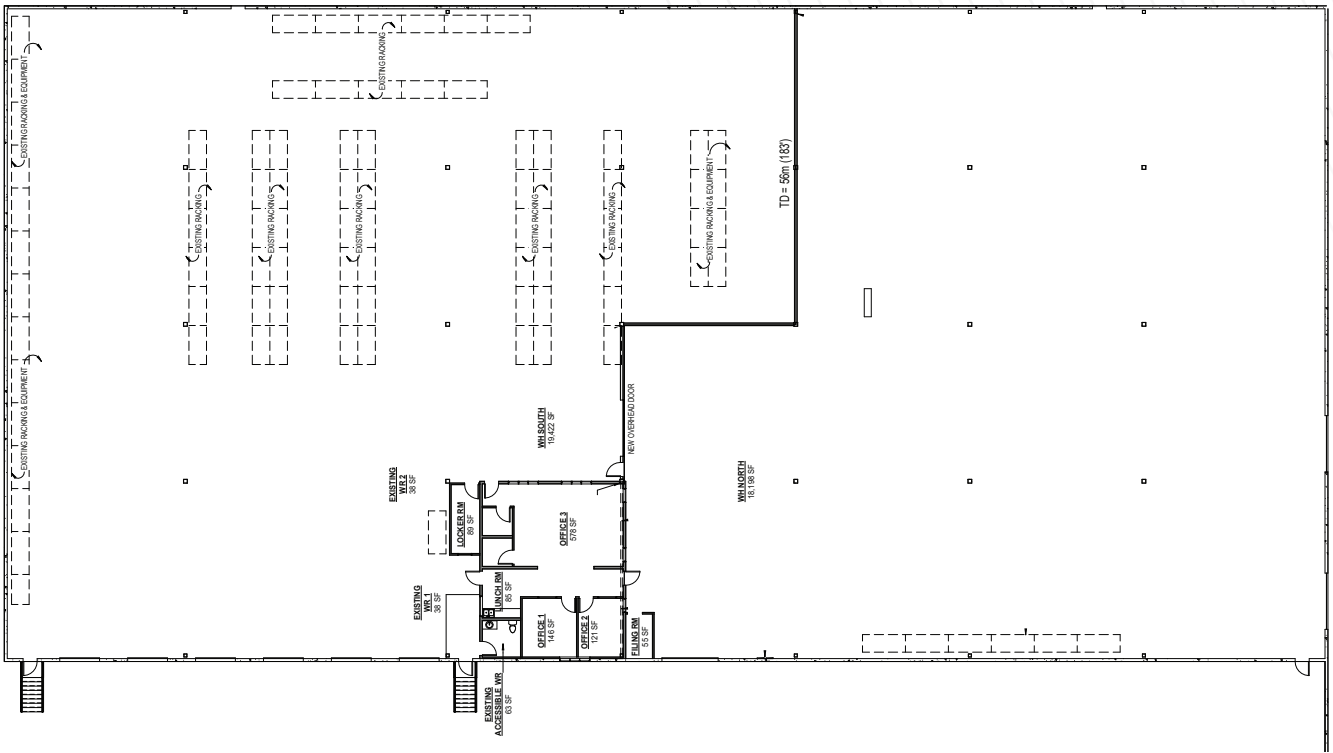
\$5.43 PSF plus management and admin fee (2026 estimate)

## AVAILABILITY

July 1, 2026

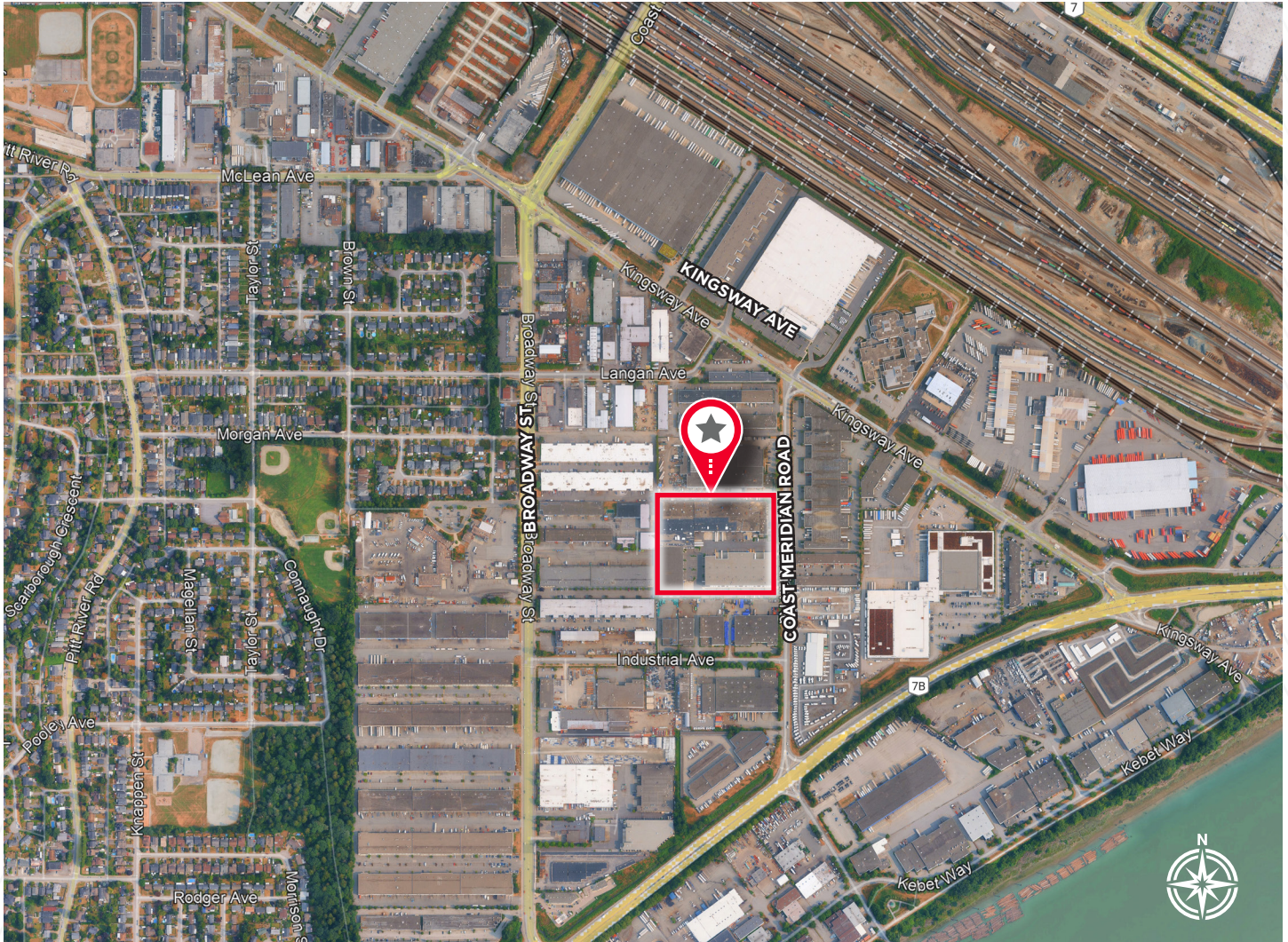


## FLOOR PLAN





# PROPERTY LOCATION



## CONTACT US

### RICK EASTMAN

Personal Real Estate Corporation  
Executive Vice President, Industrial  
+1 604 640 5863  
rick.eastman@cushwake.com

### KEVIN VOLZ

Personal Real Estate Corporation  
Vice President, Industrial  
+1 604 640 5851  
kevin.volz@cushwake.com

### ALEX EASTMAN

Senior Associate, Industrial  
+1 604 608 5933  
alex.eastman@cushwake.com

700 W Georgia Street, Suite 1200, Vancouver, BC V7Y 1A1 Canada | [cushmanwakefield.com](https://cushmanwakefield.com)

©2025 Cushman & Wakefield. All rights reserved. The material in this presentation has been prepared solely for information purposes, and is strictly confidential. Any disclosure, use, copying or circulation of this presentation (or the information contained within it) is strictly prohibited, unless you have obtained Cushman & Wakefield's prior written consent. The views expressed in this presentation are the views of the author and do not necessarily reflect the views of Cushman & Wakefield. Neither this presentation nor any part of it shall form the basis of, or be relied upon in connection with any offer, or act as an inducement to enter into any contract or commitment whatsoever. NO REPRESENTATION OR WARRANTY IS GIVEN, EXPRESS OR IMPLIED, AS TO THE ACCURACY OF THE INFORMATION CONTAINED WITHIN THIS PRESENTATION, AND CUSHMAN & WAKEFIELD IS UNDER NO OBLIGATION TO SUBSEQUENTLY CORRECT IT IN THE EVENT OF ERRORS.

## CONNEST

