

For Lease

Corporate Commons at Johnson Ranch

2440 Professional Dr, Roseville, CA 95661

±2,500 - ±10,500 SF OFFICE SPACE AVAILABLE



Chad Cook, MCR, SIOR, CCIM
Senior Director
chad.cook@cushwake.com
+1 916 764 1181
CA Lic. #01711687

Zach Mosle, CCIM
Director
zach.mosle@cushwake.com
+1 925 683 6822
CA Lic. #01924595



©2025 Cushman & Wakefield. All rights reserved. The information contained in this communication is strictly confidential. This information has been obtained from sources believed to be reliable but has not been verified. NO WARRANTY OR REPRESENTATION, EXPRESS OR IMPLIED, IS MADE AS TO THE CONDITION OF THE PROPERTY (OR PROPERTIES) REFERENCED HEREIN OR AS TO THE ACCURACY OR COMPLETENESS OF THE INFORMATION CONTAINED HEREIN, AND SAME IS SUBMITTED SUBJECT TO ERRORS, OMISSIONS, CHANGE OF PRICE, RENTAL OR OTHER CONDITIONS, WITHDRAWAL WITHOUT NOTICE, AND TO ANY SPECIAL LISTING CONDITIONS IMPOSED BY THE PROPERTY OWNER(S). ANY PROJECTIONS, OPINIONS OR ESTIMATES ARE SUBJECT TO UNCERTAINTY AND DO NOT SIGNIFY CURRENT OR FUTURE PROPERTY PERFORMANCE.

CUSHMANWAKEFIELD.COM

Corporate Commons at Johnson Ranch

2440 Professional Dr, Roseville, CA 95661

OVERVIEW

FOR LEASE

PREMISES

SWC of Douglas Blvd. & Professional Dr.

AVAILABLE SPACE:
±2,500 - ±10,500 SF

LEASE TYPE

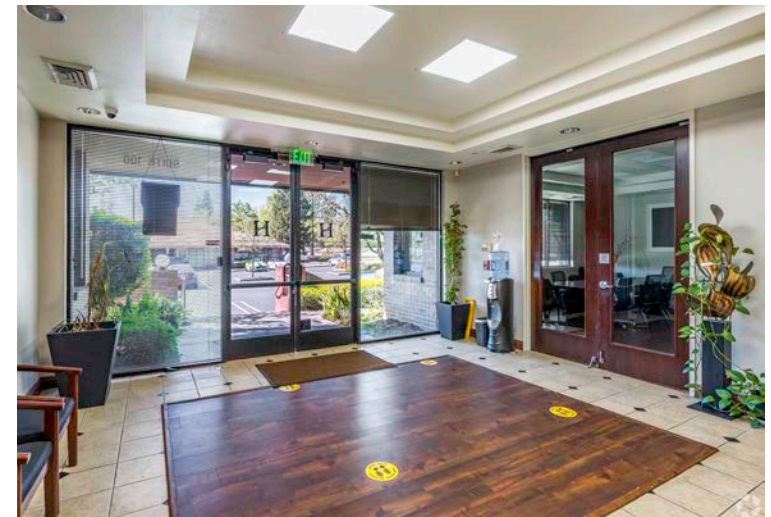
Direct

LEASE RATE

\$2.25/SF FSG

PROPERTY HIGHLIGHTS

- Professional Office Space
- Direct Entrance from Parking Lot
- Douglas Corridor
- Onsite parking 4.0/1,000 SF.
- Built 1998

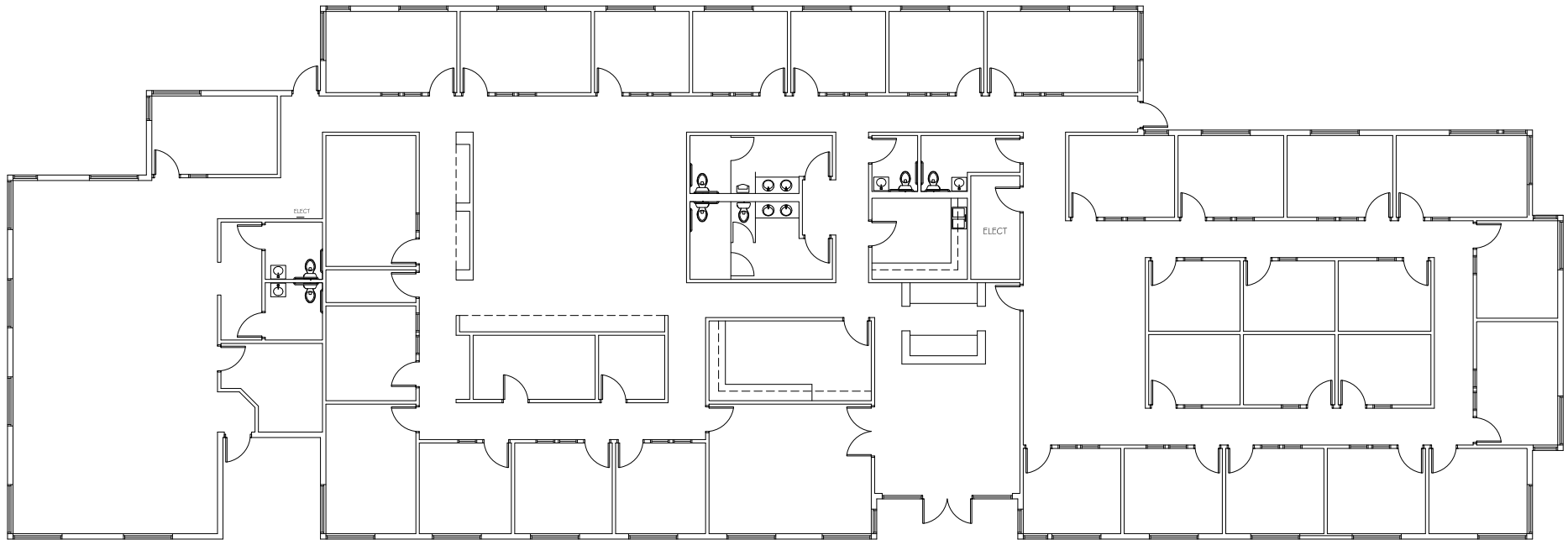


Corporate Commons at Johnson Ranch

2440 Professional Dr, Roseville, CA 95661

FLOOR PLAN

FOR LEASE



FLOOR PLAN
SCALE: 1/8" = 1'-0"

Corporate Commons at Johnson Ranch

2440 Professional Dr, Roseville, CA 95661

TRADE AREA MAP

FOR LEASE



Corporate Commons at Johnson Ranch

2440 Professional Dr, Roseville, CA 95661

±2,500 - ±10,500 SF OFFICE SPACE AVAILABLE FOR LEASE

Chad Cook, MCR, SIOR, CCIM
Senior Director

chad.cook@cushwake.com

+1 916 764 1181

CA Lic. #01711687

Zach Mosle, CCIM
Director

zach.mosle@cushwake.com

+1 925 683 6822

CA Lic. #01924595

CUSHMANWAKEFIELD.COM



©2025 Cushman & Wakefield. All rights reserved. The information contained in this communication is strictly confidential. This information has been obtained from sources believed to be reliable but has not been verified. NO WARRANTY OR REPRESENTATION, EXPRESS OR IMPLIED, IS MADE AS TO THE CONDITION OF THE PROPERTY (OR PROPERTIES) REFERENCED HEREIN OR AS TO THE ACCURACY OR COMPLETENESS OF THE INFORMATION CONTAINED HEREIN, AND SAME IS SUBMITTED SUBJECT TO ERRORS, OMISSIONS, CHANGE OF PRICE, RENTAL OR OTHER CONDITIONS, WITHDRAWAL WITHOUT NOTICE, AND TO ANY SPECIAL LISTING CONDITIONS IMPOSED BY THE PROPERTY OWNER(S). ANY PROJECTIONS, OPINIONS OR ESTIMATES ARE SUBJECT TO UNCERTAINTY AND DO NOT SIGNIFY CURRENT OR FUTURE PROPERTY PERFORMANCE.