

Plymouth Business Center

3900 Annapolis Lane North, Plymouth, MN



FOR LEASE



12 Building Development

Property Highlights

- Established business park with over 700,000 square feet of space
- Suite 105 available, 11,881 square feet
- Suite 300 available, 8,142 square feet
- Multiple product types including office/showroom, office/warehouse, and bulk/warehouse buildings
- Dock and drive-in loading
- Landmark visibility provides outstanding corporate identity and easy recognition for visiting clientele
- Exceptional access to I-494 via Highway 55 on the south and Rockford Road on the north
- Area amenities include childcare, retail shops, hotels and restaurants

Dave Paradise
Senior Director
+1 952 893 8226
dave.paradise@cushwake.com

Sydney Johnson, SIOR
Senior Director
+1 952 893 8840
sydney.johnson@cushwake.com

Cushman & Wakefield
3500 American Blvd W Suite 200
Minneapolis, MN 55431
cushmanwakefield.com

Plymouth Business Center

3900 Annapolis Lane North, Plymouth, MN



FOR LEASE

BUILDING INFORMATION

Building Size	46,046
Year Built	1981
Clear Height	12'
Bay Depth	88' x 112'
Column Spacing	28' x 28'
Power	1600 amp, 480 volt, 3 phase
Sprinklers	Sprinklered
Parking	2.56/1,000
Lease Rates	Negotiable
2026 Tax & Cam	\$3.74 PSF Tax <u>\$2.10 PSF CAM</u> \$5.84 PSF Total

Property Information

- 12 building development totalling over 700,000 sf
- Expansion capabilities within the complex
- Locally owned, professionally maintained and operated
- Excellent access to I-494 via Highway 55 & Rockford Road
- Area Amenities include childcare, retail shops, hotels and restaurants

Space Available

Suite	Total SF	Office SF	Warehouse SF	Loading	Availability
105	11,881	4,389	7,492	3 drive-ins	Now
300	8,142	--	8,142	3 drive-ins	Now

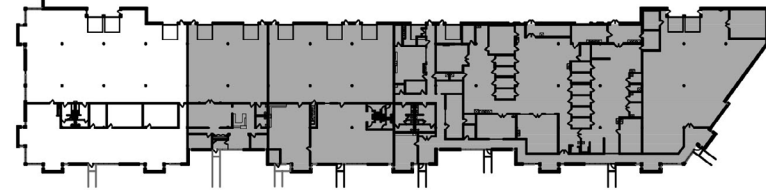
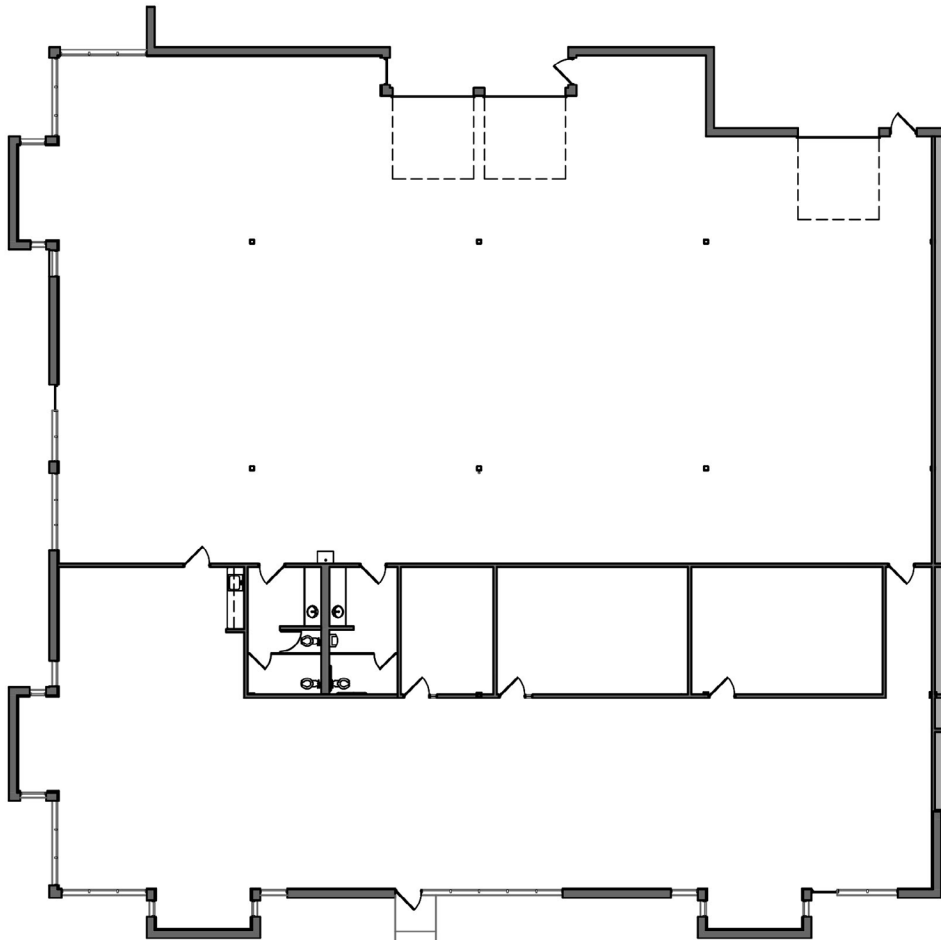
Plymouth Business Center

3900 Annapolis Lane North, Plymouth, MN



FOR LEASE

Suite 105



AVAILABLE SUITE 105

OFFICE	=	4,389 S.F.
WAREHOUSE	=	7,492 S.F.
TOTAL	=	11,881 S.F.

Dave Paradise
Senior Director
+1 952 893 8226
dave.paradise@cushwake.com

Sydney Johnson, SIOR
Senior Director
+1 952 893 8840
sydney.johnson@cushwake.com

Cushman & Wakefield
3500 American Blvd W Suite 200
Minneapolis, MN 55431
cushmanwakefield.com

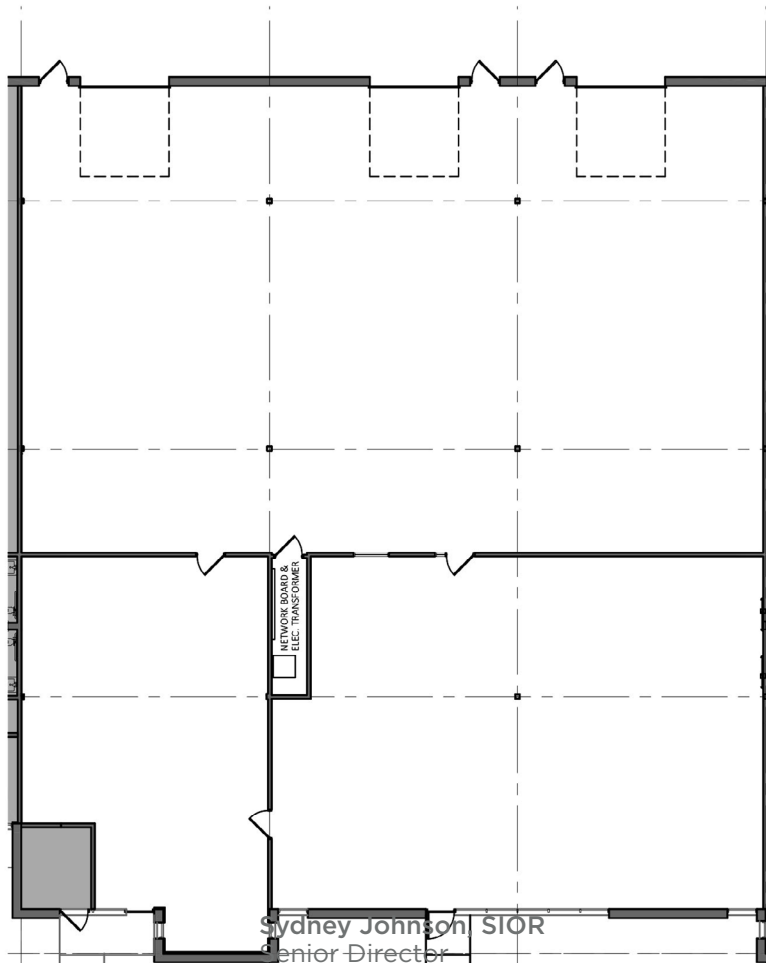
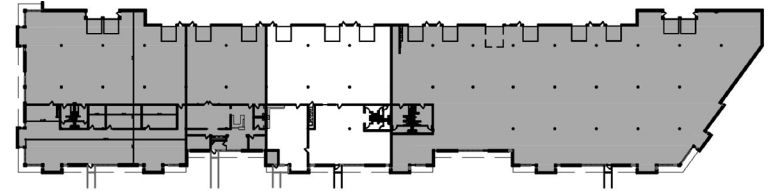
Plymouth Business Center

3900 Annapolis Lane North, Plymouth, MN



FOR LEASE

Suite 300



Dave Paradise
Senior Director
+1 952 893 8226
dave.paradise@cushwake.com

Sydney Johnson, SIOR
Senior Director
+1 952 893 8840
sydney.johnson@cushwake.com

AVAILABLE SUITE 300

OFFICE	=	3,452 S.F.
WAREHOUSE	=	4,690 S.F.
TOTAL	=	8,142 S.F.

Cushman & Wakefield
3500 American Blvd W Suite 200
Minneapolis, MN 55431
cushmanwakefield.com

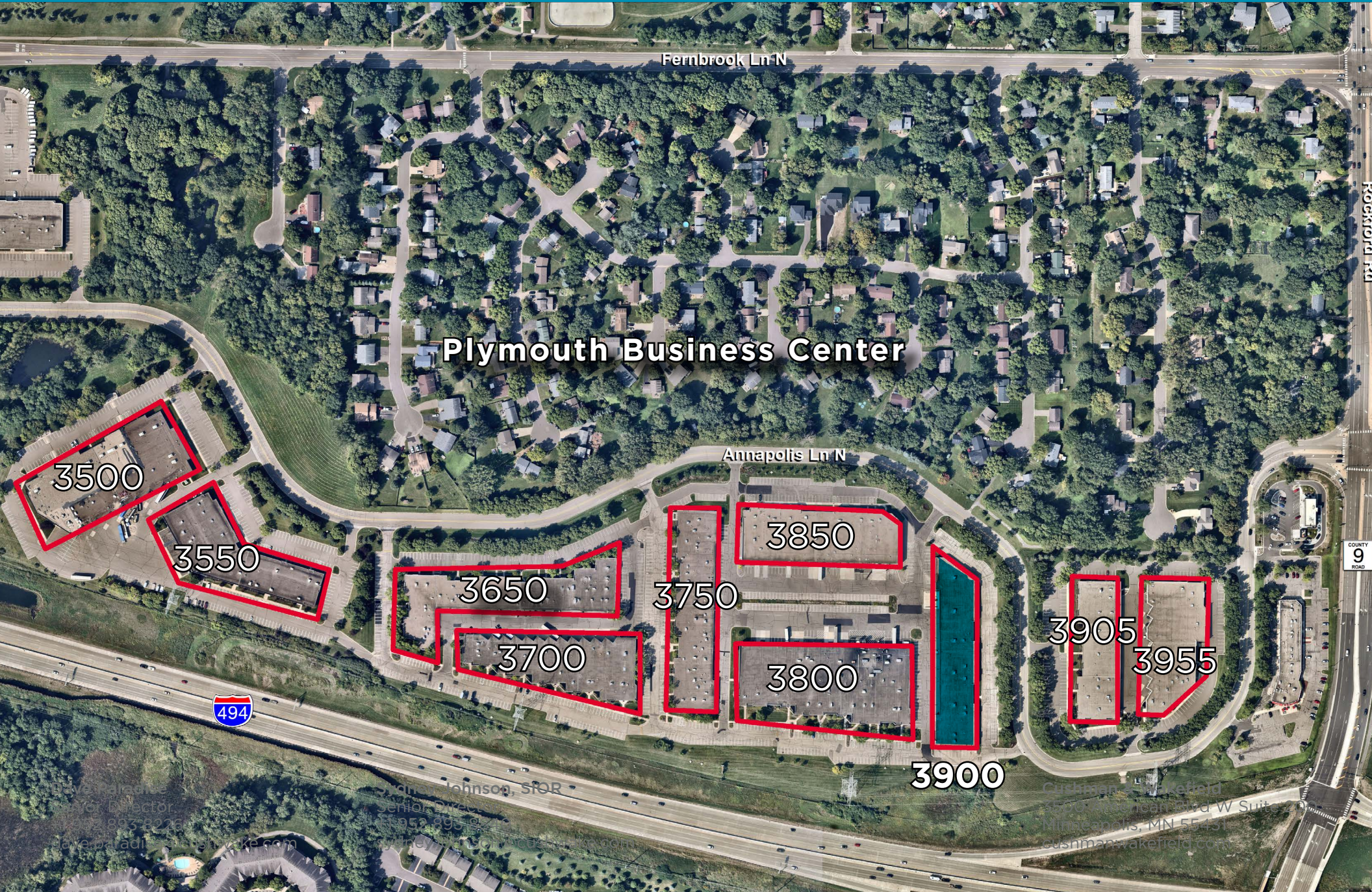


Plymouth Business Center

3900 Annapolis Lane North, Plymouth, MN



FOR LEASE



Plymouth Business Center

3500

3550

3650

3700

3750

3850

3800

3900

3905

3955

Fernbrook Ln N

Annapolis Ln N

Rockford Rd

COUNTY 9 ROAD

Jaye Paradise
Mgr. Director
612.893.8226
jaye.paradi@cw.com

John Johnson, SFOR
Senior Director
612.893.8950
john.johnson@cw.com

Cushman & Wakefield
1000 Hennepin Ave, W Suite
Minneapolis, MN 55431
cushmanwakefield.com