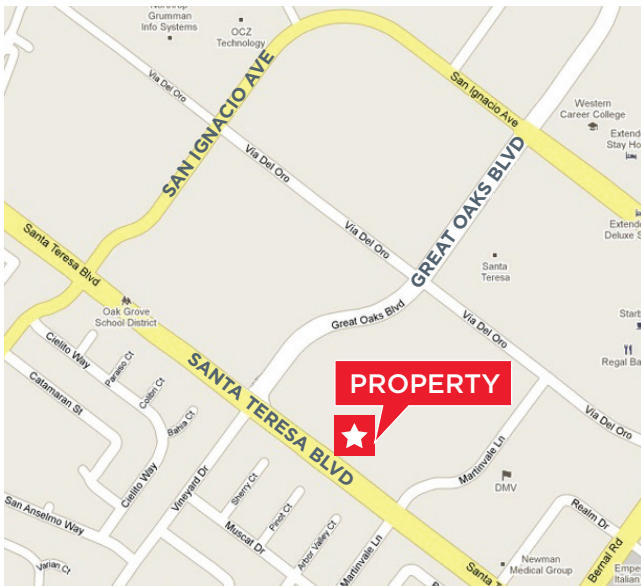


FOR LEASE

# 6862 Santa Teresa Boulevard

San Jose, California



## PROPERTY HIGHLIGHTS:

- Three (3) Private Offices
- One (1) Large & One (1) Small Conference Room
- Small Kitchen/Coffee Bar Area
- Private Restroom
- High Bay Warehouse with Grade Level Loading Door
- 100% Heating Ventilation & Air Conditioning
- 200 Amps @ 120/208 Volt, 3-Phase
- High Identity Building on Santa Teresa Boulevard
- \$1.80/SF NNN + (NNN's = Estimated \$0.37/SF)
- **PLEASE CONTACT LISTING BROKER TO TOUR**
- **DO NOT DISTURB TENANT**

**±3,815 SF  
R&D Flex Space**

For more information, contact:

**Kevin Sweatt**  
**Senior Director**  
P +1 408 436 3644  
kevin.sweatt@cushwake.com

LIC #00966186

300 Santana Row, Fifth Floor  
San Jose, CA 95128

T +1 408 615 3400

[www.cushmanwakefield.com](http://www.cushmanwakefield.com)

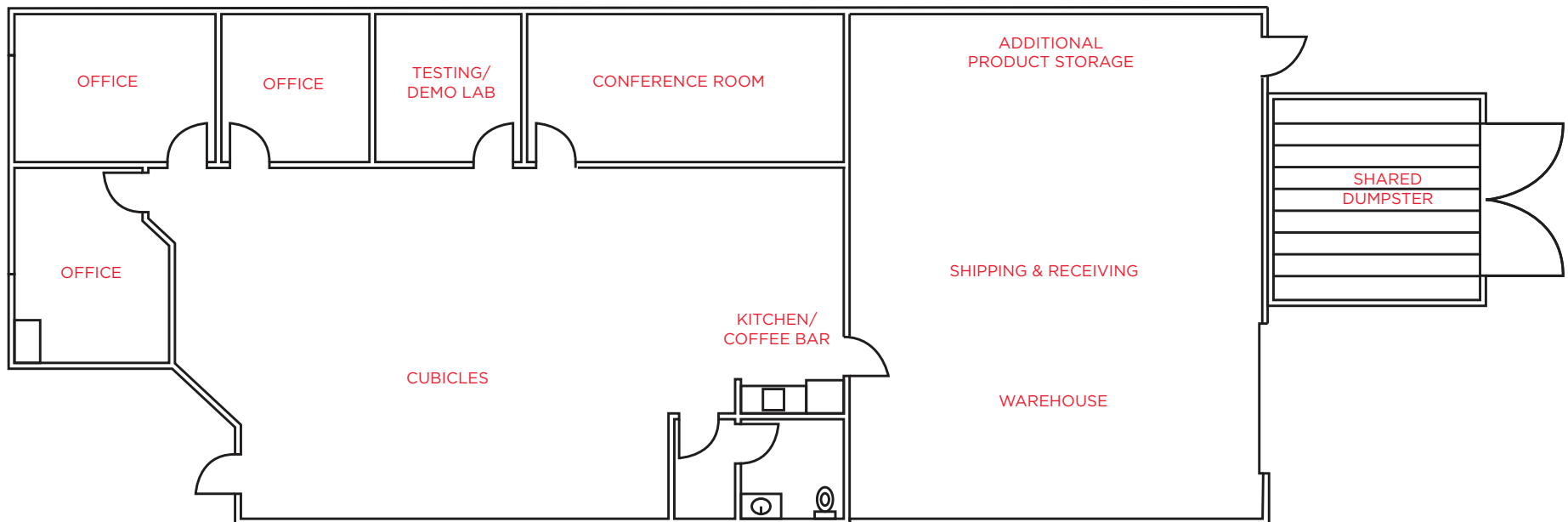
FOR LEASE

# 6862 Santa Teresa Boulevard

San Jose, California



## FLOOR PLAN: ±3,815 SF



NOT TO SCALE

For more information, please contact:

**Kevin Sweatt**  
**Senior Director**  
P +1 408 436 3644  
kevin.sweatt@cushwake.com  
LIC #00966186

300 Santana Row, Fifth Floor  
San Jose, CA 95128  
T +1 408 615 3400  
[www.cushmanwakefield.com](http://www.cushmanwakefield.com)



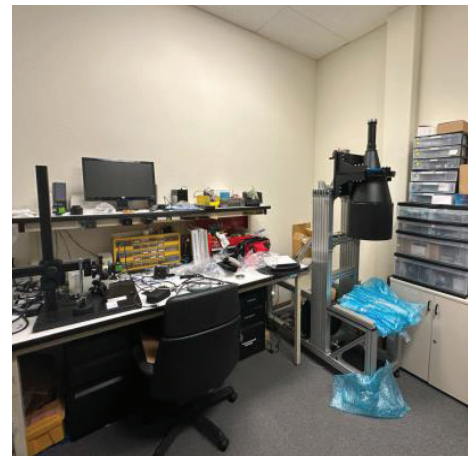
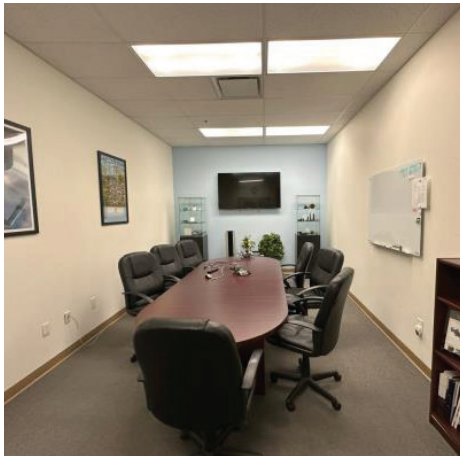
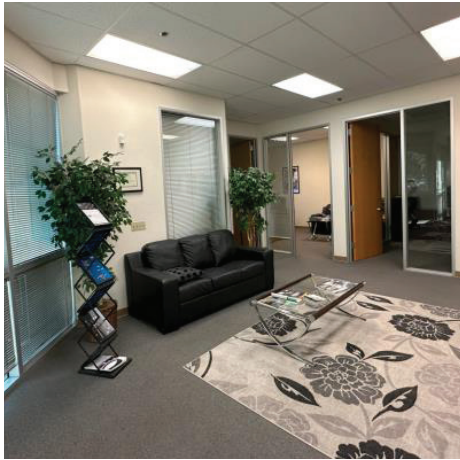
FOR LEASE

# 6862 Santa Teresa Boulevard

San Jose, California



## INTERIOR PICTURES:



For more information, please contact:

**Kevin Sweatt**  
**Senior Director**  
P +1 408 436 3644  
kevin.sweatt@cushwake.com  
LIC #00966186

300 Santana Row, Fifth Floor  
San Jose, CA 95128  
T +1 408 615 3400  
[www.cushmanwakefield.com](http://www.cushmanwakefield.com)

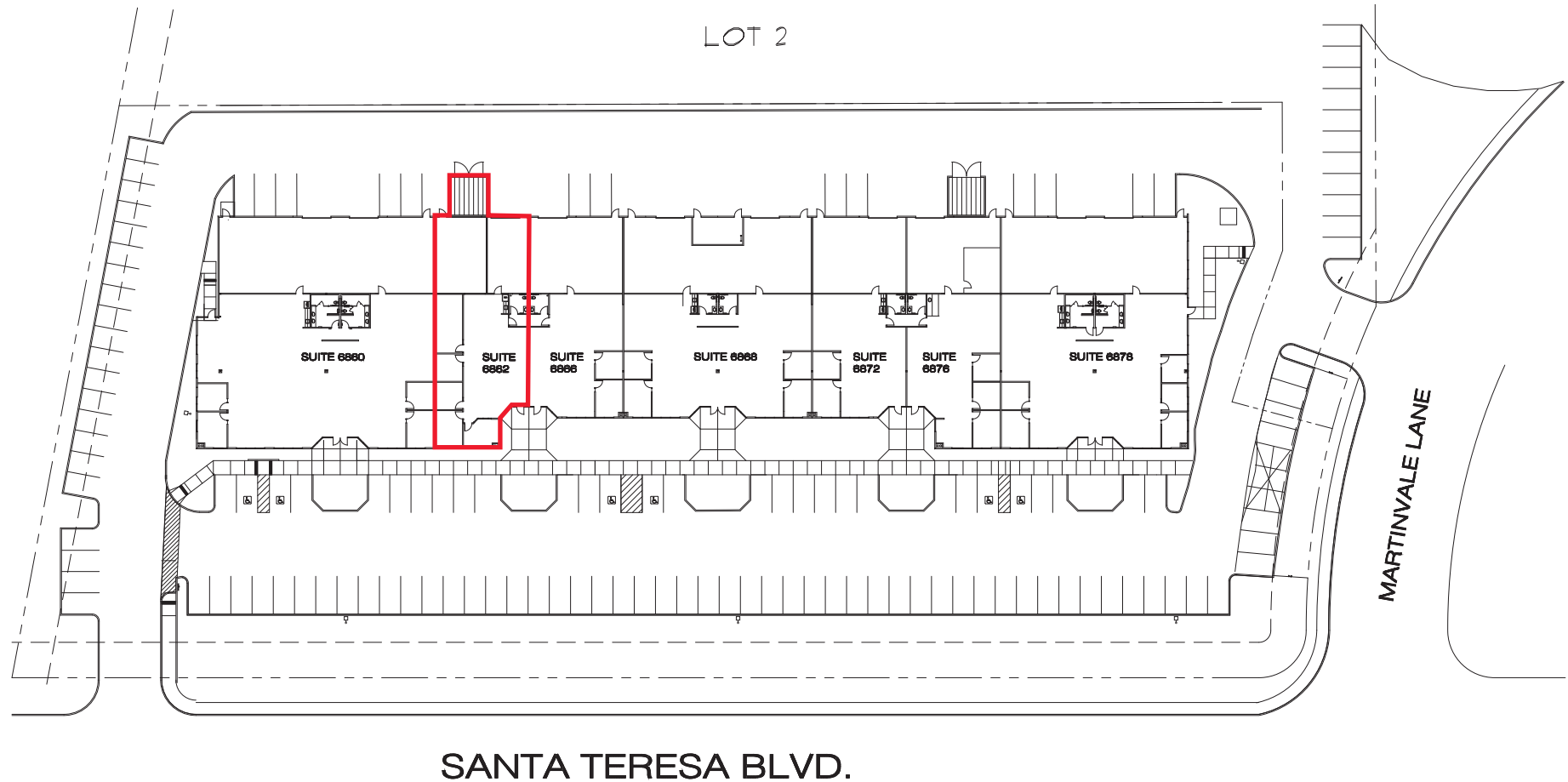
FOR LEASE

# 6862 Santa Teresa Boulevard

San Jose, California



## SITE PLAN:



For more information, please contact:

**Kevin Sweatt**  
**Senior Director**  
P +1 408 436 3644  
kevin.sweatt@cushwake.com  
LIC #00966186

300 Santana Row, Fifth Floor  
San Jose, CA 95128  
T +1 408 615 3400  
[www.cushmanwakefield.com](http://www.cushmanwakefield.com)

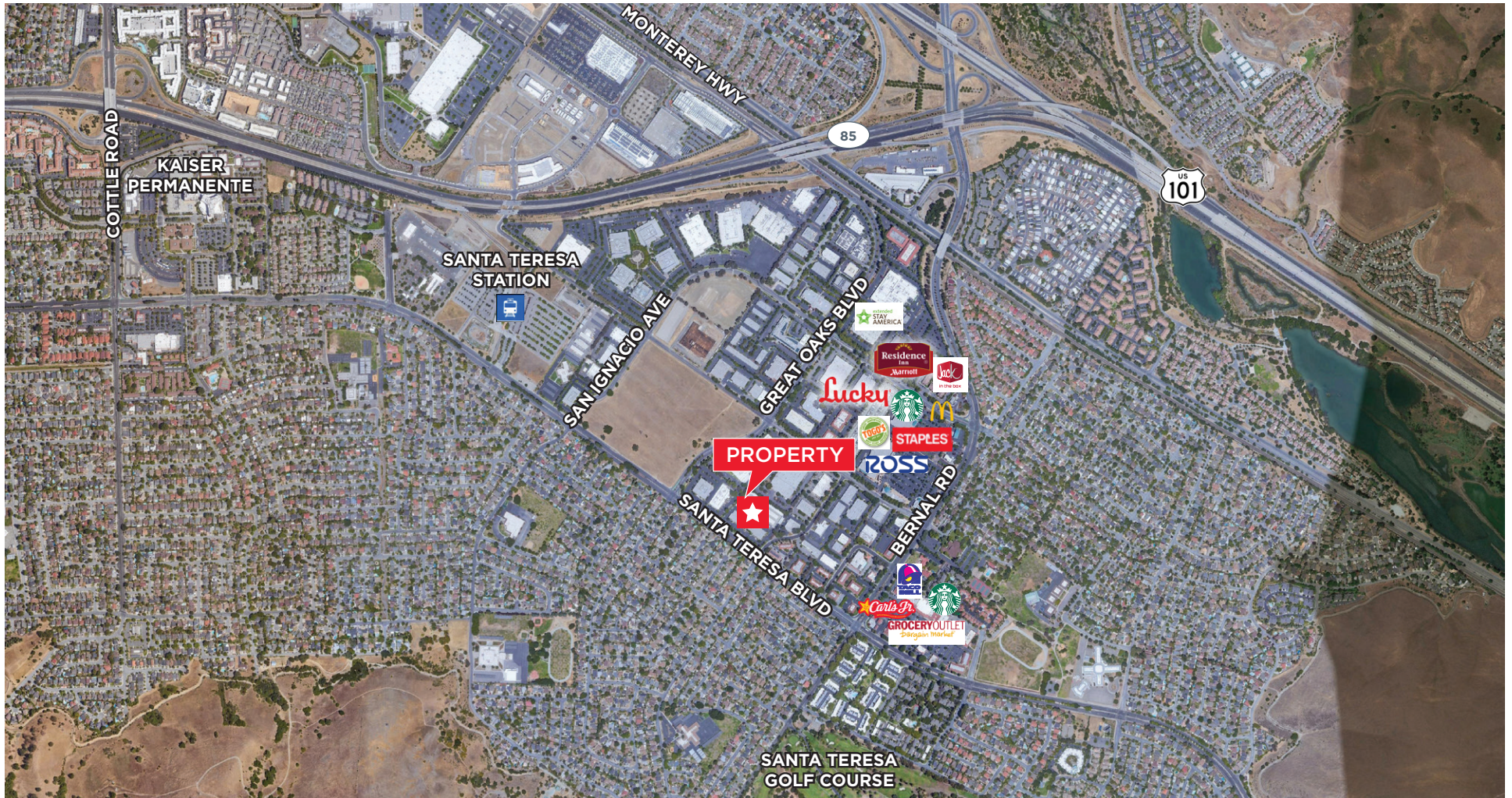
©2024 Cushman & Wakefield. All rights reserved. The information contained in this communication is strictly confidential. This information has been obtained from sources believed to be reliable but has not been verified. NO WARRANTY OR REPRESENTATION, EXPRESS OR IMPLIED, IS MADE AS TO THE CONDITION OF THE PROPERTY (OR PROPERTIES) REFERENCED HEREIN OR AS TO THE ACCURACY OR COMPLETENESS OF THE INFORMATION CONTAINED HEREIN, AND SAME IS SUBMITTED SUBJECT TO ERRORS, OMISSIONS, CHANGE OF PRICE, RENTAL OR OTHER CONDITIONS, WITHDRAWAL WITHOUT NOTICE, AND TO ANY SPECIAL LISTING CONDITIONS IMPOSED BY THE PROPERTY OWNER(S). ANY PROJECTIONS, OPINIONS OR ESTIMATES ARE SUBJECT TO UNCERTAINTY AND DO NOT SIGNIFY CURRENT OR FUTURE PROPERTY PERFORMANCE.



FOR LEASE

# 6862 Santa Teresa Boulevard

San Jose, California



For more information, please contact:

**Kevin Sweatt**  
**Senior Director**  
P +1 408 436 3644  
kevin.sweatt@cushwake.com  
LIC #00966186

300 Santana Row, Fifth Floor  
San Jose, CA 95128  
T +1 408 615 3400  
[www.cushmanwakefield.com](http://www.cushmanwakefield.com)

©2024 Cushman & Wakefield. All rights reserved. The information contained in this communication is strictly confidential. This information has been obtained from sources believed to be reliable but has not been verified. NO WARRANTY OR REPRESENTATION, EXPRESS OR IMPLIED, IS MADE AS TO THE CONDITION OF THE PROPERTY (OR PROPERTIES) REFERENCED HEREIN OR AS TO THE ACCURACY OR COMPLETENESS OF THE INFORMATION CONTAINED HEREIN, AND SAME IS SUBMITTED SUBJECT TO ERRORS, OMISSIONS, CHANGE OF PRICE, RENTAL OR OTHER CONDITIONS, WITHDRAWAL WITHOUT NOTICE, AND TO ANY SPECIAL LISTING CONDITIONS IMPOSED BY THE PROPERTY OWNER(S). ANY PROJECTIONS, OPINIONS OR ESTIMATES ARE SUBJECT TO UNCERTAINTY AND DO NOT SIGNIFY CURRENT OR FUTURE PROPERTY PERFORMANCE.