

FOR LEASE

2219 Edgewood Ave S

St. Louis Park, MN



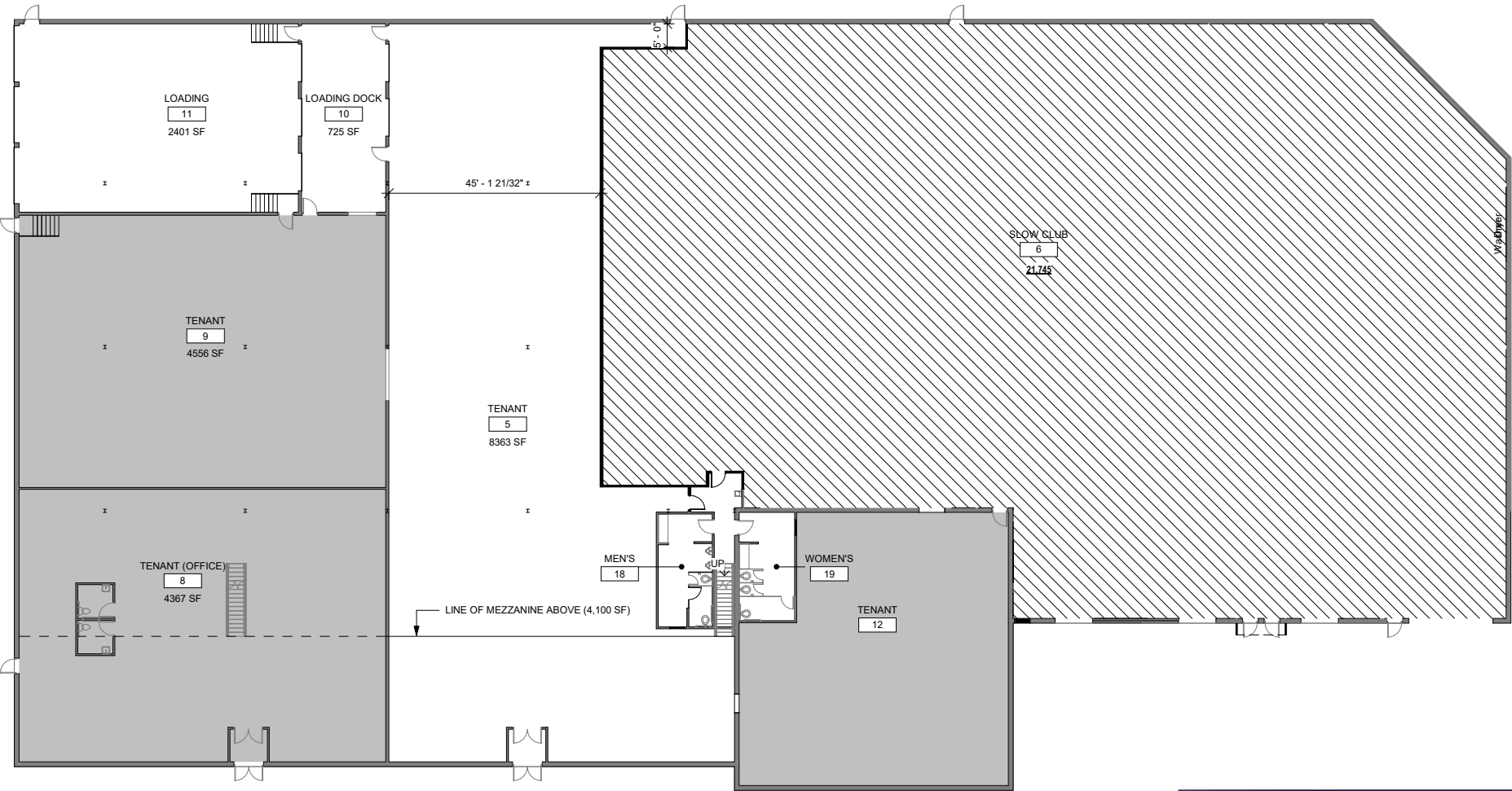
PROPERTY FEATURES

- CENTRALLY LOCATED
- EXCELLENT ACCESS TO HWY 100 & I-394
- AMPLE RETAIL AND AMENITIES NEARBY



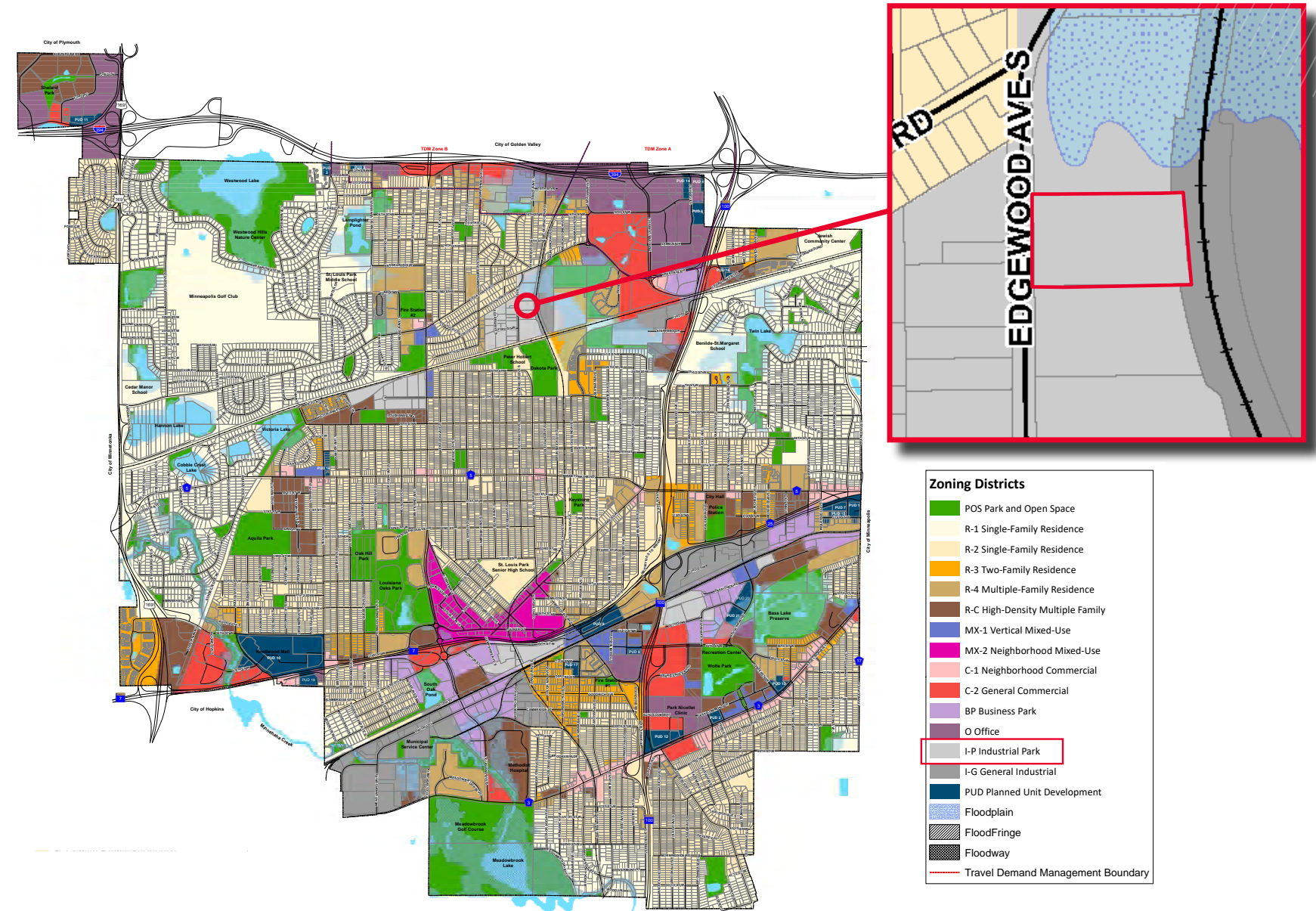
Lease Rate	Negotiable
Available SF	9,000 SF
Total Land	2.09 Acres
Year Built	1980
Clear Height	18'
Loading	3 Docks
Parking	84 Stalls
Power	Heavy Power
HVAC	Fully Air-Conditioned
Sprinklered	Fully sprinklered
Zoning	I-P Industrial Park
2025 Property Taxes	\$154,006.36 (\$3.08 PSF)
2025 Cam Estimate	\$1.50 PSF

FLOOR PLAN

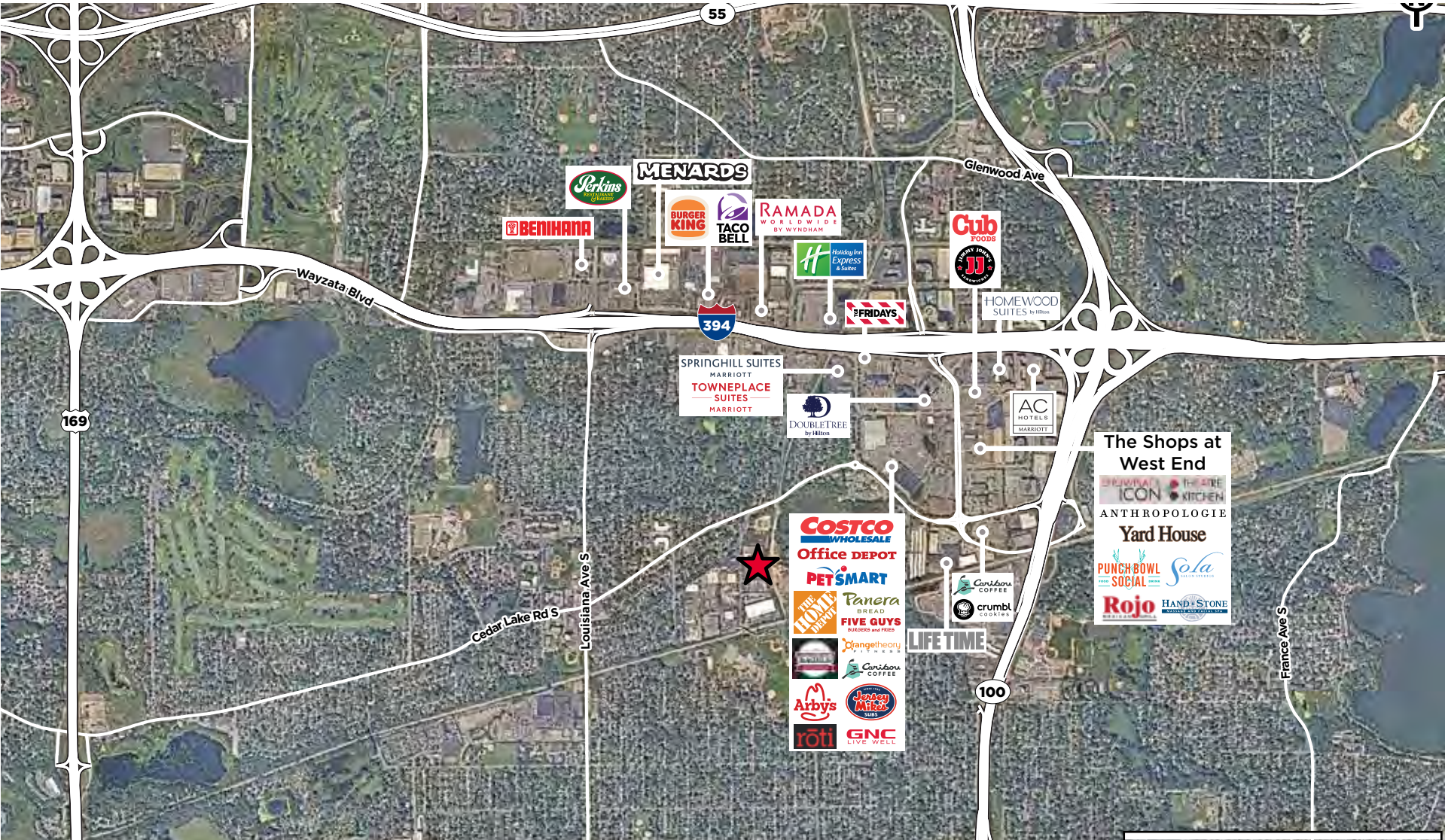


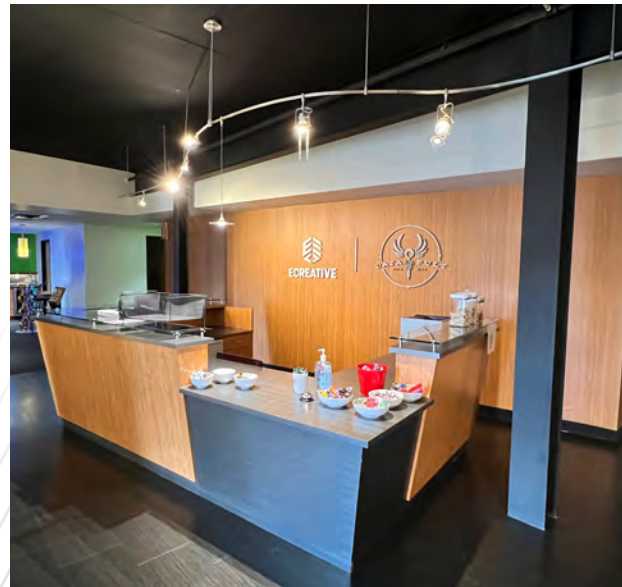
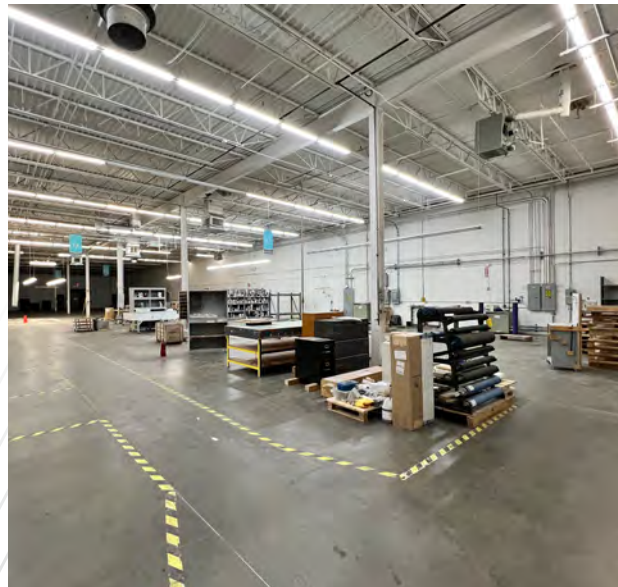
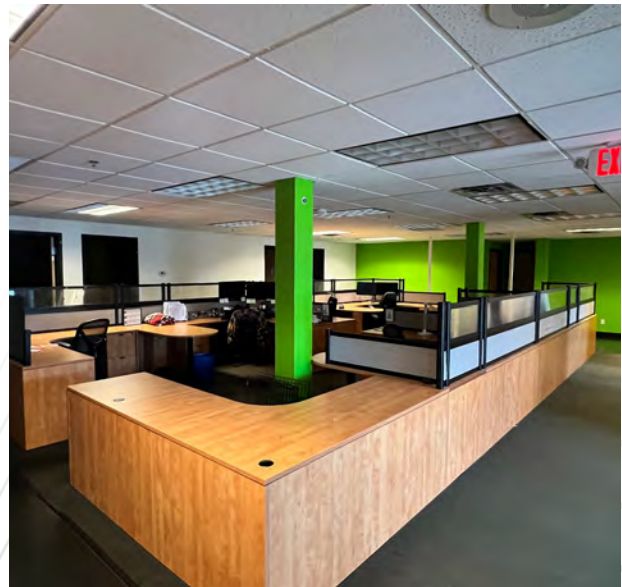
2219 EDGEWOOD AVE S
**9,000 SF
AVAILABLE**

ZONING

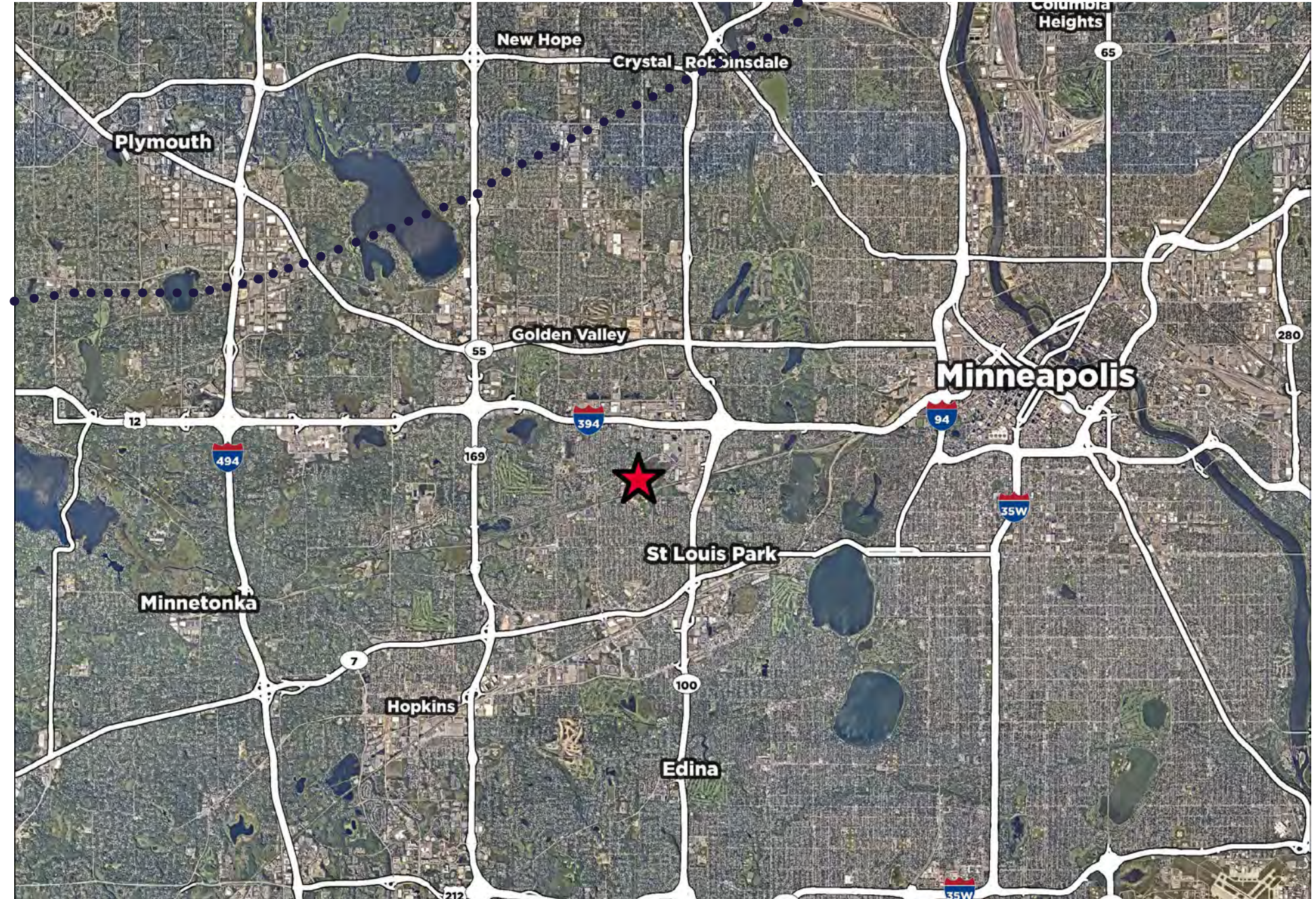


AERIAL AMENITIES





LOCAL AMENITIES





CONTACT

HUDSON BROTHEN

Executive Director
+1 952 893 8261
HUDSON.BROTHEN@CUSHWAKE.COM

JAKE KELLY

Senior Associate
+1 952 465 3303
JAKE.KELLY@CUSHWAKE.COM

KRIS SMELTZER

Executive Managing Director
+1 952 837 8575
KRIS.SMELTZER@CUSHWAKE.COM