



CUSHMAN &
WAKEFIELD

LUND
COMPANY

ARBOR BUILDING

11605 ARBOR STREET
OMAHA, NE 68144

Two available office spaces

161 SF - \$800/month full service

214 SF - \$800/month full service





PROPERTY DESCRIPTION

Located just off West Center Road, these executive suites offer a convenient and accessible location for professionals. The space includes a shared conference room, break room, waiting area, storage, and reception area. Each private office space is quiet, spacious, and ideal for attorneys, independent contractors, or small business professionals looking for professional space.

Rental Rate:	\$800/Month FS
Total Building Size:	9,312 SF
Total Available:	375 SF
Number of Spaces:	Two (2)
Minimum Divisible:	161 SF
Zoning:	LO - Limited Office
Parking Ratio:	4.25

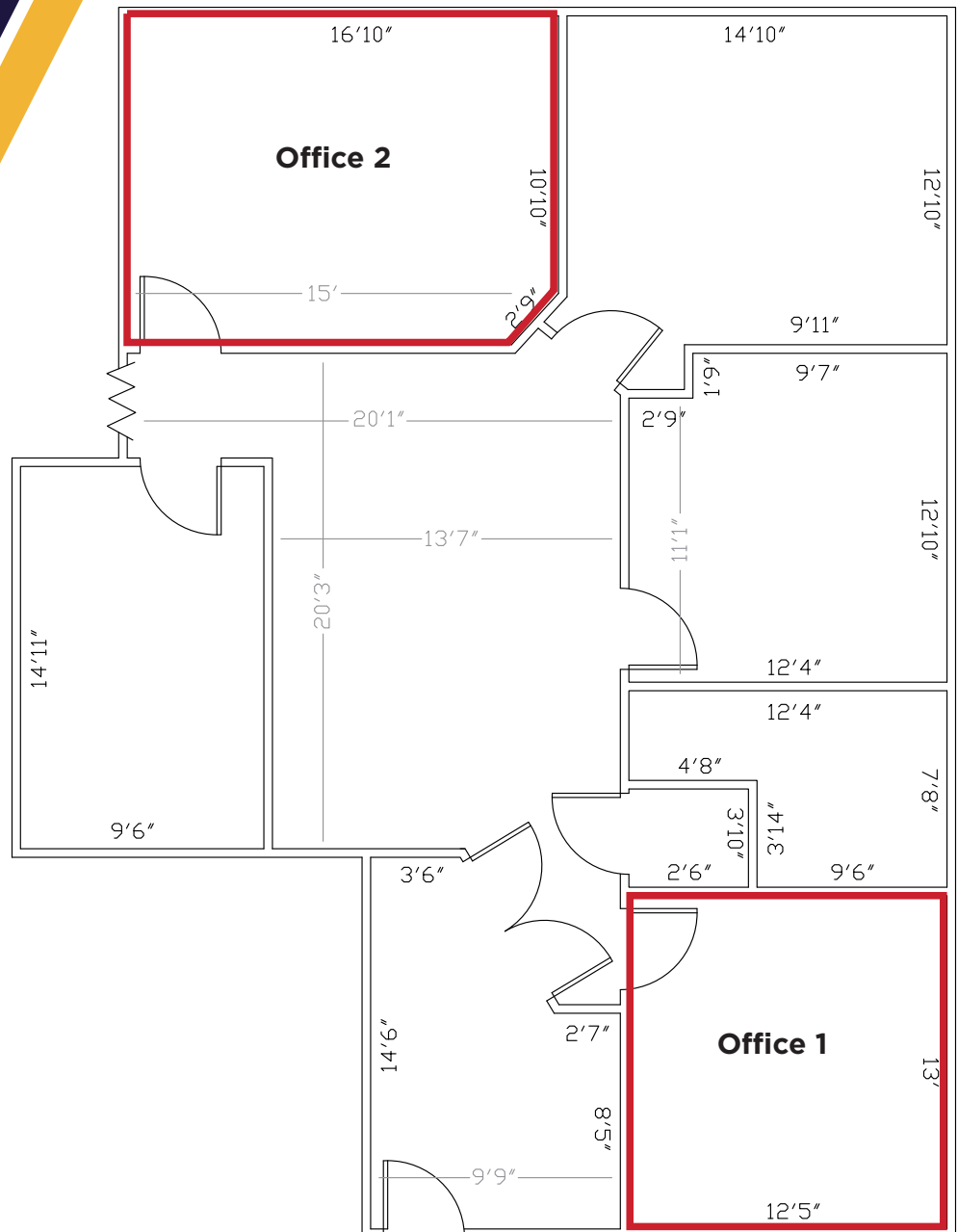
FLOOR PLAN

Office 1 - 161 SF

- \$800/MO Full Service

Office 2 - 214 SF

- \$800/MO Full Service



** Floor plan measurements are approximate and are for illustration purposes only.



For more information,
please contact:

Martin Patzner, SIOR®, CCIM, CPM®, RPA
Vice President, Office Specialist
+1 402 548 4033
martin.patzner@lundco.com

Tyler Cullor
Associate
+1 402 548 4025
tyler.cullor@lundco.com

450 Regency Parkway, Suite 200
Omaha, NE 68114
+1 402 393 8811
lundco.com

Independently Owned and Operated / A Member of the Cushman & Wakefield Alliance

©2025 Cushman & Wakefield. All rights reserved. The information contained in this communication is strictly confidential. This information has been obtained from sources believed to be reliable but has not been verified. NO WARRANTY OR REPRESENTATION, EXPRESS OR IMPLIED, IS MADE AS TO THE CONDITION OF THE PROPERTY (OR PROPERTIES) REFERENCED HEREIN OR AS TO THE ACCURACY OR COMPLETENESS OF THE INFORMATION CONTAINED HEREIN, AND SAME IS SUBMITTED SUBJECT TO ERRORS, OMISSIONS, CHANGE OF PRICE, RENTAL OR OTHER CONDITIONS, WITHDRAWAL WITHOUT NOTICE, AND TO ANY SPECIAL LISTING CONDITIONS IMPOSED BY THE PROPERTY OWNER(S). ANY PROJECTIONS, OPINIONS OR ESTIMATES ARE SUBJECT TO UNCERTAINTY AND DO NOT SIGNIFY CURRENT OR FUTURE PROPERTY PERFORMANCE.



**CUSHMAN &
WAKEFIELD**

LUND
COMPANY