

# 1900 - 2000 EMBARCADERO OAKLAND, CA



**DAVID ENGLERT**  
Senior Director | 510.267.6037 | david.englert@cushwake.com | LIC #01291709

**BARRY COHN**  
Managing Director | 510.267.6003 | barry.cohn@cushwake.com | LIC #01007603





# 1900 - 2000

## EMBARCADERO, OAKLAND

### BUILDING HIGHLIGHTS:

- » Abundant Free Parking
- » Free Commuter Shuttle to Lake Merritt BART
- » Estuary Views
- » Adjacent to Embarcadero Cove Marina
- » On-Site Security and Property Management
- » Elevator Served
- » Great Window Line
- » Easy Access to Highway 880
- » Suburban/Waterfront Setting
- » Call for Pricing

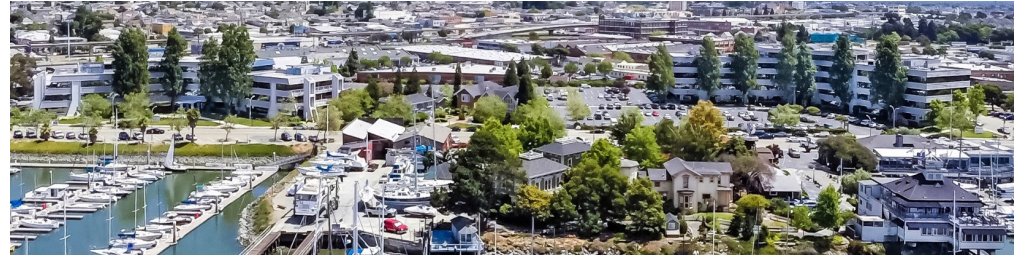
### VACANT SUITES

Bldg	Suite	RSF	Details
1900	111	2,236	Former Deli/Cafe Space
1900	303	5,194	Divisible, 12 Offices, Conference Room, Kitchenette
2000	204	5,594	Great Window Line and Views, Mostly Open Plan, Conference Room

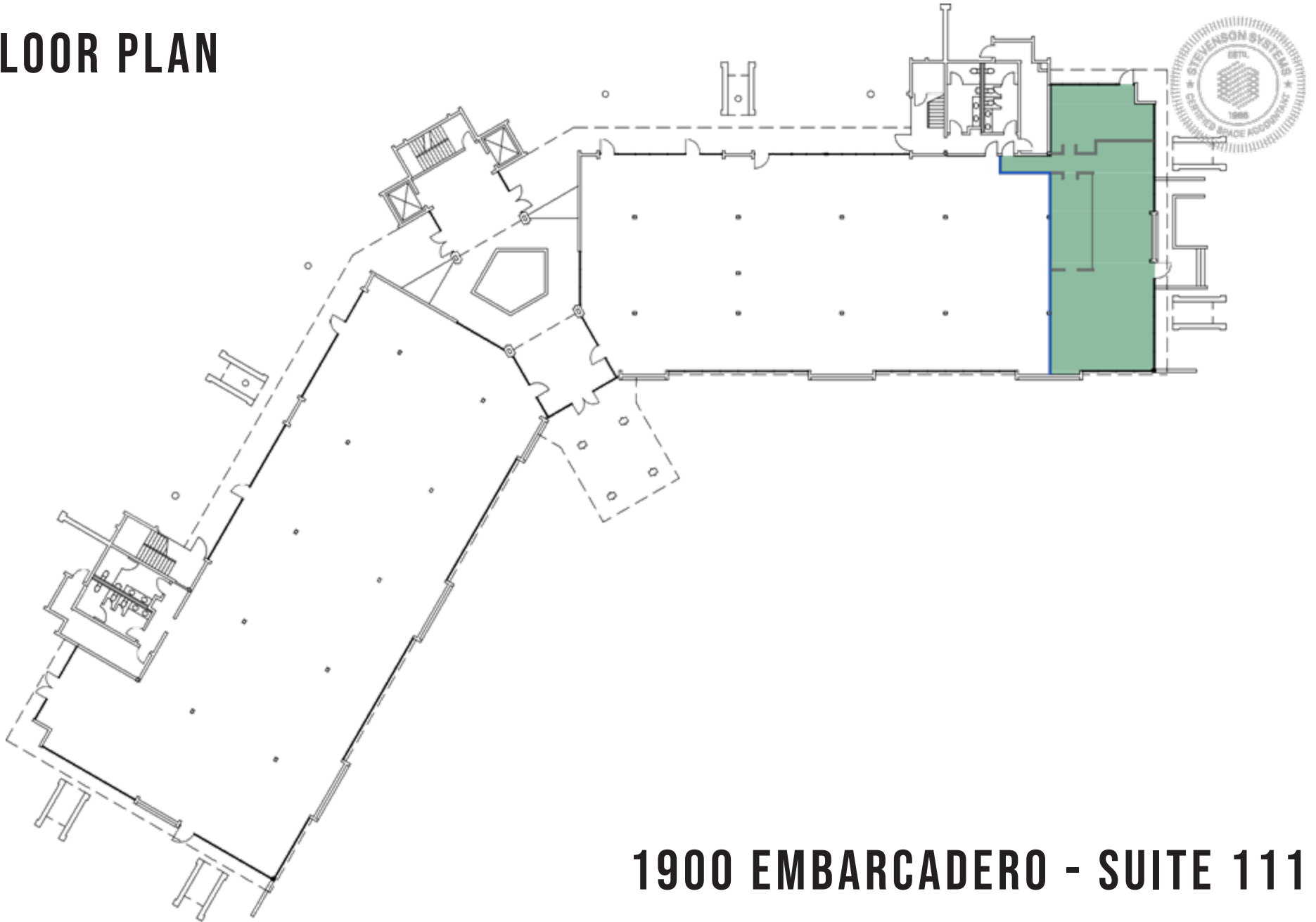


# 1900 - 2000

EMBARCADERO, OAKLAND



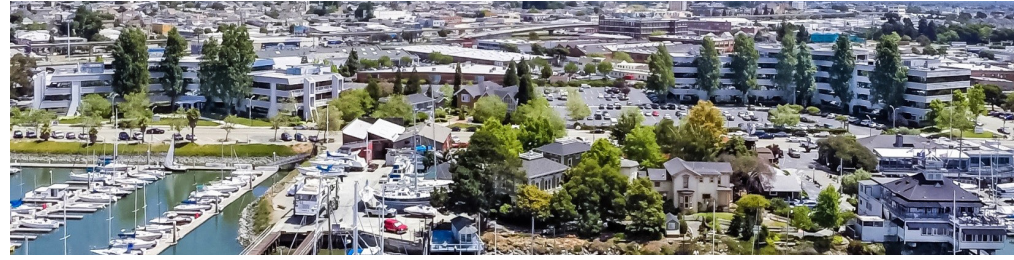
## FLOOR PLAN



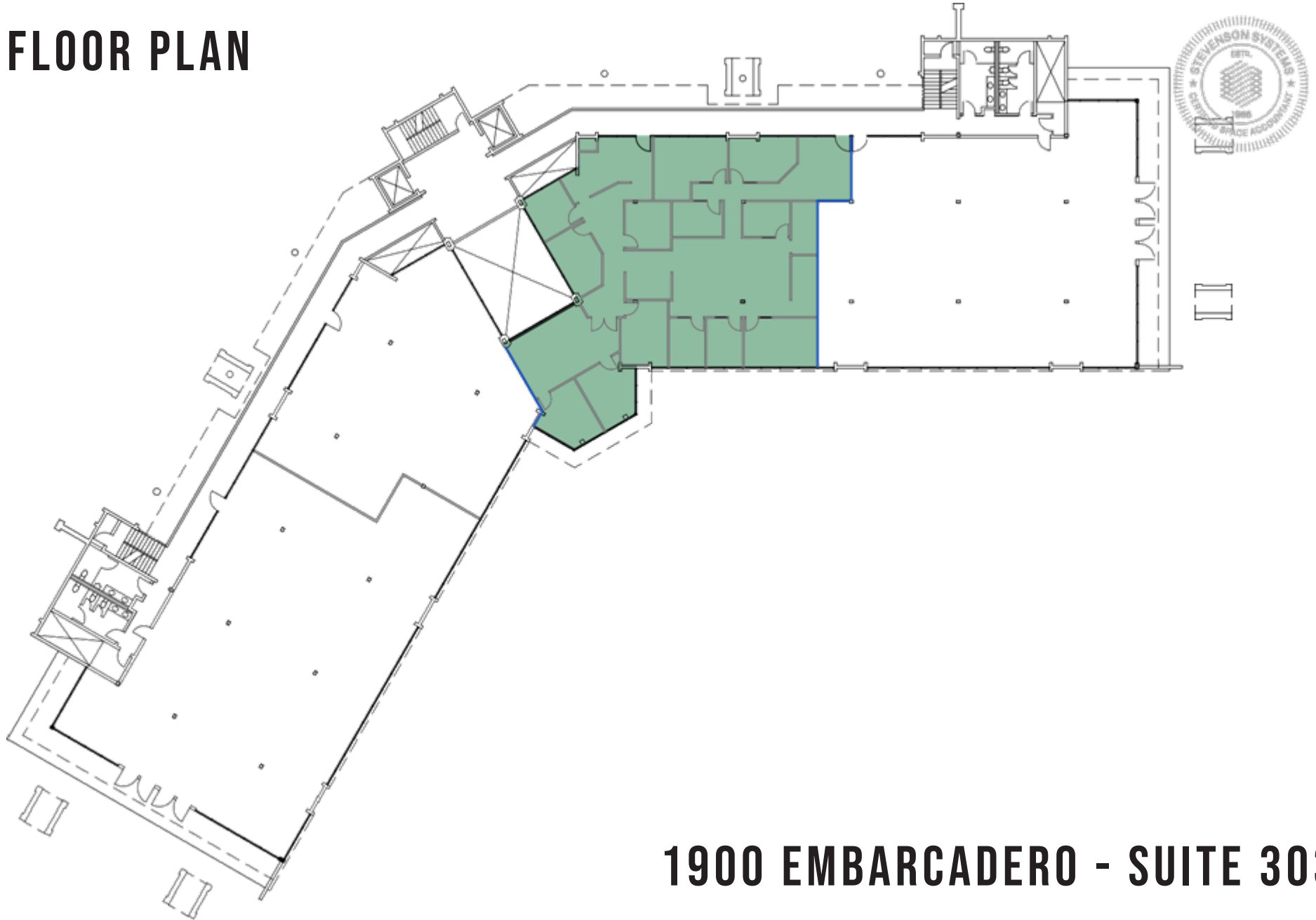
**1900 EMBARCADERO - SUITE 111**



**1900 - 2000**  
**EMBARCADERO, OAKLAND**



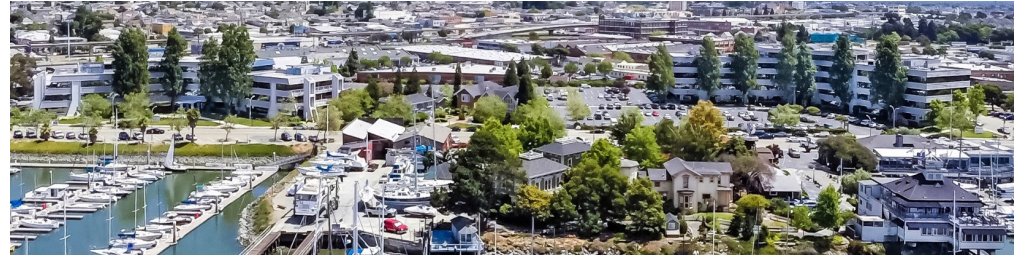
## FLOOR PLAN



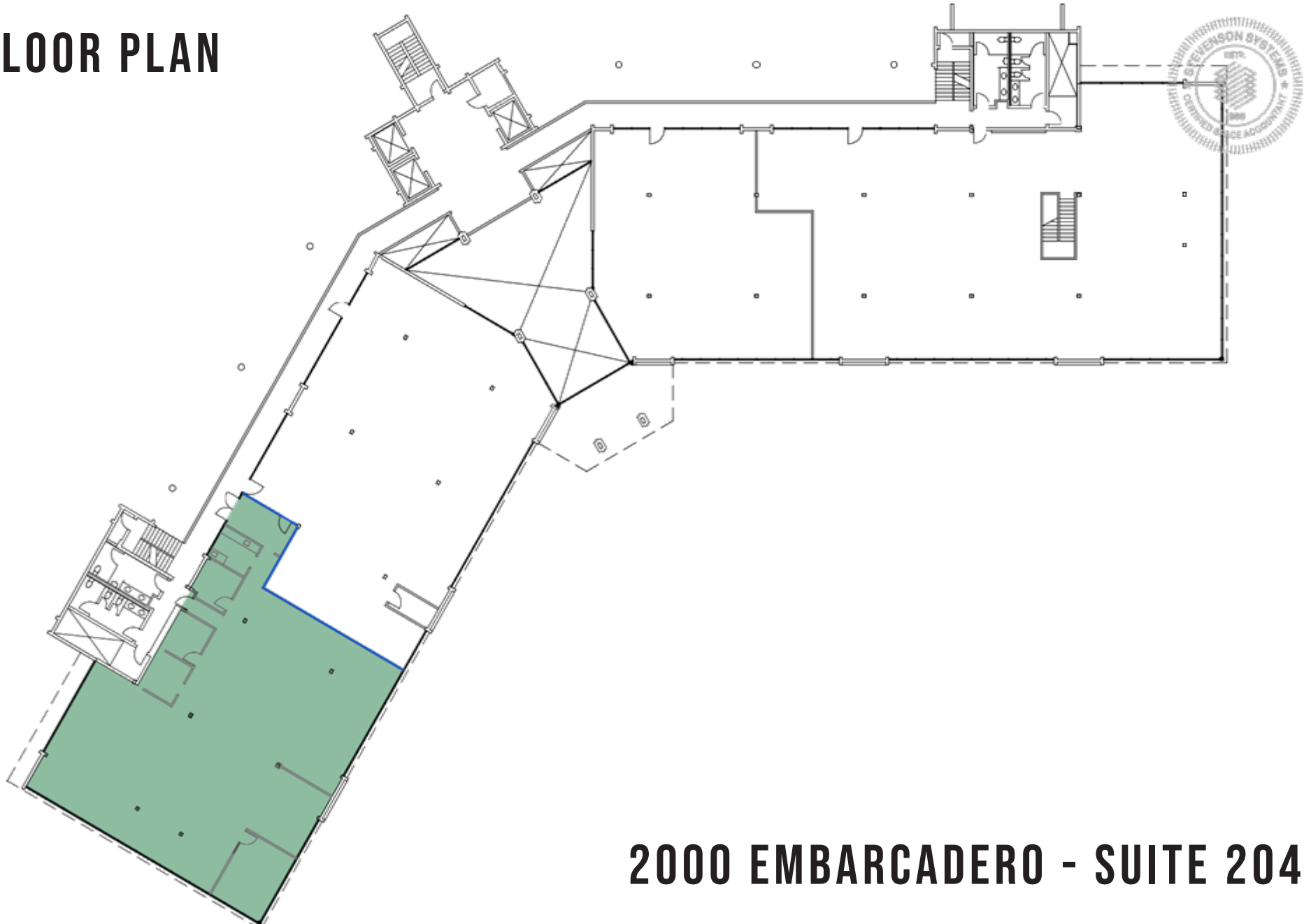
**1900 EMBARCADERO - SUITE 303**

# 1900 - 2000

EMBARCADERO, OAKLAND



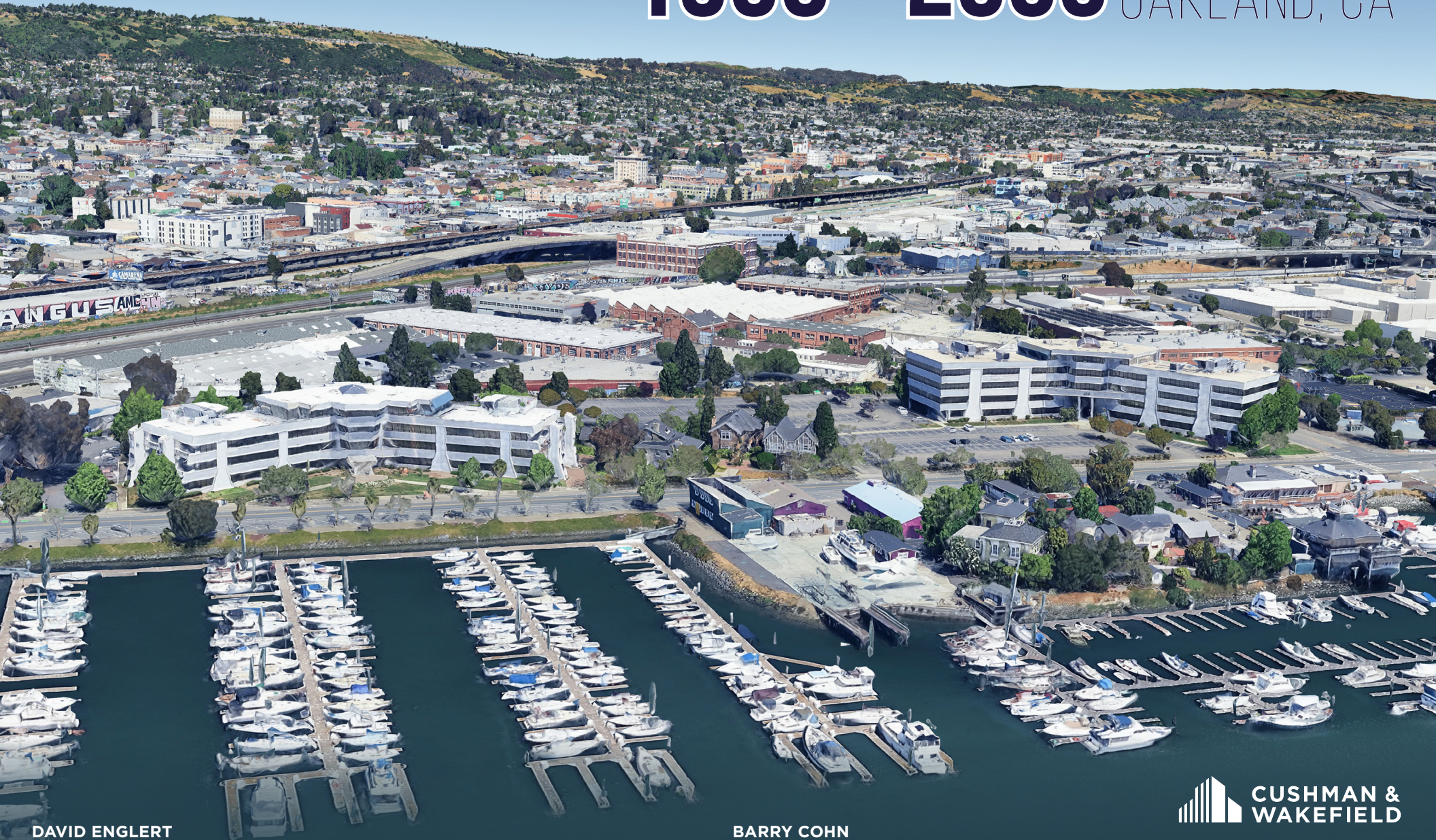
## FLOOR PLAN



2000 EMBARCADERO - SUITE 204



# 1900 - 2000 EMBARCADERO OAKLAND, CA



**DAVID ENGLERT**

Senior Director | 510.267.6037 | [david.englert@cushwake.com](mailto:david.englert@cushwake.com) | LIC #01291709

**BARRY COHN**

Managing Director | 510.267.6003 | [barry.cohn@cushwake.com](mailto:barry.cohn@cushwake.com) | LIC #01007603

