

**29  
25** **SHAWNEE**  
INDUSTRIAL WAY

SUWANEE, GEORGIA

FOR SUBLEASE  
36,075 SF





# // PROPERTY FEATURES



26' CLEAR HEIGHT



+/- 3,200 SF OFFICE SPACE



6 DOCKS / 1 (12'X14') DRIVE IN



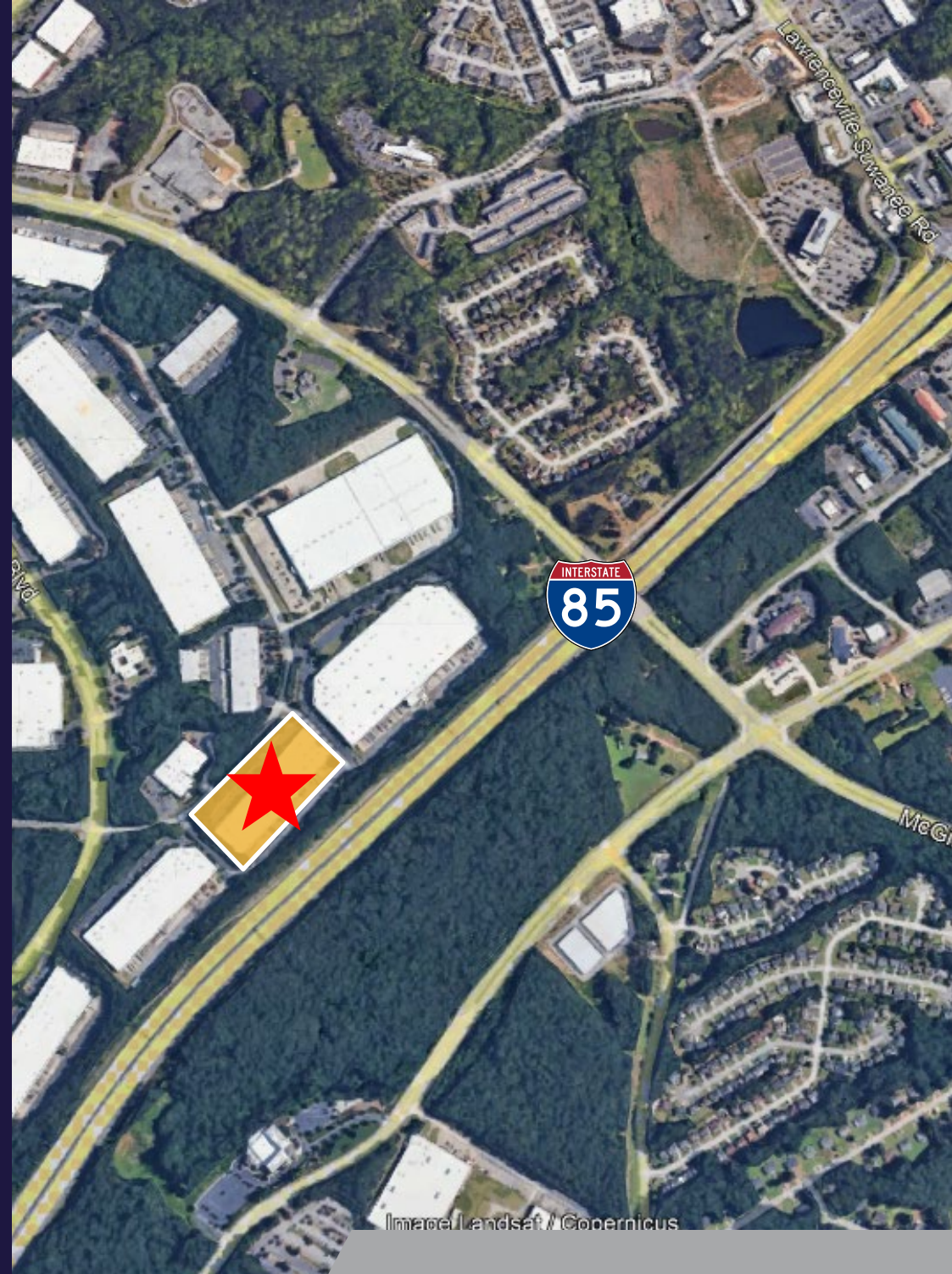
50' X 50' COLUMN SPACING



2.4 MILES TO I-85

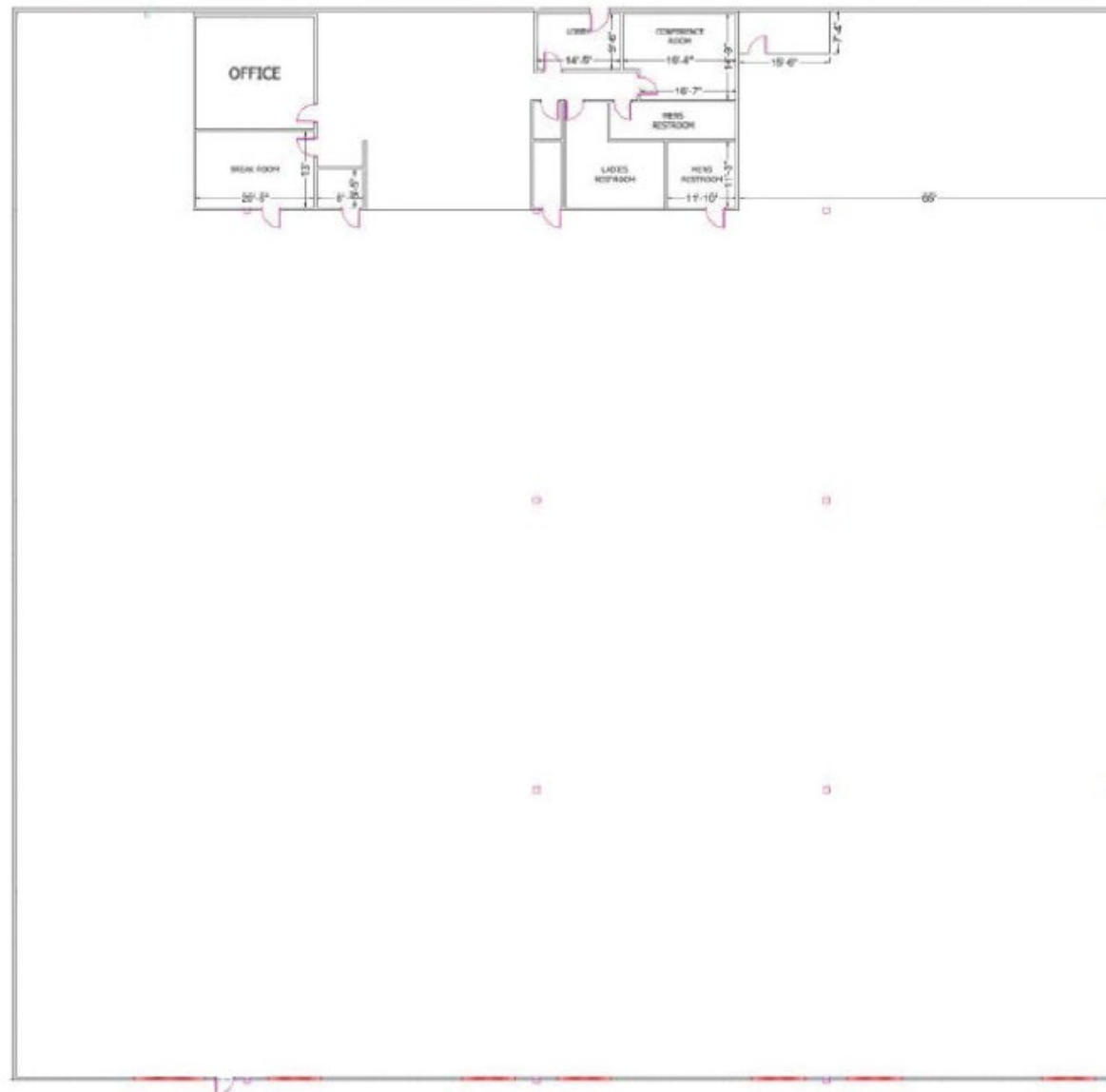


TERM THROUGH MARCH 31, 2028



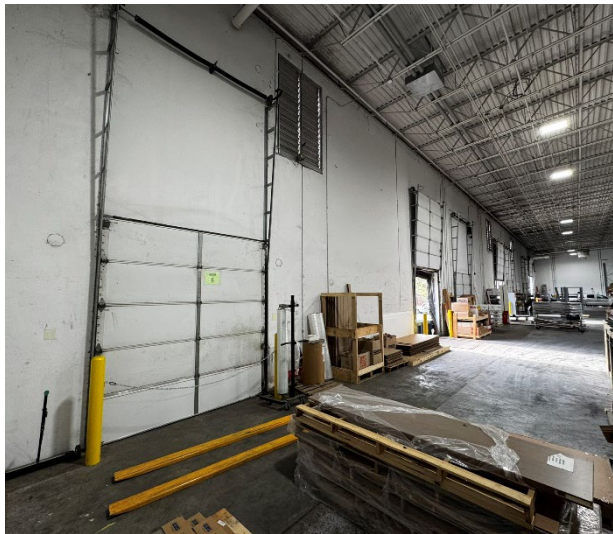
**2925 SHAWNEE INDUSTRIAL WAY**  
Suwanee, GA

# // FLOOR PLAN





# // GALLERY

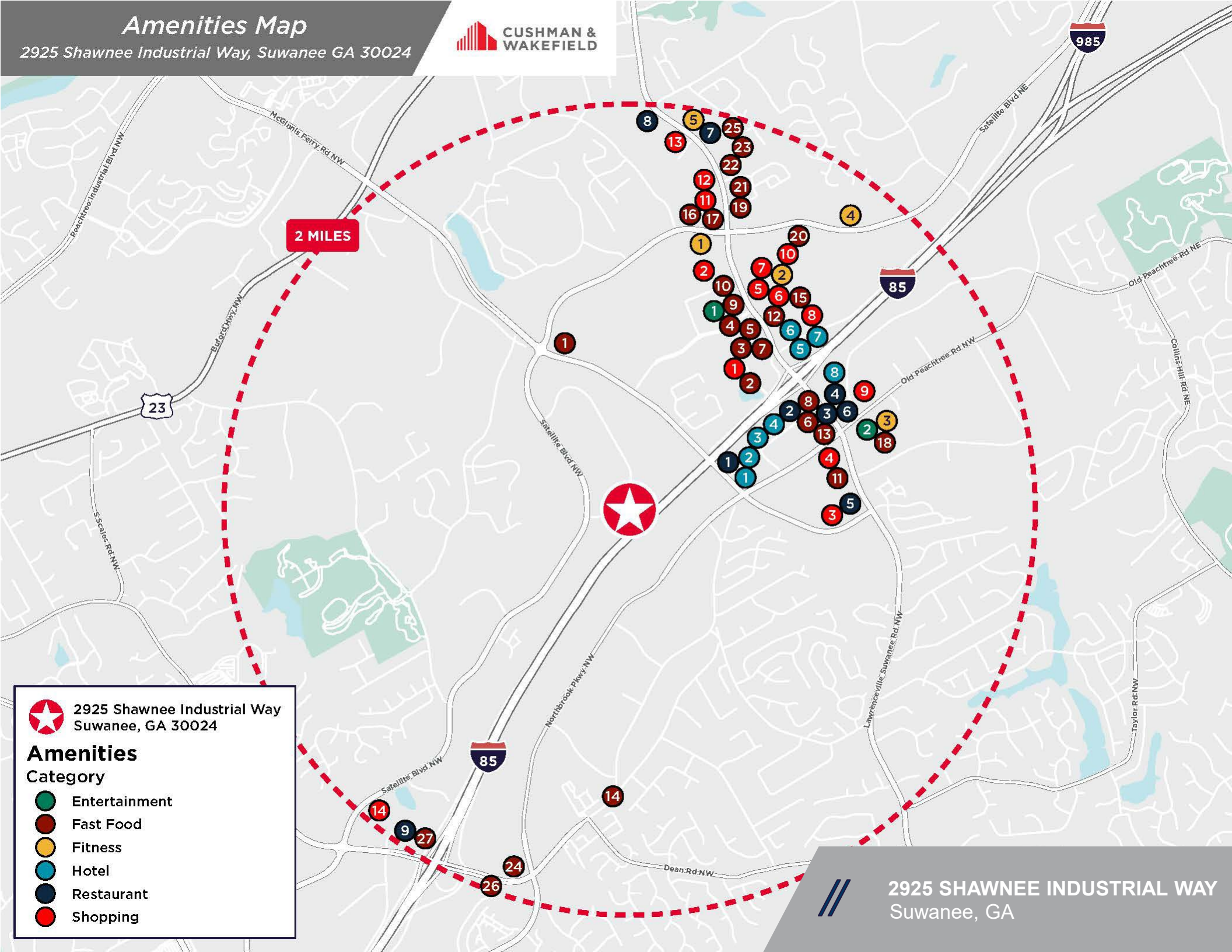


2925 SHAWNEE INDUSTRIAL WAY  
Suwanee, GA



# Amenities Map

2925 Shawnee Industrial Way, Suwanee GA 30024



2 MILES



2925 Shawnee Industrial Way  
Suwanee, GA 30024

## Amenities

### Category

- Entertainment
- Fast Food
- Fitness
- Hotel
- Restaurant
- Shopping



2925 SHAWNEE INDUSTRIAL WAY  
Suwanee, GA

# 29 25 SHAWNEE INDUSTRIAL WAY



## // CONTACT

JAMES PHILLPOTT, SIOR  
Executive Director  
+1 404 259 7130  
[james.phillpott@cushwake.com](mailto:james.phillpott@cushwake.com)

HELEN CAUTHEN  
Director  
+1 865 806 3561  
[helen.cauthen@cushwake.com](mailto:helen.cauthen@cushwake.com)

CONNOR LARKIN  
Director  
+1 404 683 3582  
[connor.larkin@cushwake.com](mailto:connor.larkin@cushwake.com)



©2020 Cushman & Wakefield. All rights reserved. The material in this presentation has been prepared solely for information purposes, and is strictly confidential. Any disclosure, use, copying or circulation of this presentation (or the information contained within it) is strictly prohibited, unless you have obtained Cushman & Wakefield's prior written consent. The views expressed in this presentation are the views of the author and do not necessarily reflect the views of Cushman & Wakefield. Neither this presentation nor any part of it shall form the basis of, or be relied upon in connection with any offer, or act as an inducement to enter into any contract or commitment whatsoever. NO REPRESENTATION OR WARRANTY IS GIVEN, EXPRESS OR IMPLIED, AS TO THE ACCURACY OF THE INFORMATION CONTAINED WITHIN THIS PRESENTATION, AND CUSHMAN & WAKEFIELD IS UNDER NO OBLIGATION TO SUBSEQUENTLY CORRECT IT IN THE EVENT OF ERRORS.