

14215

MEAD ST., UNIT A

LONGMONT, COLORADO 80504

BUILDING 2



AVAILABLE FOR LEASE

4,000 SF INDUSTRIAL SPACE WITH FENCED YARD

LEASE RATE: \$12.00/SF NNN | NNN (EST.): \$6.75/SF

AVAILABLE APRIL 1, 2026



14215 MEAD ST., UNIT A, LONGMONT, COLORADO 80504
BUILDING 2

AVAILABLE FOR LEASE

4,000 SF

LEASE RATE: \$12.00/SF NNN

NNN (EST.): \$6.75/SF



PROPERTY FEATURES

Available Size:	4,000 SF
Building Size:	12,000 SF
Year Built:	1998
Clear Height:	15.5' - 21.5'
Loading:	One (1) 12' x 14' overhead door
Zoning:	LI - Light Industrial



Click Link Here

PROPERTY HIGHLIGHTS

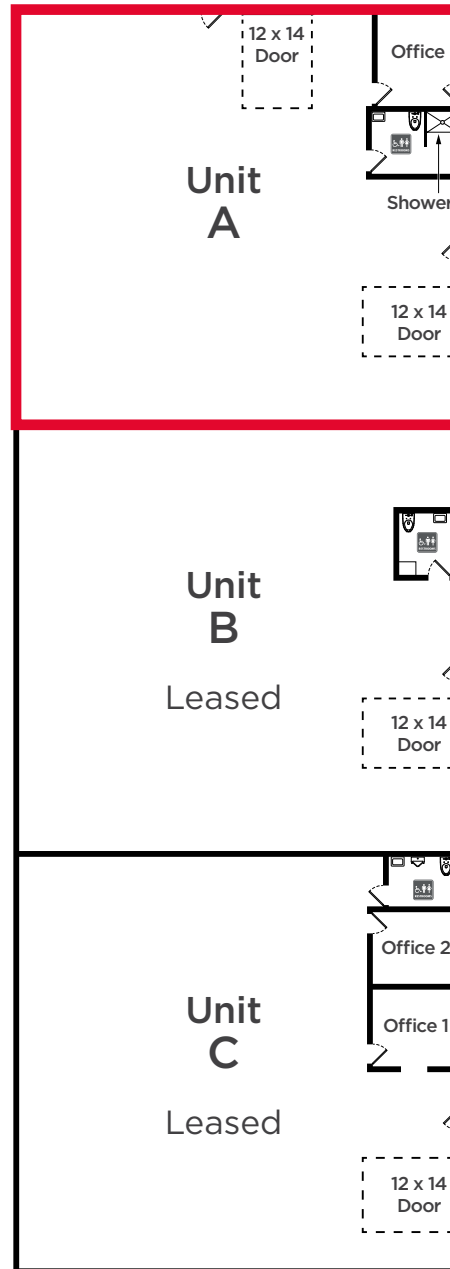
- 1 office, 1 bathroom
- Fenced yard space available
- Excellent street presence and visibility on Mead Street
- One large drive-in door
- Clear span, sprinklers and radiant heat
- One turn access from I-25/Hwy. 55
- Professionally managed building
- NNN's do not include electric

*No automotive uses

14215 MEAD ST., UNIT A, LONGMONT, COLORADO 80504

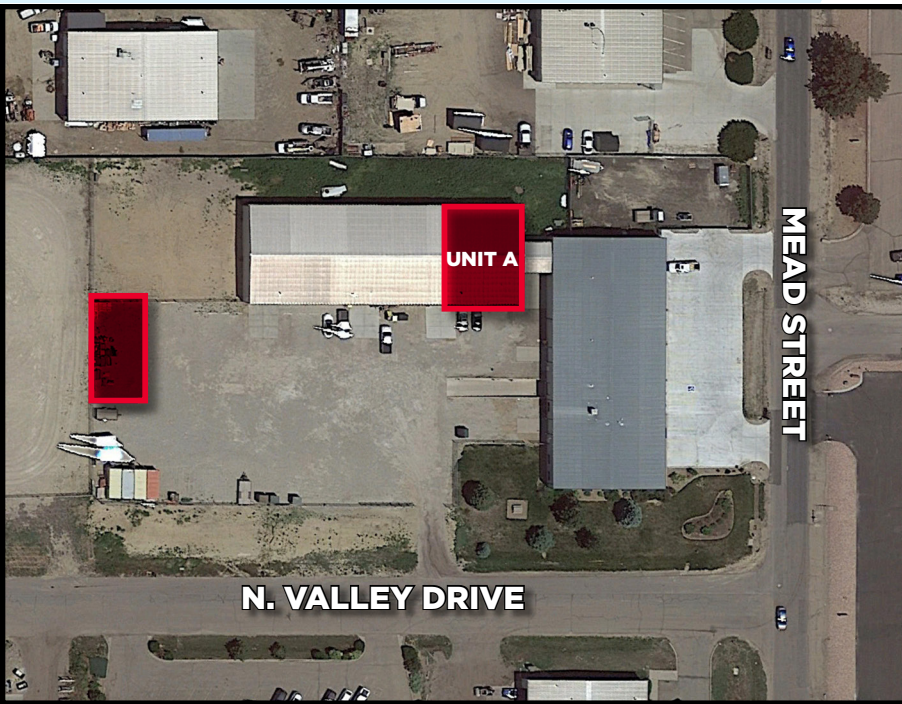
BUILDING 2

AVAILABLE FOR LEASE



14215 MEAD ST., UNIT A

LONGMONT, COLORADO 80504
BUILDING 2



CONTACT INFORMATION

TY MASHEK
Senior Associate
+1 303 525 3125
ty.mashek@cushwake.com

TRAVIS ACKERMAN
Executive Managing Director
+1 970 267 7720
travis.ackerman@cushwake.com

772 Whalers Way, Suite 200
Fort Collins, Colorado 80525

T +1 970 776 3900
F +1 970 267 7419
cushmanwakefield.com

