



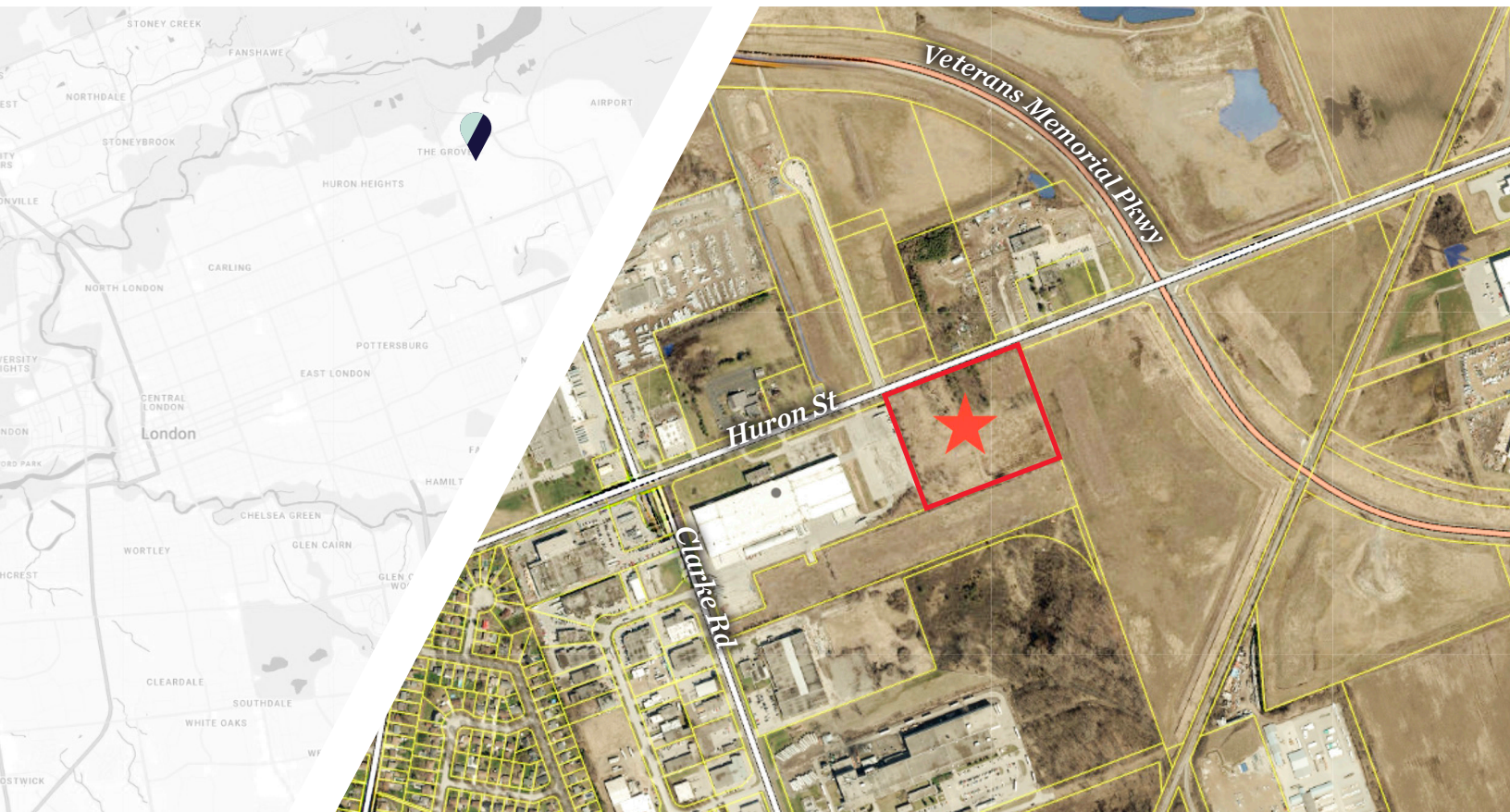
**CUSHMAN &
WAKEFIELD**

Southwestern Ontario

FOR SALE

1931 HURON STREET

London, ON



AN EXCEPTIONAL INDUSTRIAL PARCEL IN EAST LONDON

ASKING PRICE

\$4,500,000

SITE AREA

10.7 ACRES

ZONING

HI1, GI1

JAMESON LAKE

Sales Representative

519 438 8548

jameson.lake@cushwakeswo.com

CUSHMAN & WAKEFIELD
SOUTHWESTERN ONTARIO
850 Medway Park Dr, Suite 201
London, Ontario N6G 5G6
www.cushwakeswo.com

©2026 Cushman & Wakefield Southwestern Ontario, Real Estate Brokerage, Independently Owned and Operated. A Member of the Cushman & Wakefield Alliance.
This information has been obtained from sources believed to be reliable but has not been verified. No warranty or representation, express or implied, is made as to the condition of the property (or properties) referenced herein or as to the accuracy or completeness of the information contained herein, and same is submitted subject to errors, omissions, change of price, rental or other conditions, withdrawal without notice, and to any special listing conditions imposed by the property owner(s). Any projections, opinions or estimates are subject to uncertainty and do not signify current or future property performance. All rights reserved.

ABOUT THE PROPERTY

An exceptional 10.7-acre industrial parcel in east London, ideally positioned within a well-established industrial district minutes from London International Airport. Offering over 748' of frontage and flexible heavy and general industrial zoning, this property is also designated heavy industrial under the City of London's official plan, supporting a wide range of industrial uses. With its generous size, favourable configuration, and strategic location, the site presents a prime opportunity for new development or long-term investment in one of London's most active industrial corridors.

- **Zoning:** HI1, GI1 - Heavy and General Industrial
- **Taxes:** \$26,793.60 (2025)

- Property is being sold under power of sale

PERMITTED | HI1

Armaments, munitions and explosive manufacturing industries	Warehouse establishments
Manufacturing and assembly industries	Waste treatment facilities
Processed goods industries	Residential and other source recycling facility;(Z.-1-031144)
Raw materials processing industries	Specialized recycling facility;(Z.-1-031144)
Storage depots	In-Vessel composting facility; and (Z.-1-031144)
Terminal centres	Channel composting facility; (Z.-1-031144)
Transport terminals	Impounding Yard; (Z.-1-223025)
Tow Truck Business. (Z.-1-223025)	

<https://london.ca/sites/default/files/2023-06/Zoning%20By-law%20Section%2042.pdf>



PERMITTED USES | GI1

Auction establishments	Manufacturing and assembly industries	Service trades	Wholesale establishments
Automobile body shop	Printing, reproduction and data processing industries	Storage depots	Impounding Yard; (Z.-1-223025)
Automobile repair garages	(Private Clubs deleted by Z.-1-1422087)	Service shop	Tow Truck Business. (Z.-1-223025)
Building or contracting establishments	Processed goods industries	Terminal centres	
(commercial recreations establishment deleted by Z.-1-142287)	Repair and rental establishments	Transport terminals	
Dry cleaning and laundry plants	Research and development establishments	Truck sales and service establishments; (Z.-1-051390)	
Food, tobacco and beverage processing industries	Service and repair establishments	Warehouse establishments	

<https://london.ca/sites/default/files/2023-09/Zoning%20By-law%20Section%2041.pdf>

JAMESON LAKE

Sales Representative

519 438 8548

jameson.lake@cushwakeswo.com

CUSHMAN & WAKEFIELD
SOUTHWESTERN ONTARIO
850 Medway Park Dr, Suite 201
London, Ontario N6G 5G6
www.cushwakeswo.com

CUSHMAN & WAKEFIELD
Southwestern Ontario

©2026 Cushman & Wakefield Southwestern Ontario, Real Estate Brokerage, Independently Owned and Operated. A Member of the Cushman & Wakefield Alliance. This information has been obtained from sources believed to be reliable but has not been verified. No warranty or representation, express or implied, is made as to the condition of the property (or properties) referenced herein or as to the accuracy or completeness of the information contained herein, and same is submitted subject to errors, omissions, change of price, rental or other conditions, withdrawal without notice, and to any special listing conditions imposed by the property owner(s). Any projections, opinions or estimates are subject to uncertainty and do not signify current or future property performance. All rights reserved.