



# CORPORATE LANE

Nampa, ID 83651

5,112 SF FOR SALE





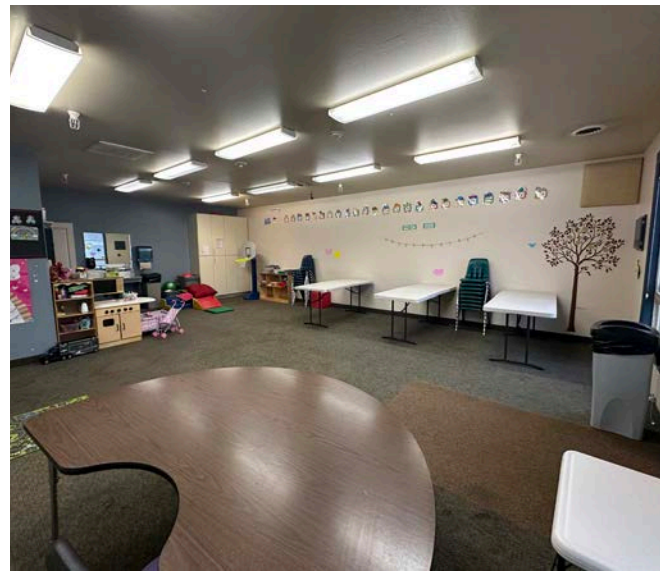


# PROPERTY HIGHLIGHTS

<b>Sale Price:</b>	\$1,250,000
<b>Building Size:</b>	5,112 SF
<b>Lot Size:</b>	0.41 Acres
<b>Parking:</b>	On-Site Parking
<b>Zoning:</b>	City of Nampa BC (Community Business)
<b>Parcel #:</b>	R3133100000

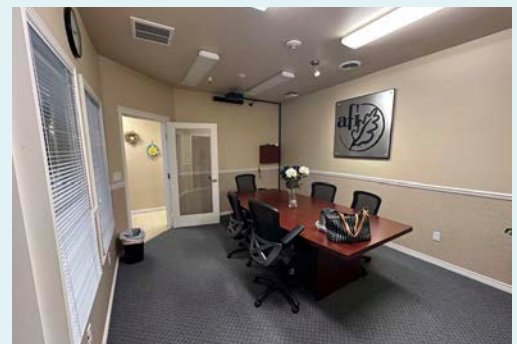
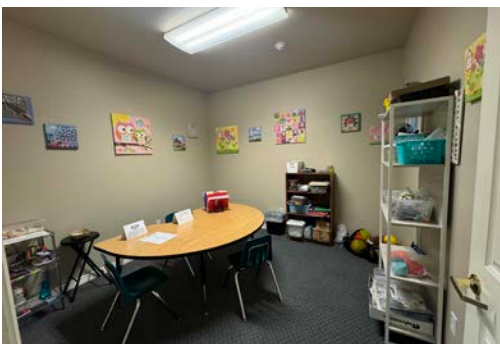
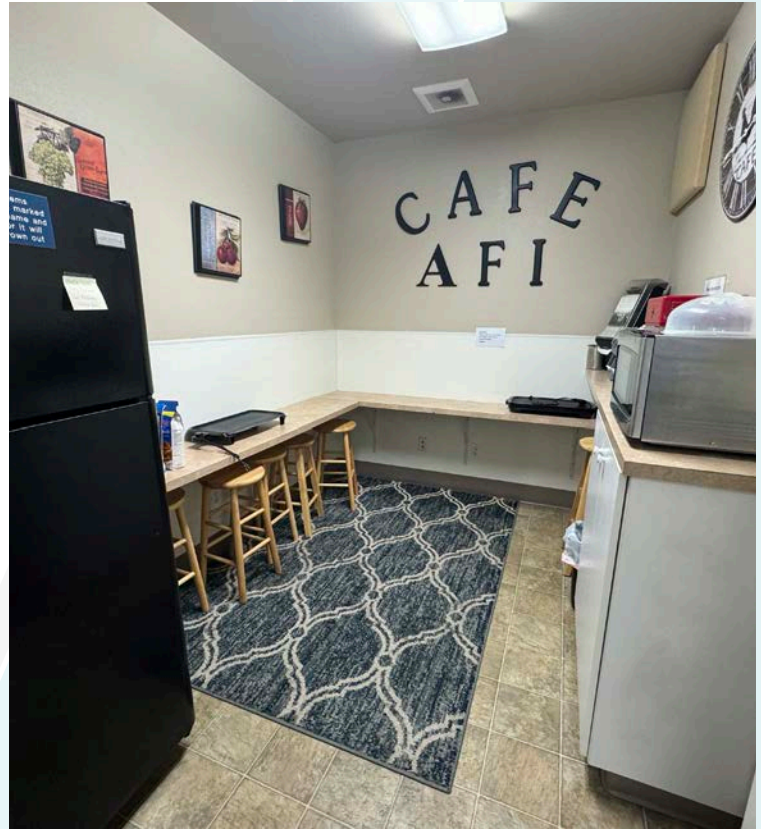
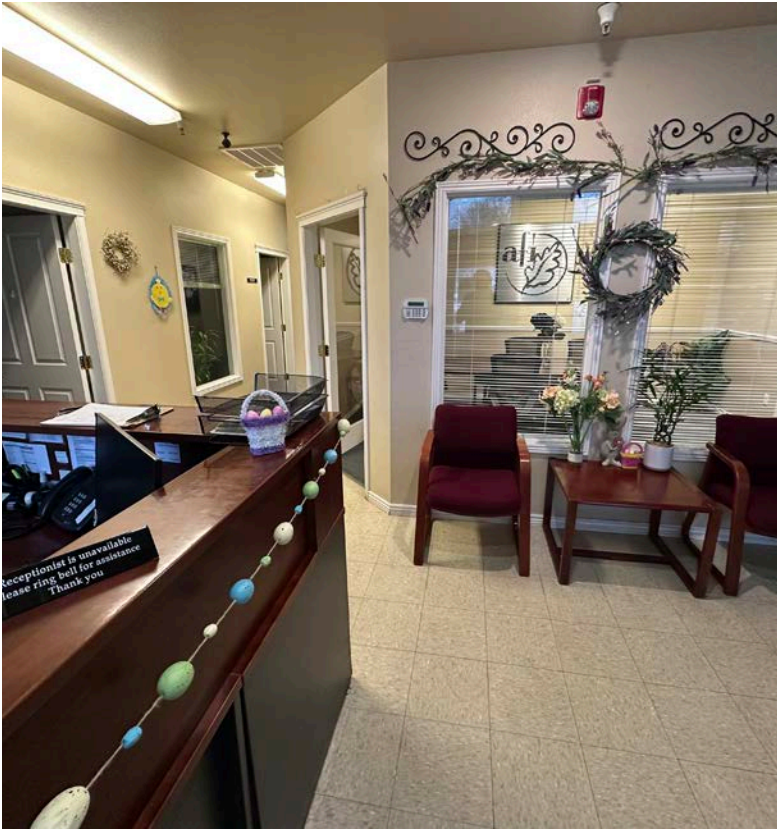
## LISTING FEATURES

- Conveniently situated just off Midland in Nampa
- Ideal for owner-occupier or can be divided into six separate units for multiple tenants
- Ample on-site parking available
- Quick access to downtown Nampa and the freeway
- Surrounded by numerous restaurants and other amenities on neighboring streets
- Contact agents to schedule a walk through!

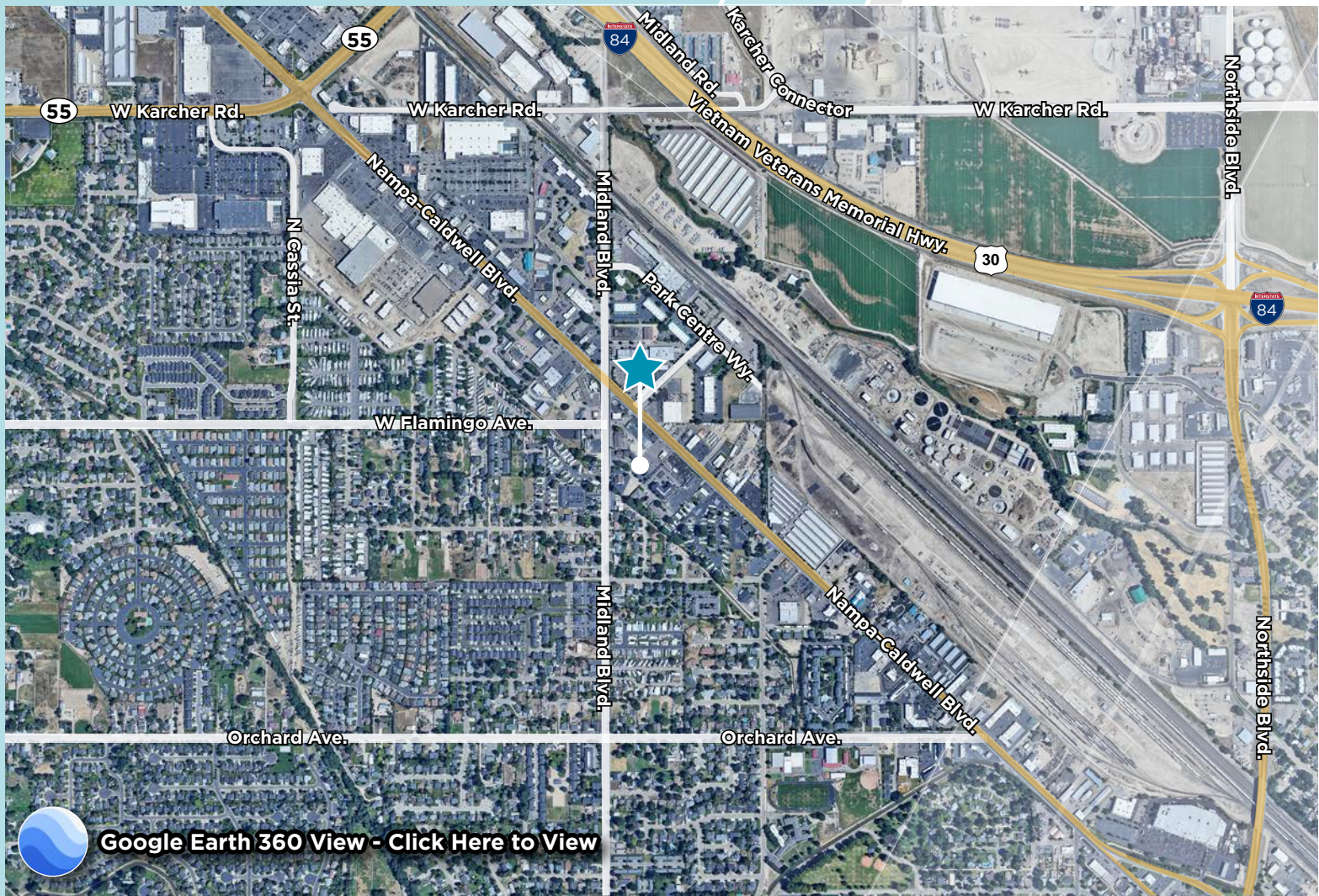




# PROPERTY PHOTOS







**Jennifer McEntee**

Senior Director  
Office | Capital Markets  
+1 208 287 9495  
jennifer.mcentee@cushwake.com

**Bree Wells**

Director  
Office | Capital Markets  
+1 208 287 9492  
bree.wells@cushwake.com

**Braydon Torres**

Associate  
Office | Capital Markets  
+1 208 207 9485  
braydon.torres@cushwake.com



©2025 Cushman & Wakefield. All rights reserved. The information contained in this communication is strictly confidential. This information has been obtained from sources believed to be reliable but has not been verified. NO WARRANTY OR REPRESENTATION, EXPRESS OR IMPLIED, IS MADE AS TO THE CONDITION OF THE PROPERTY (OR PROPERTIES) REFERENCED HEREIN OR AS TO THE ACCURACY OR COMPLETENESS OF THE INFORMATION CONTAINED HEREIN, AND SAME IS SUBMITTED SUBJECT TO ERRORS, OMISSIONS, CHANGE OF PRICE, RENTAL OR OTHER CONDITIONS, WITHDRAWAL WITHOUT NOTICE, AND TO ANY SPECIAL LISTING CONDITIONS IMPOSED BY THE PROPERTY OWNER(S). ANY PROJECTIONS, OPINIONS OR ESTIMATES ARE SUBJECT TO UNCERTAINTY AND DO NOT SIGNIFY CURRENT OR FUTURE PROPERTY PERFORMANCE.