

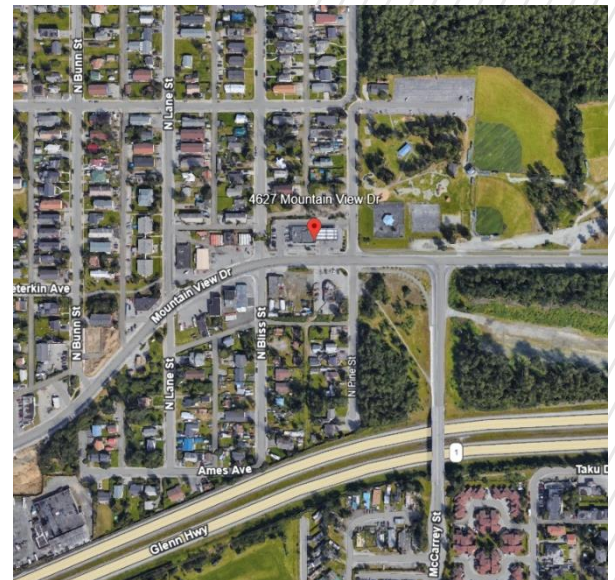


4627 Mountain View Drive  
Anchorage, AK



4627 Mountain View Drive is a flat, cleared commercial lot offering excellent usability and flexibility for development. With versatile B3 zoning, the site supports a wide range of business and commercial development opportunities. Ready for construction and highly usable, this property is an ideal choice for owners or investors seeking a prime development site.

LAND SF	32,400	SPACE USE	MIXED
LAND ACRES	0.74	3-MILE (POP.)	78,606
TRAFFIC COUNTS	12,560 VPD	5-MILE (POP.)	134,772
		AVG HH. INCOME	\$64,000



**MARK FILIPENKO**  
Broker, CCIM, SIOR  
+1 907 952 1884  
mark@markfilipenko.com

©2021 Cushman & Wakefield. All rights reserved. The information contained in this communication is strictly confidential. This information has been obtained from sources believed to be reliable but has not been verified. No warranty or representation, express or implied, is made as to the condition of the property (or properties) referenced herein or as to the accuracy or completeness of the information contained herein, and same is submitted subject to errors, omissions, change of price, rental or other conditions, withdrawal without notice, and to any special listing conditions imposed by the property owner(s). Any projections, opinions or estimates are subject to uncertainty and do not signify current or future property performance.



## FOR SALE

**4627 Mountain View Drive**  
Anchorage, AK

### LOCATION & MARKET

4627 Mountain View Drive provides outstanding visibility and easy access Highway. The property is conveniently located near Tikahtnu Commons - one of Anchorage's top shopping, dining, and entertainment destinations - and only 1.5 miles from Joint Base Elmendorf-Richardson (JBER), a major regional employer. Its prime position in a strong retail, residential, and workforce corridor makes it an excellent choice for businesses looking to grow and establish long-term success.



### LEGAL INFORMATION

<b>TAX PARCEL ID</b>	00502242000
<b>2025 RE TAXES</b>	\$17,826.91
<b>ZONING</b>	B3 – General Business



### RESTRICTIONS

Property will be restricted against uses competitive with convenience stores

### OFFERING PROCESS

Seller will consider the submission of an offer using Seller's Letter of Intent form, which will be provided to qualified buyers. Interested parties should submit an LOI on terms where the Buyer agrees to complete a purchase of the property on the Seller's Real Estate Sales Agreement. All offers must be received by Exclusive Agent, Cushman & Wakefield. Contact information is below:

#### JEFF SCHEIDEGGER

Account Manager  
+1 314-384-8662  
jeff.scheidegger@cushwake.com

#### JAMES LEWIS

Transaction Manager  
+1 314-391-2757  
james.lewis@cushwake.com

#### MARK FILIPENKO

Broker, CCIM, SIOR  
+1 907 952 1884  
mark@markfilipenko.com