



1600 E. Orangethorpe Ave, Fullerton, CA

For Lease: ±15,017 SF Creative Industrial Space | Major Street Frontage



1600 E. Orangethorpe Ave, Fullerton, CA

BUILDING FEATURES

- ±15,017 square foot part of larger industrial project
- Immediate access to 91 & 57 freeways
- Major street frontage on Orangethorpe
- ±3,012 square feet of office space
- 1 dock high loading door
- 1 ground level loading door
- 12' warehouse clearance
- Two (2) 250 amp 3 phase 4-wire power (verify)
- 2.0:1,000 SF parking ratio

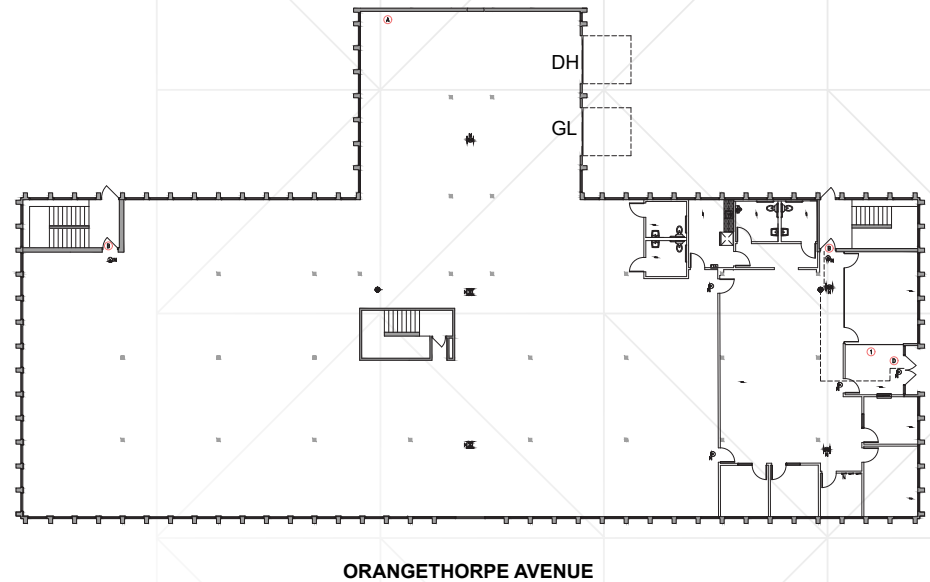


1600 E. Orangethorpe Ave, Fullerton, CA

AERIAL MAP



FLOOR PLAN



For more information,
please contact:

RANDY ELLISON

Senior Director
+1 949 930 4371
randy.ellison@cushwake.com
CA License No. 01469586

RICK ELLISON

Executive Managing Director
+1 949 930 9231
rick.ellison@cushwake.com
CA License No. 01196428



©2018 Cushman & Wakefield. All rights reserved. The information contained in this communication is strictly confidential. This information has been obtained from sources believed to be reliable but has not been verified. NO WARRANTY OR REPRESENTATION, EXPRESS OR IMPLIED, IS MADE AS TO THE CONDITION OF THE PROPERTY (OR PROPERTIES) REFERENCED HEREIN OR AS TO THE ACCURACY OR COMPLETENESS OF THE INFORMATION CONTAINED HEREIN, AND SAME IS SUBMITTED SUBJECT TO ERRORS, OMISSIONS, CHANGE OF PRICE, RENTAL OR OTHER CONDITIONS, WITHDRAWAL WITHOUT NOTICE, AND TO ANY SPECIAL LISTING CONDITIONS IMPOSED BY THE PROPERTY OWNER(S). ANY PROJECTIONS, OPINIONS OR ESTIMATES ARE SUBJECT TO UNCERTAINTY AND DO NOT SIGNIFY CURRENT OR FUTURE PROPERTY PERFORMANCE.

