

# INVESTMENT SALE

## ~10,060 SF



ASKING PRICE: See Broker

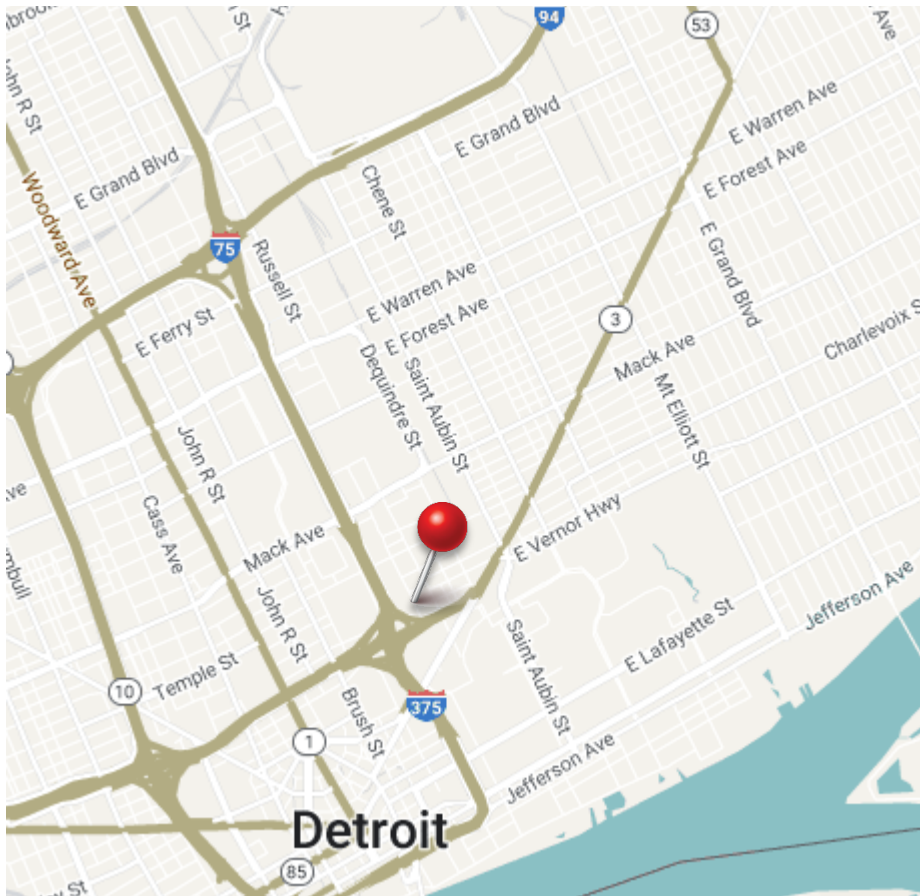
# 2625-2641 RUSSELL STREET

DETROIT, MICHIGAN

# PROPERTY HIGHLIGHTS

2625-2641 Russell Street, Detroit, MI

- Building Size: approximately 10,060 SF
- 2625 Russell St: leased through 10/31/27
- 2637 Russell St: leased through 12/31/27
- 2641 Russell St: 1,720 SF leased month to month
- Zoned B6 - General Services District: flexible zoning accommodating industrial, office, or retail
- Prime location: directly across from Eastern Market Shed #3, walking distance to shops, restaurants, and more



Total Building Area	10,060 SF
Industrial Area	10,060 SF
Office Area	2,447 SF (not included in total SF)
Year Built/ Renovated	1943
Stories	Two (2)
Roof	Rubber Membrane
Total Acreage	0.17 acres
Zoning	B-6: General Services District
Construction Type	Masonry
Building Expandable	No
Ceiling Clearance	16'
Bay Size/ Colum Spacing	Varied
Docks/Wells	None
Grade Doors	Three (3), varied sizes
Industrial Area HVAC	Radiant Heat/ Freezer Cooler
Industrial Area Lighting	Florescent
Electric	240A/208V
Auto Parking	On Street
Parcel ID	05-000922
Fire Suppression	None
Asking Price:	See broker



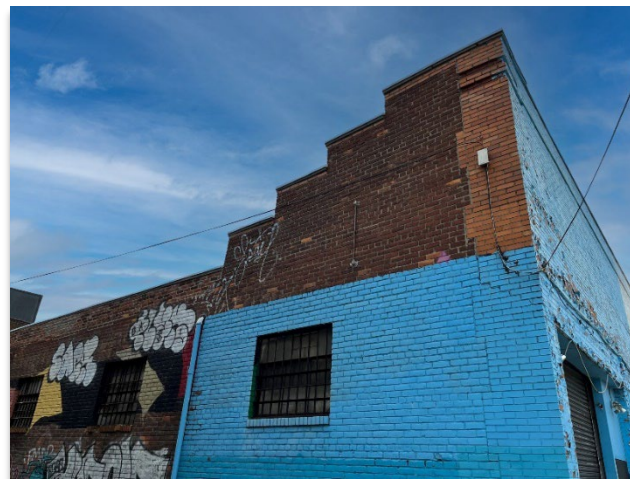


**AERIAL**



# PROPERTY PHOTOS

2625-2641 Russell Street, Detroit, MI





# CONTACT INFORMATION

## John VanNoord

Senior Associate

+1 248 358 6106

[john.vannoord@cushwake.com](mailto:john.vannoord@cushwake.com)

## Conner Salsberry

Director

+1 248 358 6114

[conner.salsberry@cushwake.com](mailto:conner.salsberry@cushwake.com)

## Garrett Keais

Executive Managing Director

+1 248 358 6112

[garrett.keais@cushwake.com](mailto:garrett.keais@cushwake.com)



CUSHMAN &  
WAKEFIELD

©2024 Cushman & Wakefield. All rights reserved. The information contained in this communication is strictly confidential. This information has been obtained from sources believed to be reliable but has not been verified. NO WARRANTY OR REPRESENTATION, EXPRESS OR IMPLIED, IS MADE AS TO THE CONDITION OF THE PROPERTY (OR PROPERTIES) REFERENCED HEREIN OR AS TO THE ACCURACY OR COMPLETENESS OF THE INFORMATION CONTAINED HEREIN, AND SAME IS SUBMITTED SUBJECT TO ERRORS, OMISSIONS, CHANGE OF PRICE, RENTAL OR OTHER CONDITIONS, WITHDRAWAL WITHOUT NOTICE, AND TO ANY SPECIAL LISTING CONDITIONS IMPOSED BY THE PROPERTY OWNER(S). ANY PROJECTIONS, OPINIONS OR ESTIMATES ARE SUBJECT TO UNCERTAINTY AND DO NOT SIGNIFY CURRENT OR FUTURE PROPERTY PERFORMANCE.