

FOR LEASE
1,623 SF - 3,500 SF



652-684
TRANSFER ROAD

ST PAUL, MN

 CUSHMAN &
WAKEFIELD

SH
SABER HALL
PARTNERS

PROPERTY HIGHLIGHTS

- CENTRALLY LOCATED IN THE MIDWAY BUSINESS DISTRICT
- ABUNDANT PARKING
- SHARED CONFERENCE ROOM
- IMMEDIATE ACCESS TO I-94, HWY 280 AND UNIVERSITY AVENUE
- CLOSE PROXIMITY TO RETAIL AMENITIES
- OFFICE & OUTSIDE STORAGE SPACE AVAILABLE
- LOCALLY OWNED AND MANAGED BY SABER HALL PARTNERS

DANNY MCNAMARA
Managing Director
+1 952 893 8895
danny.mcnamara@cushwake.com

KEVIN ANDERSON
Owner
+1 612 720 3266
kevin@smallbayproperties.com

3500 American Blvd W
Minneapolis, MN 55431
Main +1 952 831 1000
IndustrialMN.com



PROPERTY INFORMATION

Address 652-684 Transfer Road
Roseville, MN

Building Size 78,440 SF

Total Land 5.36 Acres

Year Built 1975

Clear Height 14'

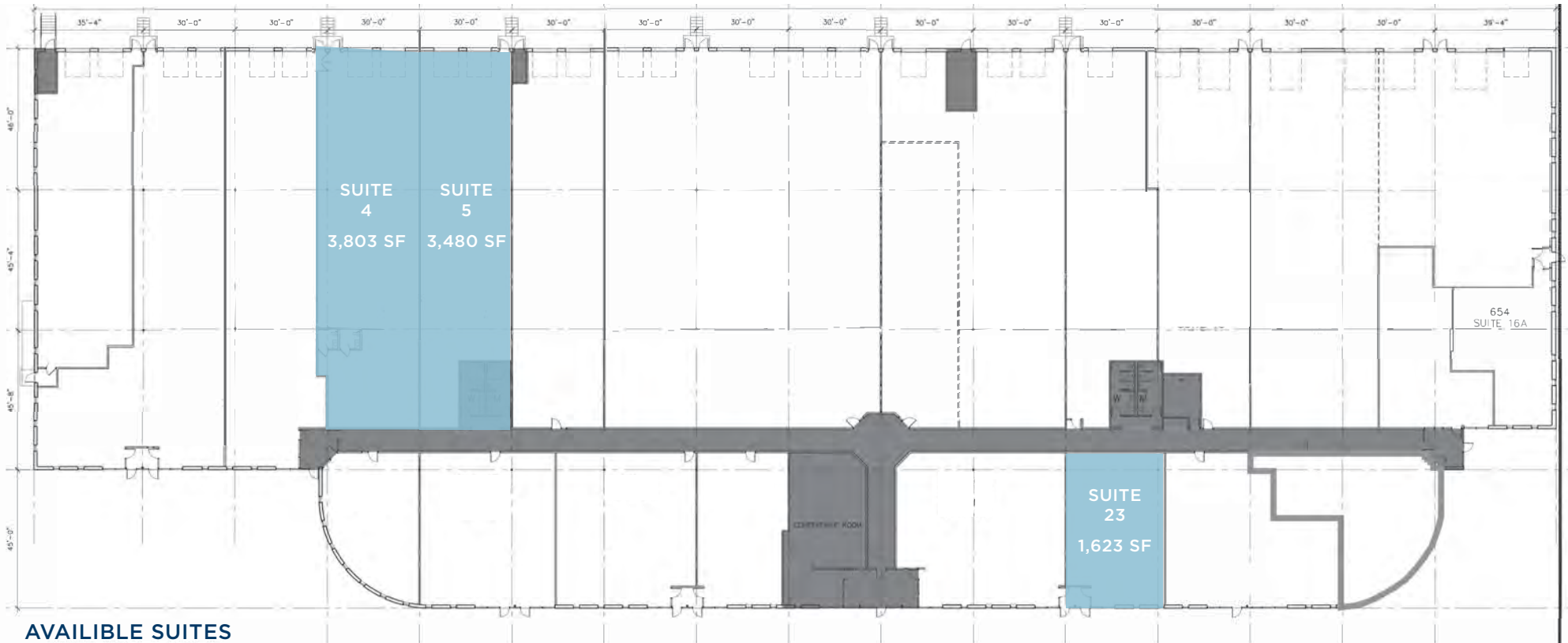
Parking 185 parking spaces

Net Rental Rate Negotiable

2026 CAM & TAX \$6.51 PSF Total



BUILDING FLOOR PLAN

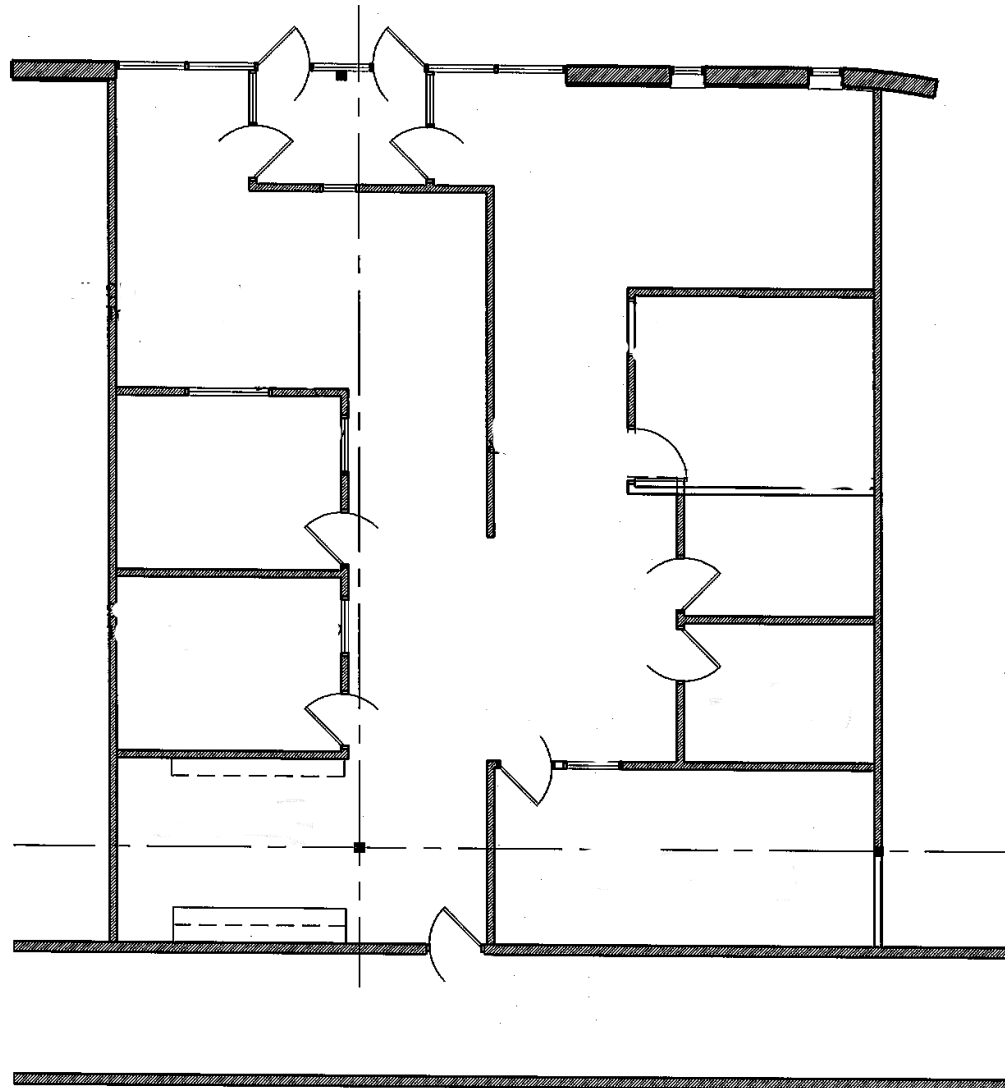


AVAILABLE SUITES

Suite	Total SF	Office SF	Warehouse SF
4	3,803 SF	0	3,803 SF
5	3,480 SF	0	3,480 SF
23	1,623 SF	1,623 SF	0

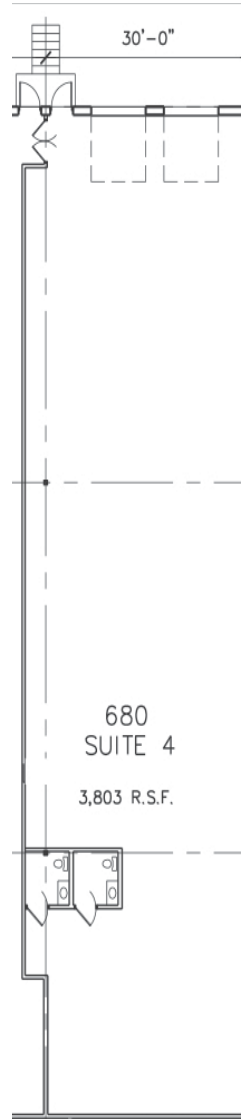
SUITE FLOOR PLAN

SUITE 23
1,623 SF OFFICE



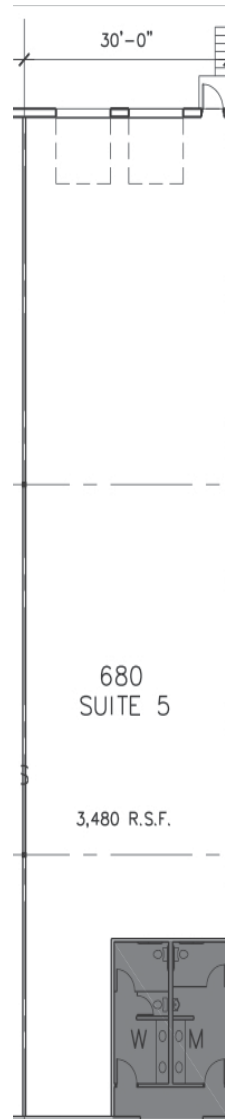
SUITE FLOOR PLAN

SUITE 4
3,803 SF WAREHOUSE

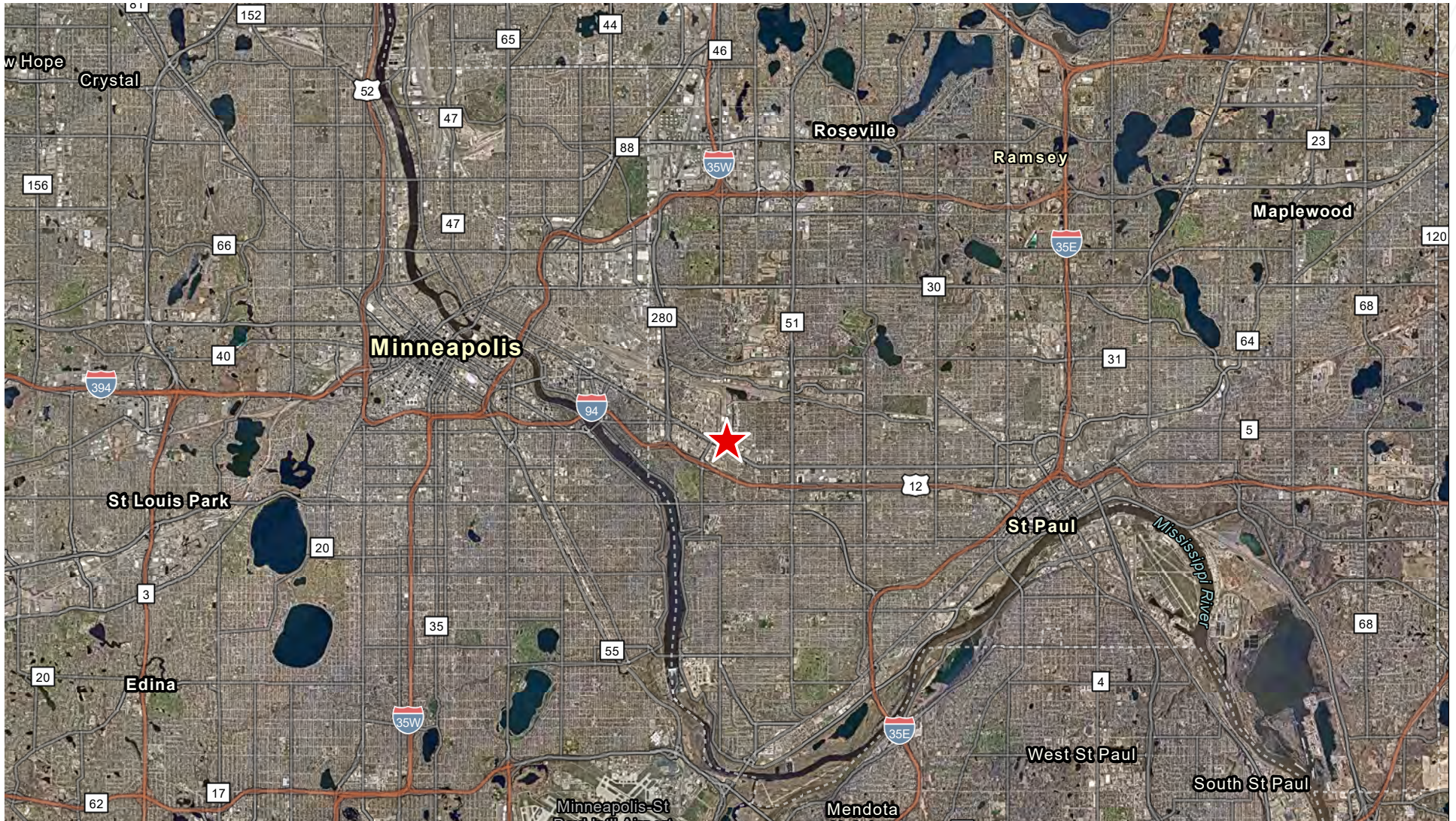


SUITE FLOOR PLAN

SUITE 5
3,480 SF WAREHOUSE







DANNY MCNAMARA
Managing Director
Direct: +1 952 893 8895
danny.mcnamara@cushwake.com

KEVIN ANDERSON
Owner
+1 612 720 3266
kevin@smallbayproperties.com

3500 American Blvd W
Minneapolis, MN 55431
952 831 1000
IndustrialMN.com

©2025 Cushman & Wakefield. All rights reserved. The information contained in this communication is strictly confidential. This information has been obtained from sources believed to be reliable but has not been verified. NO WARRANTY OR REPRESENTATION, EXPRESS OR IMPLIED, IS MADE AS TO THE CONDITION OF THE PROPERTY (OR PROPERTIES) REFERENCED HEREIN OR AS TO THE ACCURACY OR COMPLETENESS OF THE INFORMATION CONTAINED HEREIN, AND SAME IS SUBMITTED SUBJECT TO ERRORS, OMISSIONS, CHANGE OF PRICE, RENTAL OR OTHER CONDITIONS, WITHDRAWAL WITHOUT NOTICE, AND TO ANY SPECIAL LISTING CONDITIONS IMPOSED BY THE PROPERTY OWNER(S). ANY PROJECTIONS, OPINIONS OR ESTIMATES ARE SUBJECT TO UNCERTAINTY AND DO NOT SIGNIFY CURRENT OR FUTURE PROPERTY PERFORMANCE.