



TSQ NYC

**NEWLY DEMOLISHED AND
WHITE-BOXED RETAIL ON
42ND STREET**

**234
W42ND ST**

BETWEEN SEVENTH & EIGHTH AVENUE, MANHATTAN NYC



MADISON
INTERNATIONAL
REALTY



CUSHMAN &
WAKEFIELD

UNIQUE TIMES SQUARE RETAIL OPPORTUNITY

25,403 SF



STEPS FROM NEW YORK CITY'S
LARGEST TRANSIT HUB
65M+
ANNUAL RIDERS
TIMES SQ 42ND STREET STATION

*STATS PROVIDED BY TIMES SQUARE ALLIANCE



IN THE HEART OF
NEW YORK CITY'S
WORLD FAMOUS
THEATER &
ENTERTAINMENT
DISTRICT

ADJACENT TO NATION'S
TOP 2 HIGHEST GROSSING
MOVIE THEATERS
**AMC &
REGAL CINEMAS**

ADJACENT TO
MADAME TUSSAUDS
AND A TOP GROSSING
DAVE & BUSTERS

*STATS PROVIDED BY TIMES
SQUARE ALLIANCE

234 W42ND ST

AVAILABLE

SECOND: 7,311 SF

MEZZANINE: 3,922 SF

GROUND FLOOR: 14,170 SF

TOTAL: 25,403 SF

FRONTAGE 35'

CEILING HEIGHTS:

Ground: 28 FT

Second & Mezzanine: 12 FT

Possession - Immediate

Lease Type - Direct

Asking Rent - Upon Request

OPPORTUNITY

- Unique retail opportunity perfectly located in the heart of 42nd Street.
- Ability for massive double-height electronic marquee signage.

LOCATION

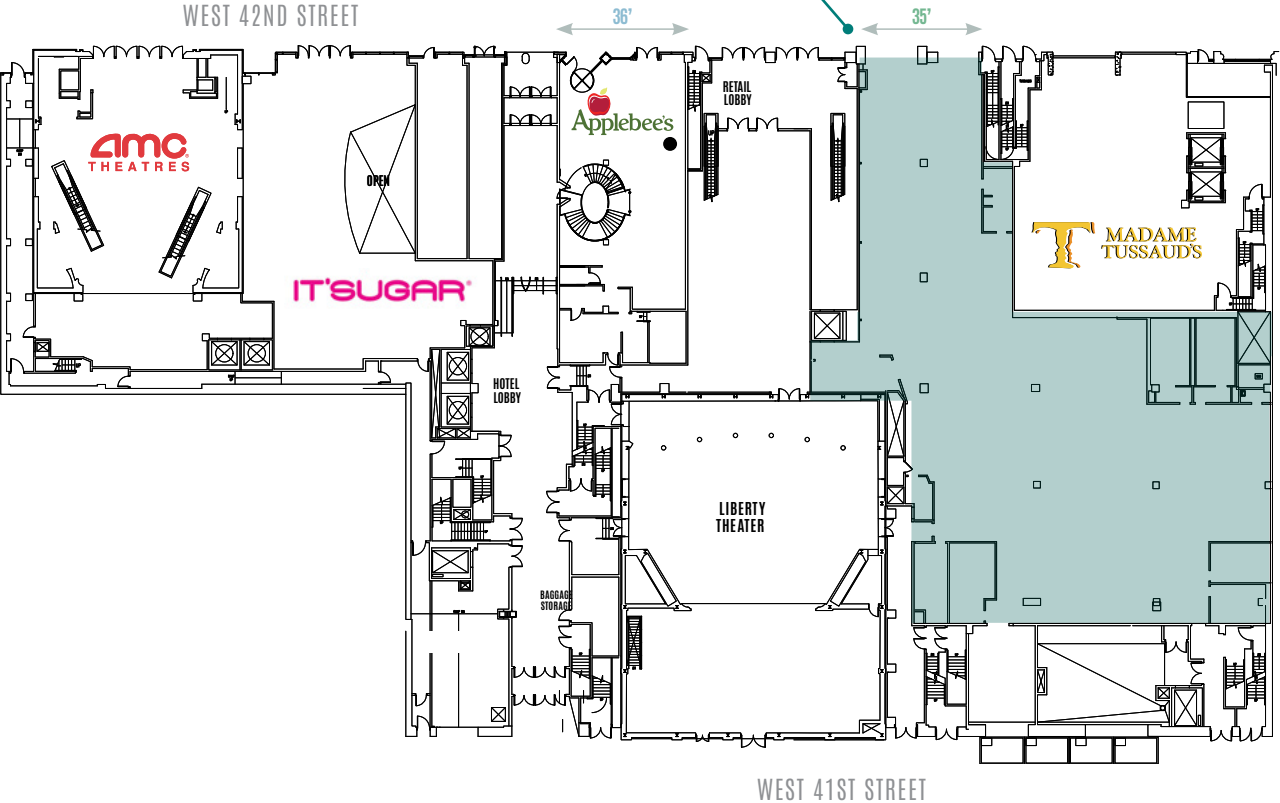
- Located mid-block on the south side of 42nd Street between Seventh and Eighth Avenues, in the heart of New York's Theater and Entertainment District.
- 42nd Street is a world-famous thoroughfare and is a brand unto itself. It is also among the most heavily pedestrian-trafficked cross-streets in Manhattan.



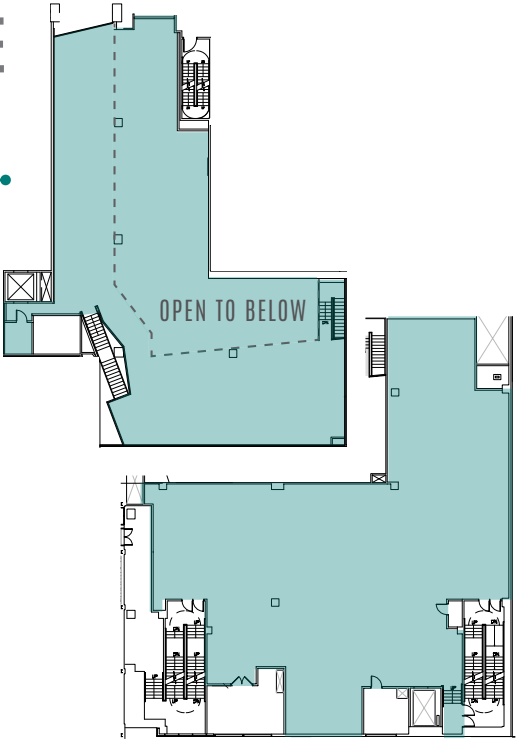
234
W42ND ST

25,403 SF

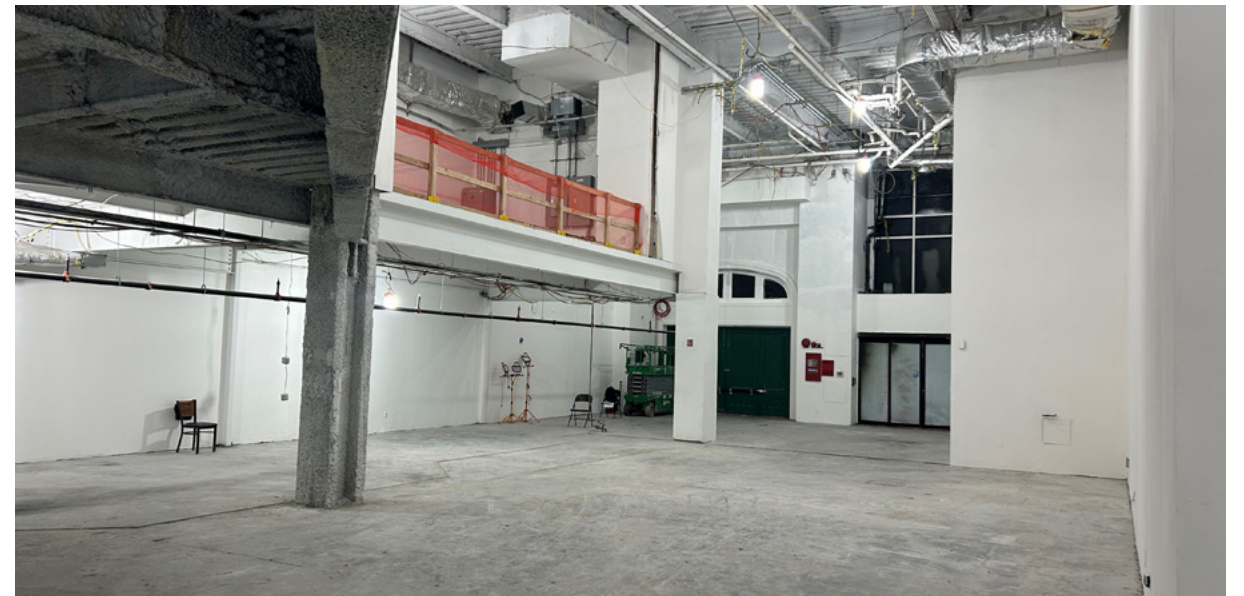
GROUND FLOOR 14,170 SF



MEZZANINE 3,922 SF



SECOND FLOOR 7,311 SF



234
W42ND ST



AT THE CENTER OF
NYC'S WORLD-FAMOUS
TIMES SQUARE

1/2 BLOCK FROM
PORT AUTHORITY
250K
DAILY COMMUTERS

OVER
\$3B
CONSUMER SPENDING
IN TIMES SQUARE IN 2024

IMMEDIATE
PROXIMITY TO
1 2 3 7 S
A C E N Q W R
79.6M
RIDERSHIP IN 2024

245.7K
DAILY VISITORS
73.5M
ANNUAL VISITORS
IN TIMES SQUARE



TSQ NYC

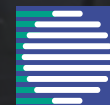
Alan Schmerzler 212 841 5930
ALAN.SCHMERZLER@CUSHWAKE.COM

Diana D. Boutross 212 841 5097
DIANA.BOUTROSS@CUSHWAKE.COM

Ian Lerner 212 841 5948
IAN.LERNER@CUSHWAKE.COM



234
W42ND ST



MADISON
INTERNATIONAL
REALTY



CUSHMAN &
WAKEFIELD