

FOR LEASE



CUSHMAN &
WAKEFIELD



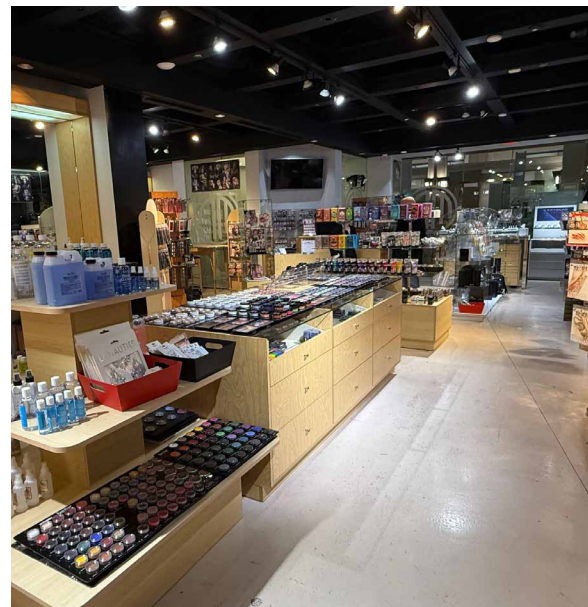
SHAW TOWER

AT CATHEDRAL PLACE

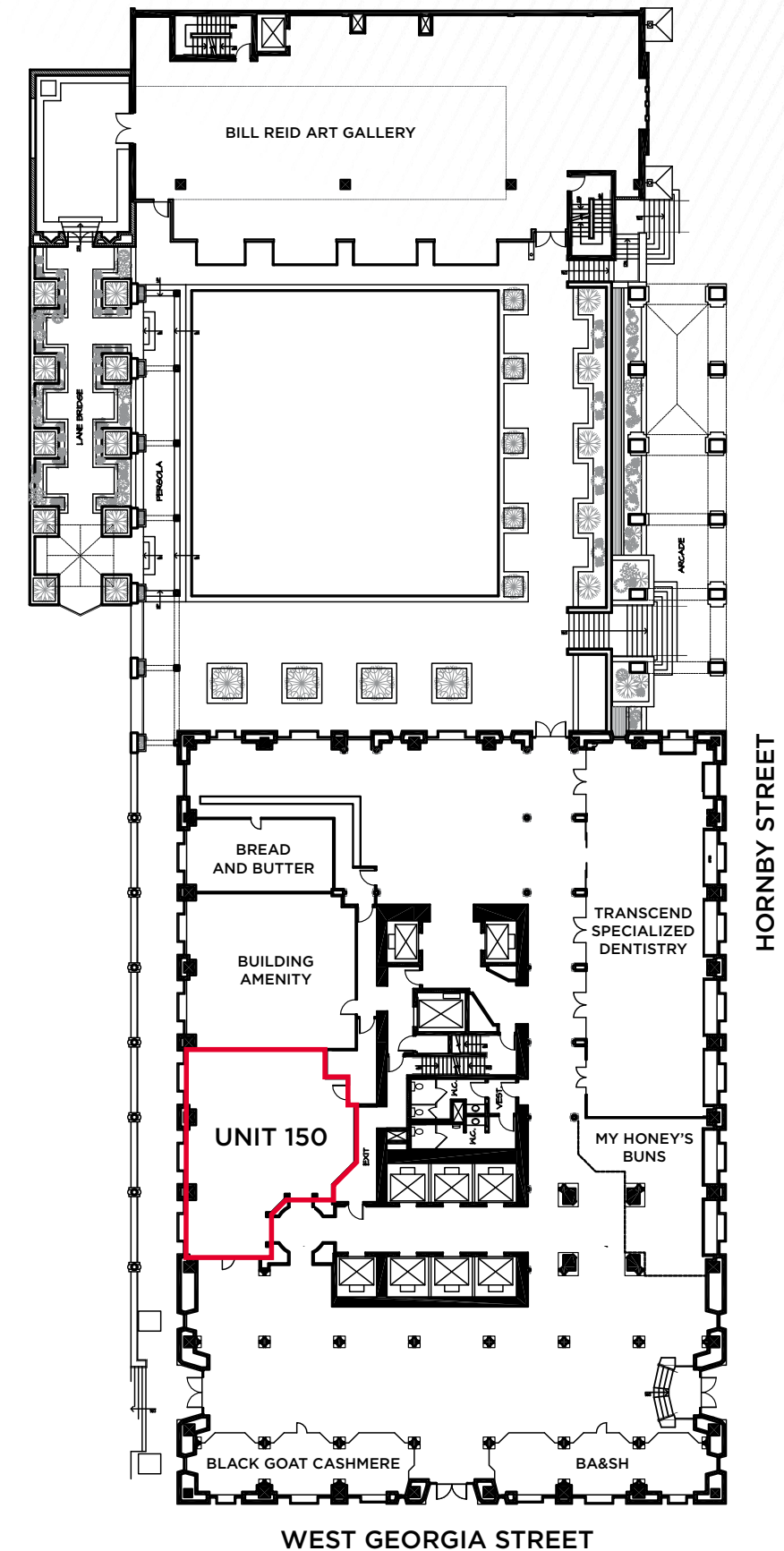
#150 - 925 WEST GEORGIA STREET
VANCOUVER, BC

Prime Retail in the Central Business District





FLOOR PLAN



LOCATION

The subject premise is located at one of downtown Vancouver's most iconic office buildings at the northwest corner of West Georgia and Hornby Street. Direct access is from either the exterior storefront entry or the interior lobby entrance.

OPPORTUNITY

To lease a rare showcase style premises in the Shaw Tower at Cathedral Place positioned near large neighbouring office buildings, luxury goods retailers and some of Vancouver's major hotels.

FEATURES

- Large expansive glazed storefront
- 200 Amp electrical service
- Interior and exterior access
- In suite washroom
- Directly adjacent to Hotel Vancouver

AVAILABLE AREA

1,399 SF

BASE RENT

Contact listing broker for details

TAXES & OPERATING COSTS

\$20.54 PSF + 4.5% management fee

AVAILABLE

Contact listing broker for details



FOR MORE INFORMATION, PLEASE CONTACT:

Alastair Fergusson
Associate Vice President
Retail Sales & Leasing
+1 604 640 5825
alastair.fergusson@cushwake.com

Suite 1200 - 700 West Georgia Street / PO Box 10023, Pacific Centre / Vancouver, BC V7Y 1A1 / +1 604 683 3111 / cushmanwakefield.ca

E.&O.E.: This communication is not intended to cause or induce breach of an existing agency agreement. The information contained herein was obtained from sources which we deem reliable and, while thought to be correct, is not guaranteed by Cushman & Wakefield ULC 11/25

©2025 Cushman & Wakefield ULC. All rights reserved. The information contained in this communication is strictly confidential. This information has been obtained from sources believed to be reliable but has not been verified. NO WARRANTY OR REPRESENTATION, EXPRESS OR IMPLIED, IS MADE AS TO THE CONDITION OF THE PROPERTY (OR PROPERTIES) REFERENCED HEREIN OR AS TO THE ACCURACY OR COMPLETENESS OF THE INFORMATION CONTAINED HEREIN, AND SAME IS SUBMITTED SUBJECT TO ERRORS, OMISSIONS, CHANGE OF PRICE, RENTAL OR OTHER CONDITIONS, WITHDRAWAL WITHOUT NOTICE, AND TO ANY SPECIAL LISTING CONDITIONS IMPOSED BY THE PROPERTY OWNER(S). ANY PROJECTIONS, OPINIONS OR ESTIMATES ARE SUBJECT TO UNCERTAINTY AND DO NOT SIGNIFY CURRENT OR FUTURE PROPERTY PERFORMANCE.



**CUSHMAN &
WAKEFIELD**

