

2233 INTERSTATE NORTH DR.

Suite O
Charlotte, NC



FOR LEASE

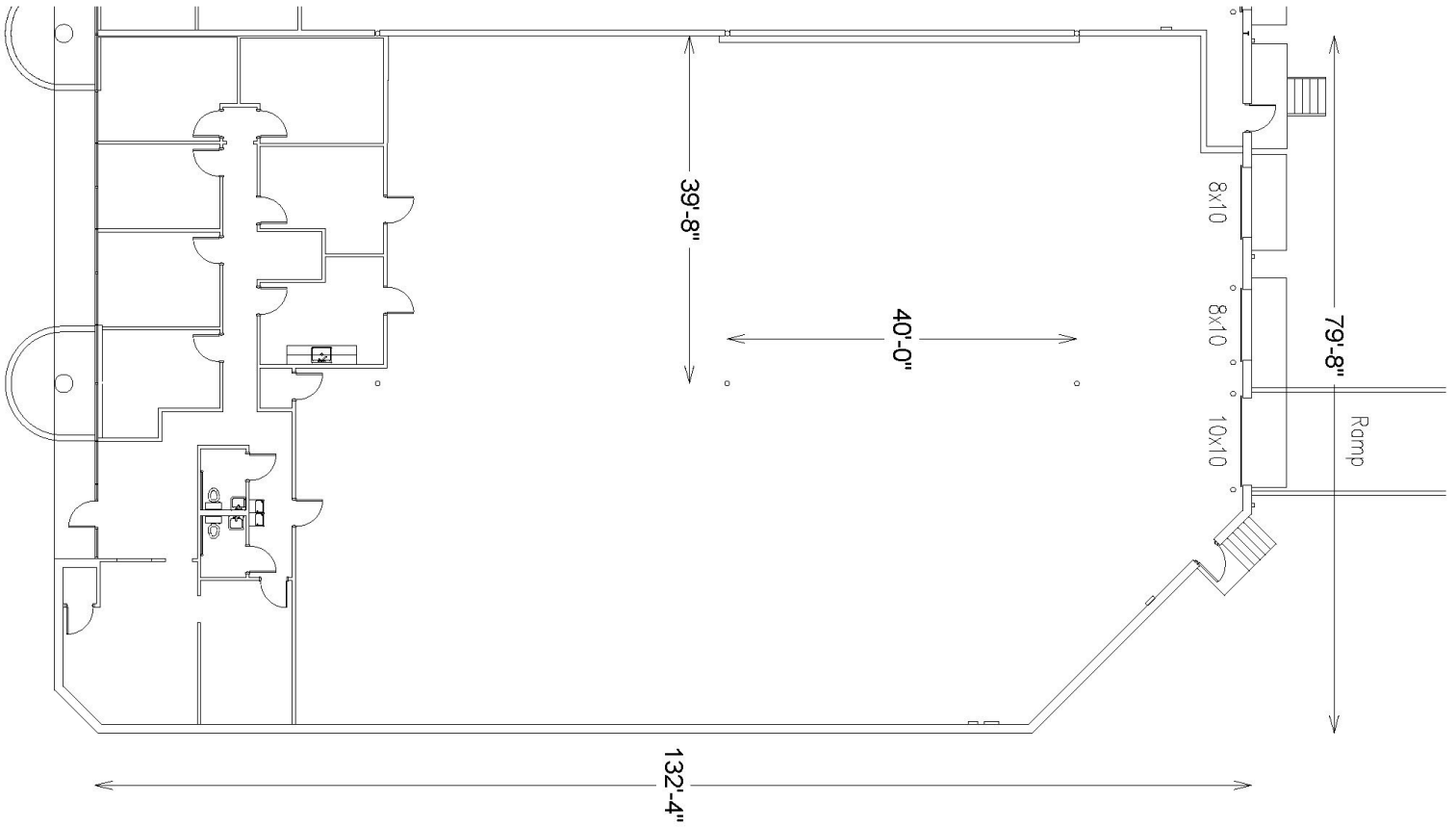
±10,647 SF

Suite O



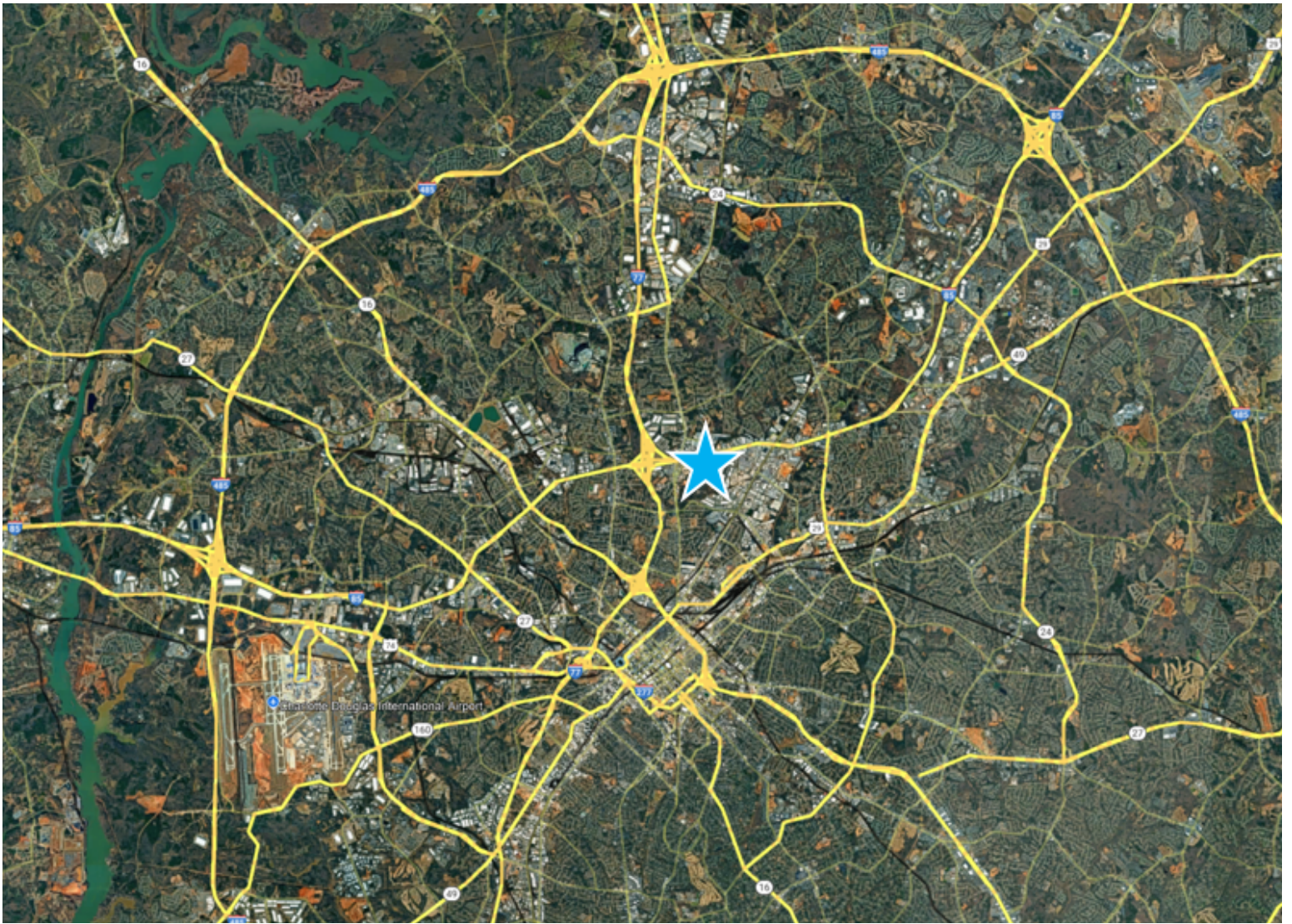
LEASED BY





BUILDING SPECS:

Total SF	10,647
Office SF	2,580
Clear Height	18'
Dock High Doors	2 (8' x 10')
Drive in Doors	1 (10' x 10')
Zoning	I-2
Fire Protection	Wet



DRIVE TIMES

I-77	1.5 Miles 5 Minutes
I-485	8.5 Miles 10 Minutes
I-85	1 Miles 3 Minutes
Uptown Charlotte	4.2 Miles 15 Minutes
Raleigh, NC	161 Miles 2.5 Hours
Atlanta, GA	245 Miles 4 Hours

CONTACT INFORMATION

2233 Interstate North Drive Ste O
Charlotte, NC

Matt Treble

matt.treble@cushwake.com
(704) 335 4430

Fermin Deoca

fermin.deoca@cushwake.com
(704) 335 4436

Frances Crisler

france.crisler@cushwake.com
(704) 620 6014

This document is for informational purposes only and does not constitute an offer or acceptance of a lease. Any lease agreement must be in writing and signed by the landlord. No representations or warranties are made except as expressly stated in a signed lease. Information is provided "as is" and may be subject to errors or change without notice.



LEASED BY

