

CUSHMAN &
WAKEFIELD

LUND
COMPANY

I-80 LOGISTICS HUB HUB

LOT 5

PAPILLION, NE 68138

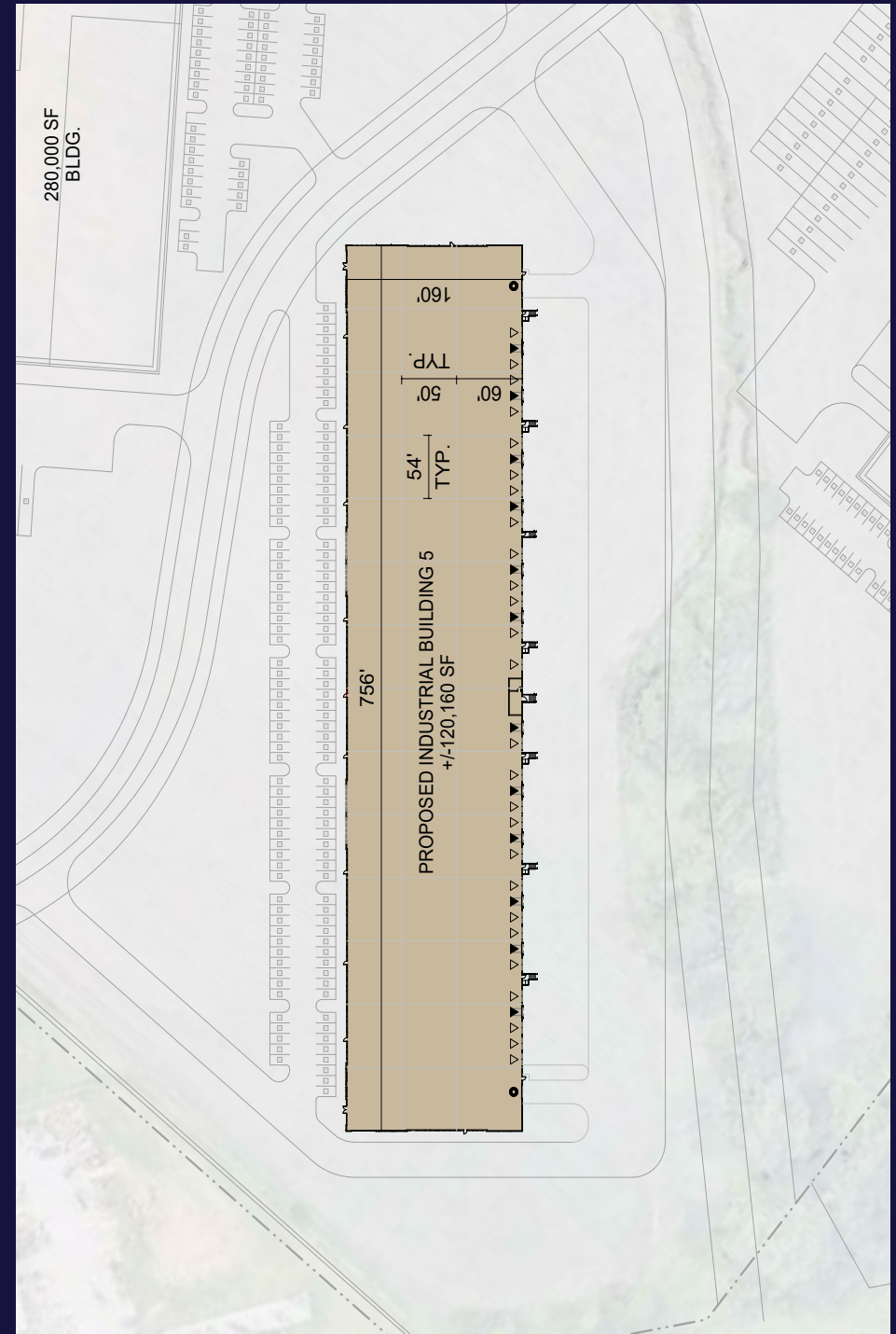


120,000 SF BUILD-TO-SUIT

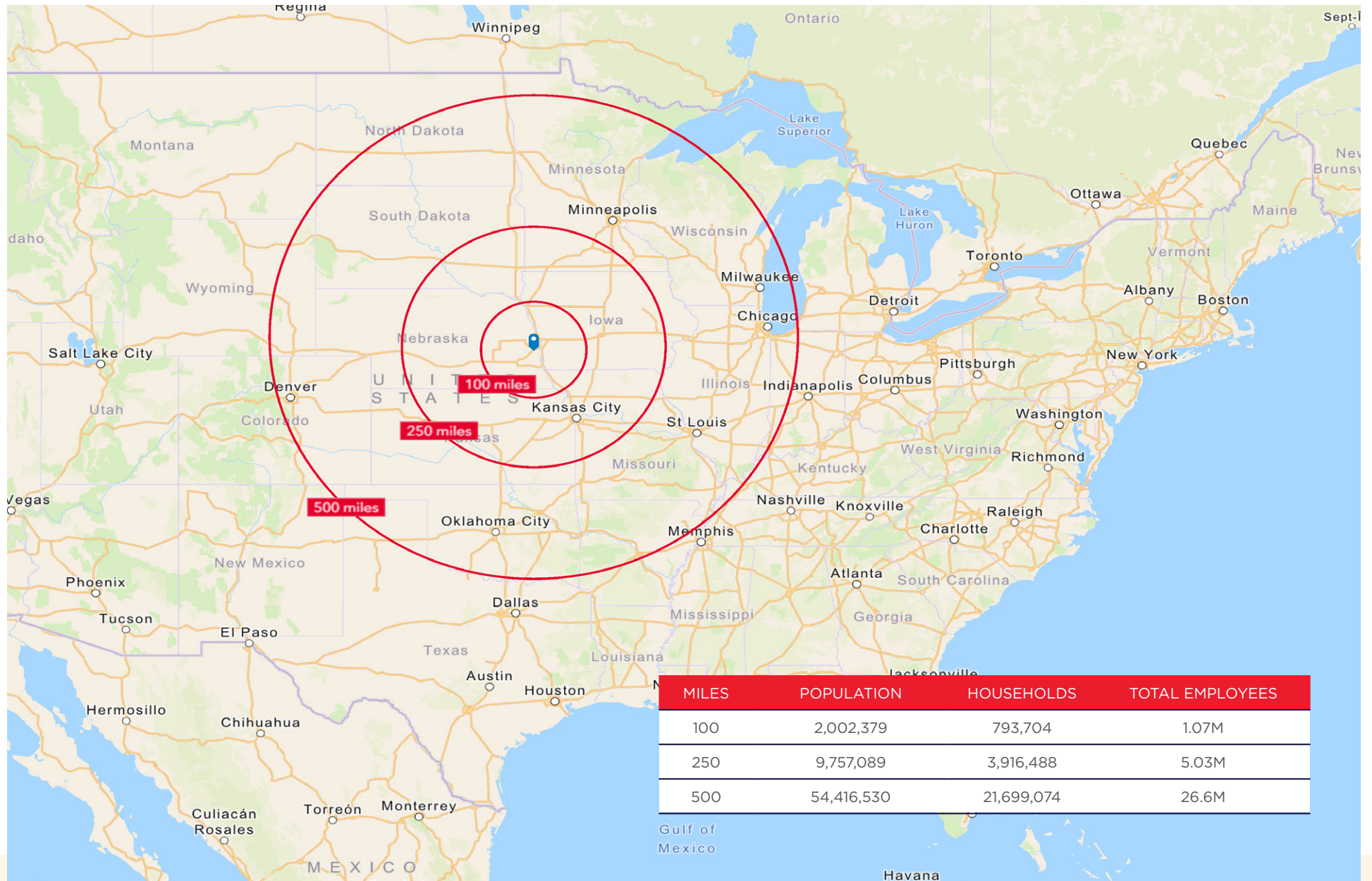
PROPERTY HIGHLIGHTS

Opportunity for an 80,000 – 120,000 SF build-to-suit industrial building with proven, local developer. Join Amazon, GXO, UPS, Home Depot and Scooters at the 140-acre, fully entitled, I-80 Logistics Hub Development. Great access and visibility to I-80, the second longest interstate highway in the US, stretching from California to New Jersey.

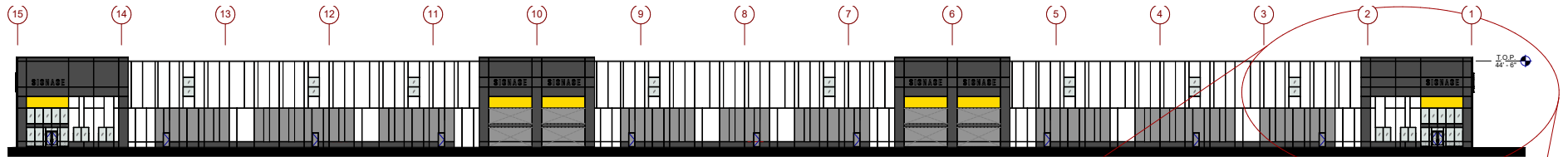
Lease Rate:	TBD
Building Size:	120,000 SF
Minimum Divisible:	80,000 SF
Max Contiguous:	120,000 SF
Total Site Area:	9.8 AC
Clearance Height:	Build-to-suit
Dock/Drive Doors:	Build-to-suit
Column Spacing:	Build-to-suit
Auto/Trailer Parking:	Build-to-suit
Zoning:	Limited Industrial (LI)



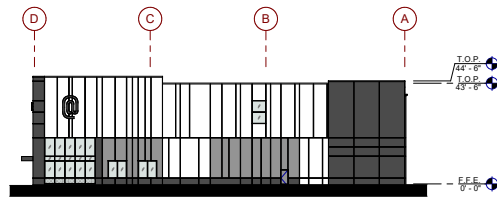
DRIVE TIME MAP



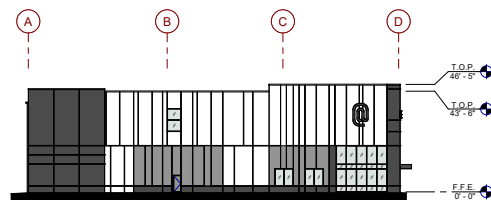
EXTERIOR ELEVATIONS



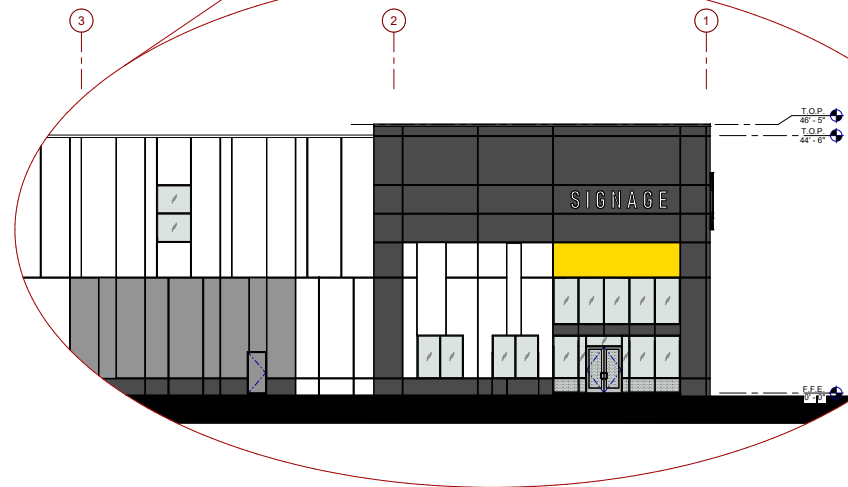
NORTH EXTERIOR ELEVATION
SCALE: 1" = 20'-0"



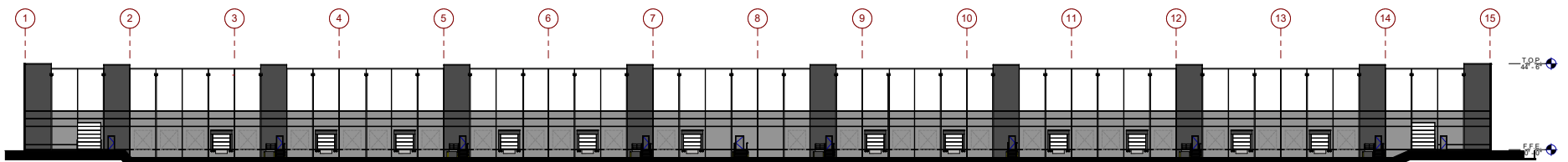
WEST EXTERIOR ELEVATION
SCALE: 1" = 20'-0"



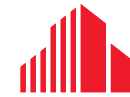
EAST EXTERIOR ELEVATION
SCALE: 1" = 20'-0"



ENLARGED NORTH EXTERIOR ELEVATION
SCALE: 1/8" = 1'-0"



SOUTH EXTERIOR ELEVATION
SCALE: 1" = 20'-0"



CUSHMAN &
WAKEFIELD

LUND
COMPANY



CONTACT

DENNY SCISCOE, SIOR, CCIM
Director of Industrial Services
+1 402 548 4051
denny.sciscoe@lundco.com

Independently Owned and Operated / A Member of the Cushman & Wakefield Alliance

©2025 Cushman & Wakefield. All rights reserved. The information contained in this communication is strictly confidential. This information has been obtained from sources believed to be reliable but has not been verified. NO WARRANTY OR REPRESENTATION, EXPRESS OR IMPLIED, IS MADE AS TO THE CONDITION OF THE PROPERTY (OR PROPERTIES) REFERENCED HEREIN OR AS TO THE ACCURACY OR COMPLETENESS OF THE INFORMATION CONTAINED HEREIN, AND SAME IS SUBMITTED SUBJECT TO ERRORS, OMISSIONS, CHANGE OF PRICE, RENTAL OR OTHER CONDITIONS, WITHDRAWAL WITHOUT NOTICE, AND TO ANY SPECIAL LISTING CONDITIONS IMPOSED BY THE PROPERTY OWNER(S). ANY PROJECTIONS, OPINIONS OR ESTIMATES ARE SUBJECT TO UNCERTAINTY AND DO NOT SIGNIFY CURRENT OR FUTURE PROPERTY PERFORMANCE.