

BERING/ZANKER BUSINESS PARK

±7,120 SF - ±9,816 SF AVAILABLE | SAN JOSE, CA



For more information, please contact:

Steve Pace
P +1 408 615 3419
steve.pace@cushwake.com
LIC #00817396

Dan Hollingsworth
P +1 408 615 3431
dan.hollingsworth@cushwake.com
LIC #01117716

Tiana Dampier
P +1 408 436 3680
tiana.dampier@cushwake.com
LIC #02191012


DOLLINGER PROPERTIES
DRE #02116818

 **CUSHMAN &
WAKEFIELD**

Current Availabilities

- 2365 Bering Dr: ±7,120 SF (Available 2/3/2026)
- 2343 Bering Dr: ±8,200 SF
- 2309 Bering Dr: ±9,816 SF

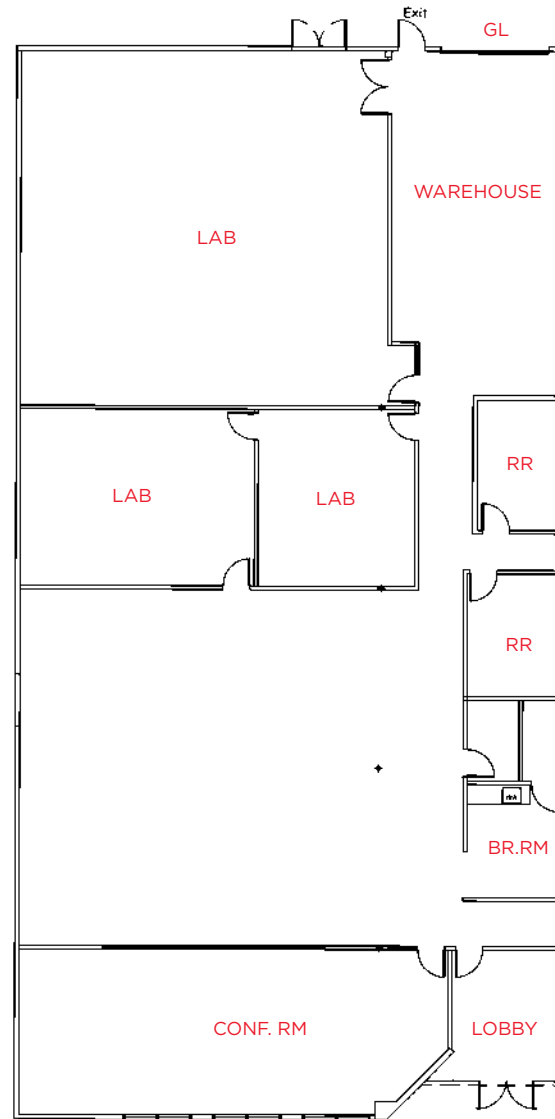
Highlights

- High Image North San Jose location
- 4/1,000 Parking
- Easy Access to Highways 101 & 880
- Walk to Light Rail Station
- Lab, Warehouse, Open Office, Privates and Conference Space



2365 BERING DRIVE | San Jose, California

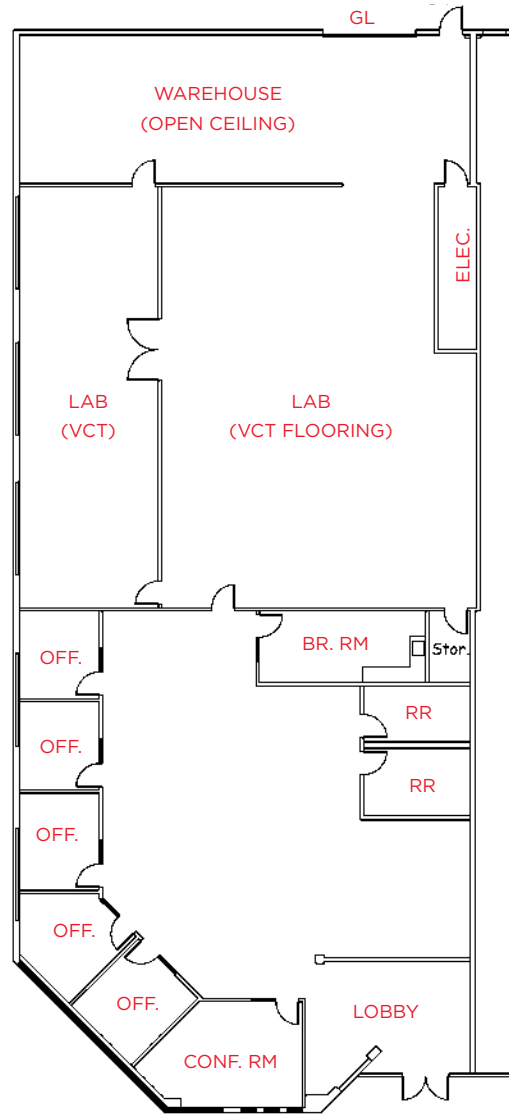
Floor Plan | $\pm 7,120$ SF
Available 2/3/2026



- **Power:**
1000 Amps 120/208 Volts 3 Phase 4 Wire
200 Amps 277/480 Volts 3 Phase 4 Wire
- **HVAC**
80 Tons HVAC
Of Which 60 Tons is Cooling Only
- **Description**
Conference Room, Labs, Break Room,
Warehouse, Grade Level Door

2343 BERING DRIVE | San Jose, California

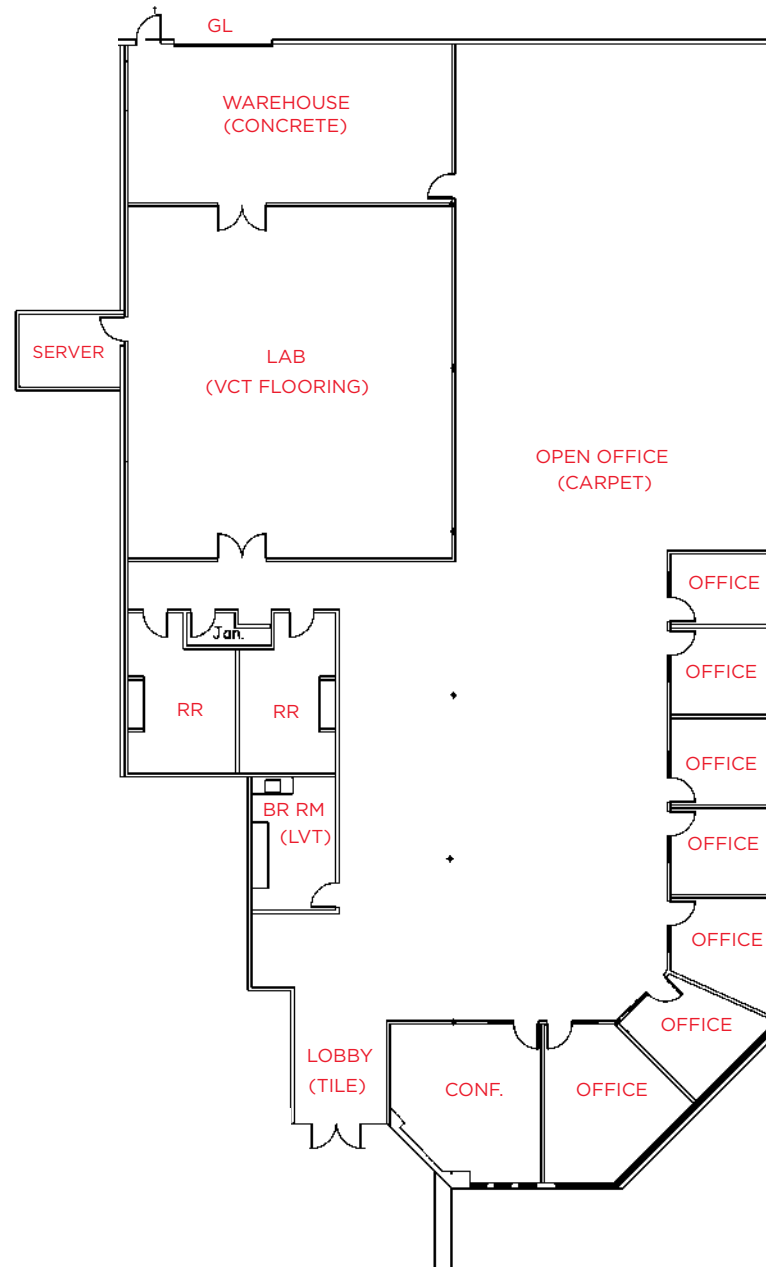
Floor Plan | ±8,200 SF



- **Power:**
400 Amps @ 480 Volts
- **HVAC**
42.5 Tons
- **Description**
Office, Privates & Open
Labs, VCT with Power
Warehouse, Open Ceiling,
Break Room, Grade
Level Door, End Unit

2309 BERING DRIVE | San Jose, California

Floor Plan | ±9,816 SF



- **Power:**
400 Amps @ 277/480 Volts
- **HVAC**
4 Units Totaling Approx.
50 Tons of Cooling
- **Description**
Reception, Perimeter
Privates, Large Lab Area,
Small Warehouse, Grade
Level Door, Shower

BERING / ZANKER BUSINESS PARK

San Jose, California

Public Transit and Amenities

