



SPACE FOR LEASE 21,378 SF

HIGHLAND INDUSTRIAL CENTER

2950 S. HIGHLAND DRIVE, SUITE C/D
LAS VEGAS, NV 89109



HIGHLAND INDUSTRIAL CENTER

2950 S. HIGHLAND DRIVE, SUITE C/D | LAS VEGAS, NV 89109

Highland Industrial Center is a ±238,935 square foot project comprised of five (5) industrial buildings, conveniently located minutes from the Las Vegas Strip with easy access to I-15 freeway via Sahara Avenue and the Spring Mountain Interchange. Within miles of the Harry Reid International Airport, Allegiant Stadium and the 215 freeway.



Space Available:	±21,378 SF
------------------	------------

Est. NNN Expenses:	\$0.19 PSF
--------------------	------------

Office:	±2,600 SF
---------	-----------

Clear Height:	20'
---------------	-----

Grade Level Loading:	2
----------------------	---

Parking:	Ample Parking
----------	---------------

Single & 3-Phase Power:	200 Amps, Single Phase 800 Amps, 3-Phase
-------------------------	---

Sprinklers:	0.21 gpm/1,500 SF
-------------	-------------------

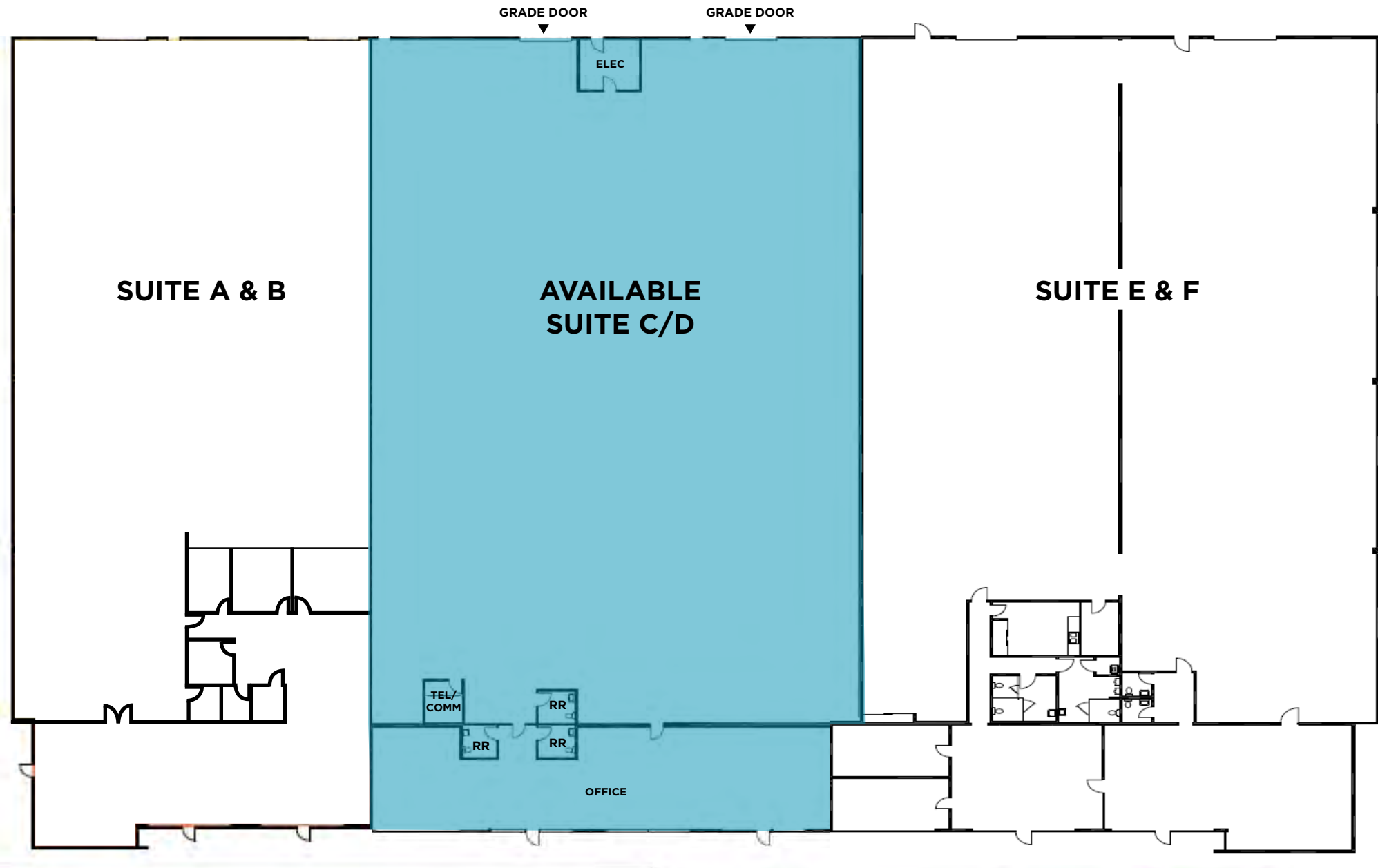
Lighting:	LED
-----------	-----

Warehouse:	White Box
------------	-----------

Zoning:	M (Industrial District)
---------	-------------------------

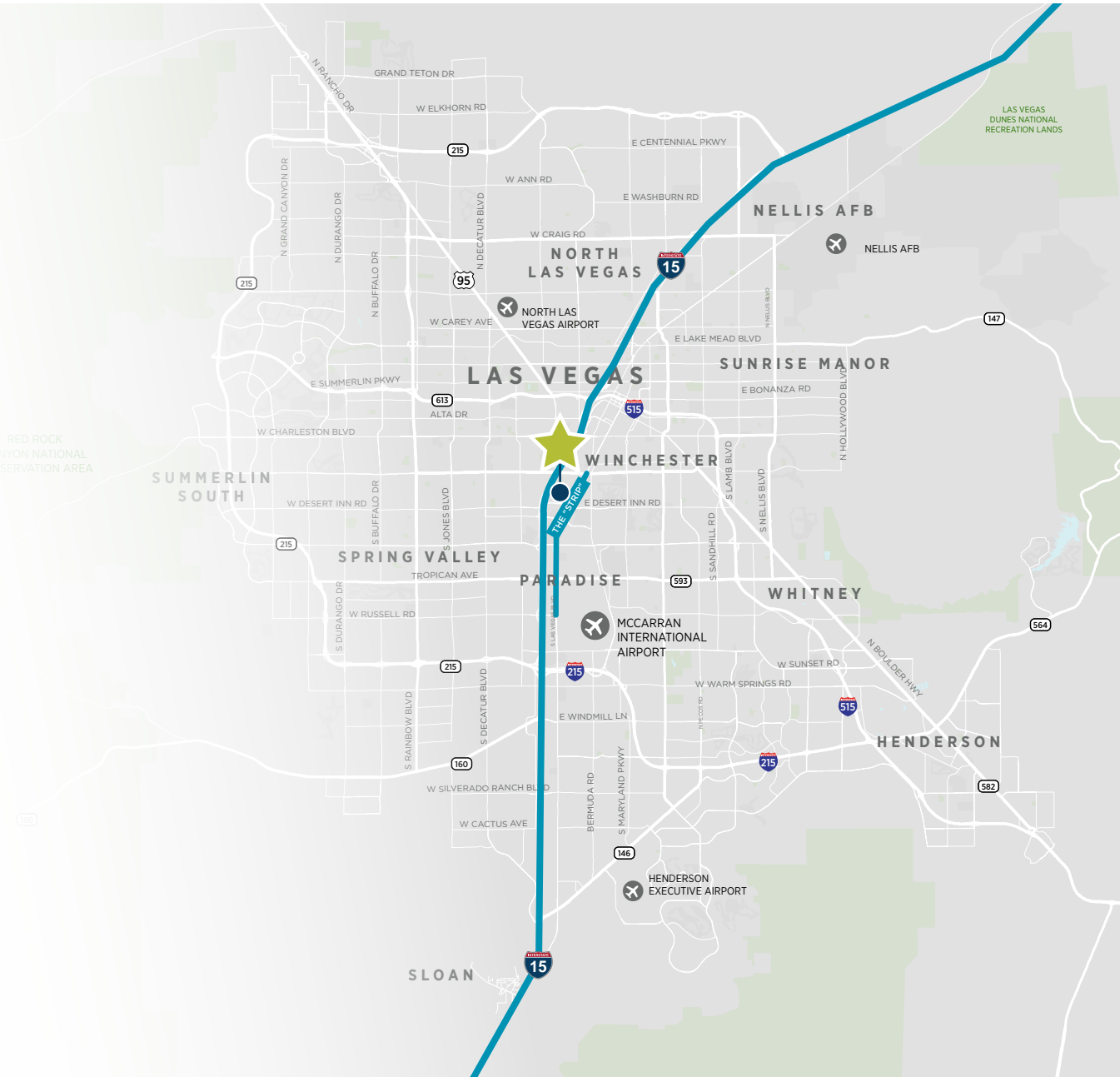
HIGHLAND INDUSTRIAL CENTER

2950 S. HIGHLAND DRIVE, SUITE C/D | LAS VEGAS, NV 89109



HIGHLAND INDUSTRIAL CENTER

2950 S. HIGHLAND DRIVE, SUITE C/D | LAS VEGAS, NV 89109





FOR MORE INFORMATION, CONTACT:

NICK ABRAHAM

Director
+1 702 605 1620
nick.abraham@cushwake.com

DONNA ALDERSON, SIOR

Executive Managing Director
+1 702 605 1692
donna.alderson@cushwake.com

©2021 Cushman & Wakefield. All rights reserved. The material in this presentation has been prepared solely for information purposes, and is strictly confidential. Any disclosure, use, copying or circulation of this presentation (or the information contained within it) is strictly prohibited, unless you have obtained Cushman & Wakefield's prior written consent. The views expressed in this presentation are the views of the author and do not necessarily reflect the views of Cushman & Wakefield. Neither this presentation nor any part of it shall form the basis of, or be relied upon in connection with any offer, or act as an inducement to enter into any contract or commitment whatsoever. NO REPRESENTATION OR WARRANTY IS GIVEN, EXPRESS OR IMPLIED, AS TO THE ACCURACY OF THE INFORMATION CONTAINED WITHIN THIS PRESENTATION, AND CUSHMAN & WAKEFIELD IS UNDER NO OBLIGATION TO SUBSEQUENTLY CORRECT IT IN THE EVENT OF ERRORS.

