

FOR SUBLEASE
1,800 SF

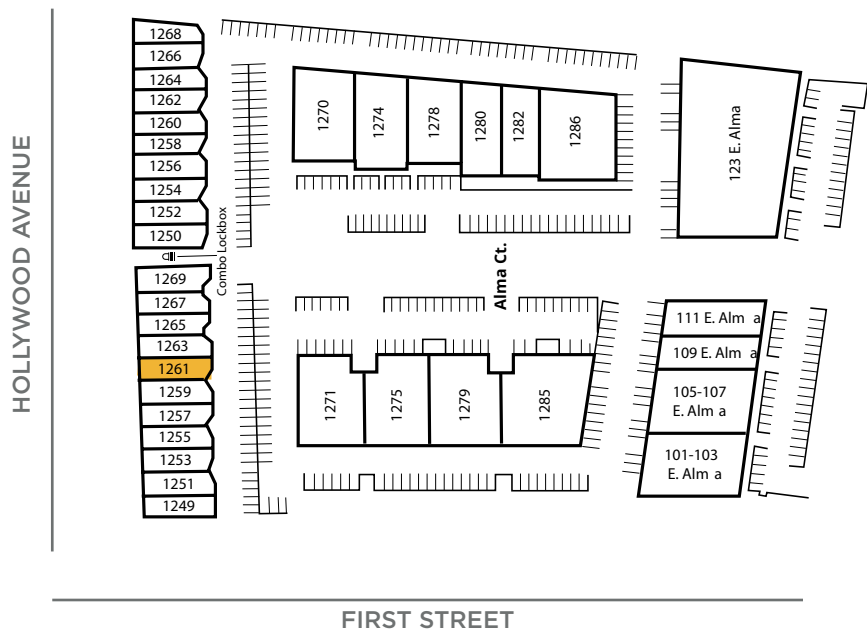


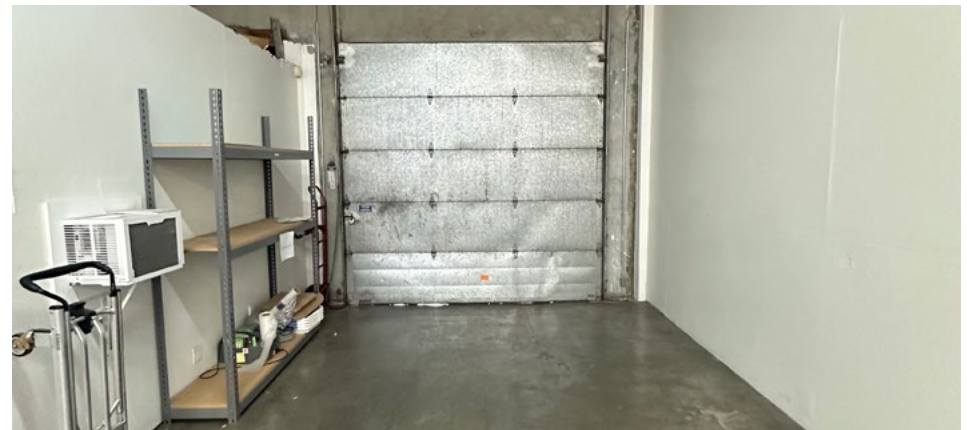
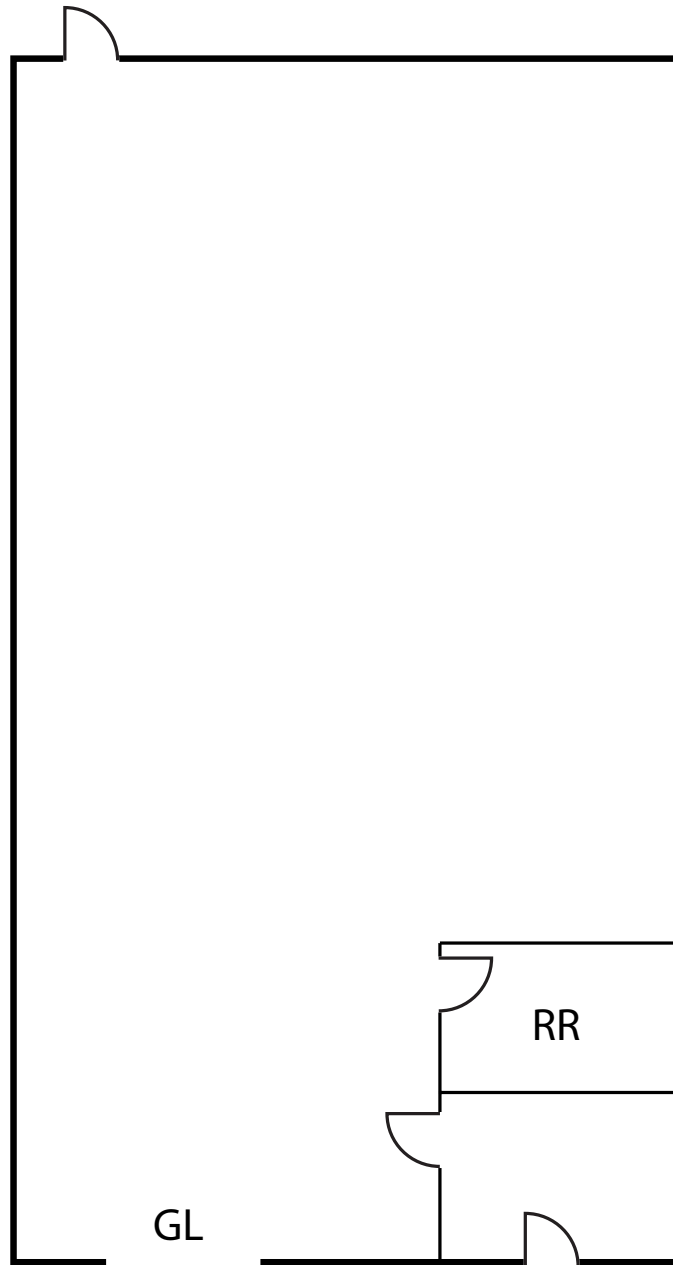
1251 ALMA COURT
SAN JOSE, CA

1251 ALMA COURT | SAN JOSE, CA

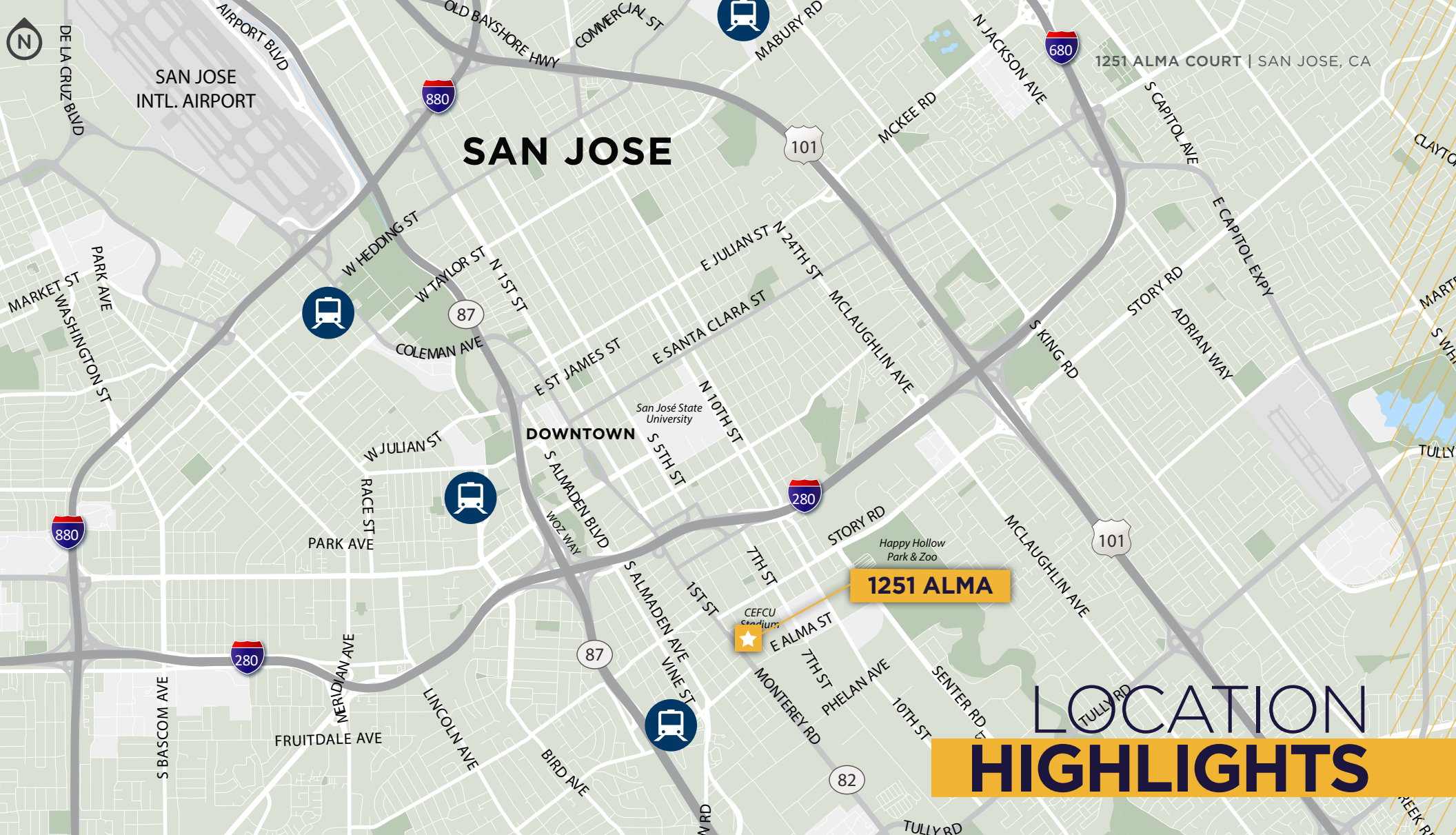
PROPERTY HIGHLIGHTS

Size:	±1,800 SF
Clear Height:	±14'
Loading:	(1) 10x10 Grade Level Door
Power:	100 Amps @ 208 Volts
LED:	February 28, 2029
Asking Rate:	\$1.80 Gross





FLOOR PLAN
±1,800 SF



CONTACT

JOE BRADY
Vice Chairman

joe.brady@cushwake.com
+1 408 799 2259
Lic. #01394602

