

VALLEY VIEW BUSINESS CENTER

6280 S VALLEY VIEW BLVD | SUITE 600/602

LAS VEGAS, NV 89139



± 3,866 SF FOR SUBLEASE

± 2,474 OFFICE SF / ± 1,392 WAREHOUSE SF



**CUSHMAN &
WAKEFIELD**

PROPERTY HIGHLIGHTS



6280 S Valley View Blvd is part of the Valley View Business Center, featuring modern industrial spaces with 20' foot clear height, grade-level loading, and 3-phase power.

Situated in the Southwest Submarket, the property provides quick access to I-15 and I-215 and is only minutes from Harry Reid International Airport and the Las Vegas Strip. The surrounding area includes major resorts, dining, and entertainment, making it a highly accessible and desirable business location.



20' FOOT
CLEAR HEIGHT



AMPLE PARKING
FOR TENANTS &
VISITORS



GRADE-LEVEL LOADING
PERFECT FOR EASY
ACCESS



PRIME LOCATION
NEAR I-15, I-215, &
THE STRIP



M-1 ZONING
IDEAL FOR LIGHT
INDUSTRIAL USE

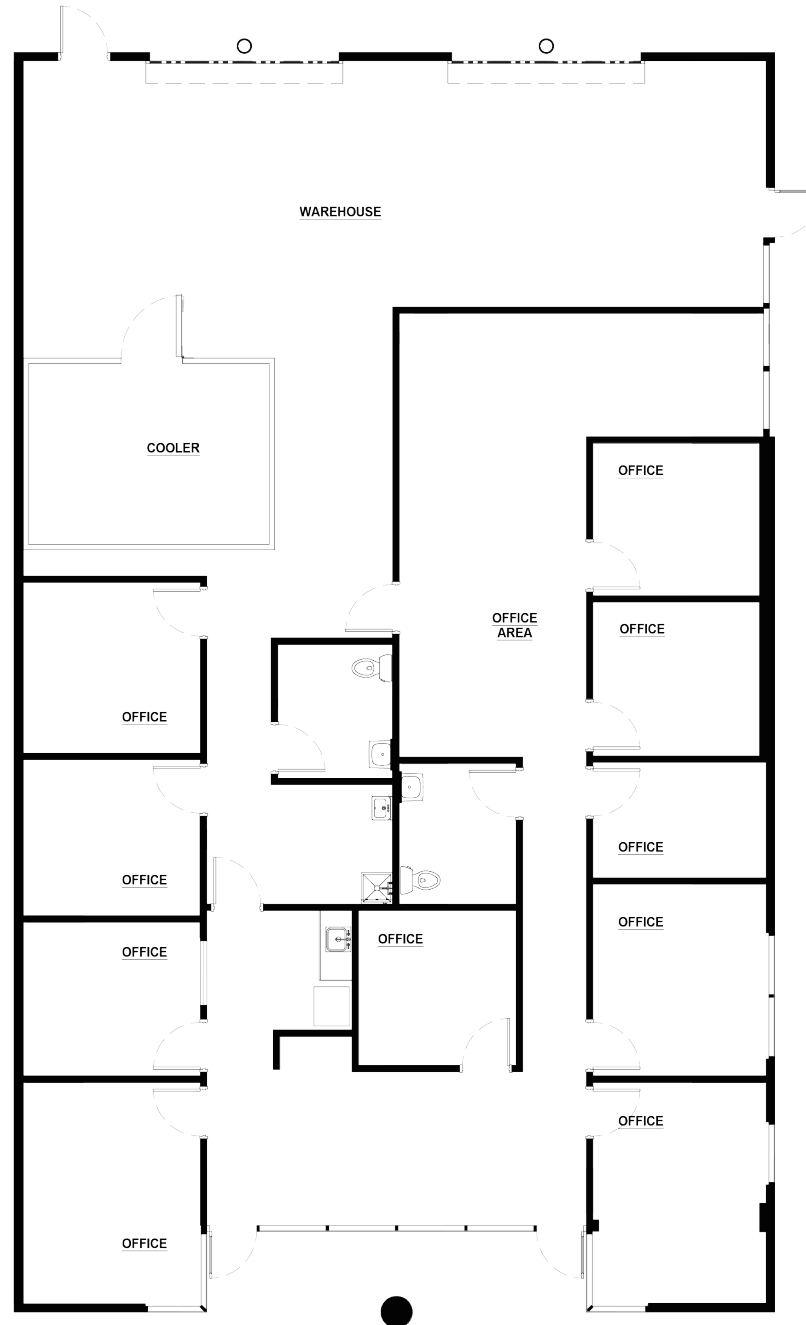


**MINUTES FROM HARRY
REID AIRPORT**
FOR CONVENIENT
LOGISTICS

PROPERTY IMAGES



PROPERTY SITE PLAN



○ GRADE-LEVEL DOOR

PROPERTY AERIAL MAP





ALMA CUEVAS, SIOR
Managing Director
+1 702 303 4412
alma.cuevas@cushwake.com
LIC #S.0180089

CAMILA ROSALES, CCIM
Director
+1 702 609 3567
camila.rosales@cushwake.com
LIC #S.0183916

JASON GRIFFIS, SIOR
Managing Director
+1 702 205 3861
jason.griffis@cushwake.com
LIC #S.0178374

MICHAEL SCHER
Senior Associate
+1 702 699 6893
michael.scher@cushwake.com
LIC #S.0189923