

R&D / FLEX SPACE FOR LEASE

1052-1054 COMMERCIAL STREET, SAN CARLOS, CA



PROPERTY HIGHLIGHTS

- 11,100 SF Total
- Fully Sprinklered
- Sky Lights Throughout
- 100% HVAC
- Gated/Secured Complex
- Power: 400 Amps, 277/480V, 3 Phase
- 2 Grade Level Doors (14' Height)
- R&D / Flex Space for Lease
- 2/1000 Parking Ratio
- Great Location
 - 0.5 Miles to Caltrain Station
 - 0.2 Miles to Amenity Rich Laurel Street

For information, please contact:

JAY LESLIE
Executive Director
Telephone +1 650 576 2888
jay.leslie@cushwake.com
CA RE LIC. #01244555

1350 Old Bayshore Hwy., Ste 900
Burlingame, CA 94010
cushmanwakefield.com

R&D / FLEX SPACE FOR LEASE

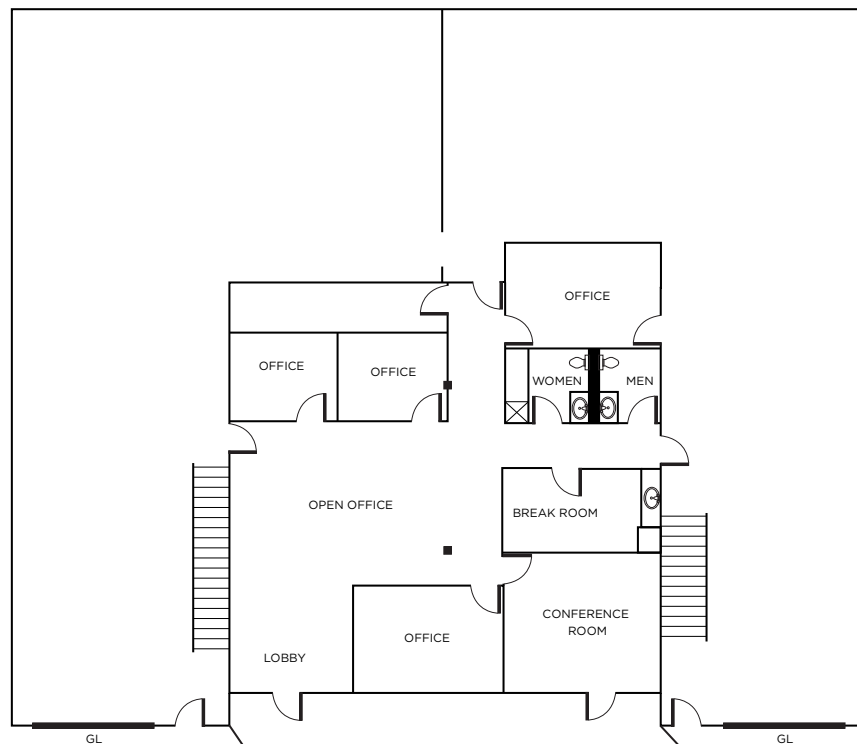
1052-1054 COMMERCIAL STREET, SAN CARLOS, CA



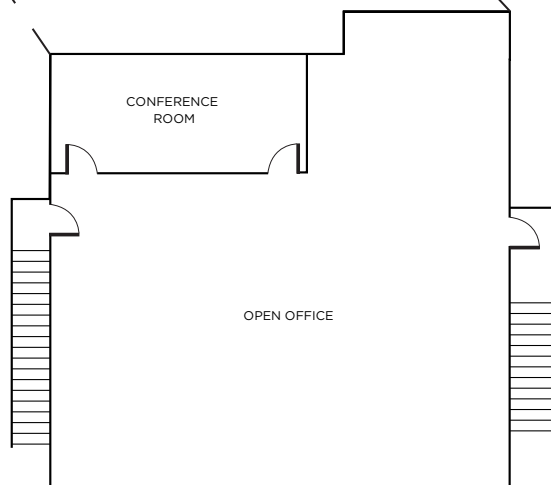
FLOOR PLAN

GROUND FLOOR

1052-1054
(±11,100 SF TOTAL)



SECOND FLOOR



R&D / FLEX SPACE FOR LEASE

1052-1054 COMMERCIAL STREET, SAN CARLOS, CA



LOCATION AND AMENITIES



R&D / FLEX SPACE FOR LEASE

1052-1054 COMMERCIAL STREET, SAN CARLOS, CA



For information, please contact:

JAY LESLIE
Executive Director
Telephone +1 650 576 2888
jay.leslie@cushwake.com
CA RE LIC. #01244555

1350 Old Bayshore Hwy., Ste. 900
Burlingame, CA 94010
cushmanwakefield.com

©2025 Cushman & Wakefield. All rights reserved. The information contained in this communication is strictly confidential. This information has been obtained from sources believed to be reliable but has not been verified. NO WARRANTY OR REPRESENTATION, EXPRESS OR IMPLIED, IS MADE AS TO THE CONDITION OF THE PROPERTY (OR PROPERTIES) REFERENCED HEREIN OR AS TO THE ACCURACY OR COMPLETENESS OF THE INFORMATION CONTAINED HEREIN, AND SAME IS SUBMITTED SUBJECT TO ERRORS, OMISSIONS, CHANGE OF PRICE, RENTAL OR OTHER CONDITIONS, WITHDRAWAL WITHOUT NOTICE, AND TO ANY SPECIAL LISTING CONDITIONS IMPOSED BY THE PROPERTY OWNER(S). ANY PROJECTIONS, OPINIONS OR ESTIMATES ARE SUBJECT TO UNCERTAINTY AND DO NOT SIGNIFY CURRENT OR FUTURE PROPERTY PERFORMANCE.