

FOR LEASE

# REGISTRY BUILDING



CUSHMAN &  
WAKEFIELD

14800 SAN PEDRO AVENUE  
SAN ANTONIO, TEXAS 78232



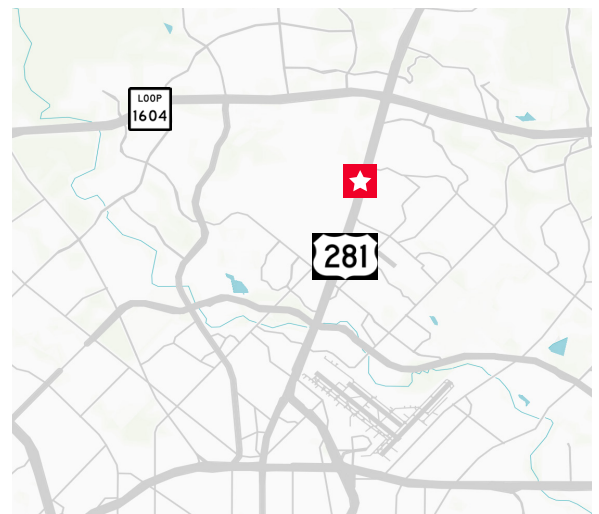
## PROPERTY HIGHLIGHTS

The Registry Building is a Class A Office space located in North Central San Antonio With immediate ingress and egress to Highway 281 and close proximity to Wurzbach Parkway and Loop 1604. This prime location offers access to restaurants, retails, banking and hotels.

**RENTAL RATE**      \$24.00/RSF

## BUILDING FEATURES

- Attractive, three-story, 43,353 RSF brick garden office building in San Antonio's North Central submarket on an oak tree studded lot
- On-site property management
- Janitorial service five nights per week
- Class A office finishes
- 24-hour building access, key card access after hours
- Parking Ratio of 4/1,000 SF
- 3,054 total SF available



FOR LEASE

# REGISTRY BUILDING



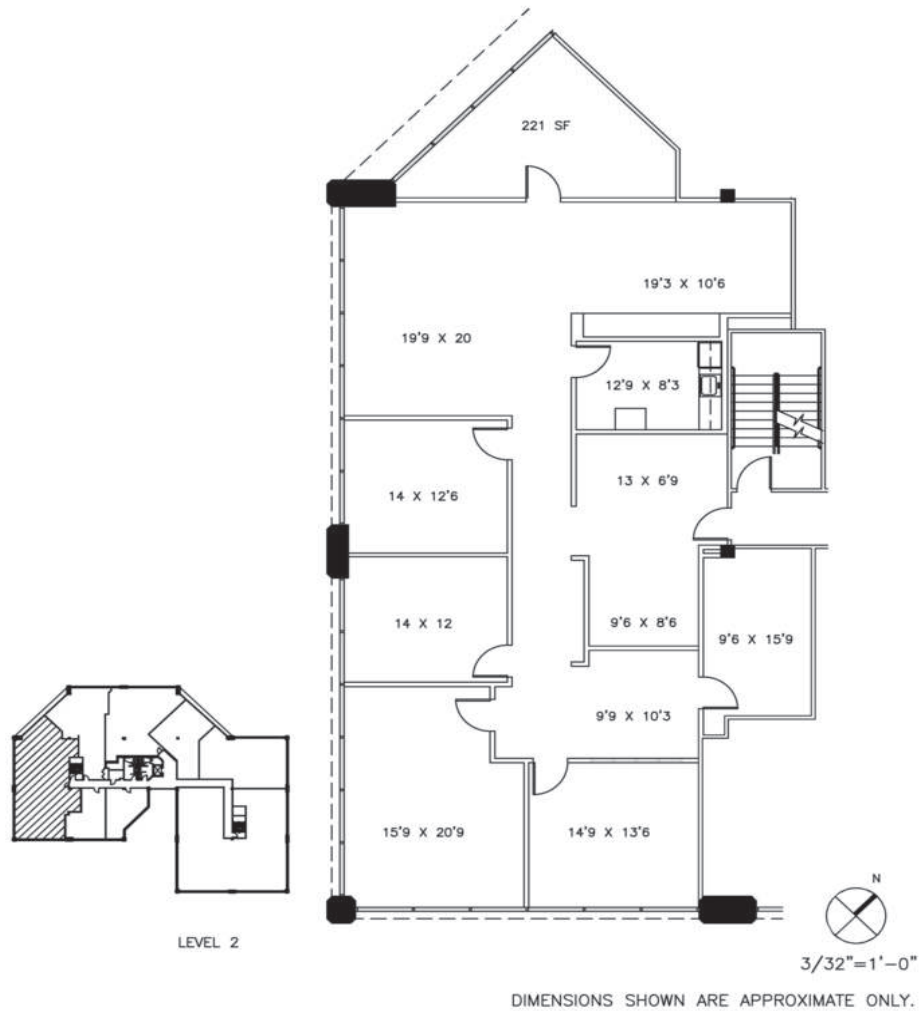
CUSHMAN &  
WAKEFIELD

14800 SAN PEDRO AVENUE  
SAN ANTONIO, TEXAS 78232



## FLOOR PLAN

Suite 216 - 3,054 SF



For more information, please contact:

**Bryan Sethney**  
**Managing Director**  
+1 210 305 4280  
bryan.sethney@cushwake.com

4040 Broadway Street  
Suite 602  
San Antonio, Texas 78209

[cushmanwakefield.com](http://cushmanwakefield.com)