



10960-10984 HARRY WATANABE PARKWAY  
LA VISTA, NE 68128

# Brook Valley Corporate Park

16,000 RSF | FOR LEASE



 CUSHMAN & WAKEFIELD |  LUND  
COMPANY



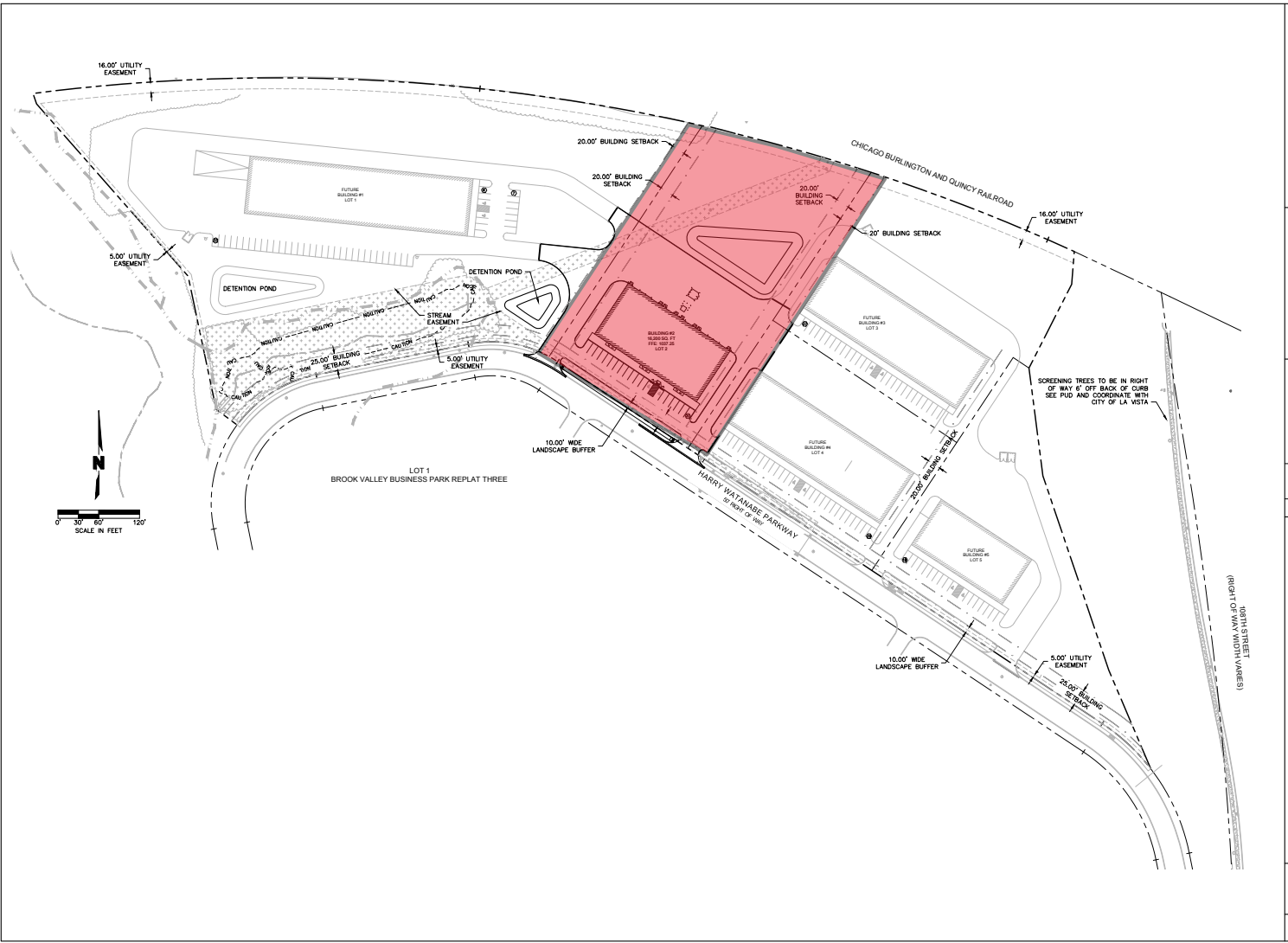
# Property Description

High quality flex space located in Sarpy West Industrial submarket. I-80 access within one mile on busy 108th & Giles intersection. Includes six drive-in doors, LED lighting, and 24' clear height.

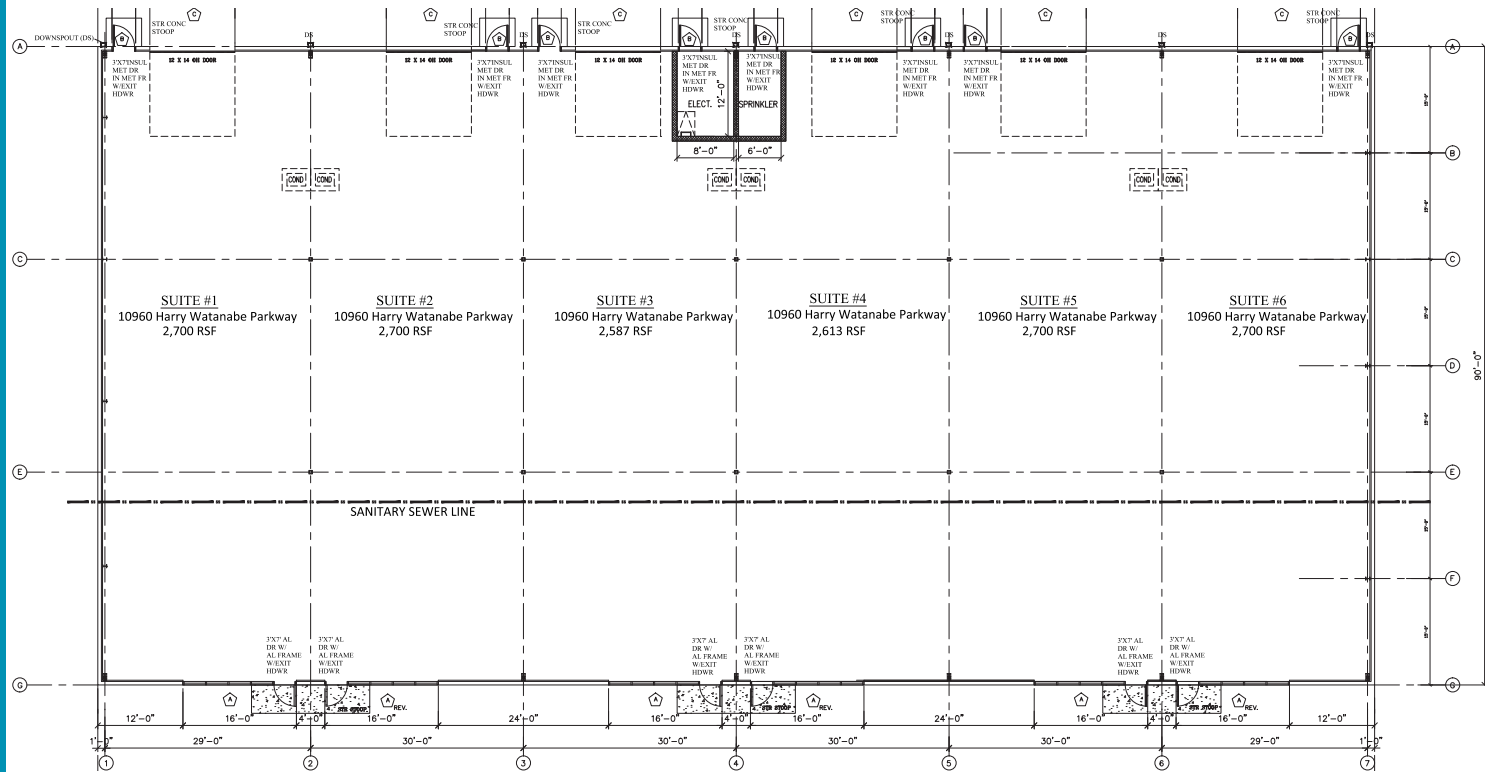
Rental Rate	\$11.95 PSF NNN
Building Size	16,000 SF
Total Available	16,000 SF
Year Built	2021
Construction	Pre-engineered metal
Clearance Height	24'
Column Spacing	30' x 30'
Power	480V 3-phase   280/120V 3-phase
Zoning	I-2
Drive-In Doors	6 total (12' x 14')
Fire suppressant	Yes



# SITE PLAN



# FLOOR PLAN





# PHOTOS





## Denny Sciscoe, SIOR, CCIM

Director of Industrial Services  
+1 402 548 4051  
denny.sciscoe@lundco.com

## Christian Jensen

Associate  
+1 402 584 4013  
christian.jensen@lundco.com

## Zach Sciscoe

Associate  
+1 402 957 5388  
zach.sciscoe@lundco.com

