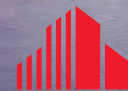


FOR LEASE

WESTPORT BUSINESS PARK

6925 PORTWEST DR. | SUITE 110

3,198 - 9,308 SF OFFICE SPACE AVAILABLE



**CUSHMAN &
WAKEFIELD**

J A Billipp Company
Commercial and Industrial Real Estate
Development and Investment

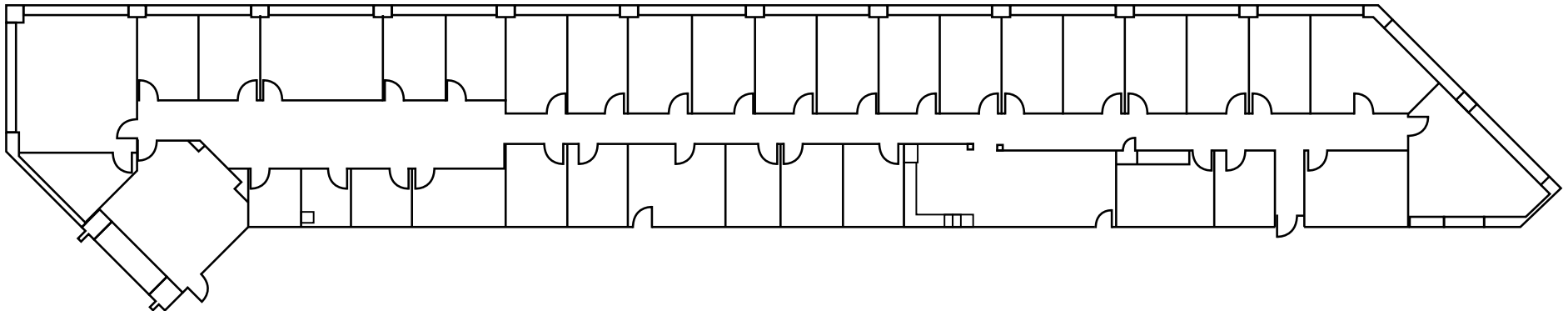
WESTPORT BUSINESS PARK

6925 Portwest Dr. | Suite 110

PROPERTY HIGHLIGHTS

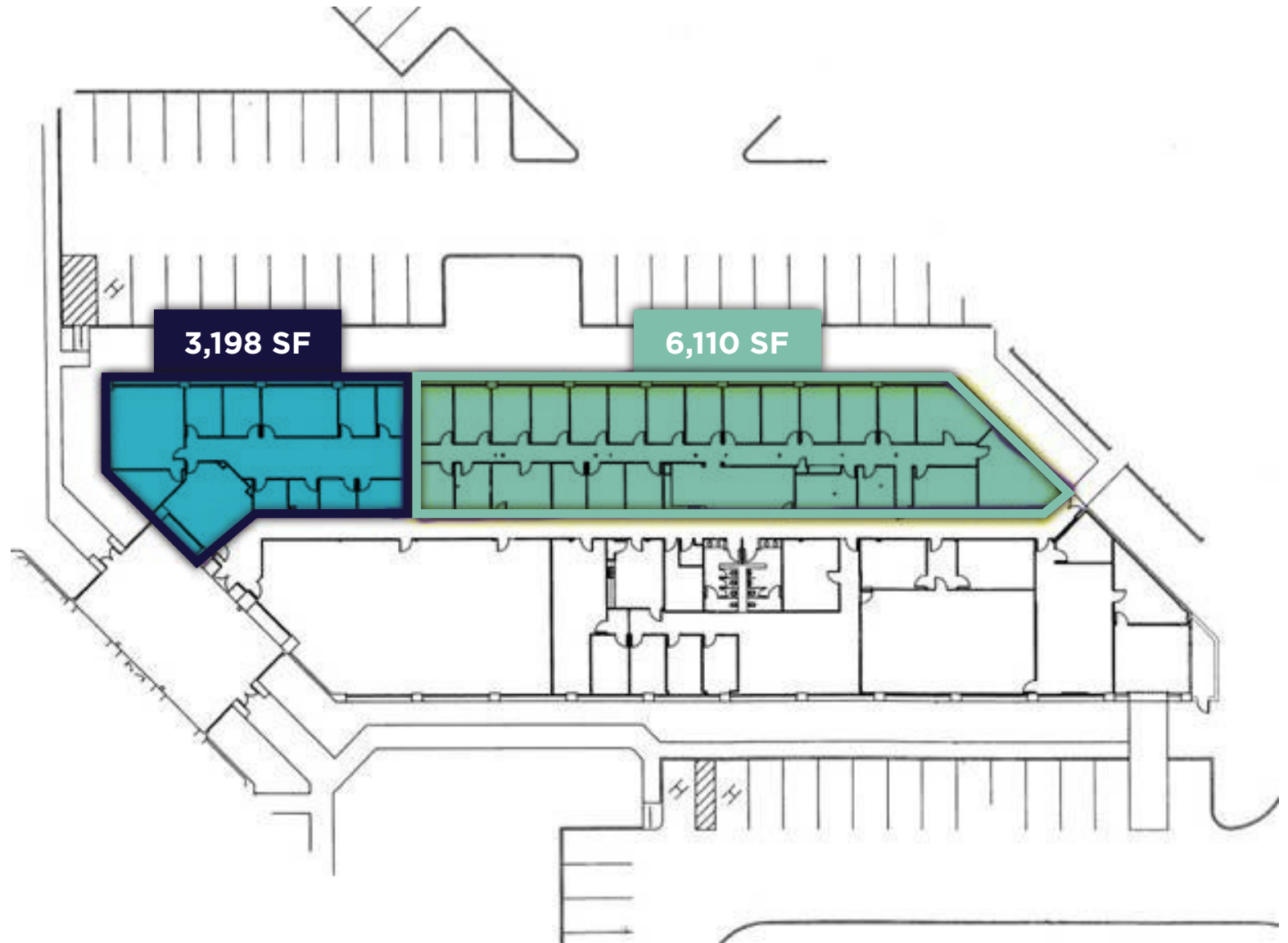
Located in Westport Business Park – just inside the 610 Loop, south of Old Katy Road, with direct access to I-10 and the 610 Loop (both directions)

- 3,198 – 9,308 SF available
- Surface and covered parking
- Monument signage (included)
- On-site property management
- Contact broker for pricing



WESTPORT BUSINESS PARK

6925 Portwest Dr. | Suite 110



WESTPORT BUSINESS PARK

6925 Portwest Dr. | Suite 110

LOCATION
AERIAL



6925 PORTWEST DR.
SUITE 110



WESTPORT BUSINESS PARK

6925 Portwest Dr. | Suite 110

LOCATION MAP





FOR MORE INFORMATION, CONTACT:

MICHAEL FOREMAN

+1 713 963 2850

michael.foreman@cushwake.com

IRYNA FALYK

+1 713 260 0226

iryna.falyk@cushwake.com



**CUSHMAN &
WAKEFIELD**

J A Billipp Company
*Commercial and Industrial Real Estate
Development and Investment*

©2025 Cushman & Wakefield. All rights reserved. The information contained in this communication is strictly confidential. This information has been obtained from sources believed to be reliable but has not been verified. NO WARRANTY OR REPRESENTATION, EXPRESS OR IMPLIED, IS MADE AS TO THE CONDITION OF THE PROPERTY (OR PROPERTIES) REFERENCED HEREIN OR AS TO THE ACCURACY OR COMPLETENESS OF THE INFORMATION CONTAINED HEREIN, AND SAME IS SUBMITTED SUBJECT TO ERRORS, OMISSIONS, CHANGE OF PRICE, RENTAL OR OTHER CONDITIONS, WITHDRAWAL WITHOUT NOTICE, AND TO ANY SPECIAL LISTING CONDITIONS IMPOSED BY THE PROPERTY OWNER(S). ANY PROJECTIONS, OPINIONS OR ESTIMATES ARE SUBJECT TO UNCERTAINTY AND DO NOT SIGNIFY CURRENT OR FUTURE PROPERTY PERFORMANCE.