

# 292 Adelaide Street West TORONTO, ON



SPACE AVAILABILITY SUMMARY

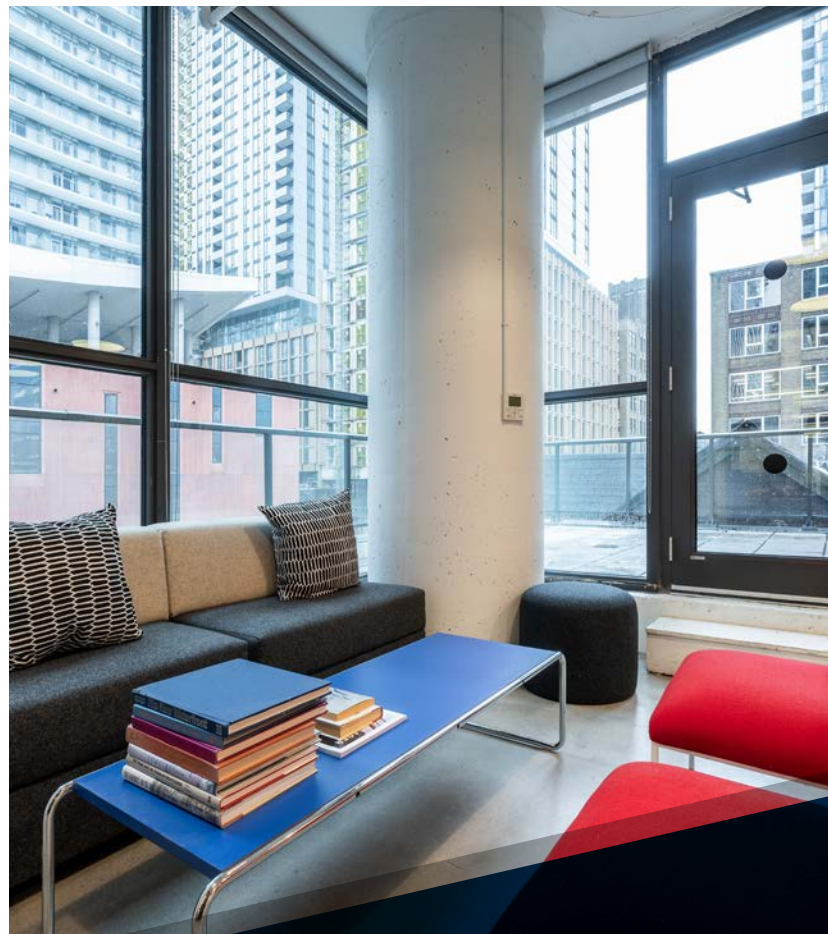


# 292 ADELAIDE STREET WEST

Contemporary  
elegance and prestige

292 Adelaide Street West is a modern gem that brings a taste of something new to the city's historic core. Built in 2018, this Class-A, six-story marvel brings a vibrant and innovative twist to the traditional office space with its natural design aesthetic and flexible floorplan. With its prime location in the heart of Old Toronto's Entertainment District, it's sure to be an asset for employees and companies alike.

Spread across four of the building's six floors, 13,741 square feet of office space provides neutral, versatile workspaces suited to any and all tastes. The open floor plan and careful design choices allow for connection, collaboration, and productivity in a relaxed, luxurious environment.



## Available Rentable Area

### Floor 5: **2,891 SF**

Includes 974 SF Terrace

- Availability: May 1, 2026
- Built-out with 2 meeting rooms, reception, kitchenette, lounge area, in-suite washrooms and 17 workstations
- Furniture included

### Floor 6: **2,823 SF**

- Built-out with 2 meeting rooms, reception, kitchenette, lounge area, in-suite washrooms and 22 workstations
- Furniture included

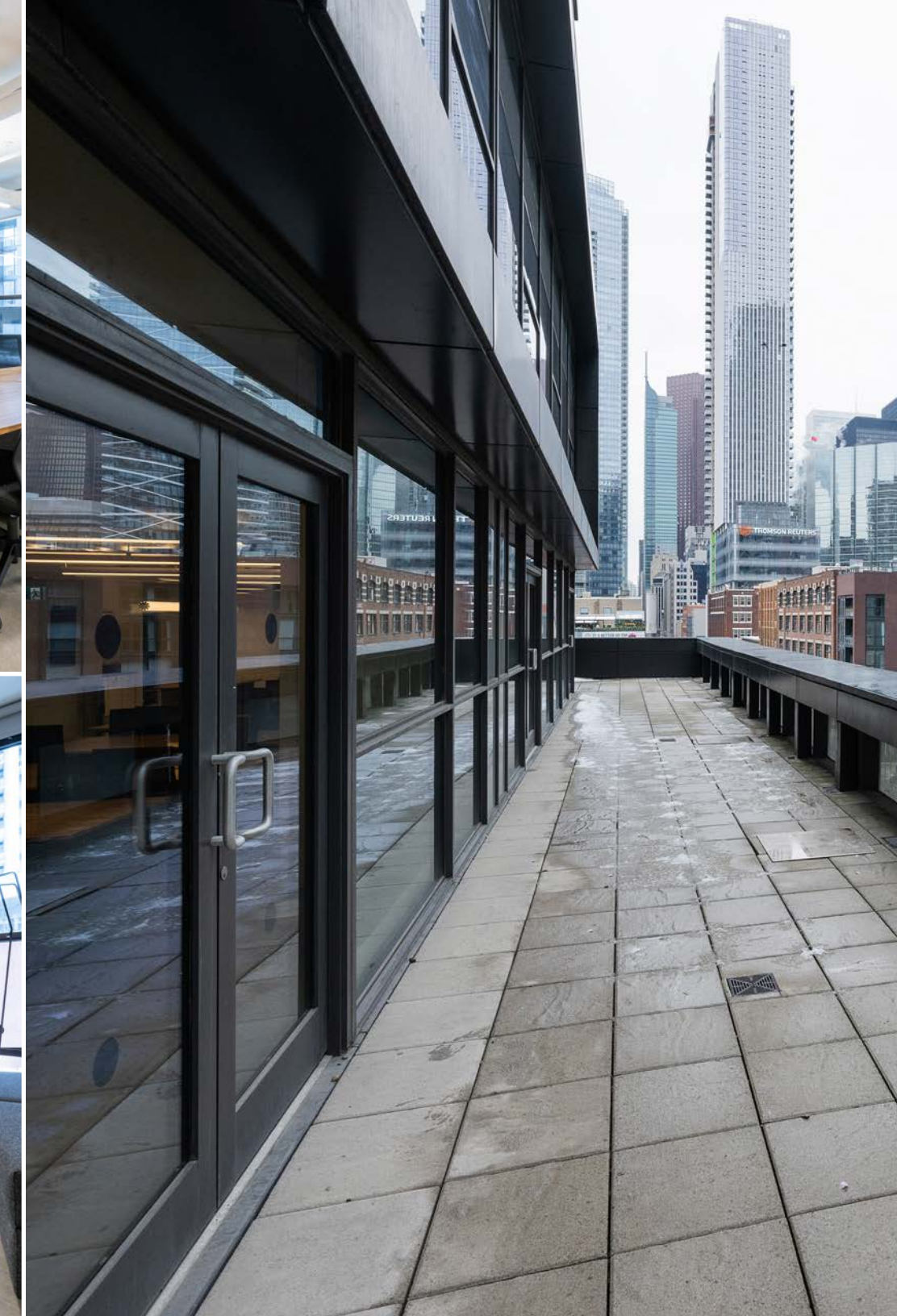
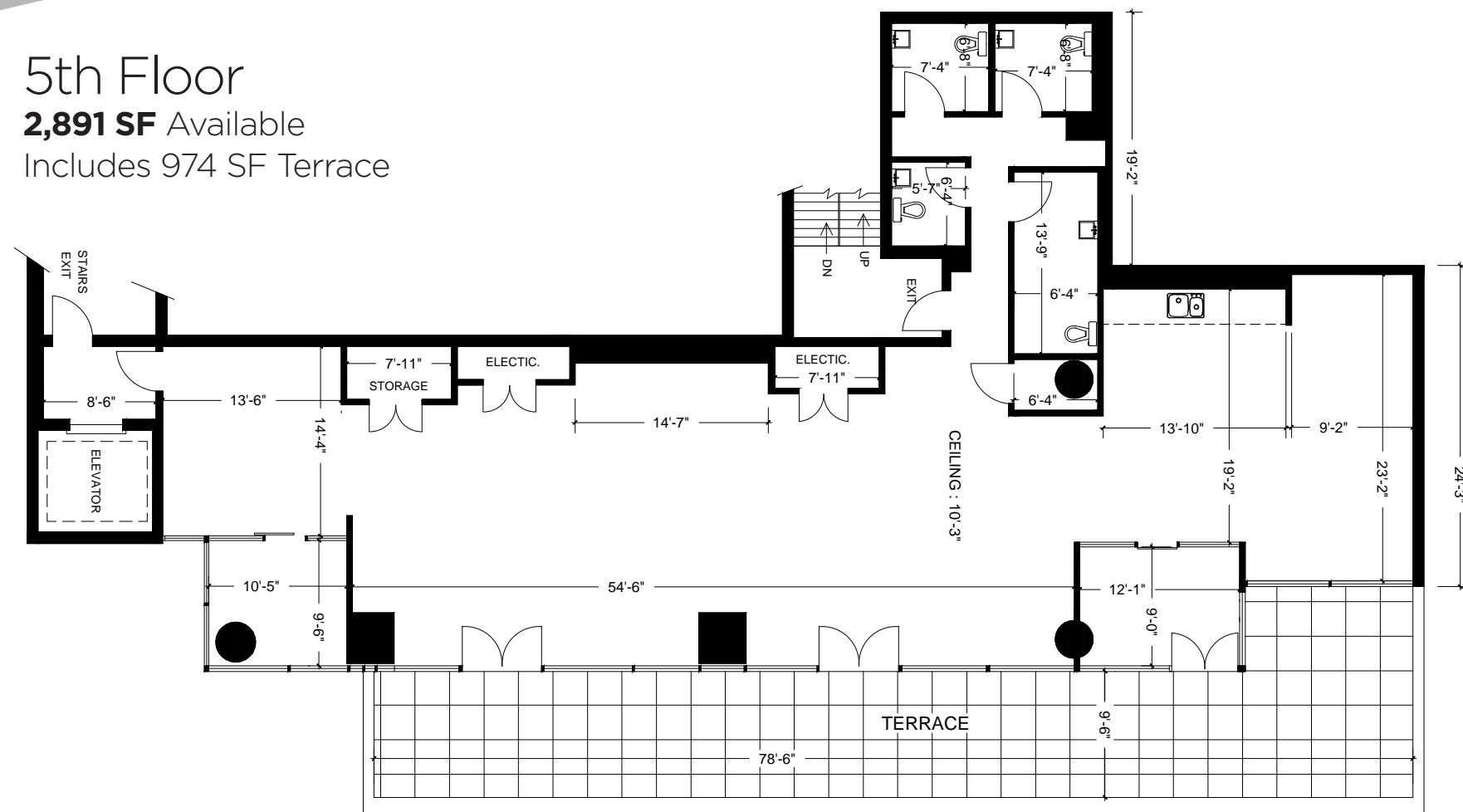
Additional Rent: **\$16.75 PSF (2025 Est.)**  
(includes utilities and excludes in-suite janitorial)

Co-op Commission: **\$2.00 PSF/Annum**

Abundant Underground Parking Available:  
\$265/month/unreserved spot  
\$375/month/reserved spot

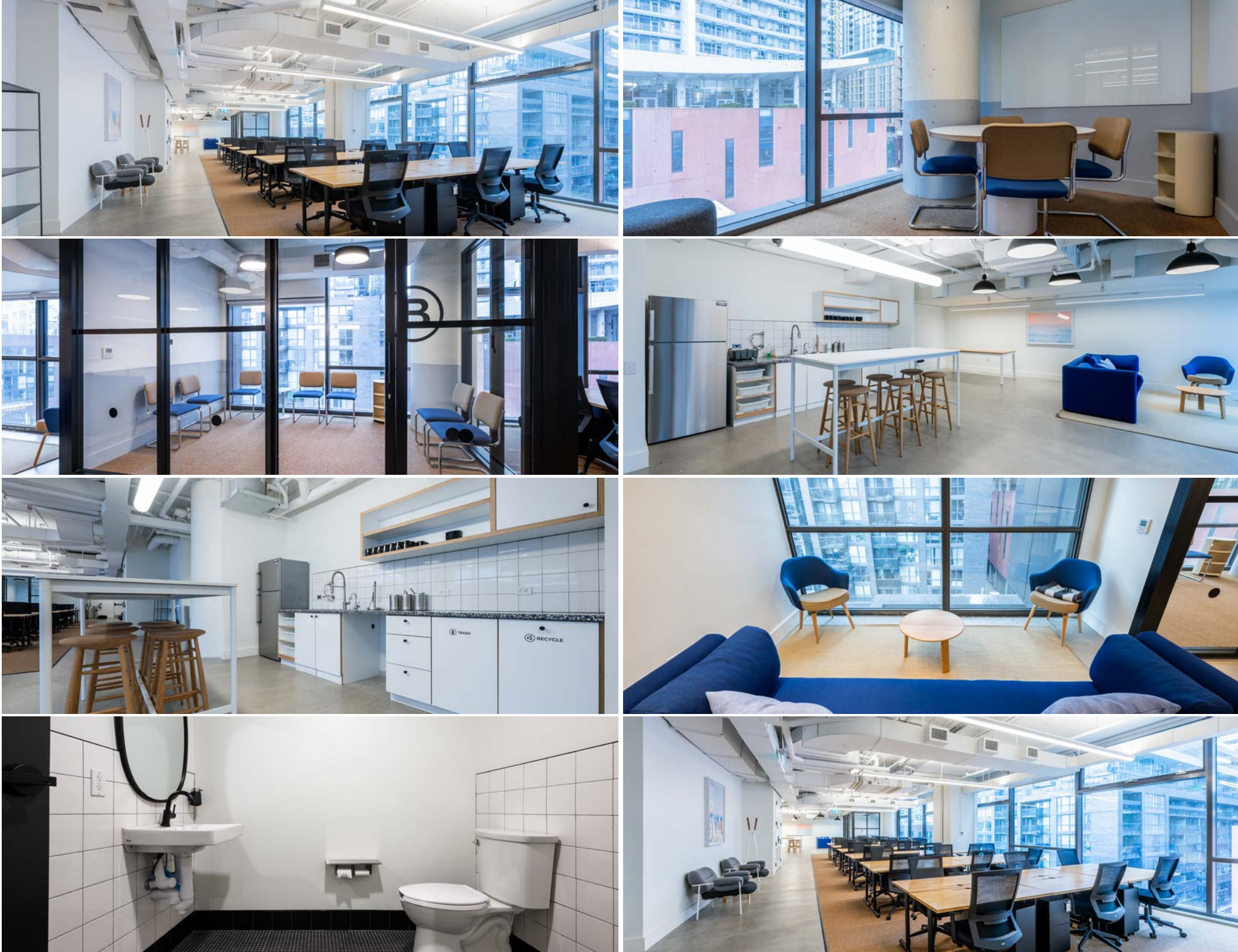
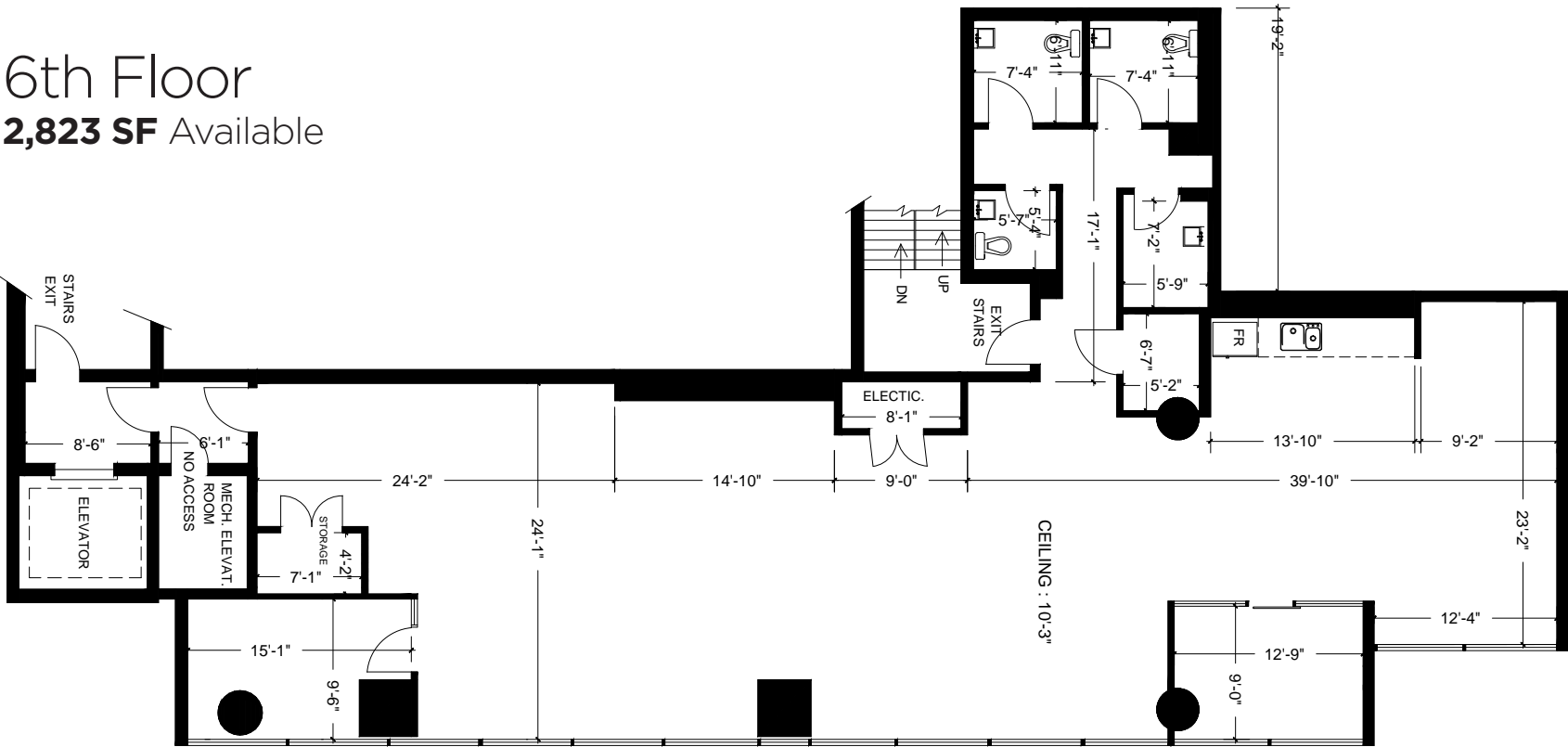


**2,891 SF** Available  
Includes 974 SF Terrace

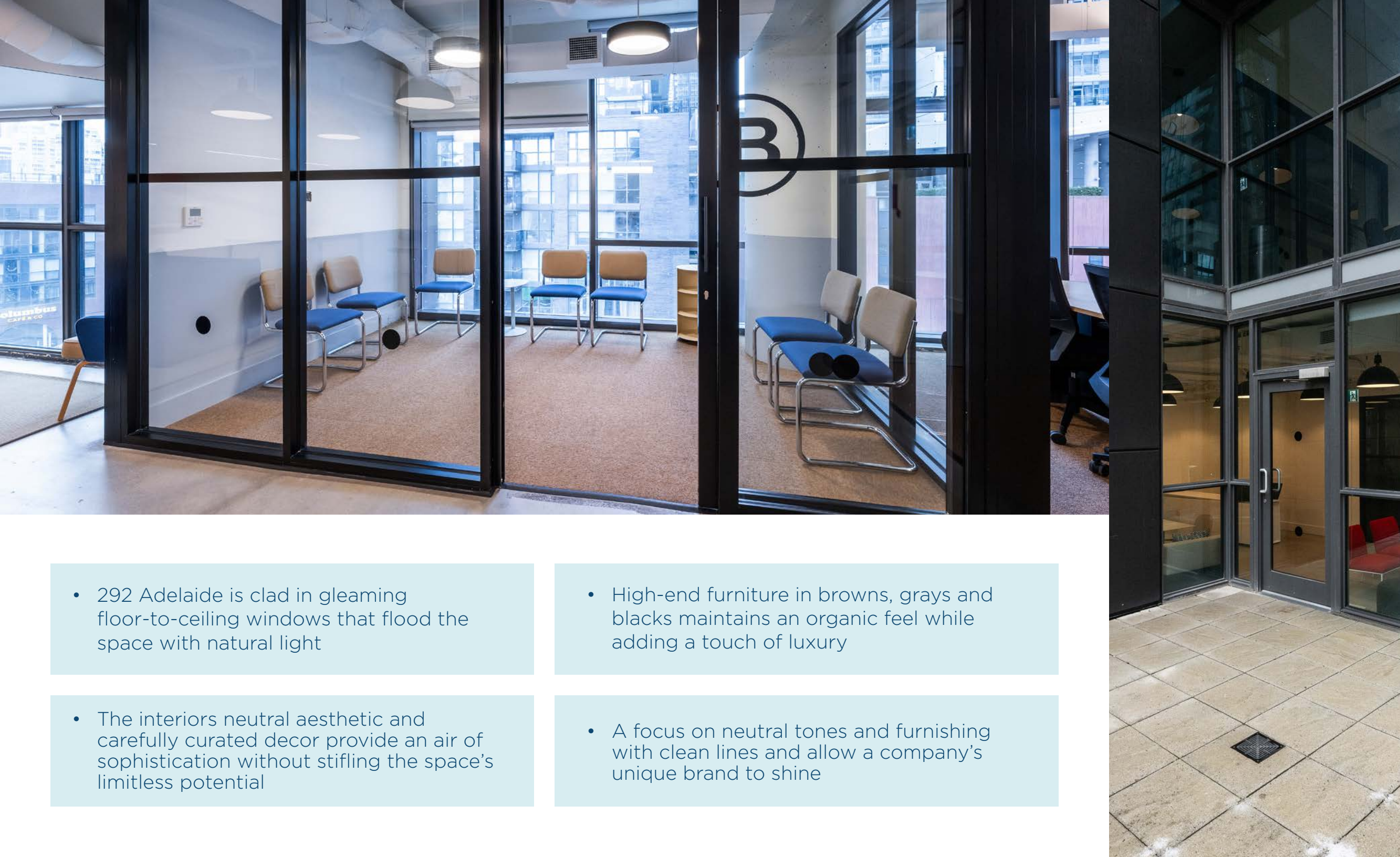




6th Floor  
2,823 SF Available







- 292 Adelaide is clad in gleaming floor-to-ceiling windows that flood the space with natural light

- High-end furniture in browns, grays and blacks maintains an organic feel while adding a touch of luxury

- The interiors neutral aesthetic and carefully curated decor provide an air of sophistication without stifling the space's limitless potential

- A focus on neutral tones and furnishing with clean lines and allow a company's unique brand to shine

## On-site Amenities

- Electronic keycard access
- Private meeting rooms
- Gender-neutral restrooms
- Dog-friendly spaces
- Access to car charging stations
- On-site parking
- Emergency back-up power
- Outdoor space

## Building Specifications



### Building History

Built in 2018  
Designed by BPD  
Developed by  
Lifetime Developments



### Elevators

1 passenger elevator  
with a capacity of 2200 lbs  
1 freight elevator  
(in adjacent residential building)  
with a capacity of 3300 lbs



### Building Size

6 stories  
27,810 SF



### Certifications

LEED Gold certified



### Ceiling Heights

12 feet slab-to-slab



### HVAC

Monday - Friday: 8am-5pm



### Fire Strategy

Fully-sprinklered floors





# 292 ADELAIDE STREET WEST

**Brendan Shea\***  
Senior Associate | Office Leasing  
+1 905 501 6426  
brendan.shea@cushwake.com

**Alan Rawn\***  
Senior Vice President | Office Leasing  
+1 416 359 2440  
alan.rawn@cushwake.com

**Lauren Luchini\***  
Associate Vice President | Office Leasing  
+1 416 359 2553  
lauren.luchini@cushwake.com

Cushman & Wakefield ULC, Brokerage | 161 Bay Street, Suite 1500 | Toronto ON M5J 2S1

©2025 Cushman & Wakefield ULC, Brokerage. All rights reserved. The information contained in this communication is strictly confidential. This information has been obtained from sources believed to be reliable but has not been verified. NO WARRANTY OR REPRESENTATION, EXPRESS OR IMPLIED, IS MADE AS TO THE CONDITION OF THE PROPERTY (OR PROPERTIES) REFERENCED HEREIN OR AS TO THE ACCURACY OR COMPLETENESS OF THE INFORMATION CONTAINED HEREIN, AND SAME IS SUBMITTED SUBJECT TO ERRORS, OMISSIONS, CHANGE OF PRICE, RENTAL OR OTHER CONDITIONS, WITHDRAWAL WITHOUT NOTICE, AND TO ANY SPECIAL LISTING CONDITIONS IMPOSED BY THE PROPERTY OWNER(S). ANY PROJECTIONS, OPINIONS OR ESTIMATES ARE SUBJECT TO UNCERTAINTY AND DO NOT SIGNIFY CURRENT OR FUTURE PROPERTY PERFORMANCE. \*\*Broker \*Sales representative

## Experience an entire city right at your doorstep

Accessing Old Toronto has never been easier. 292 Adelaide is a mere 8-minute drive from Exhibition Go and only an 11-minute drive from the Billy Bishop City Airport. Union Station and the Jack Layton Ferry Terminal are within walking distance, as is King Street West, where you'll find some of Toronto's trendiest and most upscale restaurants, shops, and more. Members frequent the Entertainment District's top attractions, including the Four Seasons Centre for Performing Arts, the Princess of Wales Theatre, and the TIFF Bell Lightbox.

### Distance from 292 Adelaide St W

King Street West	Walk	5 min
Jack Layton Ferry Terminal	Walk	8 min
Union Station	Walk	14 min
Billy Bishop City Airport	Drive	8 min
Exhibition Go	Drive	11 min