

FOR SALE

±1.78 Acres

Grand Blvd, Carmel, IN 46032



Carmel
Middle
School

Property Highlights

- ±1.78 acres
- Zoned UC
- Asking price \$1,500,000



Bo Leffel

Vice Chair

Direct +1 317 639 0441

bo.leffel@cushwake.com

One American Square, Suite 1800

Indianapolis, IN 46282 | USA

Main +1 317 634 6363

Fax +1 317 639 0504

cushmanwakefield.com

Cushman & Wakefield Copyright 2024. No warranty or representation, express or implied, is made to the accuracy or completeness of the information contained herein, and same is submitted subject to errors, omissions, change of price, rental or other conditions, withdrawal without notice, and to any special listing conditions imposed by the property owner(s). As applicable, we make no representation as to the condition of the property (or properties) in question.



**CUSHMAN &
WAKEFIELD**

FOR SALE

±1.78 Acres

Grand Blvd, Carmel, IN 46032

Aerial



Demographics

	1 Mile	3 Miles	5 Miles
Population	10,796	71,868	168,489
Average Household Income	\$128,560	\$182,592	\$178,514
Daytime Population (Age 16+)	13,191	70,585	150,839

2025 estimates. Source: Applied Geographic Solutions 5/2025, TIGER Geography

Traffic Counts

Old Meridian Street	10,010 VPD
---------------------	------------

Bo Leffel

Vice Chair

Direct +1 317 639 0441

bo.leffel@cushwake.com

One American Square, Suite 1800

Indianapolis, IN 46282 | USA

Main +1 317 634 6363

cushmanwakefield.com



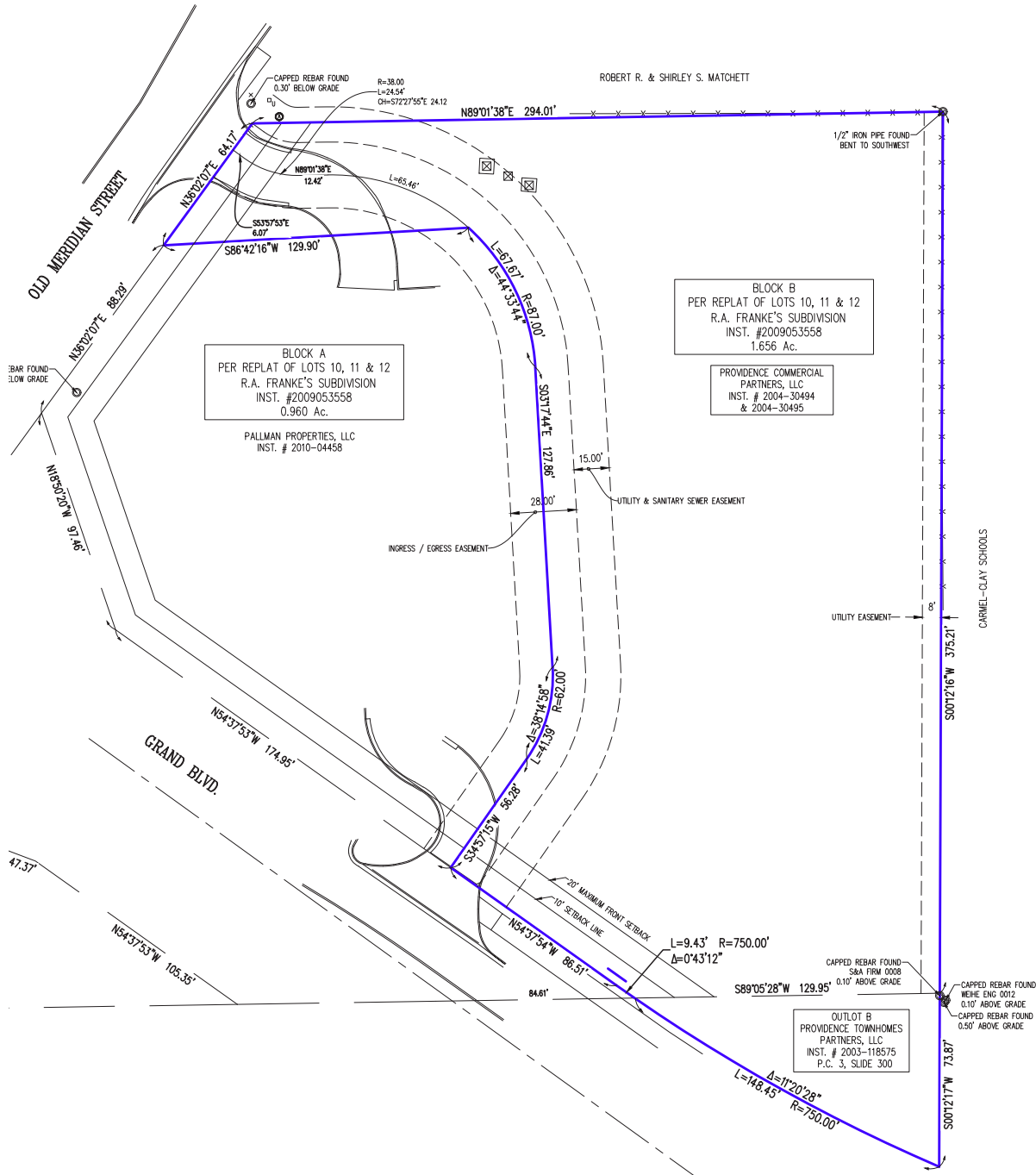
**CUSHMAN &
WAKEFIELD**

FOR SALE

±1.78 Acres

Grand Blvd, Carmel, IN 46032

Survey



Bo Leffel
Vice Chair
Direct +1 317 639 0441
bo.leffel@cushwake.com

One American Square, Suite 1800
Indianapolis, IN 46282 | USA
Main +1 317 634 6363
cushmanwakefield.com

Cushman & Wakefield Copyright 2017. No warranty or representation, express or implied, is made to the accuracy or completeness of the information contained herein, and same is submitted subject to errors, omissions, change of price, rental or other conditions, withdrawal without notice, and to any special listing conditions imposed by the property owner(s). As applicable, we make no representation as to the condition of the property (or properties) in question.