

**FOR SALE**  
**±27.87 acres**  
CR 525 E & 50 S | Franklin, Indiana



## PROPERTY HIGHLIGHTS

±27.87 acres  
Zoned Industrial  
Located in TIF district  
Good access to the interstate  
Additional acreage to the north available  
Asking \$60,000 an acre.



## Contact

BO LEFFEL  
Vice Chair  
+1 317 639 0441  
[bo.leffel@cushwake.com](mailto:bo.leffel@cushwake.com)

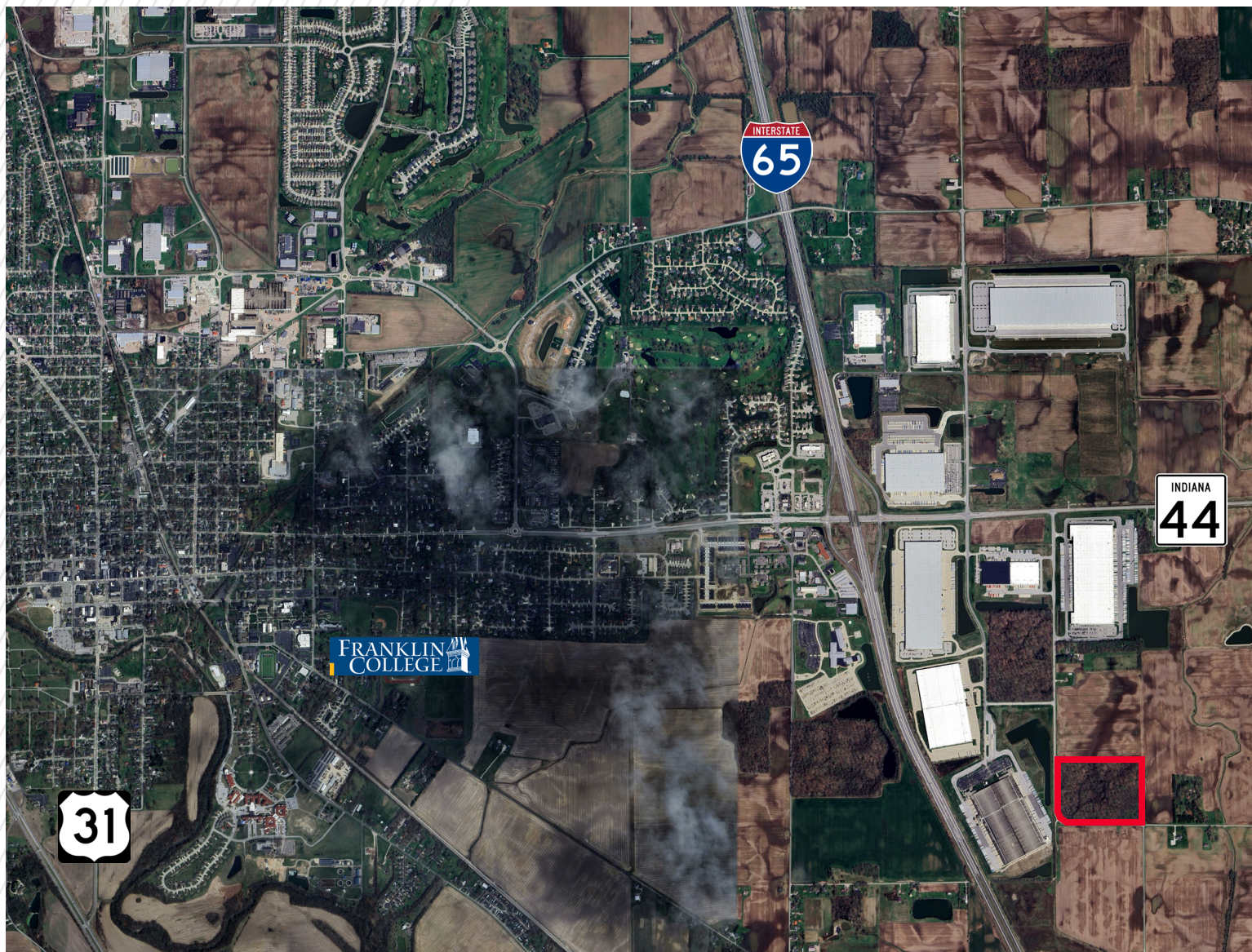
JOHN A. CRISP, SIOR  
Executive Managing Director  
+1 317 639 0468  
[john.crisp@cushwake.com](mailto:john.crisp@cushwake.com)

One American Square  
Suite 1800  
Indianapolis, IN 46282  
+1 317 639 0515

©2025 Cushman & Wakefield. All rights reserved. The information contained in this communication is strictly confidential. This information has been obtained from sources believed to be reliable but has not been verified. No warranty or representation, express or implied, is made as to the condition of the property (or properties) referenced herein or as to the accuracy or completeness of the information contained herein, and same is submitted subject to errors, omissions, change of price, rental or other conditions, withdrawal without notice, and to any special listing conditions imposed by the property owner(s). Any projections, opinions or estimates are subject to uncertainty and do not signify current or future property performance.



**FOR SALE**  
**±27.87 acres**  
CR 525 E & 50 S | Franklin, Indiana



## Demographics

	1 Mile	3 Mile	5 Mile
Population	109	9,898	29,388
AVG. HH Income	\$87,317	\$105,223	\$106,723
Daytime Population	367	8,082	20,758

## Contact

BO LEFFEL  
Vice Chair  
+1 317 639 0441  
[bo.leffel@cushwake.com](mailto:bo.leffel@cushwake.com)

JOHN A. CRISP, SIOR  
Executive Managing Director  
+1 317 639 0468  
[john.crisp@cushwake.com](mailto:john.crisp@cushwake.com)

One American Square  
Suite 1800  
Indianapolis, IN 46282  
+1 317 639 0515

©2025 Cushman & Wakefield. All rights reserved. The information contained in this communication is strictly confidential. This information has been obtained from sources believed to be reliable but has not been verified. No warranty or representation, express or implied, is made as to the condition of the property (or properties) referenced herein or as to the accuracy or completeness of the information contained herein, and same is submitted subject to errors, omissions, change of price, rental or other conditions, withdrawal without notice, and to any special listing conditions imposed by the property owner(s). Any projections, opinions or estimates are subject to uncertainty and do not signify current or future property performance.