



AVAILABLE FOR SALE OR LEASE

# 4035 PIEDMONT PARKWAY

High Point, NC

±44,704 RSF on ±4 acres



# 4035 PIEDMONT PARKWAY

## HIGH POINT, NC

### PROPERTY FEATURES

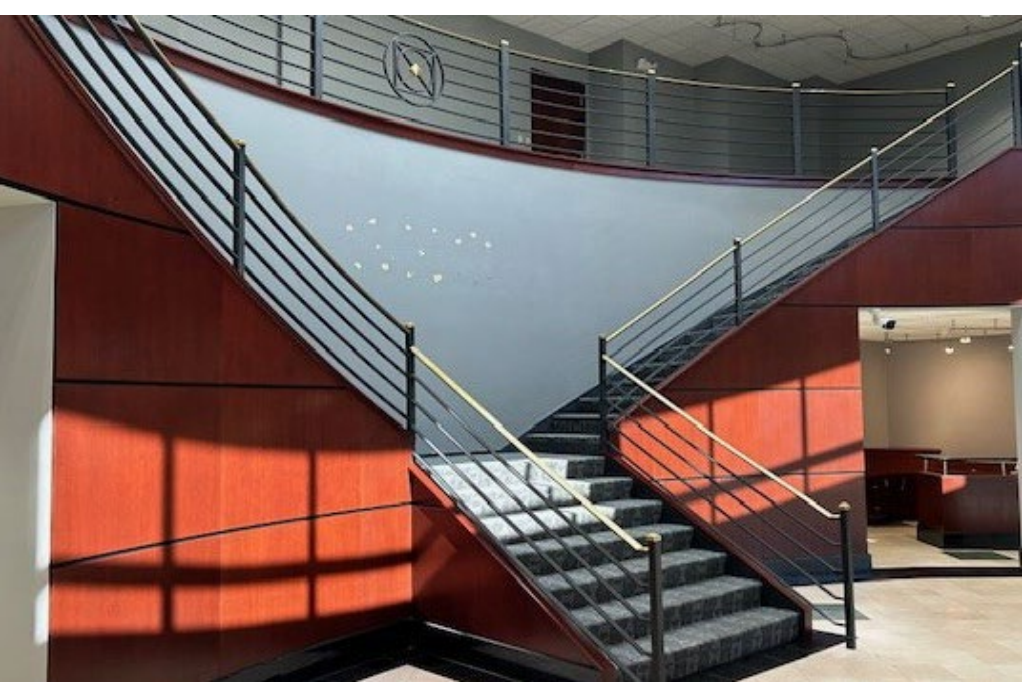
- Asking Price: Contact Brokers for information
- Lease Rate: \$15.00 PSF NNN
- 2 Story Office Building(stair and elevator access)
- ±44,704 RSF on ±4 Acres(±22,352 RSF floorplates)
- Zoned LI
- Built in 1988
- 4.00/1,000 SF Parking ratio
- Conveniently located in the Piedmont Centre with several amenities and restaurants close by



**CONFERENCE ROOM**

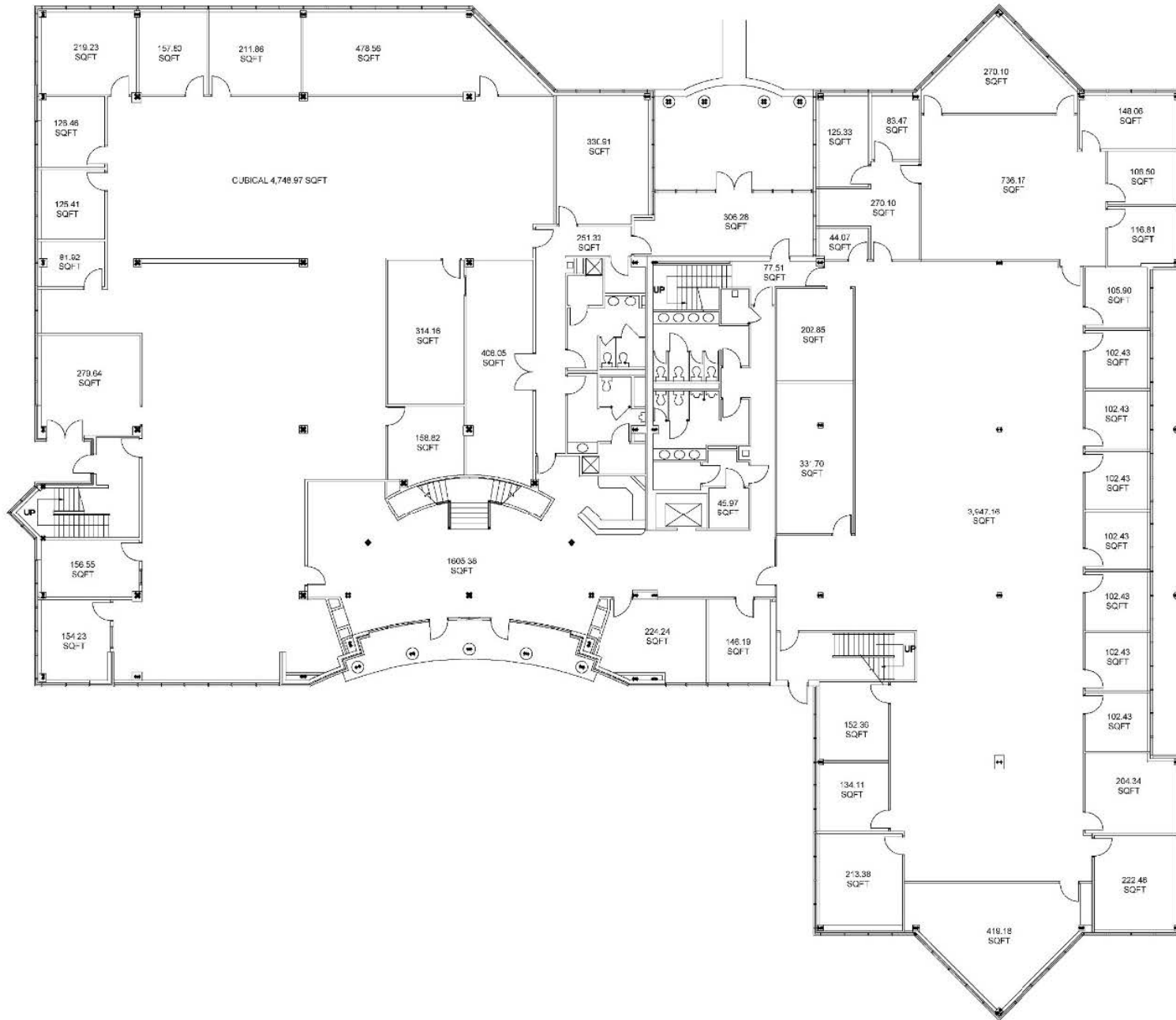


**KITCHENETTE**



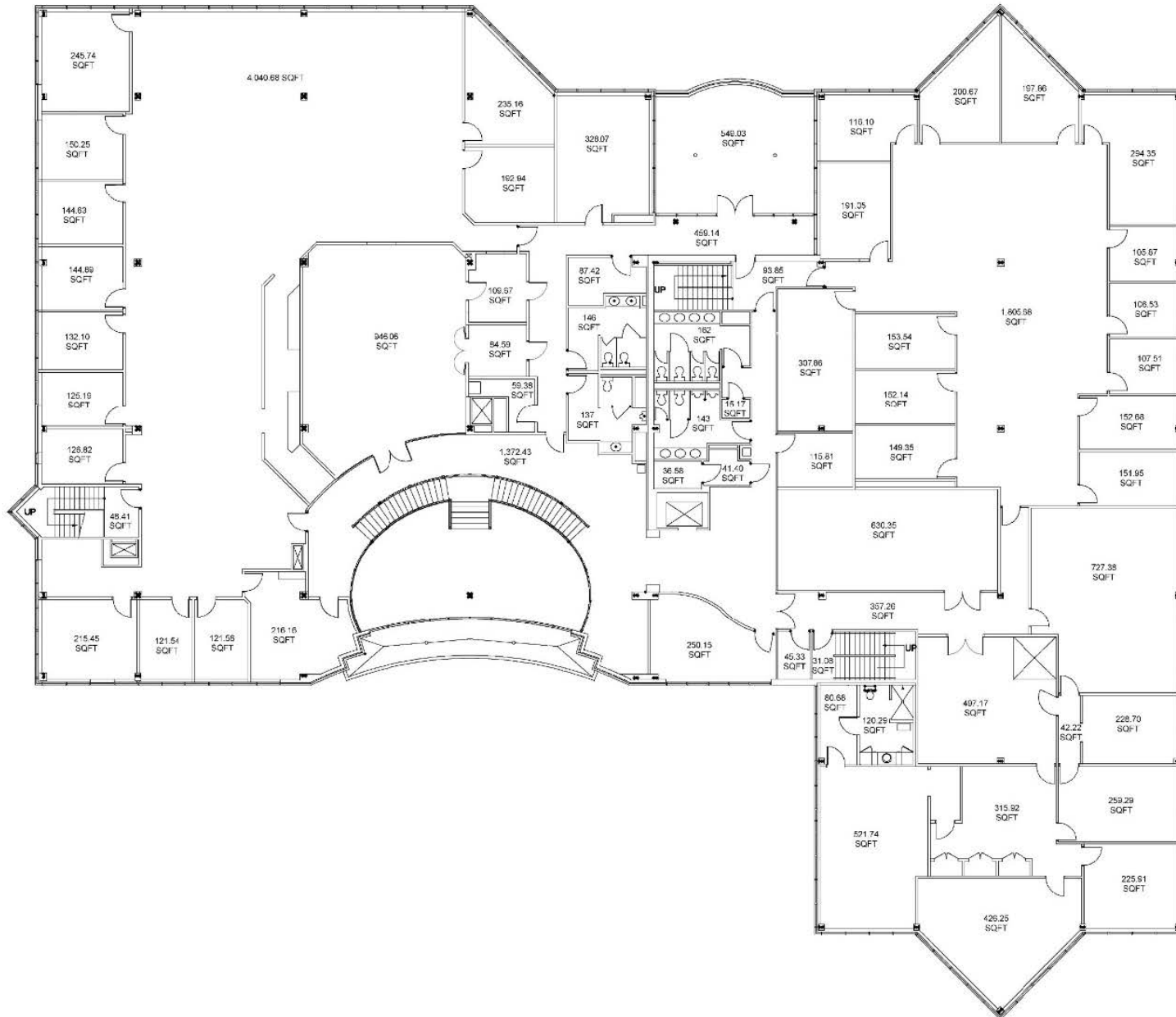
# 4035 PIEDMONT PARKWAY HIGH POINT, NC

## FIRST FLOOR FLOORPLAN



# 4035 PIEDMONT PARKWAY HIGH POINT, NC

## SECOND FLOOR FLOORPLAN



# 4035 PIEDMONT PARKWAY HIGH POINT, NC





**FOR MORE INFORMATION, CONTACT:**

**KEVIN KEMP, SIOR**

Managing Director

+1 336 812 3307

[kevin.kemp@cushwake.com](mailto:kevin.kemp@cushwake.com)

**RYAN GIOFFRE**

Senior Director

+1 336 601 3488

[ryan.gioffre@cushwake.com](mailto:ryan.gioffre@cushwake.com)

©2026 Cushman & Wakefield. All rights reserved. The information contained in this communication is strictly confidential. This information has been obtained from sources believed to be reliable but has not been verified. NO WARRANTY OR REPRESENTATION, EXPRESS OR IMPLIED, IS MADE AS TO THE CONDITION OF THE PROPERTY (OR PROPERTIES) REFERENCED HEREIN OR AS TO THE ACCURACY OR COMPLETENESS OF THE INFORMATION CONTAINED HEREIN, AND SAME IS SUBMITTED SUBJECT TO ERRORS, OMISSIONS, CHANGE OF PRICE, RENTAL OR OTHER CONDITIONS, WITHDRAWAL WITHOUT NOTICE, AND TO ANY SPECIAL LISTING CONDITIONS IMPOSED BY THE PROPERTY OWNER(S). ANY PROJECTIONS, OPINIONS OR ESTIMATES ARE SUBJECT TO UNCERTAINTY AND DO NOT SIGNIFY CURRENT OR FUTURE PROPERTY PERFORMANCE.

