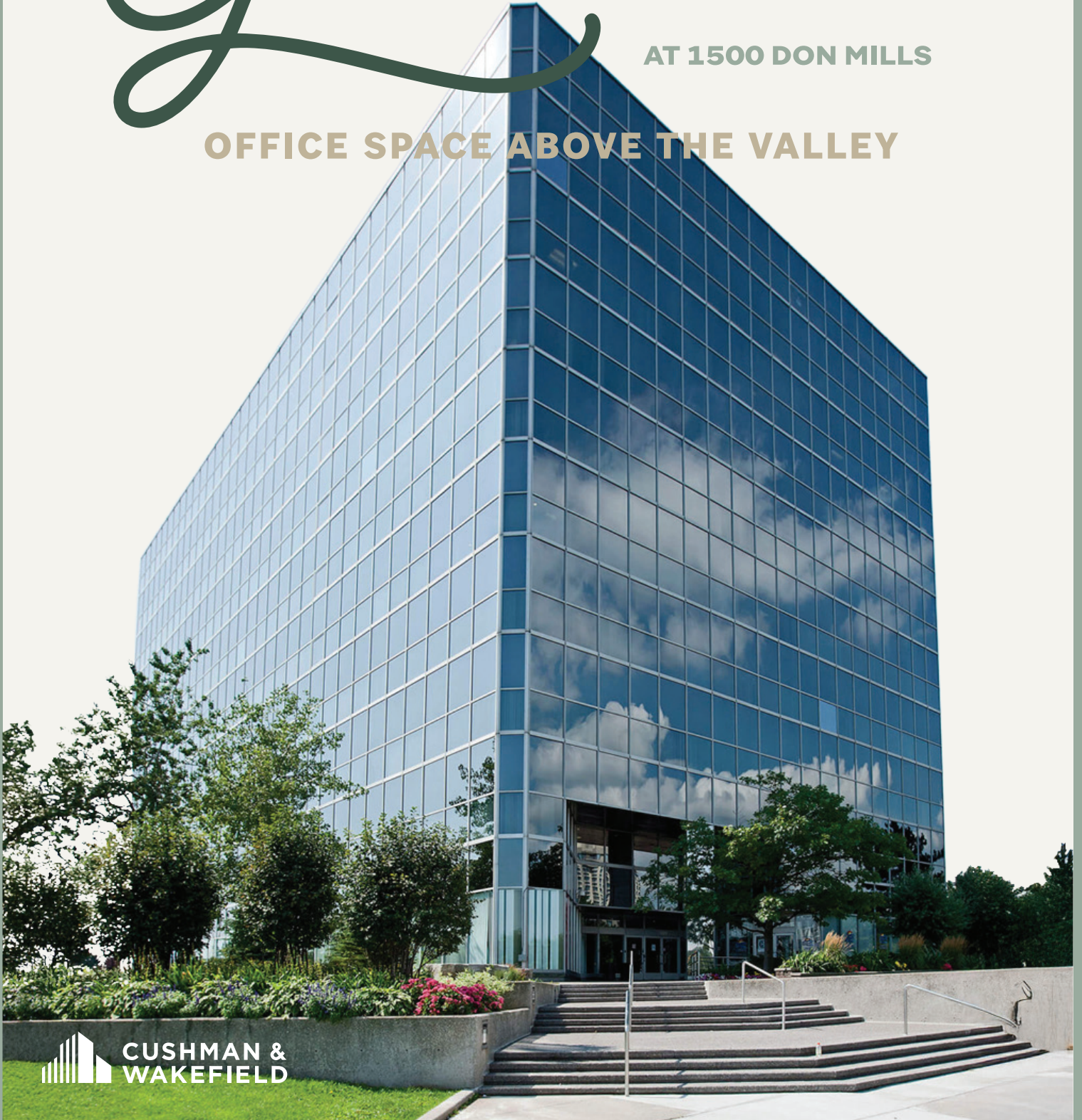


Greenside

AT 1500 DON MILLS

OFFICE SPACE ABOVE THE VALLEY







CUSHMAN &
WAKEFIELD



North York's Office Destination

Greenside at Don Mills is a well-positioned office destination in North Toronto's Don Mills corridor. Set on a beautifully landscaped six-acre property with panoramic views, the 10-storey office building offers direct access to the Don Valley Parkway, Highway 401 and nearby TTC transit routes. Surrounded by parkland and minutes from Shops at Don Mills, it delivers convenience, accessibility and everyday ease for growing companies.

Property Highlights

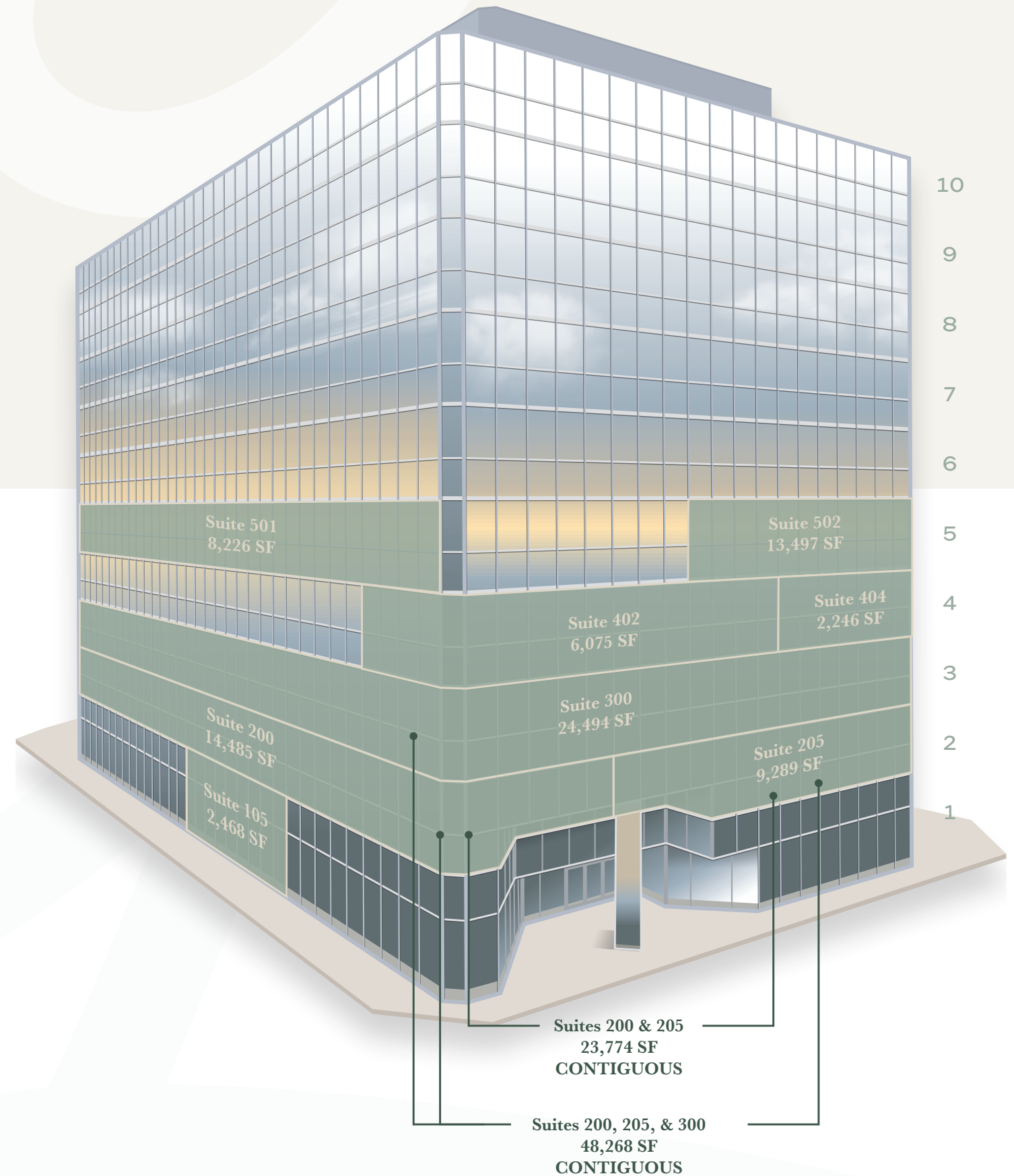
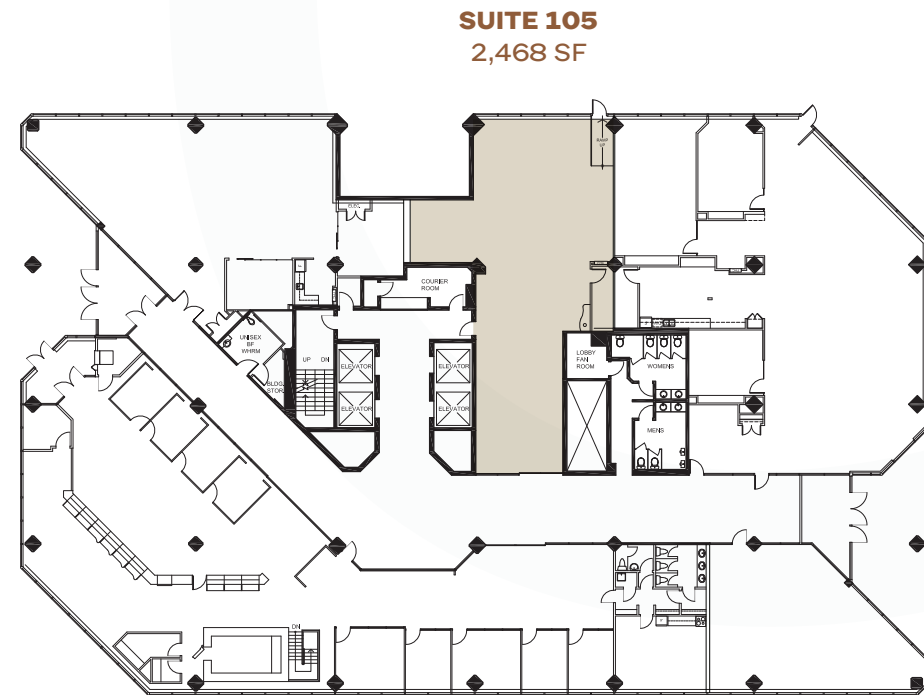
-  Office options from 2,468 - 48,268 SF
-  Net Rent: \$17.00 psf | Additional Rent: \$20.67 psf
-  3/1,000 SF parking
-  Flexible leasing options with full-floor, contiguous, move-in ready suites
-  On-site conveniences include collaboration space and outdoor patios
-  Direct access to HWY 404, Hwy 401, Don Valley Parkway and public transit
-  Centrally located near dining, hotels, retail, recreation & services



Options of All Sizes

Greenside at 1500 Don Mills offers flexible leasing opportunities from 2,000 to 50,000 square feet. Move-in-ready small and mid-sized suites allow for quick occupancy and reduced upfront costs, while two contiguous floors connected by an interconnecting staircase create an efficient option for larger users. Prominent signage opportunities further elevate tenant visibility and presence.

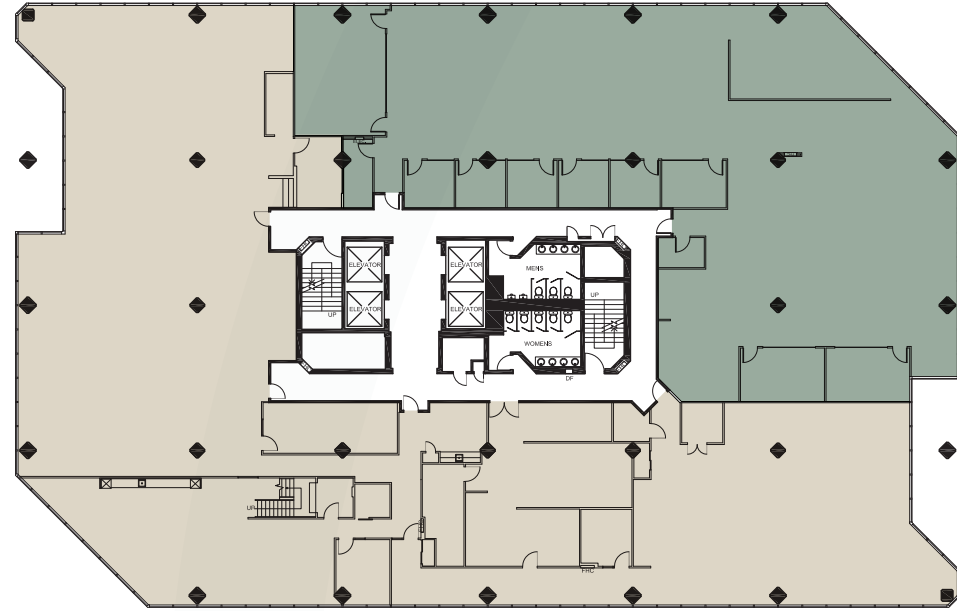
1ST FLOOR



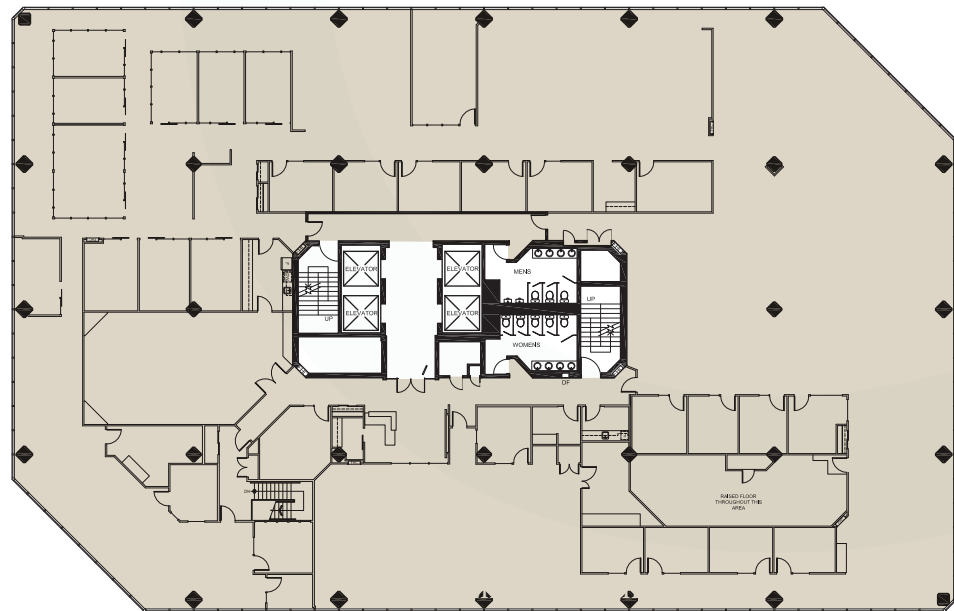
2ND AND 3RD FLOOR

SUITE 200-205-300 | 48,268 SF

SUITE 205
9,289 SF



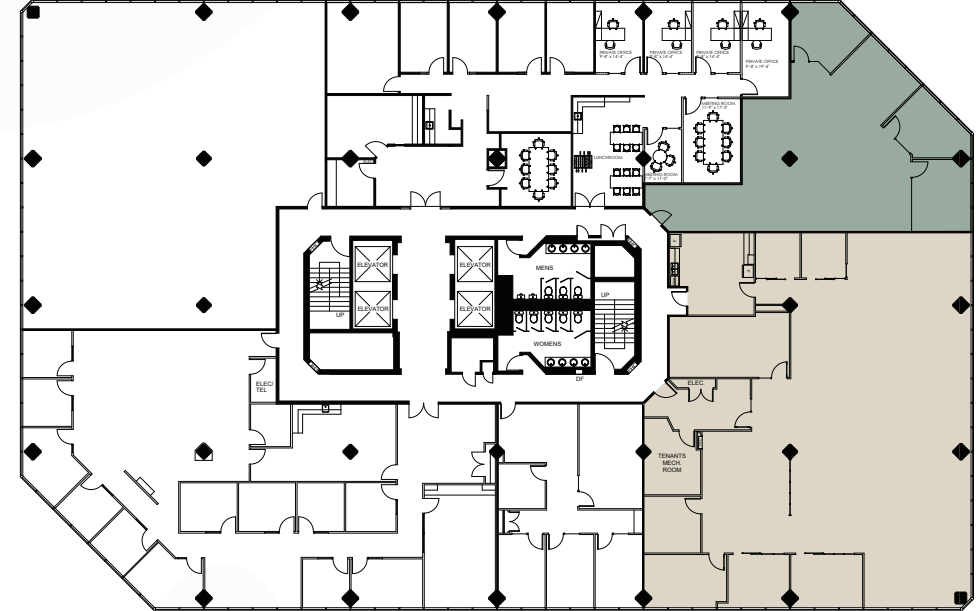
SUITE 200
14,485 SF



SUITE 300
24,494 SF

4TH FLOOR

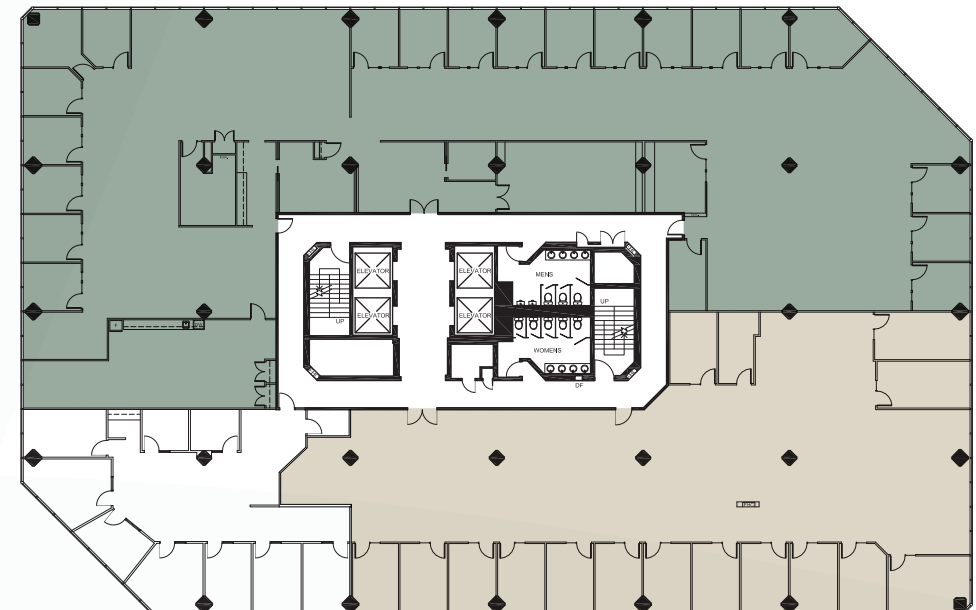
SUITE 404
2,248 SF



SUITE 402
6,075 SF

5TH FLOOR

SUITE 502
13,497 SF



SUITE 501
8,226 SF

Live. Work. Play.

Greenside at Don Mills is located in North Toronto's Don Mills corridor, surrounded by dining, retail and lifestyle amenities. Tenants also benefit from access to nature and recreation, with the Don Valley Trail and nearby Donalda Club adding to the area's appeal. Just minutes away, Shops at Don Mills offers a vibrant mix of restaurants, cafés, and boutique retail, complemented by LA Fitness Signature Club and a range of everyday conveniences.

45

Dining

17

Retail

2

Hotels

6

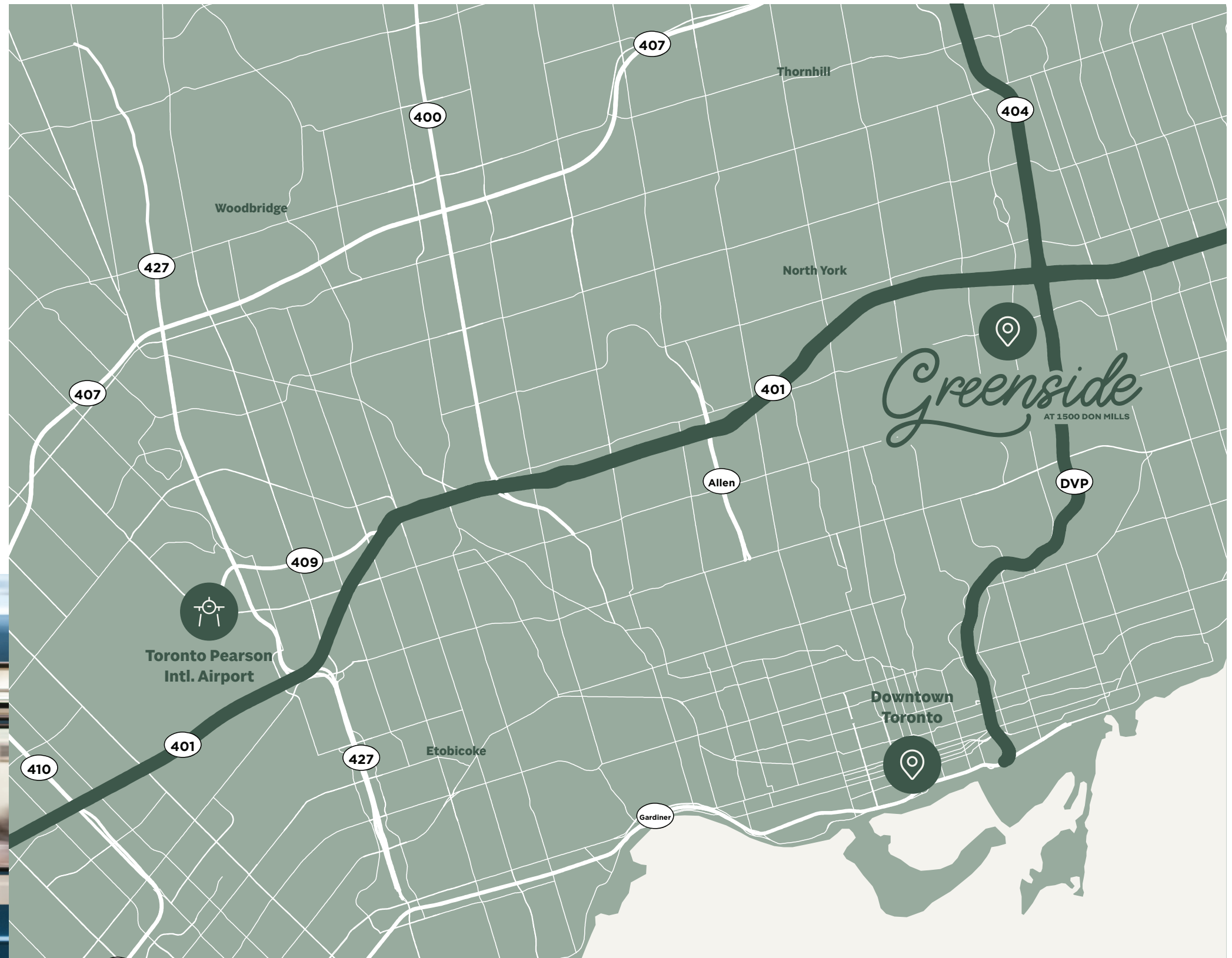
Fitness



Greenside
AT 1500 DON MILLS

Simplify Your Commute

Greenside at 1500 Don Mills is minutes from the Don Valley Parkway and Highway 401, providing exceptional access across the Greater Toronto Area. The property connects easily to York Region via Highway 404, Durham Region via Highway 401 and Downtown Toronto in less than 25 minutes. TTC bus service at the doorstep and quick access to nearby subway stations make commuting to and from the office simple.



DRIVE Times


Don Mills Station
5 mins


York Mills Station
10 mins


Billy Bishop Toronto City
23 mins


Downtown Toronto
25 mins


Toronto Pearson Int'l
36 mins

Greenside

AT 1500 DON MILLS

1500 Don Mills Rd, Toronto, ON M3B 3K4

Michael Wood +1 416 756 5406 michael.wood2@cushwake.com

Mike Brown +1 416 756 5416 mike.brown@cushwake.com



©2026 Cushman & Wakefield. All rights reserved. The information contained in this communication is strictly confidential. This information has been obtained from sources believed to be reliable but has not been verified. NO WARRANTY OR REPRESENTATION, EXPRESS OR IMPLIED, IS MADE AS TO THE CONDITION OF THE PROPERTY (OR PROPERTIES) REFERENCED HEREIN OR AS TO THE ACCURACY OR COMPLETENESS OF THE INFORMATION CONTAINED HEREIN, AND SAME IS SUBMITTED SUBJECT TO ERRORS, OMISSIONS, CHANGE OF PRICE, RENTAL OR OTHER CONDITIONS, WITHDRAWAL WITHOUT NOTICE, AND TO ANY SPECIAL LISTING CONDITIONS IMPOSED BY THE PROPERTY OWNER(S). ANY PROJECTIONS, OPINIONS OR ESTIMATES ARE SUBJECT TO UNCERTAINTY AND DO NOT SIGNIFY CURRENT OR FUTURE PROPERTY PERFORMANCE. COE-PM-EAST- 03/31/26