



OFFICE SUITES AVAILABLE FOR LEASE

2120 S. COLLEGE AVENUE
FORT COLLINS, CO 80525



2120 S. COLLEGE AVENUE

FORT COLLINS, CO 80525

2120 South College Avenue is ideally located at the intersection of College Avenue and Rutgers Avenue, directly across from the Whole Foods shopping center. This meticulously maintained office offers the convenience of on-site covered parking and is just minutes from Old Town Fort Collins. Additionally, it provides easy access with a 15-minute drive to I-25.

Available Suites Suite 1: 744 SF | Available Now
Suite 2: 680 SF | Available Now
Suite 8: 580 SF | Available 2/1/2026
Suites 1 & 2 can be combined for a total of 1,424 SF.

Pricing Suite 1: \$1,302/Month (Gross)
Suite 2: \$1,190/Month (Gross)
Suite 8: \$1,015/Month (Gross)

Building Size 11,042 SF

YOC 1974

Parking On-site

Signage Monument



Suites 1 & 2



Suites 1 & 2



Suite 8



Suite 8





Suites 1 & 2

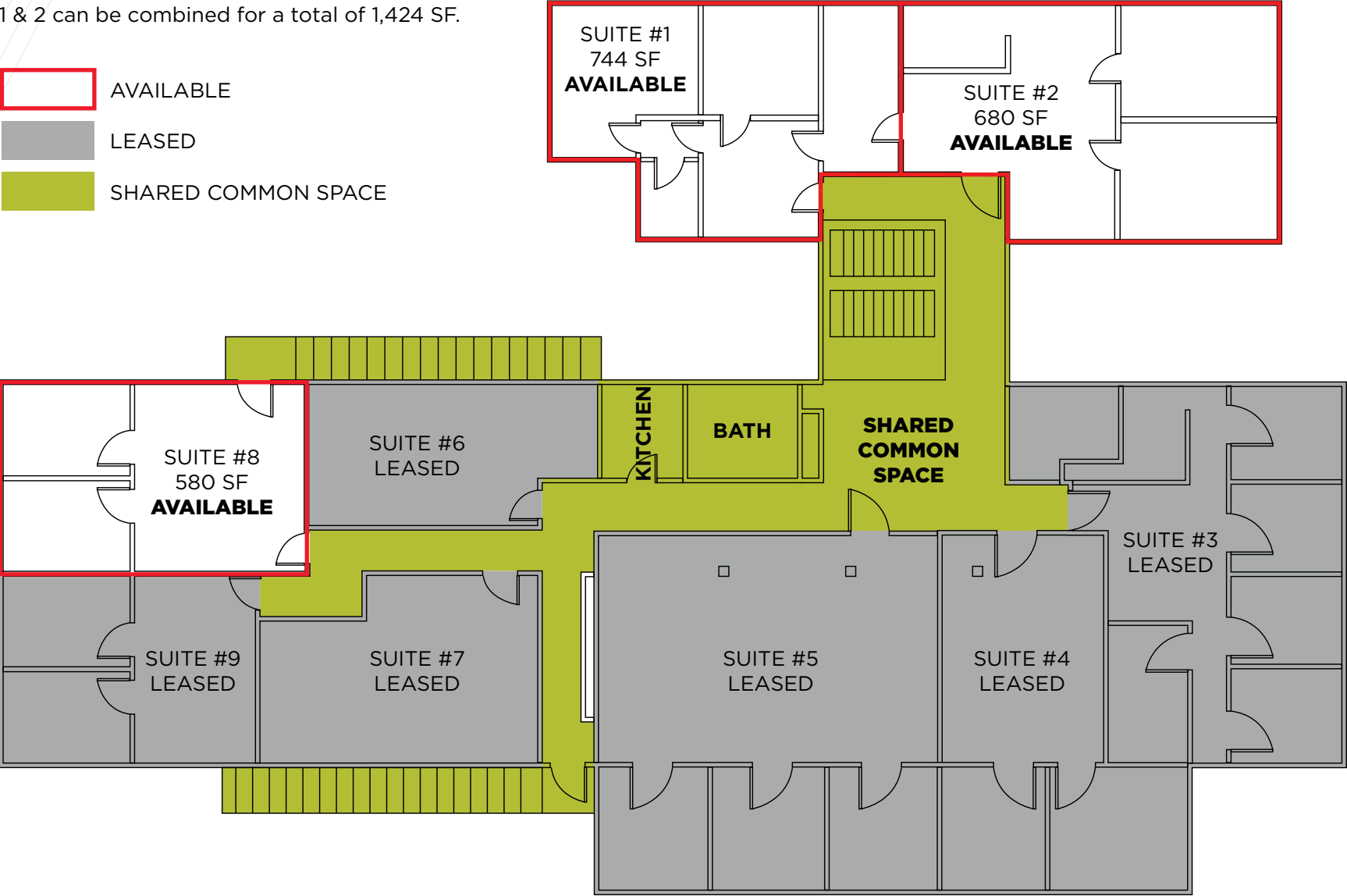
2120 S. COLLEGE AVENUE

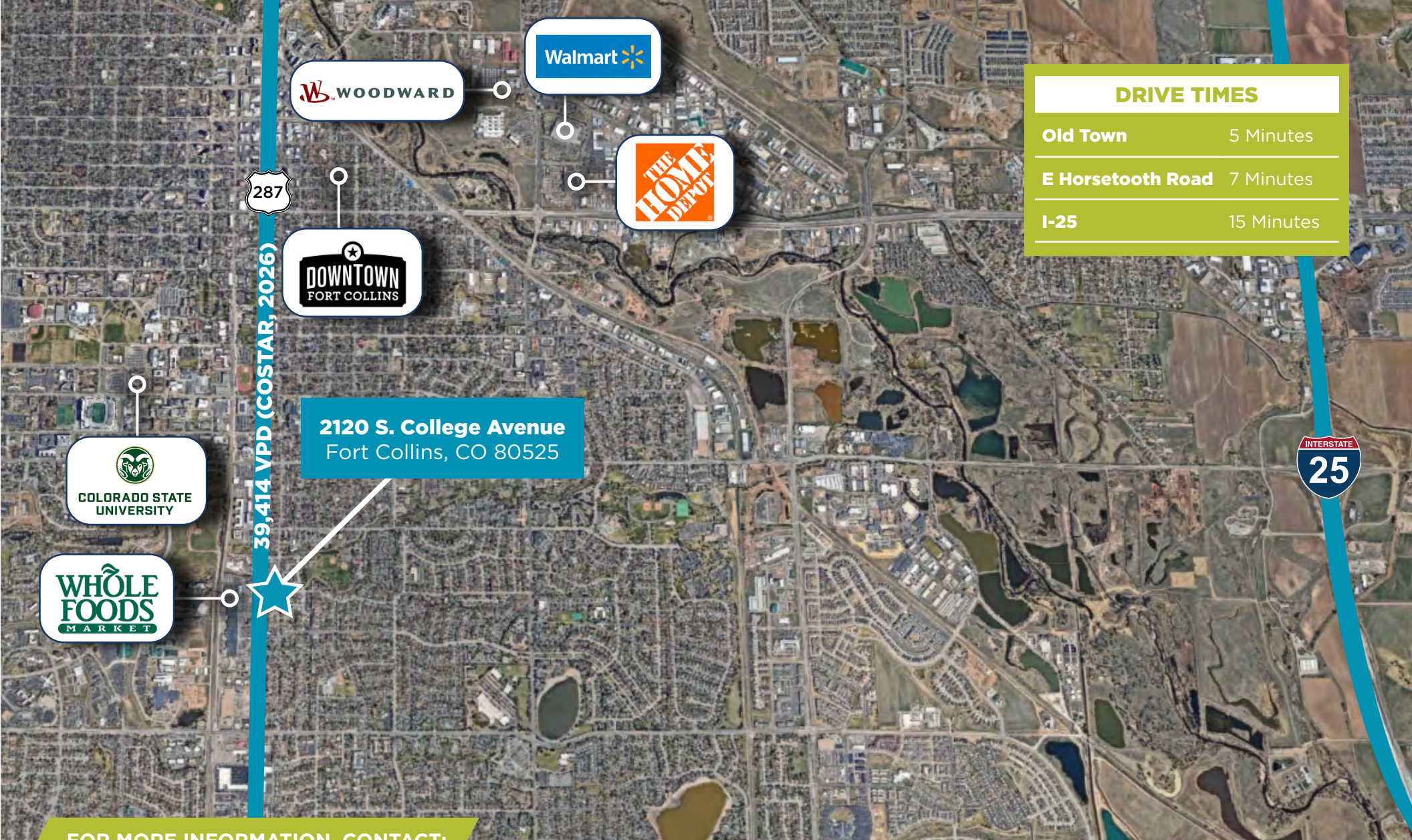
FORT COLLINS, CO 80525

SECOND FLOOR - FLOOR PLAN

Suites 1 & 2 can be combined for a total of 1,424 SF.

-  AVAILABLE
-  LEASED
-  SHARED COMMON SPACE





DRIVE TIMES

| | |
|-------------------|------------|
| Old Town | 5 Minutes |
| E Horsetooth Road | 7 Minutes |
| I-25 | 15 Minutes |

2120 S. College Avenue
Fort Collins, CO 80525

FOR MORE INFORMATION, CONTACT:

NATE HECKEL

Managing Director

+1 970 267 7724

nate.heckel@cushwake.com

TY MASHEK

Senior Associate

+1 303 525 3125

ty.mashek@cushwake.com

©2026 Cushman & Wakefield. All rights reserved. The information contained in this communication is strictly confidential. This information has been obtained from sources believed to be reliable but has not been verified. NO WARRANTY OR REPRESENTATION, EXPRESS OR IMPLIED, IS MADE AS TO THE CONDITION OF THE PROPERTY (OR PROPERTIES) REFERENCED HEREIN OR AS TO THE ACCURACY OR COMPLETENESS OF THE INFORMATION CONTAINED HEREIN, AND SAME IS SUBMITTED SUBJECT TO ERRORS, OMISSIONS, CHANGE OF PRICE, RENTAL OR OTHER CONDITIONS, WITHDRAWAL WITHOUT NOTICE, AND TO ANY SPECIAL LISTING CONDITIONS IMPOSED BY THE PROPERTY OWNER(S). ANY PROJECTIONS, OPINIONS OR ESTIMATES ARE SUBJECT TO UNCERTAINTY AND DO NOT SIGNIFY CURRENT OR FUTURE PROPERTY PERFORMANCE.



**CUSHMAN &
WAKEFIELD**