

**FOR LEASE**  
SPACE AVAILABLE

# CHINO COMMERCE CENTER

NEC Eucalyptus Ave & Ramona Ave, Chino, CA



A Quality Project Owned by:

**nuveen**

**BRICE LARSON**

909 942 4642

[brice.larson@cushwake.com](mailto:brice.larson@cushwake.com)

LIC #02056356

**CRUISE ADAMS**

909 942 4641

[cruise.adams@cushwake.com](mailto:cruise.adams@cushwake.com)

LIC #02075366

**GRANT ARTHUR**

909 942 4699

[grant.arthur@cushwake.com](mailto:grant.arthur@cushwake.com)

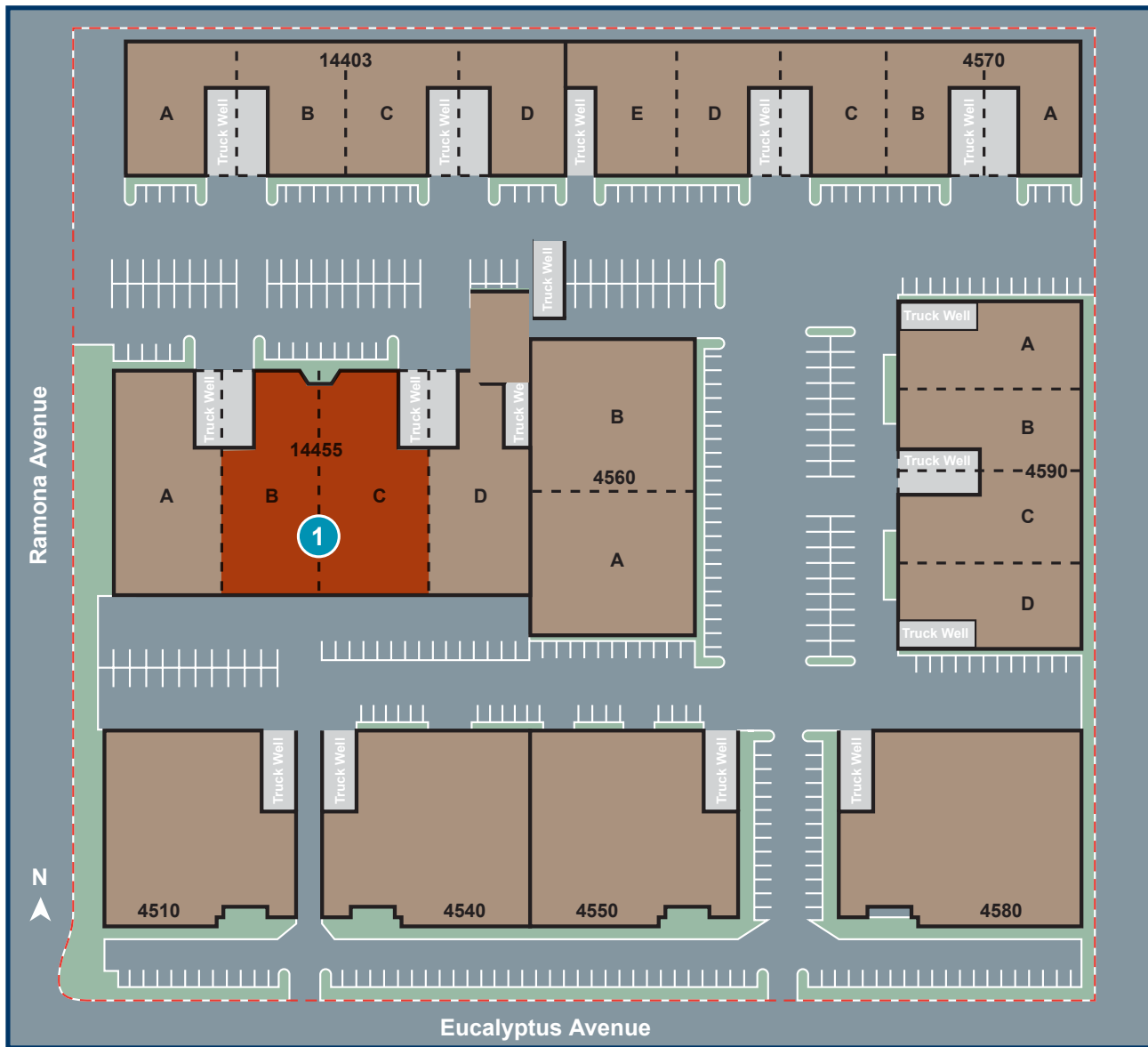
LIC #02064730

 **CUSHMAN &  
WAKEFIELD**



## PROJECT FEATURES

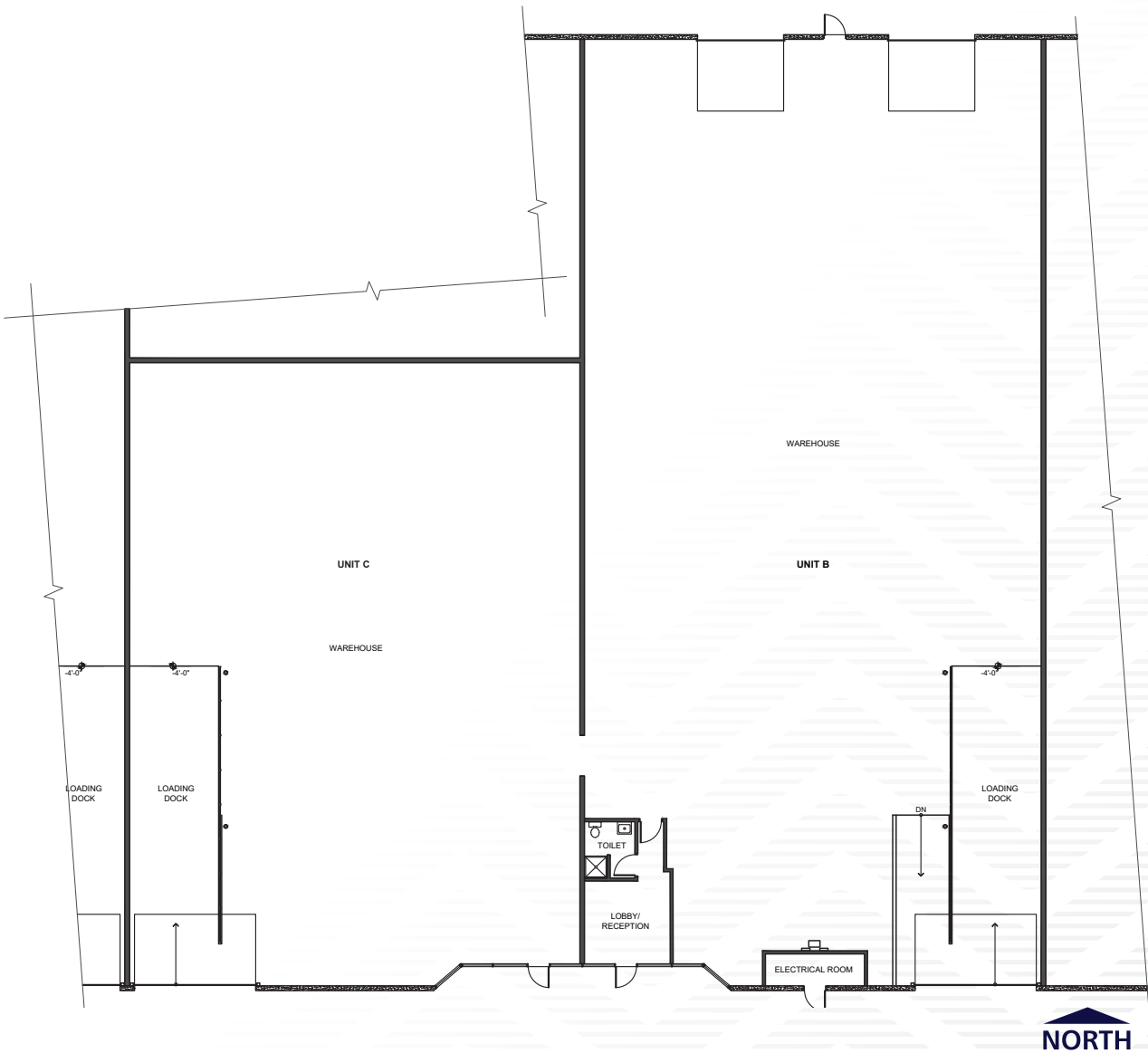
- » Institutionally Owned and Managed
- » Dock High Loading Doors
- » Ground Level Doors
- » 22' Minimum Clear Height
- » .33 GPM/3,000 SF Sprinkler Calc
- » Multiple Size Ranges Available
- » Business Park Setting
- » Central Chino / Inland Empire West Location
- » Excellent Access to SR-60 Freeway and Hwy 71
- » Street Frontage Units along Eucalyptus Avenue



| # | PROPERTY/UNIT               | SF     | OFFICE SF | LOADING DOORS                         | AVAILABLE | ASKING LEASE RATE |
|---|-----------------------------|--------|-----------|---------------------------------------|-----------|-------------------|
| 1 | 14455 Ramona Ave, Units B&C | 14,838 | TBD       | 2 Dock Doors and 2 Ground Level Doors | Now       | TBD               |

# 14455 Ramona Ave, Units B&C

- » 14,838 SF for Lease
- » 22' Minimum Clear Height
- » Private Offices, Lobby, and Restrooms
- » Two (2) Dock High Doors
- » Two (2) Ground Level Doors



A Quality Project Owned by:

**nuveen**

**BRICE LARSON**  
 909 942 4642  
 brice.larson@cushwake.com  
 LIC #02056356

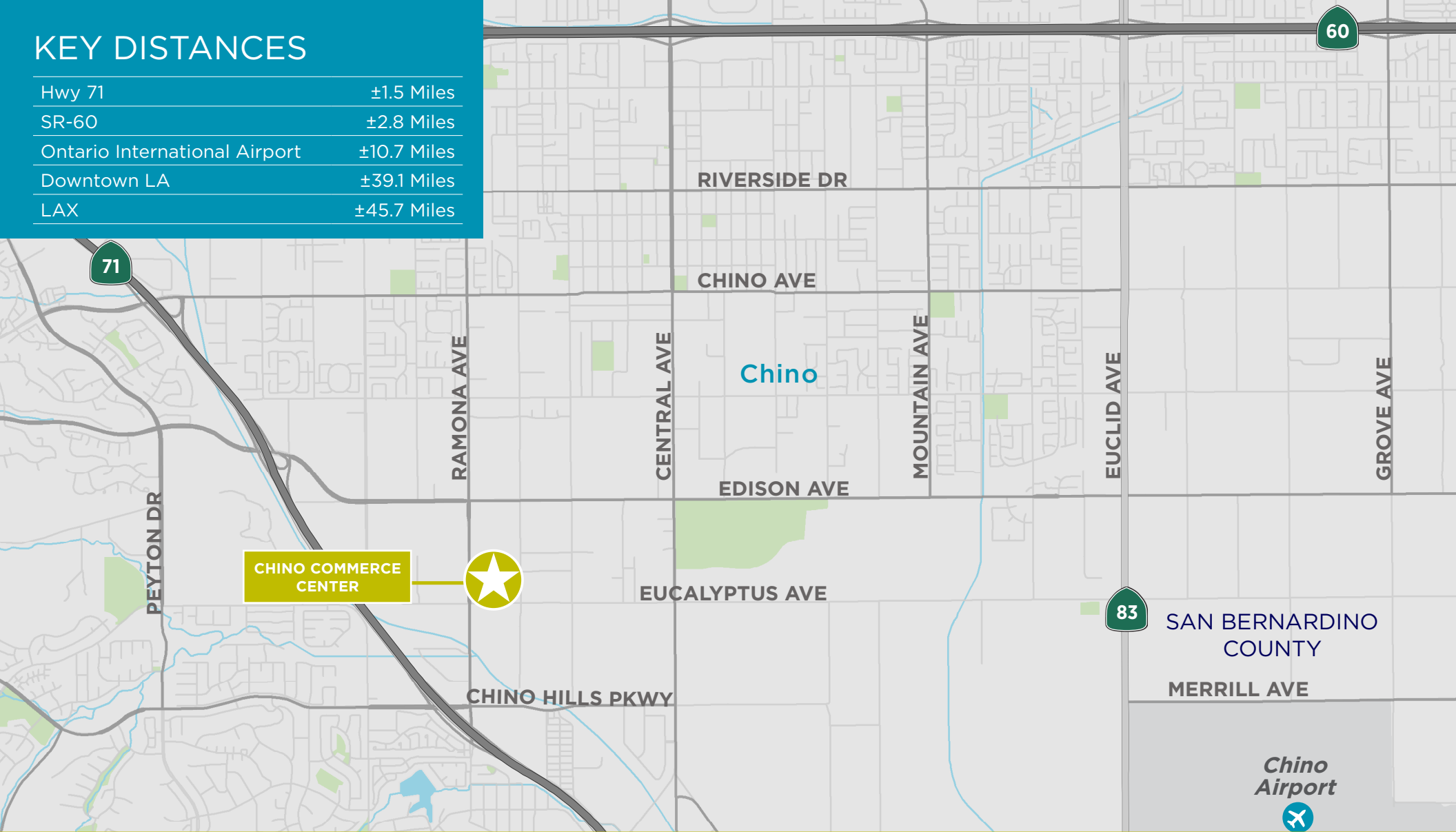
**CRUISE ADAMS**  
 909 942 4641  
 cruise.adams@cushwake.com  
 LIC #02075366

**GRANT ARTHUR**  
 909 942 4699  
 grant.arthur@cushwake.com  
 LIC #02064730



# KEY DISTANCES

|                               |             |
|-------------------------------|-------------|
| Hwy 71                        | ±1.5 Miles  |
| SR-60                         | ±2.8 Miles  |
| Ontario International Airport | ±10.7 Miles |
| Downtown LA                   | ±39.1 Miles |
| LAX                           | ±45.7 Miles |



Please contact Exclusive Agents for further information:

A Quality Project Owned by:

**nuveen**

**BRICE LARSON**

909 942 4642

[brice.larson@cushwake.com](mailto:brice.larson@cushwake.com)

LIC #02056356

**CRUISE ADAMS**

909 942 4641

[cruise.adams@cushwake.com](mailto:cruise.adams@cushwake.com)

LIC #02075366

**GRANT ARTHUR**

909 942 4699

[grant.arthur@cushwake.com](mailto:grant.arthur@cushwake.com)

LIC #02064730



©2024 Cushman & Wakefield. All rights reserved. The information contained in this communication is strictly confidential. This information has been obtained from sources believed to be reliable but has not been verified. No warranty or representation, express or implied, is made as to the condition of the property (or properties) referenced herein or as to the accuracy or completeness of the information contained herein, and same is submitted subject to errors, omissions, change of price, rental or other conditions, withdrawal without notice, and to any special listing conditions imposed by the property owner(s). Any projections, opinions or estimates are subject to uncertainty and do not signify current or future property performance.