

FOR LEASE

6327 THOMPSON ROAD

BAYTOWN, TX 77521



11.9769 ACRES AVAILABLE



PROPERTY HIGHLIGHTS

EXTRA STABILIZED LAND OF 6.5 ACRES -
FULLY FENCED AND LIGHTED

2015
CONSTRUCTION

CRANE CAPABLE
SHOP BUILDING

10,970 SF
OFFICE

19,700 SF
SHOP

1,800 SF
COVERED WASH BAY

35,030 SF
UNDER ROOF

POWER
800 AMP | 3-PHASE
277/480V

35'
EVE HEIGHT
WITH PEAK ROOF
CLEARANCE AT 53'

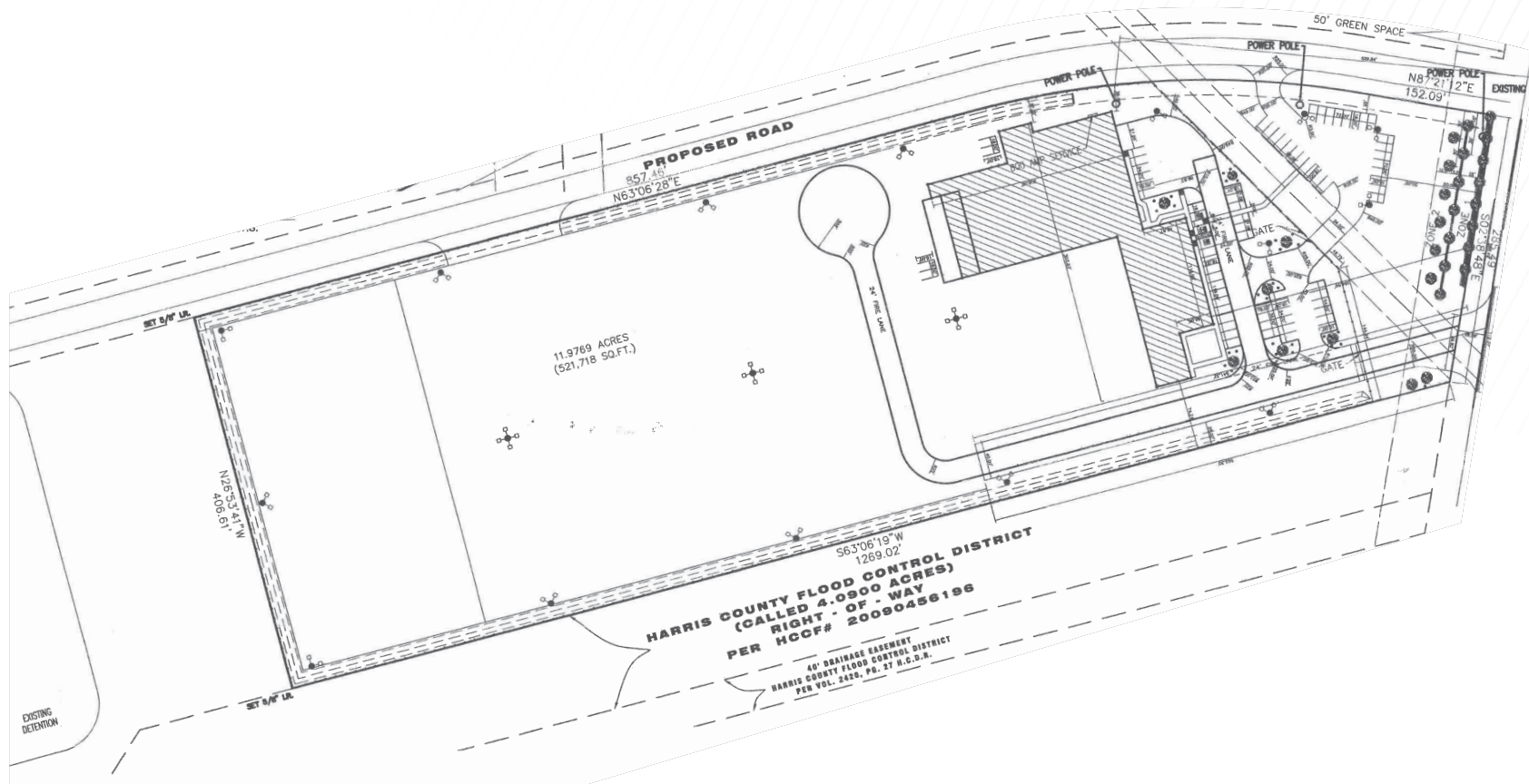
12"
SLAB

LED
YARD LIGHTING

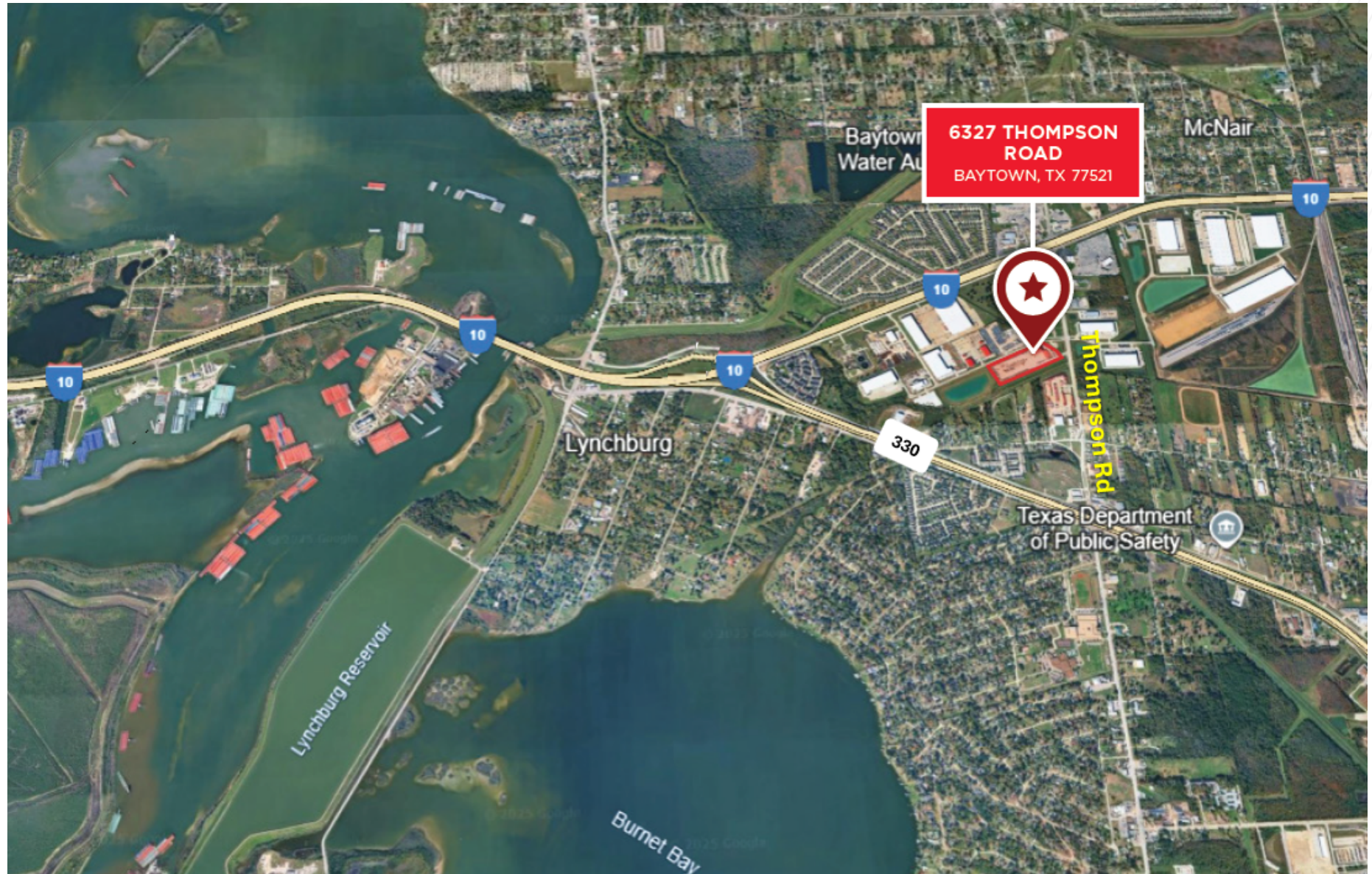
PIT FOR BELOW EQUIPMENT ACCESS



SITE PLAN



LOCATION MAP



INTERNAL PHOTOS



FOR MORE INFORMATION, PLEASE CONTACT:

Coe Parker, SIOR

Senior Director

+1 713 963 2825

coe.parker@cushwake.com

B. Kelley Parker, SIOR

Vice Chair

+1 713 963 2896

[kelley.parker@cushwake.com](mailto:kelly.parker@cushwake.com)



©2025 Cushman & Wakefield. All rights reserved. The information contained in this communication is strictly confidential. This information has been obtained from sources believed to be reliable but has not been verified. NO WARRANTY OR REPRESENTATION, EXPRESS OR IMPLIED, IS MADE AS TO THE CONDITION OF THE PROPERTY (OR PROPERTIES) REFERENCED HEREIN OR AS TO THE ACCURACY OR COMPLETENESS OF THE INFORMATION CONTAINED HEREIN, AND SAME IS SUBMITTED SUBJECT TO ERRORS, OMISSIONS, CHANGE OF PRICE, RENTAL OR OTHER CONDITIONS, WITHDRAWAL WITHOUT NOTICE, AND TO ANY SPECIAL LISTING CONDITIONS IMPOSED BY THE PROPERTY OWNER(S). ANY PROJECTIONS, OPINIONS OR ESTIMATES ARE SUBJECT TO UNCERTAINTY AND DO NOT SIGNIFY CURRENT OR FUTURE PROPERTY PERFORMANCE.

