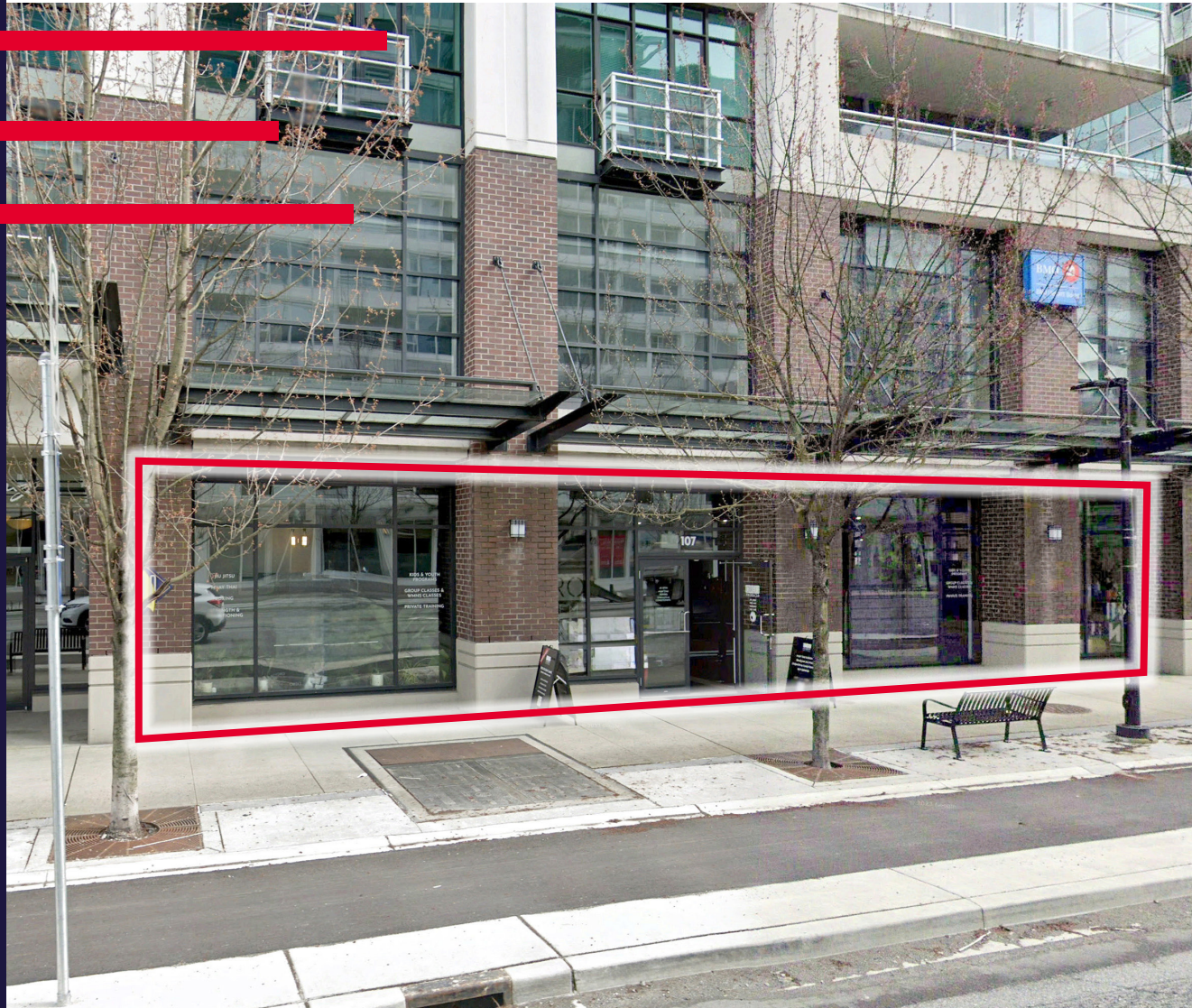


PRIME LOWER LONSDALE

RETAIL SPACE FOR LEASE



#107 - 100 EAST ESPLANADE AVE
NORTH VANCOUVER, BC

ANDREI JELESCU
Personal Real Estate Corporation
Associate Vice President
+1 604 640 5812
andrei.jelescu@cushwake.com

CODY BUCHAMER
Personal Real Estate Corporation
Associate Vice President
+1 604 608 5999
cody.buchamer@cushwake.com

SYDNEY OSLUND
Senior Associate
+1 604 262 8775
sydney.oslund@cushwake.com

THE LOCATION

100 East Esplanade is ideally positioned in the heart of Lower Lonsdale, one of North Vancouver's most vibrant and rapidly growing waterfront communities. Just steps from Lonsdale Quay, The Shipyards District, and the Seabus terminal, the property benefits from strong pedestrian traffic, excellent transit connectivity, and a dynamic mix of restaurants, retail, and services.

UNIT SIZE

Total Area **3,396 SF**

FEATURES

- Expansive street front exposure with great branding opportunities
- High exposed ceilings with floor to ceiling windows, providing great natural light throughout premises
- Open concept retail space with existing fitness studio improvements in place
- Newly improved with fresh paint and flooring, and distributed HVAC throughout premises
- Built out with open reception area, and three (3) customer washrooms: Two (2) washrooms with showers, One (1) universal accessible washroom
- Separate staff kitchenette and washroom at rear of premises, with enclosed administrative office

NET RENT

Please reach out to listing brokers

ADDITIONAL RENT

\$27.87 PSF (2025 est.) + 5% of basic rent management fee

ZONING

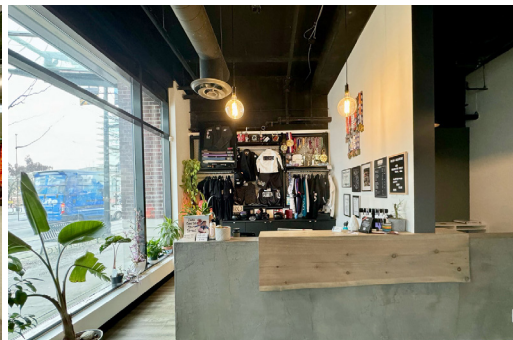
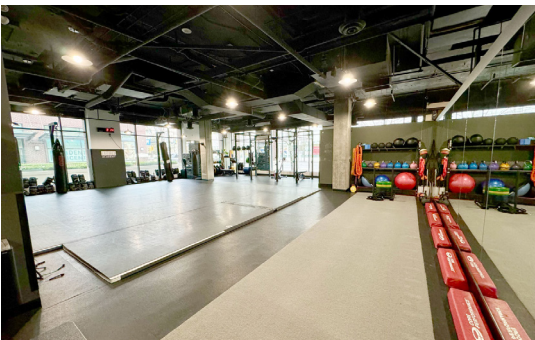
CD 393

AVAILABILITY

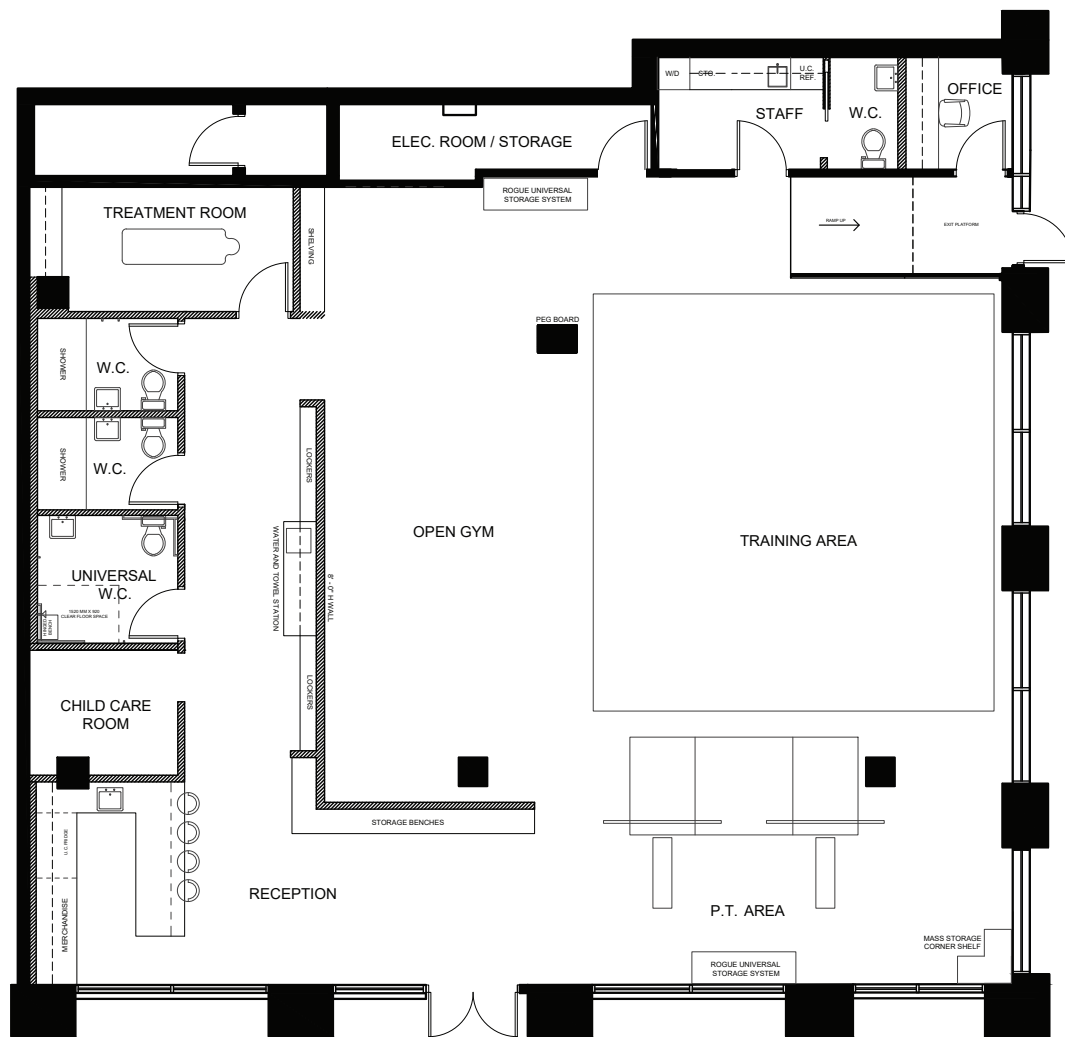
Immediately

PARKING

Two (2) reserved stalls available at market rates



INTERIOR IMAGES



FLOORPLAN

UNIT #107 100 EAST ESPLANADE AVENUE

NORTH VANCOUVER, BC

PLEASE CONTACT US
FOR MORE INFORMATION:

ANDREI JELESCU

Personal Real Estate Corporation
Associate Vice President
+1 604 640 5812
andrei.jelescu@cushwake.com

CODY BUCHAMER

Personal Real Estate Corporation
Associate Vice President
+1 604 608 5999
cody.buchamer@cushwake.com

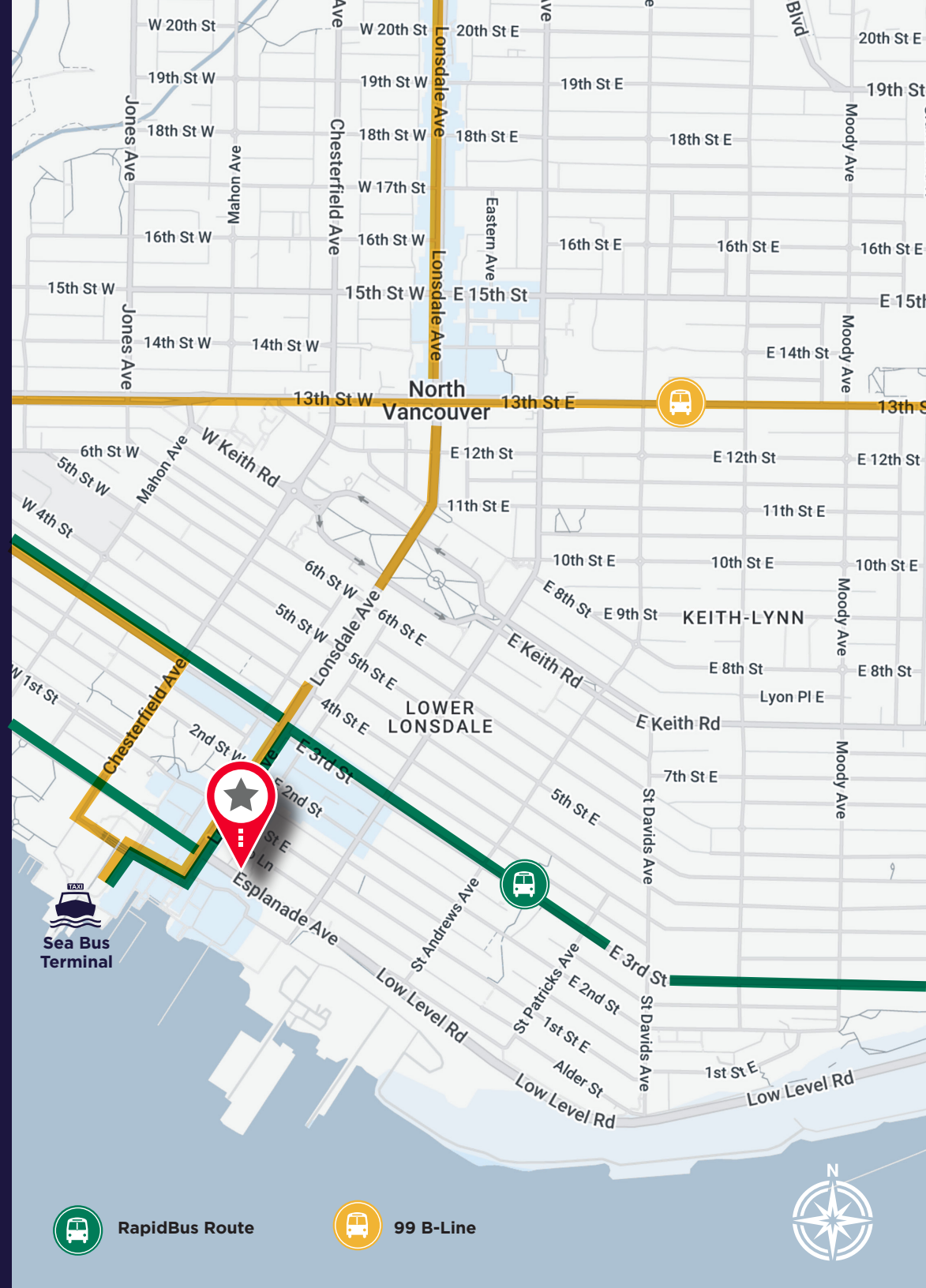
SYDNEY OSLUND

Senior Associate
+1 604 262 8775
sydney.oslund@cushwake.com



700 West Georgia Street, Suite 1200 / PO Box 10023, Pacific Centre /
Vancouver, BC V7Y 1A1 / +1 604 683 3111 / cushmanwakefield.com

©2026 Cushman & Wakefield. All rights reserved. The information contained in this communication is strictly confidential. This information has been obtained from sources believed to be reliable but has not been verified. NO WARRANTY OR REPRESENTATION, EXPRESS OR IMPLIED, IS MADE AS TO THE CONDITION OF THE PROPERTY (OR PROPERTIES) REFERENCED HEREIN OR AS TO THE ACCURACY OR COMPLETENESS OF THE INFORMATION CONTAINED HEREIN, AND SAME IS SUBMITTED SUBJECT TO ERRORS, OMISSIONS, CHANGE OF PRICE, RENTAL OR OTHER CONDITIONS, WITHDRAWAL WITHOUT NOTICE, AND TO ANY SPECIAL LISTING CONDITIONS IMPOSED BY THE PROPERTY OWNER(S). ANY PROJECTIONS, OPINIONS OR ESTIMATES ARE SUBJECT TO UNCERTAINTY AND DO NOT SIGNIFY CURRENT OR FUTURE PROPERTY PERFORMANCE.



RapidBus Route



99 B-Line

