



For Sublease

1326 Clarkson Clayton Center
Ellisville, Missouri 63011



2,302 SF Available

Property Highlights

- Sublease available through 05/31/2029
- Asking \$20.00/SF NNN
- Part of a 111,459 SF neighborhood center anchored by Dierberg's Grocery
- Excellent demographics, with an Avg. HHI of \$149,168 in surrounding 3-mile radius
- Neighboring retailers include Lifetime Fitness, Chik-Fil-A, Walgreens, Walnut Grill and more

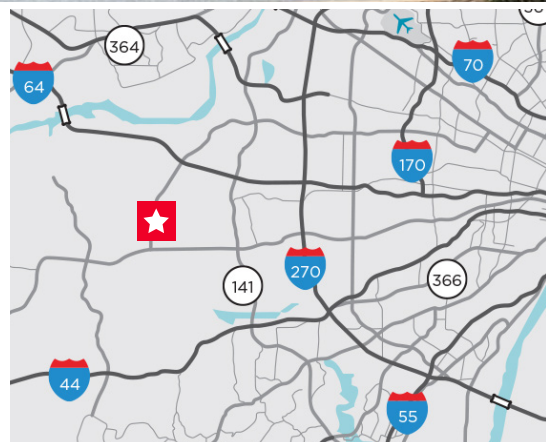
Demographics

	1 Mile	3 Miles	5 Miles
Population	6,670	63,664	135,257
Households	2,687	24,176	51,944
Average HH Income	\$142,695	\$149,168	\$148,267

Traffic Counts

Clarkson North of Clayton Road - 42,529 VPD

Clayton West of Clarkson Road - 33,041 VPD



David Wirth

+1 314 925 2916
david.wirth@cushwake.com

Kyle Pershing

+1 314 236 5471
kyle.pershing@cushwake.com

7700 Forsyth Blvd, Suite 1210
St. Louis, Missouri
main +1 314 862 7100
cushmanwakefield.com



For Sublease

1326 Clarkson Clayton Center
Ellisville, Missouri 63011

Property Photos

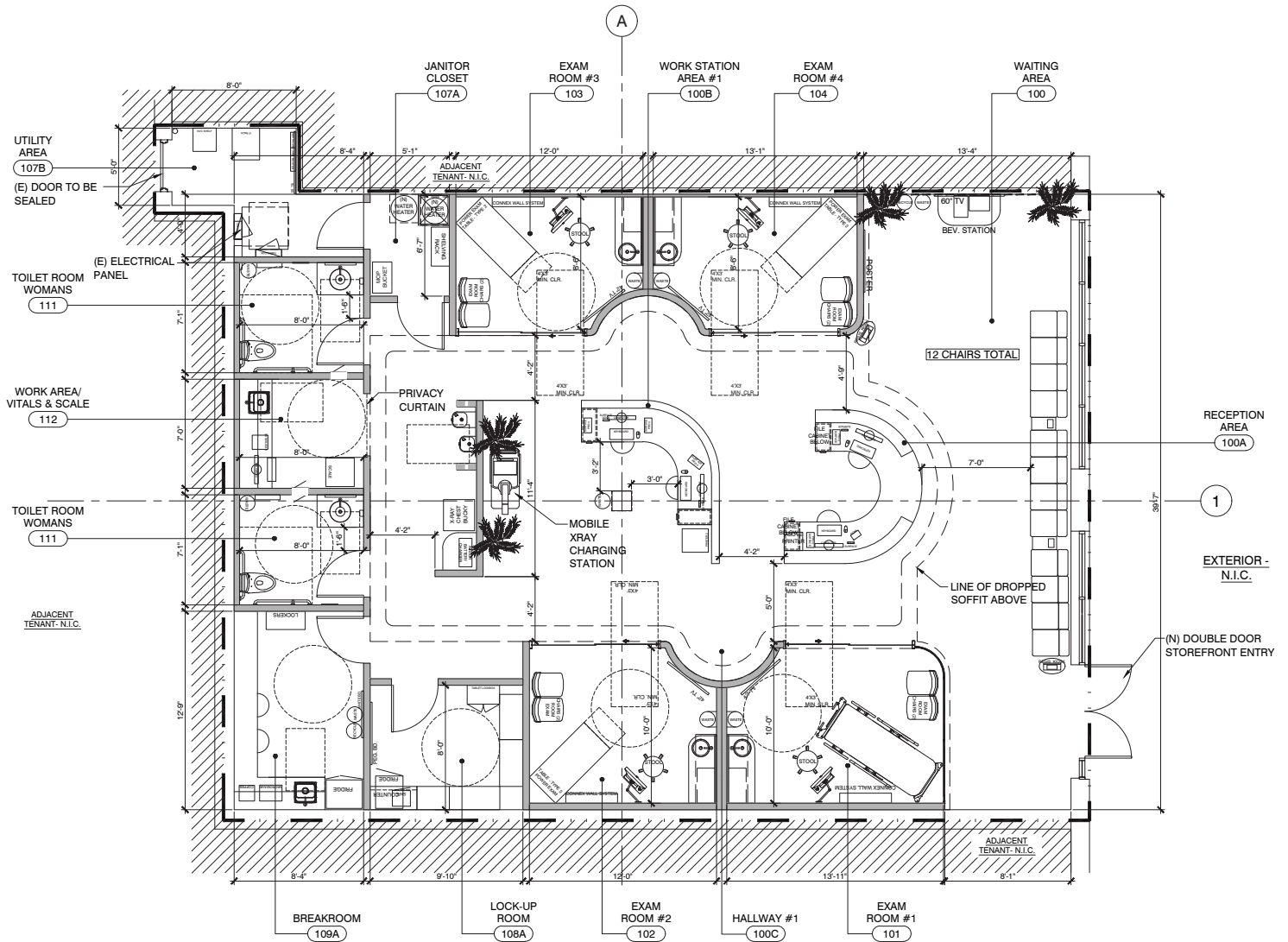


David Wirth
+1 314 925 2916
david.wirth@cushwake.com

Kyle Pershing
+1 314 236 5471
kyle.pershing@cushwake.com

7700 Forsyth Blvd, Suite 1210
St. Louis, Missouri
main +1 314 862 7100
cushmanwakefield.com

Floor Plan



David Wirth
+1 314 925 2916
david.wirth@cushwake.com

Kyle Pershing
+1 314 236 5471
kyle.pershing@cushwake.com

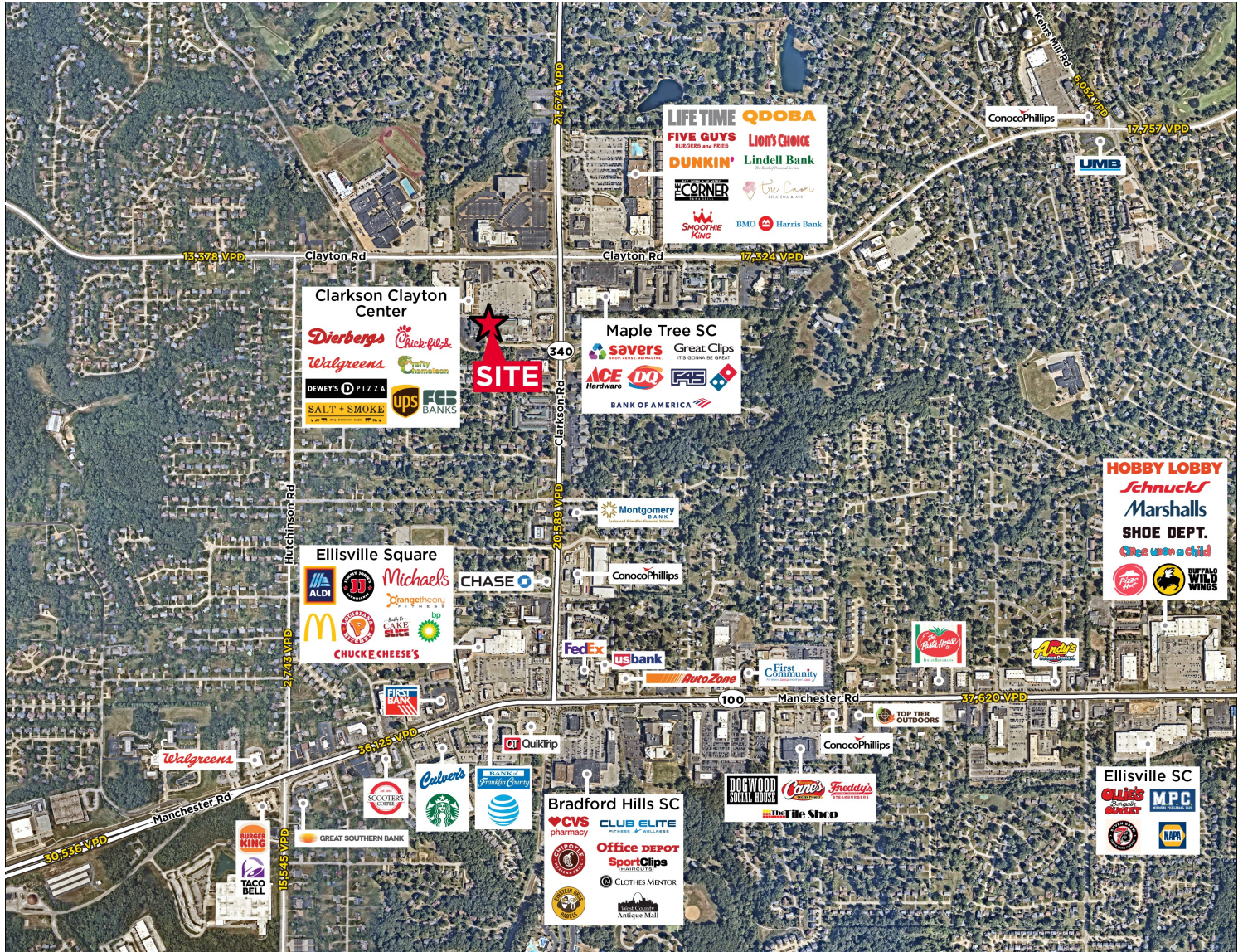
7700 Forsyth Blvd, Suite 1210
St. Louis, Missouri
main +1 314 862 7100
cushmanwakefield.com



For Sublease

1326 Clarkson Clayton Center
Ellisville, Missouri 63011

Trade Aerial



David Wirth
+1 314 925 2916
david.wirth@cushwake.com

Kyle Pershing
+1 314 236 5471
kyle.pershing@cushwake.com

7700 Forsyth Blvd, Suite 1210
St. Louis, Missouri
main +1 314 862 7100
cushmanwakefield.com