



CUSHMAN &
WAKEFIELD

FOR LEASE

308 E 8TH

Corner of Sycamore & 8th | 8TH Street Design District

PROPERTY HIGHLIGHTS

Six-Story Building

On the corner of
Sycamore & 8th Street

3,895-4,600 SF Available

On floors 1 & 6

Close Proximity

To the Backstage
Entertainment District &
OTR

Located in the 8th Street Design District

"Approximately 336+ working professionals in the fields of architecture, photography, graphic design, advertising, branding, urban and sustainable building design, and interior design" - Urban Cincy

Monthly Parking

Available Nearby

On-Site

Ownership & Property
Managed by Cushman &
Wakefield

Asking \$17.95 /SF

Full Service Gross

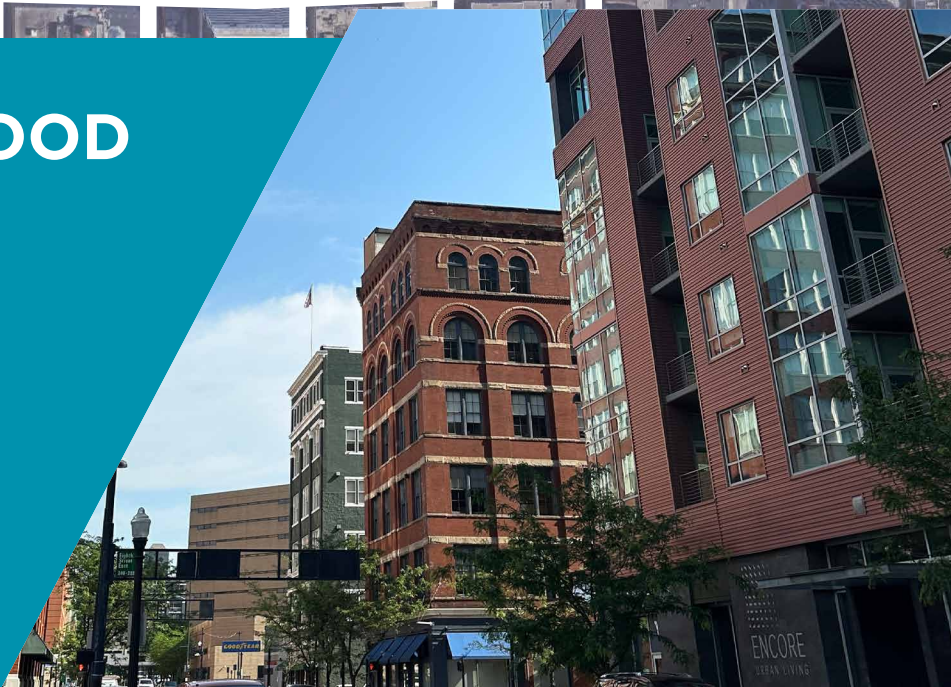




THE NEIGHBORHOOD

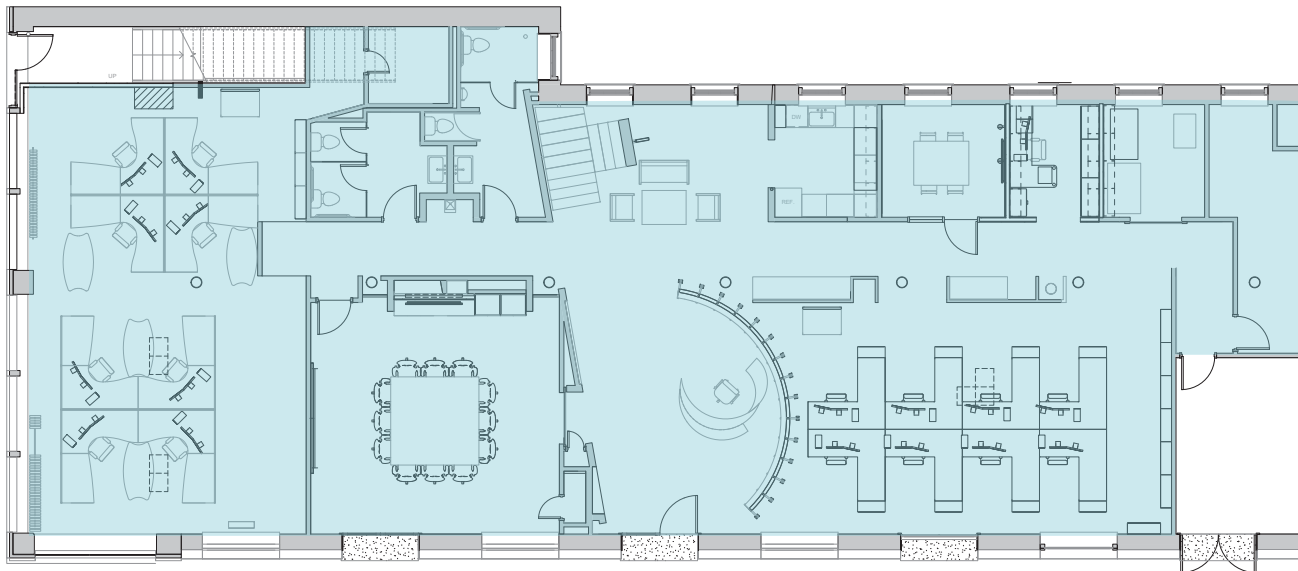
IN WALKING DISTANCE TO DOWNTOWN'S HOT SPOTS

- OTR
- PENDLETON
- COURT STREET PLAZA
- FOUNTAIN SQUARE
- THE BANKS



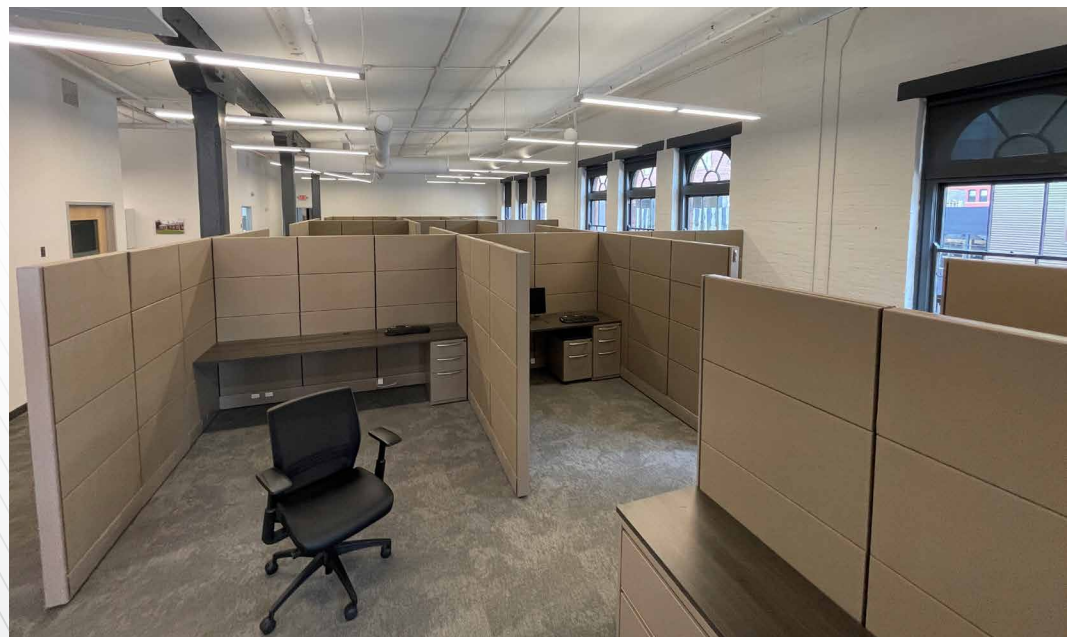
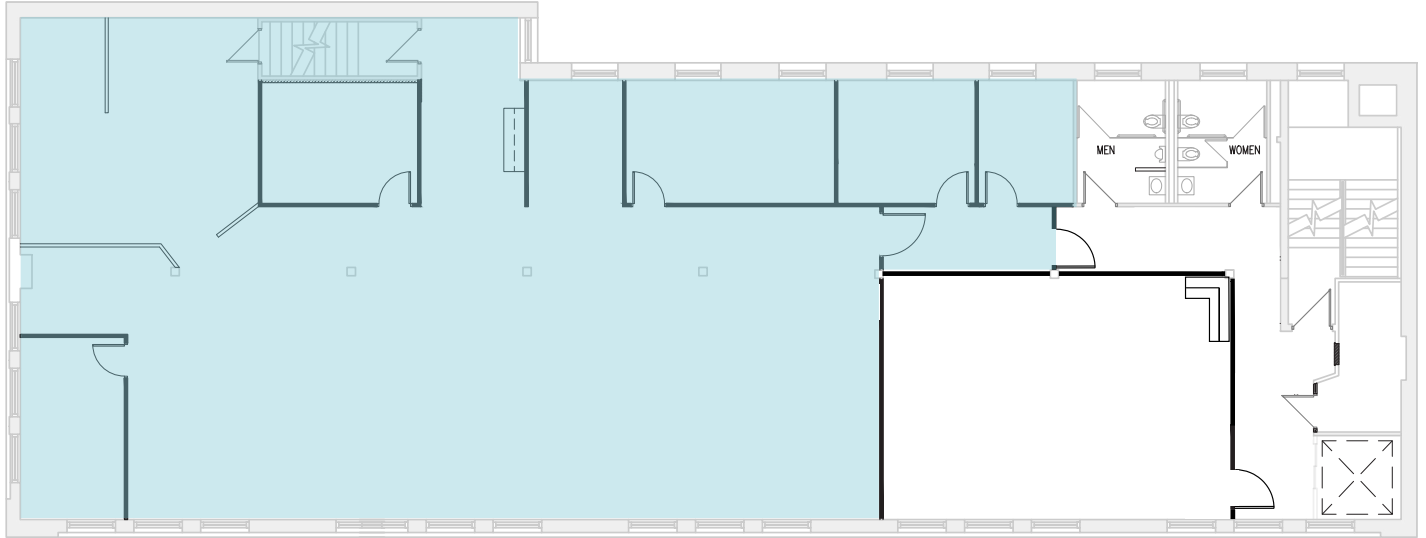
1ST FLOOR

4,600 SF *Available July 2026*



6TH FLOOR

3,895 SF



CONTACT

JOE JANSZEN
Senior Director
+1 513 549 4011
joe.janszen@cushwake.com

cincyofficeadvisors.com

308 E 8TH

Corner of Sycamore & 8th | 8TH Street Design District

©2025 Cushman & Wakefield. All rights reserved. The material in this presentation has been prepared solely for information purposes, and is strictly confidential. Any disclosure, use, copying or circulation of this presentation (or the information contained within it) is strictly prohibited, unless you have obtained Cushman & Wakefield's prior written consent. The views expressed in this presentation are the views of the author and do not necessarily reflect the views of Cushman & Wakefield. Neither this presentation nor any part of it shall form the basis of, or be relied upon in connection with any offer, or act as an inducement to enter into any contract or commitment whatsoever. NO REPRESENTATION OR WARRANTY IS GIVEN, EXPRESS OR IMPLIED, AS TO THE ACCURACY OF THE INFORMATION CONTAINED WITHIN THIS PRESENTATION, AND CUSHMAN & WAKEFIELD IS UNDER NO OBLIGATION TO SUBSEQUENTLY CORRECT IT IN THE EVENT OF ERRORS.



**CUSHMAN &
WAKEFIELD**