

FOR LEASE
±30,062 SF

SOLAR
POWERED



THREE BUILDINGS TOTALING ±30,062 SF WITH LARGE SECURE
YARD ON A ±88,824 SF LOT

711 KEVIN COURT
OAKLAND

PROPERTY HIGHLIGHTS

BUILDING A

Building Size: ±14,680 SF Fleet Maintenance Facility

Office: ±1,500 SF

Loading: Thirteen (13) Drive-In Doors (10' X 12')

Clear Height: ±16'

Power: 600 Amps

Solar Panels: Yes

Spray Booth: Three (3)

Zoning: IG

BUILDING B

Building Size: ±11,382 SF Industrial Building

Office: ±1,500 SF

Loading: One (1) 16' Roll Up Door

Clear Height: ±16'

Power: 600 Amps

Solar Panels: Yes

Zoning: IG

BUILDING C

Building Size: ±4,000 SF Architectural Office/Kitchen

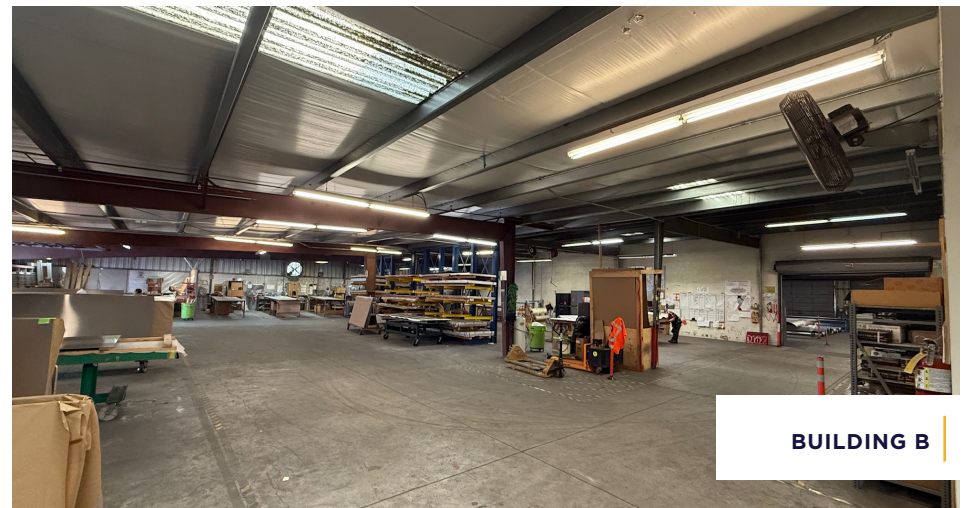
Mezzanine: ±1,500 SF (Bonus Space not Calculated in SF)

Solar Panels: Yes

Comments: High-End Kitchen and ADA Restrooms



BUILDING A



BUILDING B



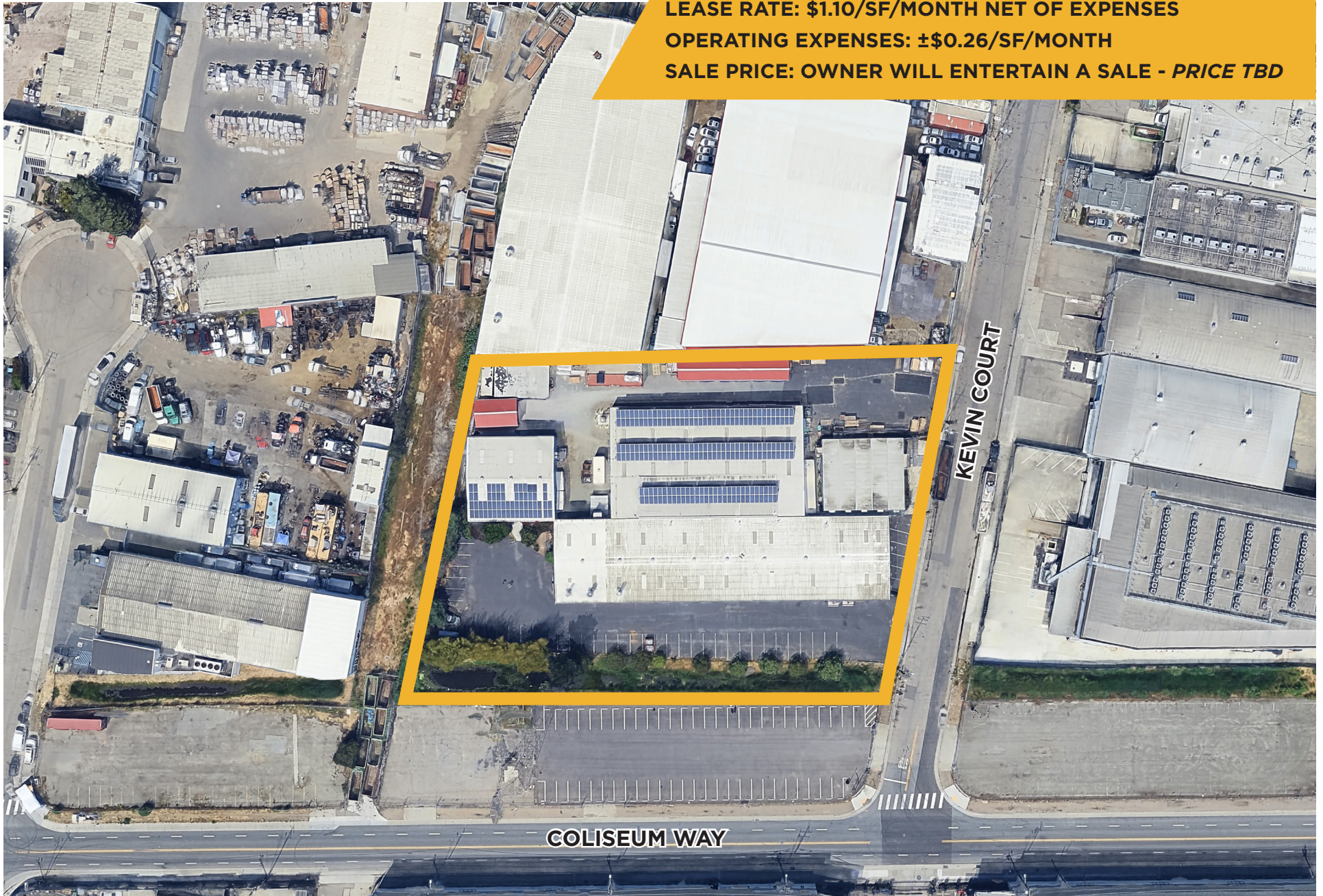
BUILDING C
Office Exterior

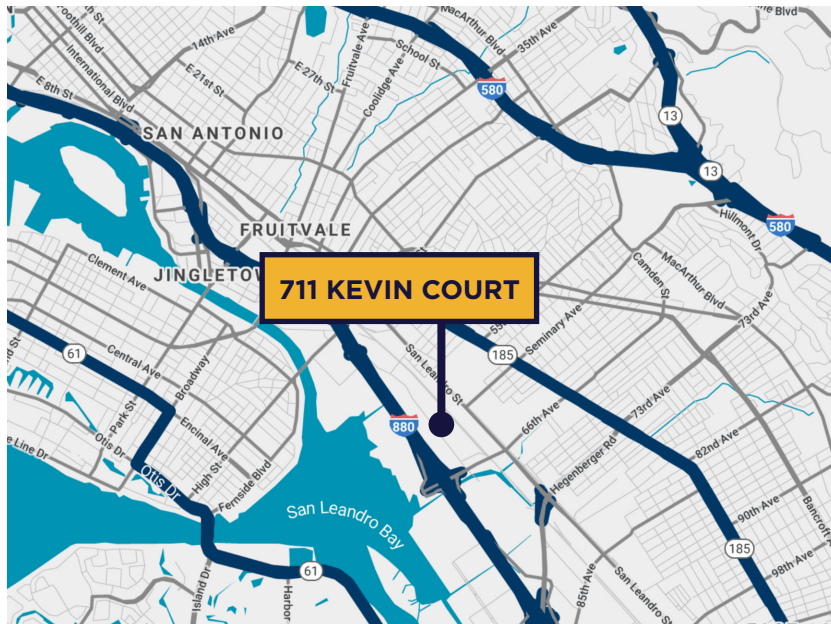
PROPERTY AERIAL

LEASE RATE: \$1.10/SF/MONTH NET OF EXPENSES

OPERATING EXPENSES: ±\$0.26/SF/MONTH

SALE PRICE: OWNER WILL ENTERTAIN A SALE - PRICE TBD





JAY HAGGLUND, SIOR

Executive Managing Director
510.918.7922
jay.hagglund@cushwake.com
LIC #00888011

JACKSON HAGGLUND

Director
925.978.3142
jackson.hagglund@cushwake.com
LIC #02138597

CRAIG HAGGLUND, SIOR

Principal
510.220.7688
chagglund@lee-associates.com
LIC #01090730

