




111 BATHURST STREET

Toronto, ON

Full Service Restaurant Space Available at
Bathurst Street and Adelaide Street West



WELCOME TO 111 BATHURST STREET

This retail opportunity offers a vibrant and lively setting with a thriving arts and culture scene, trendy shops, diverse dining options and excellent public transit.

The space has expansive wraparound frontage Along Bathurst Street and Adelaide Street West, offering excellent visibility. Toronto’s Downtown West is continuing to experience exponential residential growth with the development of King-Adelaide Centre, Waterworks, KING Toronto, and The Well. With its central location and ever-evolving retail and cultural landscape, 111 Bathurst is a vibrant part of the city well suited for a full-service restaurant use.

DETAILS

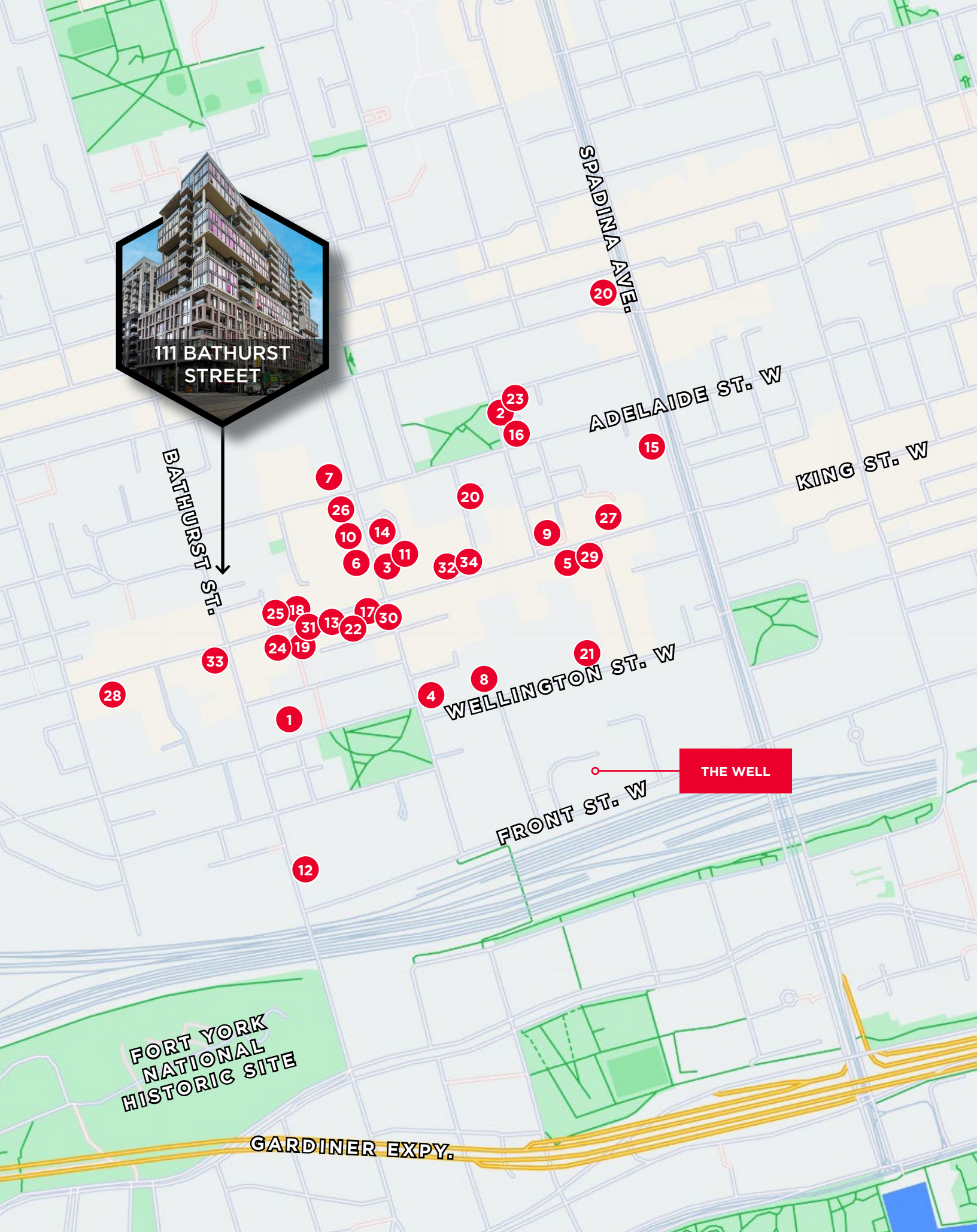
SIZE	Ground Floor: ±6,193 SF Mezzanine: ±4,110 SF Total: ±10,303 SF
NET RENT	Negotiable
ADDITIONAL RENT	\$22.00 PSF (est. 2023)
TERM	5-10 years
AVAILABILITY	Immediate

HIGHLIGHTS

- 200 indoor dining seats
- Space contains a private dining room with 45 seats
- Patio has approximately 190 seats and has a permit to have an additional ±35 seats on Adelaide Street West
- Full heating equipment for the exterior patio
- Value owner is willing to sell all equipment including the beer brewing equipment

PROPERTY OVERVIEW












NEIGHBOURHOOD OVERVIEW

NEIGHBOURHOOD AMENITIES

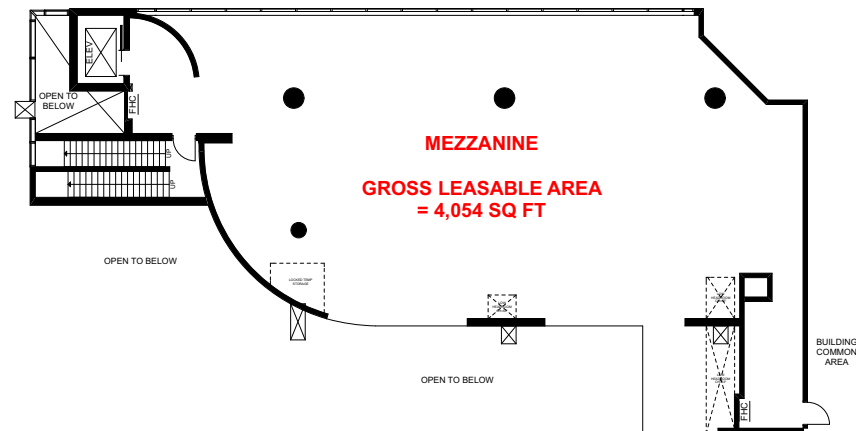
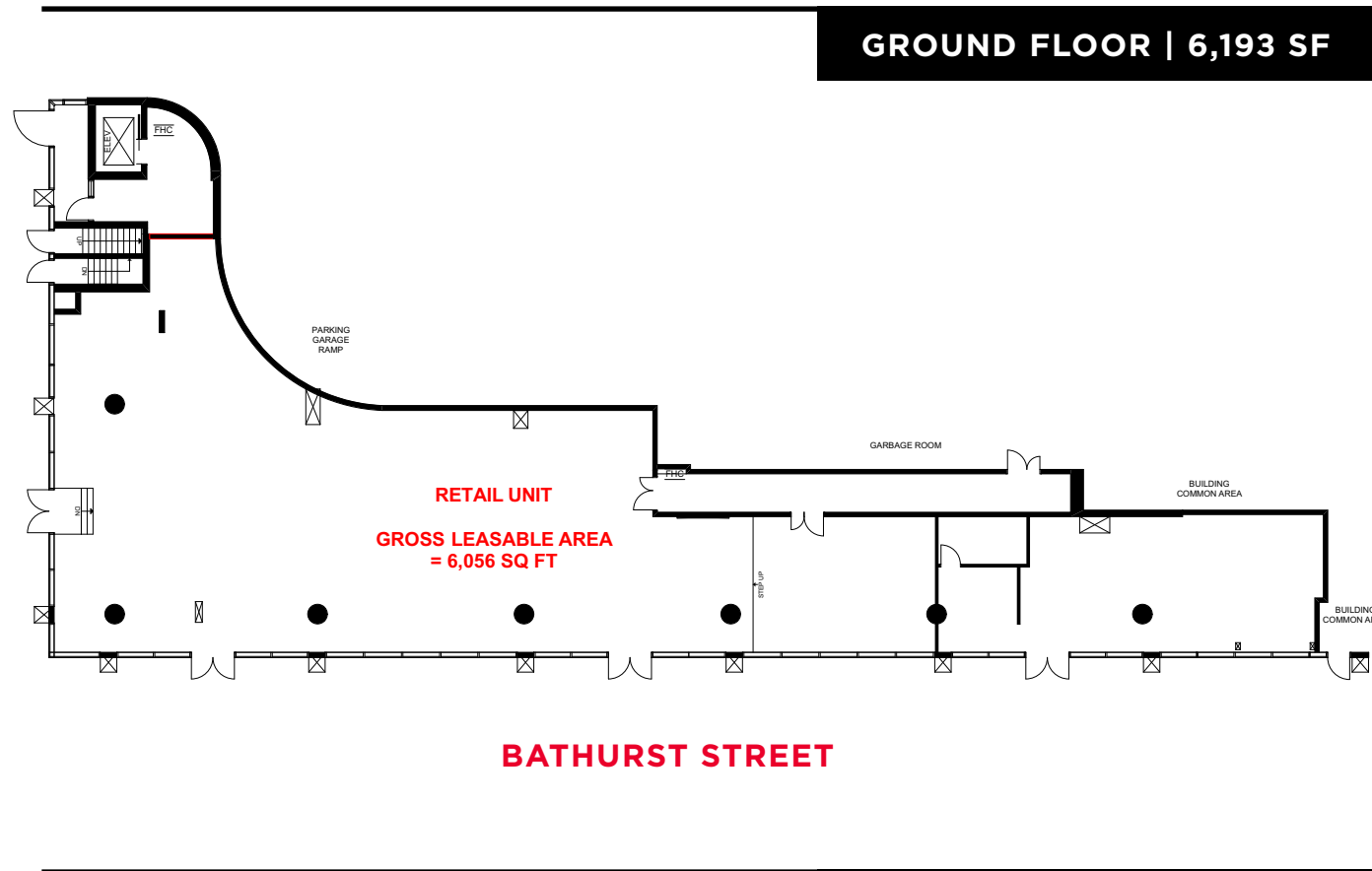
- | | |
|------------------------|---------------------------|
| 1. 1 Hotel | 18. Lapinou |
| 2. Ace Hotel | 19. Lavelle |
| 3. Anejo | 20. Le Gourmand |
| 4. Bar Wellington | 21. Le Select Bistro |
| 5. Baro | 22. Locals Only |
| 6. Buca | 23. Nut Bar |
| 7. Campechano Taqueria | 24. Oretta |
| 8. Cherry's High Dive | 25. Parlour |
| 9. Cibo | 26. Petty Cash |
| 10. Dasha | 27. Pink Sky |
| 11. Dollarama | 28. Pure and Simple |
| 12. Farm Boy | 29. Rodney's Oyster House |
| 13. Forno Cultura | 30. Ruby Soho |
| 14. Gusto 101 | 31. Starbucks |
| 15. HomeSense | 32. The Keg Steakhouse |
| 16. Impact Kitchen | 33. Wheat Sheaf |
| 17. Laissez Faire | 34. Wilbur Mexicana |

DEMOGRAPHICS (5KM)

 Population 534,462.5	 Traffic Score 99
 Daytime Population 1,048,628	 Pedestrian Score 100
 Total Households 285,746.9	 Transit Score 100
 Avg. Household Income 121,206.3	

FLOORPLANS

ADELAIDE STREET WEST





161 Bay Street, Suite 1500
Toronto, ON M5J 2S1 | Canada

CARMEN SIEGEL

Associate Vice President
Retail Services
+1 416 359 2365
carmen.siegel@cushwake.com

HANNAH KINNEY

Associate
Retail Services
+1 416 359 2390
hannah.kinney@cushwake.com

CONTACT

©2024 Cushman & Wakefield. All rights reserved. The information contained in this communication is strictly confidential. This information has been obtained from sources believed to be reliable but has not been verified. NO WARRANTY OR REPRESENTATION, EXPRESS OR IMPLIED, IS MADE AS TO THE CONDITION OF THE PROPERTY (OR PROPERTIES) REFERENCED HEREIN OR AS TO THE ACCURACY OR COMPLETENESS OF THE INFORMATION CONTAINED HEREIN, AND SAME IS SUBMITTED SUBJECT TO ERRORS, OMISSIONS, CHANGE OF PRICE, RENTAL OR OTHER CONDITIONS, WITHDRAWAL WITHOUT NOTICE, AND TO ANY SPECIAL LISTING CONDITIONS IMPOSED BY THE PROPERTY OWNER(S). ANY PROJECTIONS, OPINIONS OR ESTIMATES ARE SUBJECT TO UNCERTAINTY AND DO NOT SIGNIFY CURRENT OR FUTURE PROPERTY PERFORMANCE.

