

FOR LEASE

SUITE 560, 600, 650 & 660

**5900 NO. 3 ROAD
RICHMOND, BC****THE OPPORTUNITY**

Office space for lease in Richmond City Centre in a well-managed building! The building is located at the corner of Westminster Highway and No. 3 Road, with access from both of these major roads. In addition, the building offers excellent access by transit as it is located half a block to Brighthouse Skytrain Station and the bus loop at Brighthouse station. Need to visit City Hall frequently? Richmond City Hall is within a 10 minute walk. Frequent flyer? Airport is a 10 minute drive away or five stops on the Skytrain.

PROPERTY FEATURES

- Well-managed concrete building
- Located in the core of Richmond's City Centre
- Excellent amenities within a 10-minute stroll: Richmond Centre, Lansdowne Centre, numerous restaurants, cafes and services

BASIC RENT

Contact Listing Agent

ADDITIONAL RENT

\$22.15 (2025 Estimate)

PARKING

1:500 SF

AVAILABILITIES

Suite 560	1,371 SF	(Available upon 30 days notice)
Suite 600*	1,569 SF	(Available Immediately)
Suite 650*	1,585 SF	(Available Immediately)
Suite 660*	910 SF	(Available on 60 days notice)

**Suites 600, 650 and 660 can be combined for a total size of 4,064 SF*

ZONING

CDT1 - Downtown Commercial

FOR MORE INFORMATION, CONTACT:

FRANCES WU
Senior Associate
+1 604 639 9356
frances.wu@cushwake.com



FOR LEASE

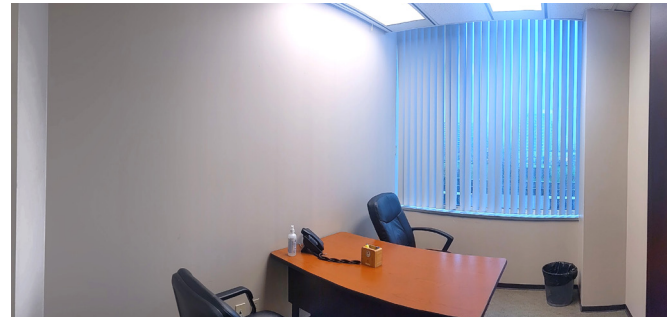
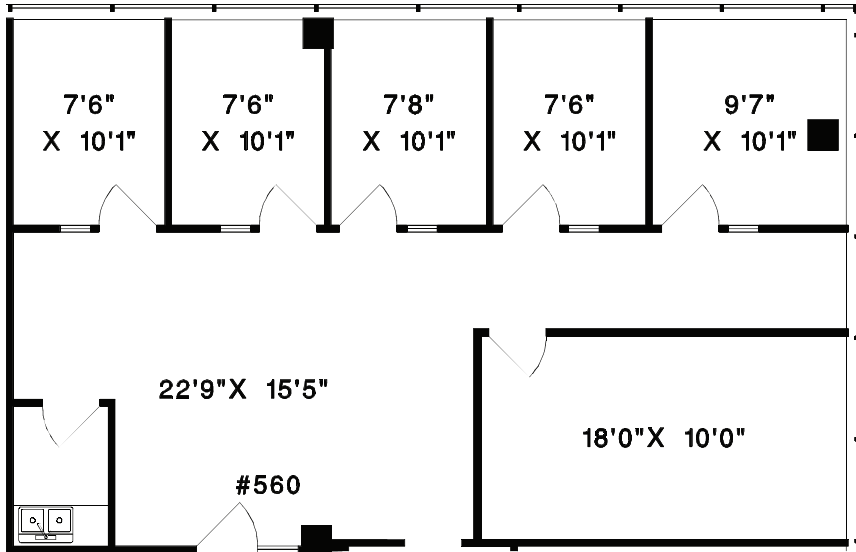
SUITE 560

5900 NO. 3 ROAD
RICHMOND, BC

Vancity

FLOOR PLAN

1,371 SF





FOR LEASE

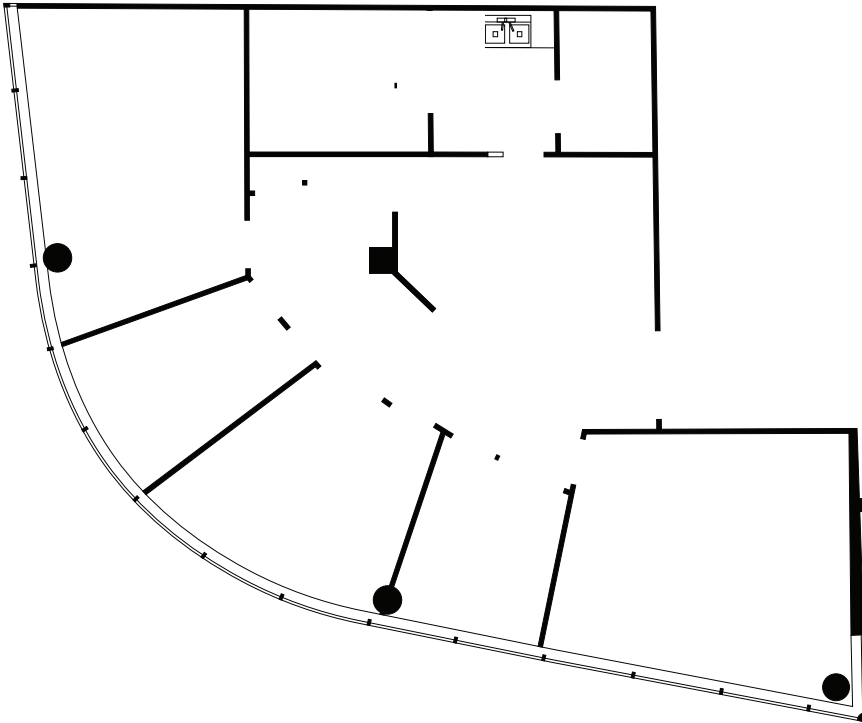
SUITE 600

5900 NO. 3 ROAD
RICHMOND, BC

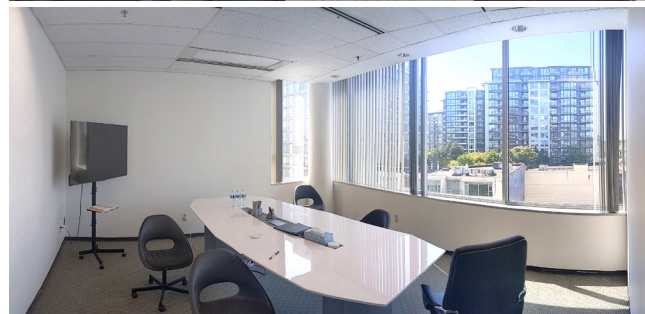
Vancity

FLOOR PLAN

1,569 SF



Suite 600 can be combined with suite 650 for a total size of 3,154 SF and can also be combined with suite 660 for a total size of 4,064 SF





FOR LEASE

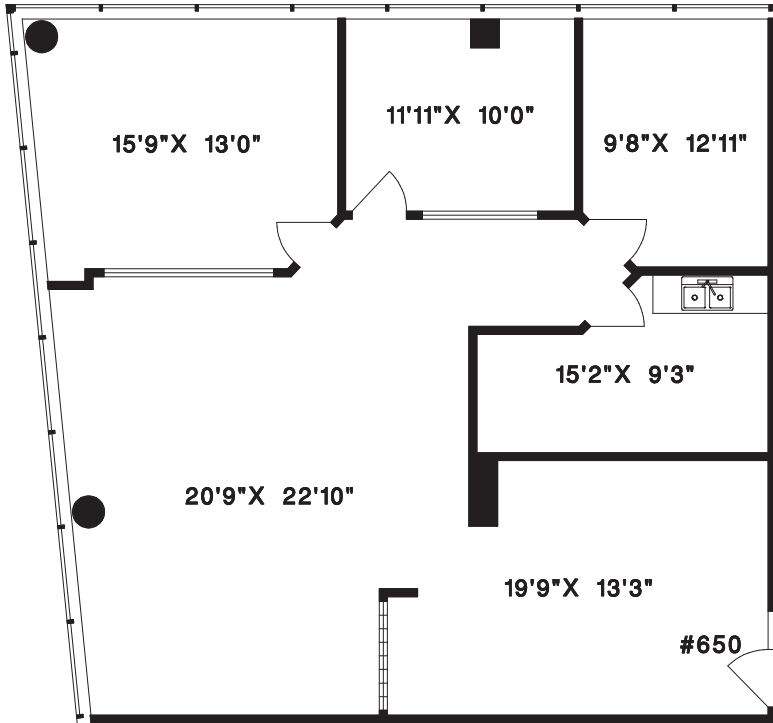
SUITE 650

5900 NO. 3 ROAD
RICHMOND, BC

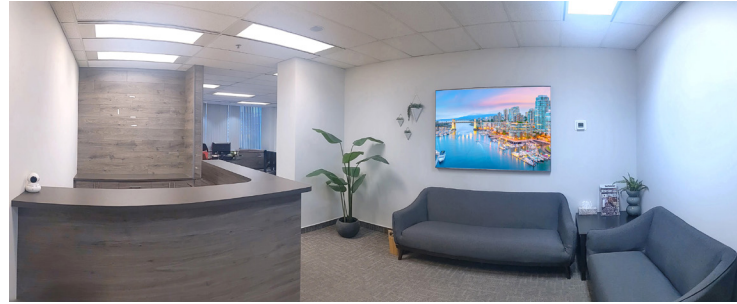
Vancity

FLOOR PLAN

1,585 SF



Suite 650 can be combined with suite 600 for a total size of 3,154 SF or can be combined with suite 660 for a total size of 2,495 SF. Can also be combined with both 600 and 660 for total size of 4,064 SF.





FOR LEASE

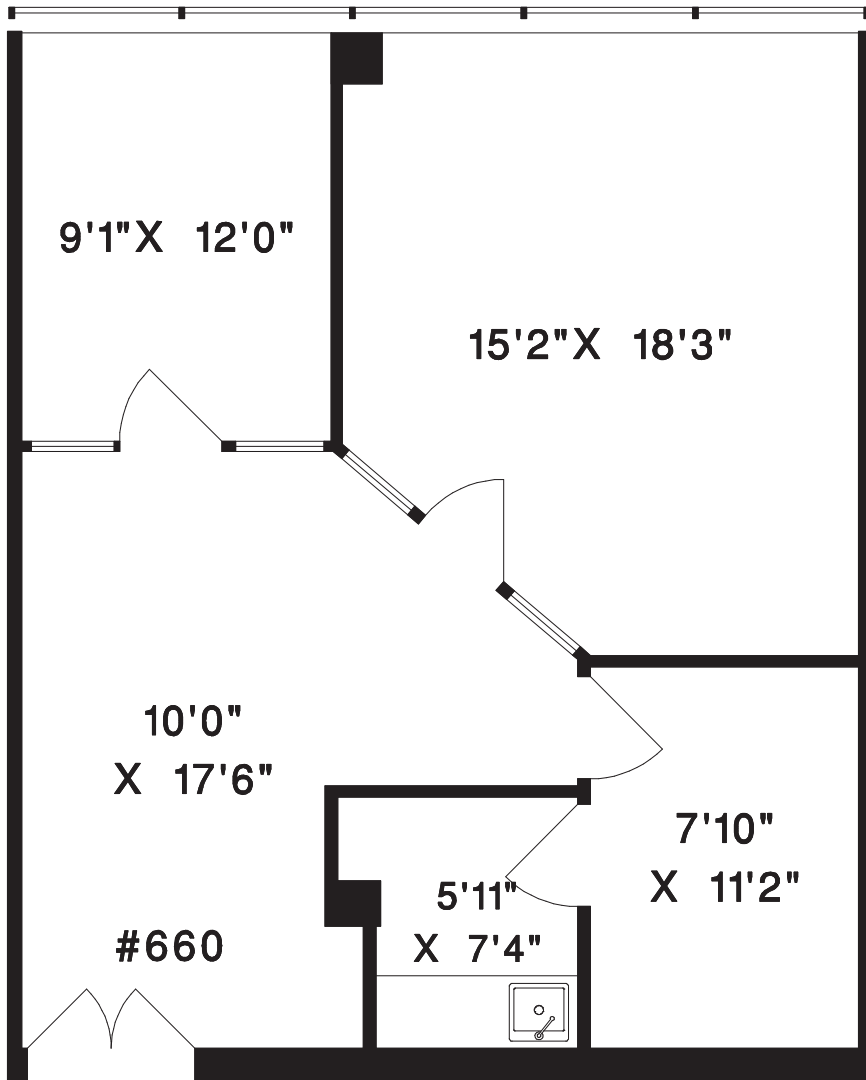
SUITE 660

5900 NO. 3 ROAD
RICHMOND, BC

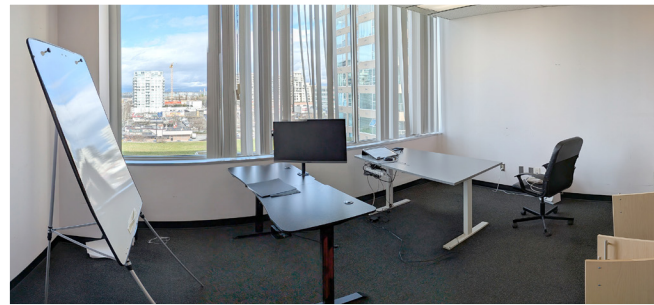
Vancity

FLOOR PLAN

910 SF



Suite 660 can be combined with suite 650 for a total size of 2,495 SF and can also be combined with suite 600 for a total size of 4,064 SF





FOR LEASE

SUITE 560, 600, 650 & 660

5900 NO. 3 ROAD
RICHMOND, BC



- 1. Richmond City Hall
- 2. Richmond Hospital
- 3. Richmond Law Court
- 4. Richmond Centre
- 5. Richmond Oval

- 6. Trinity Western University (Minoru)
- 7. Trinity Western University (Lansdowne)
- 8. Kwantlen University
- 9. BCIT Aerospace campus
- 10. YVR airport

- 11. Aberdeen Centre
- 12. Grand Park Hotel
- 13. La Quinta By Wyndham
- 14. Lansdowne Centre

- Skytrain
- British Columbia Highway 99

FOR MORE INFORMATION, CONTACT:

FRANCES WU
 Senior Associate
 +1 604 639 9356
 frances.wu@cushwake.com

cushmanwakefield.com