

FOR LEASE

25,858 SF AVAILABLE



MARKETPLACE AT MIDDLETOWN

12910 SHELBYVILLE RD | LOUISVILLE, KY

PROPERTY HIGHLIGHTS

Marketplace at Middletown is a Class A suburban office building located in the highly desirable Middletown market. The building is surrounded by amenities such as parking, restaurants, and shopping. Excellent ingress/egress on Shelbyville Road and I-265 make Marketplace at Middletown a convenient location from anywhere around Louisville. High visibility signage opportunities are available.

Building Size: 66,890 sf

Space Available: Suite 200: 4,018 sf
Suite 300: 21,840 sf

Floors: 3 floors

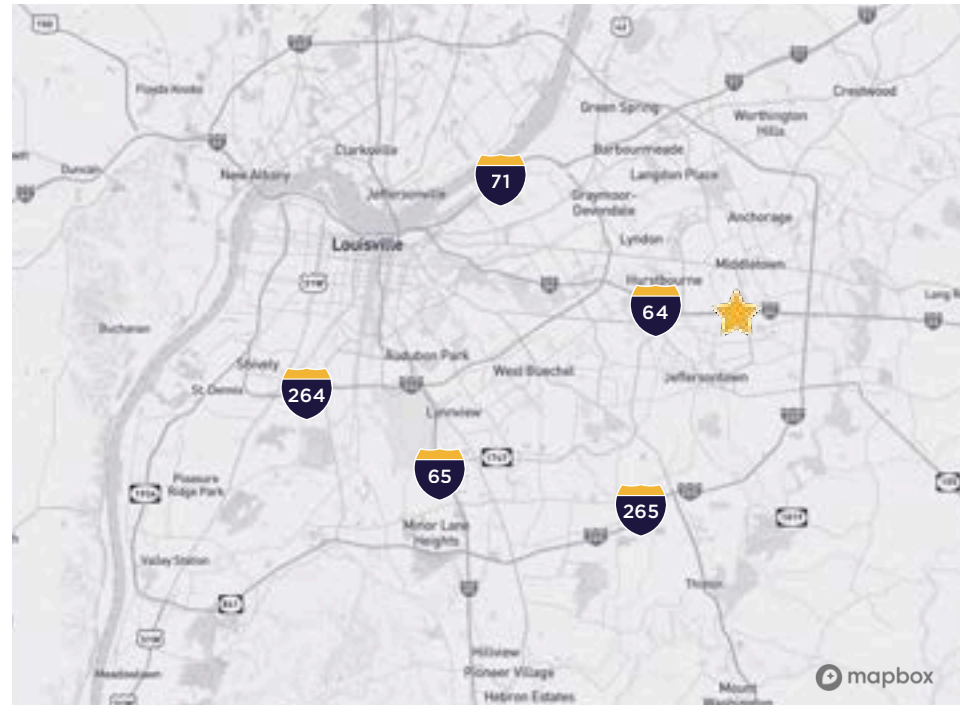
Zoning: OR-3

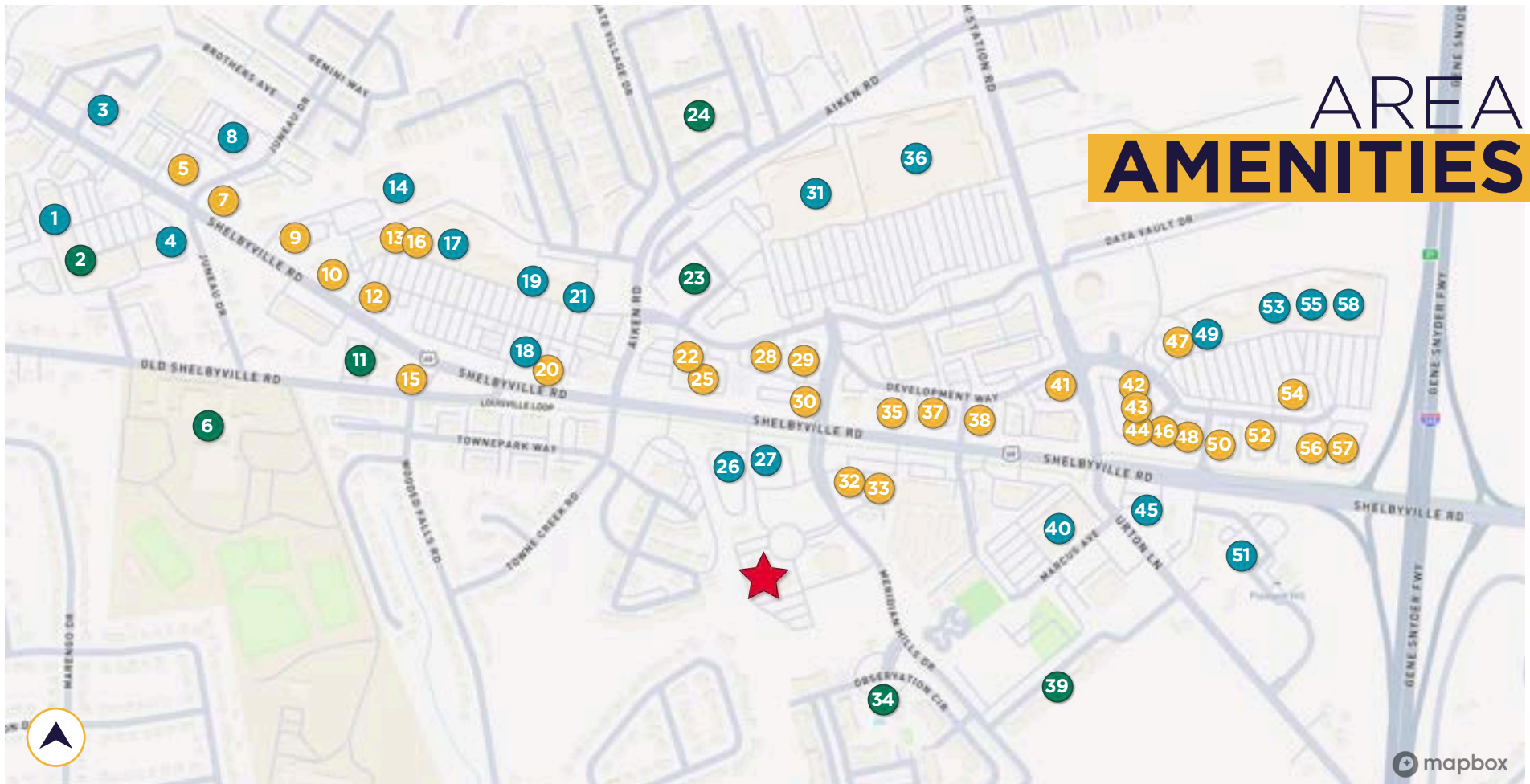
Year Built: 1990

Year Renovated: 2005

Class: Class A

Parking Ratio: 4.0/1000 sf





AREA AMENITIES

Restaurants

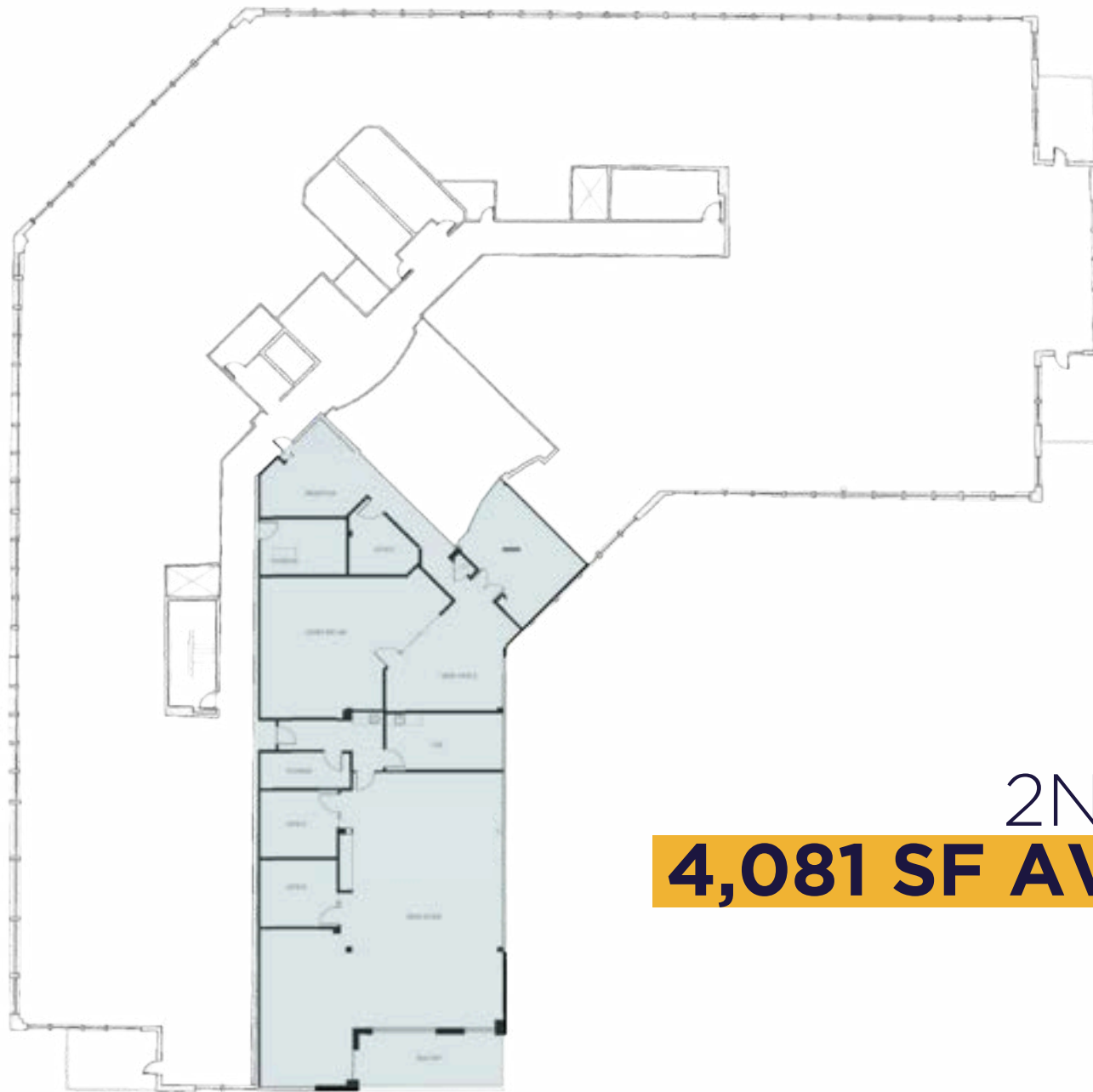
- | | | |
|------------------------|--------------------|---------------------|
| 5. McDonald's | 28. McAlister's | 44. Chipotle |
| 7. Dunkin' | 29. Salsarita's | 46. Five Guys |
| 9. White Castle | 30. First Watch | 47. Joella's |
| 10. 7 Brew | 32. Panera | 48. Double Dogs |
| 12. Taco Bell | 33. Qdoba | 50. Panda Express |
| 13. Wingstop | 35. Waffle House | 52. Chick-fil-A |
| 15. Starbucks | 37. Wendy's | 54. Blaze Pizza |
| 16. Subway | 38. Freddy's | 56. Krispy Kreme |
| 20. Lou Lou | 41. El Nopal | 58. Texas Roadhouse |
| 22. Buffalo Wild Wings | 42. Biscuit Belly | |
| 25. Jimmy Johns | 43. Green District | |

Retail

- | | |
|--------------------|--------------------|
| 1. Rainbow Blossom | 31. Target |
| 3. UPS Store | 36. Walmart |
| 4. Ken Towery's | 40. Planet Fitness |
| 8. ALDI | 45. Thorntons |
| 14. Peddler's Mall | 49. Five Below |
| 17. Kroger | 51. Goodwill |
| 18. PNC | 53. Hobby Lobby |
| 19. GNC | 55. Liquor Barn |
| 21. Petco | 58. Academy Sports |
| 26. Frank Otte | |
| 27. Stock Yards | |

Community/Other

- | |
|---------------------------------|
| 2. Jefferson Co. Clerk's Office |
| 6. Eastern High School |
| 11. Middletown Library |
| 23. The Station Apartments |
| 24. Brookview Apartments |
| 34. Meridian Apartments |
| 39. Middletown Apartments |



2ND FLOOR
4,081 SF AVAILABLE



3RD FLOOR
21,840 SF AVAILABLE

CONTACT INFORMATION

EP SCHERER

Senior Director

epscherer@commercialkentucky.com

+1 502 719 3234



©2025 Cushman & Wakefield. All rights reserved. The information contained in this communication is strictly confidential. This information has been obtained from sources believed to be reliable but has not been verified. NO WARRANTY OR REPRESENTATION, EXPRESS OR IMPLIED, IS MADE AS TO THE CONDITION OF THE PROPERTY (OR PROPERTIES) REFERENCED HEREIN OR AS TO THE ACCURACY OR COMPLETENESS OF THE INFORMATION CONTAINED HEREIN, AND SAME IS SUBMITTED SUBJECT TO ERRORS, OMISSIONS, CHANGE OF PRICE, RENTAL OR OTHER CONDITIONS, WITHDRAWAL WITHOUT NOTICE, AND TO ANY SPECIAL LISTING CONDITIONS IMPOSED BY THE PROPERTY OWNER(S). ANY PROJECTIONS, OPINIONS OR ESTIMATES ARE SUBJECT TO UNCERTAINTY AND DO NOT SIGNIFY CURRENT OR FUTURE PROPERTY PERFORMANCE.

Independently Owned & Operated / A Member of the Cushman & Wakefield Alliance